



Elomwe

Mapuro oosikhola wa aka

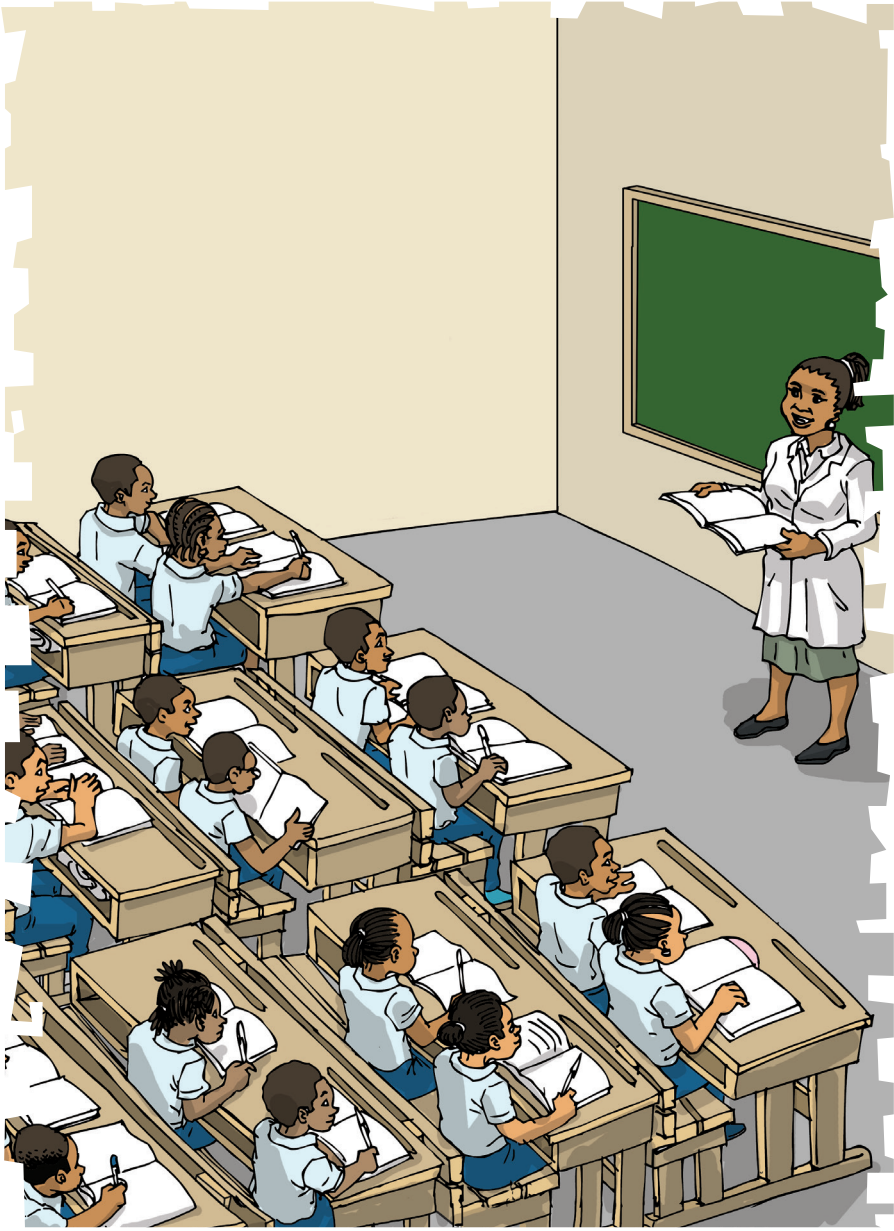


REPÚBLICA DE MOÇAMBIQUE
MINISTÉRIO DA EDUCAÇÃO E
DESENVOLVIMENTO HUMANO



USAID
DO POVO AMERICANO







Esikhola wa aka sookhalawo
isaala.

Musaala, nipuro
enahuseryamo anasikhola.



Mule, sookhala ichu
sintoko:

Ikariteera, ekwaaturu ni
meesa a muhusiha.

Anasikhola yavolowa
musaala.

Muhusiha onnaakhaviherya
makiraathelo.





Sookhala issaala soohiyana
mmasikhola.

Isaala ikinaaku sookhalano
ikaritera.



Ikinaaku sirino mipaco sa
miri.



Navetho ikina
sinakiraathiwa vathi.

Ala makhalelo oovirikana sa
isaala sahu.

Nnamwi hiiya anasikhola
ennahuserya.



Esikhola ikina, hisaanono
isaala.

Iha, anasikhola enahuserya
vaathi wa mwiri.

Hiiha, mapuro makina
onapakiwa mucheko.

Esikhola sincipale hisaano
ikariteera.

Anamwane akina, anaruuha
mipaco owaani.

Meesa a muhusiha
enachaviwa mithala.







Esikhola sa opooma irino
makhalelo makina.

Sookhala ihe irino
ekanntiina.



Ekantiina, mapuro
enakulihiwamo soolya.

Soolya ihe enathumiheriwa
anasikhola.

Iwe sinnathumihiwa ichu
soohiyana sintoko:

Epoolo, esuumu, epulaxa,
ephaawu ni ikina.





Anasikhola, enayawo
yakhalano ikhorowa.

Ale anaya elukuluku ya
wiichuuwa.



Ancipale ennayawo okula
soolya.



Iwe, anasikhola
ennavahanana soolya.

Okantiina iwe, ahusiha
ennayawotho.

Wile nipuro na achu
ootheene.



Ekantina, ennaakhaviherya
anasikhola.

Naari, arule owaani ahilyile
onnalya weyiwe.

Mwaneene a ekantina
onnaruha ichu sorera.

Ananloko yaacamenle
vavale ennathumamo.

Ntakhara mule sirimo ichu
soohiyana.

Onnakhaleliwamo epewe
yaphaama.







Ela elukuluku
yookhweleyaxa vasikhola.
Nihiku ti nihiku, enneereya
hiiha.

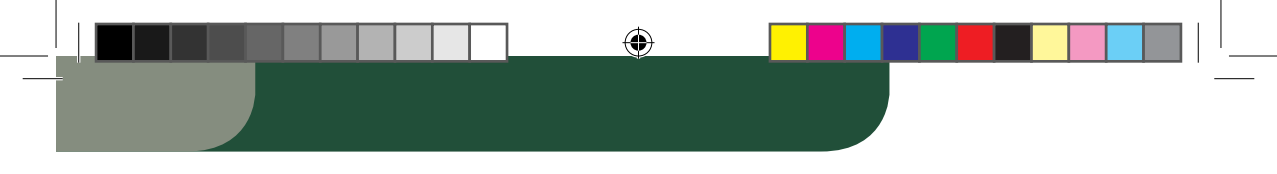
Nva, oniipiwa iino ni owela
wa epantera.

Nave, iino ncipo nniipiwa
ewelaka epantera.

Ncipo nna, ncipo na
ocicimiha elapo ahu.

Iipiwaka, ootheene
eneemela woohitannya.





Ola iipiwaka,
onacheriheliwa ichu
sintoko:

Owela wa epantera ni
saahuliwaka miteko.

Waahuliwaka oloca wa
ahooleli a elapo.

Nna, nnawaataaniha achu
a elapo emoharu.

Achu ootheene esuweleke
omwiipa iino.

Anamwane osikhola
ennahusihiwa omwiipa.



Omuhiya iino, yookhala
ekina yoocicimiha.

Epentera ya elapo ahu
ennalokoha sawaaca.

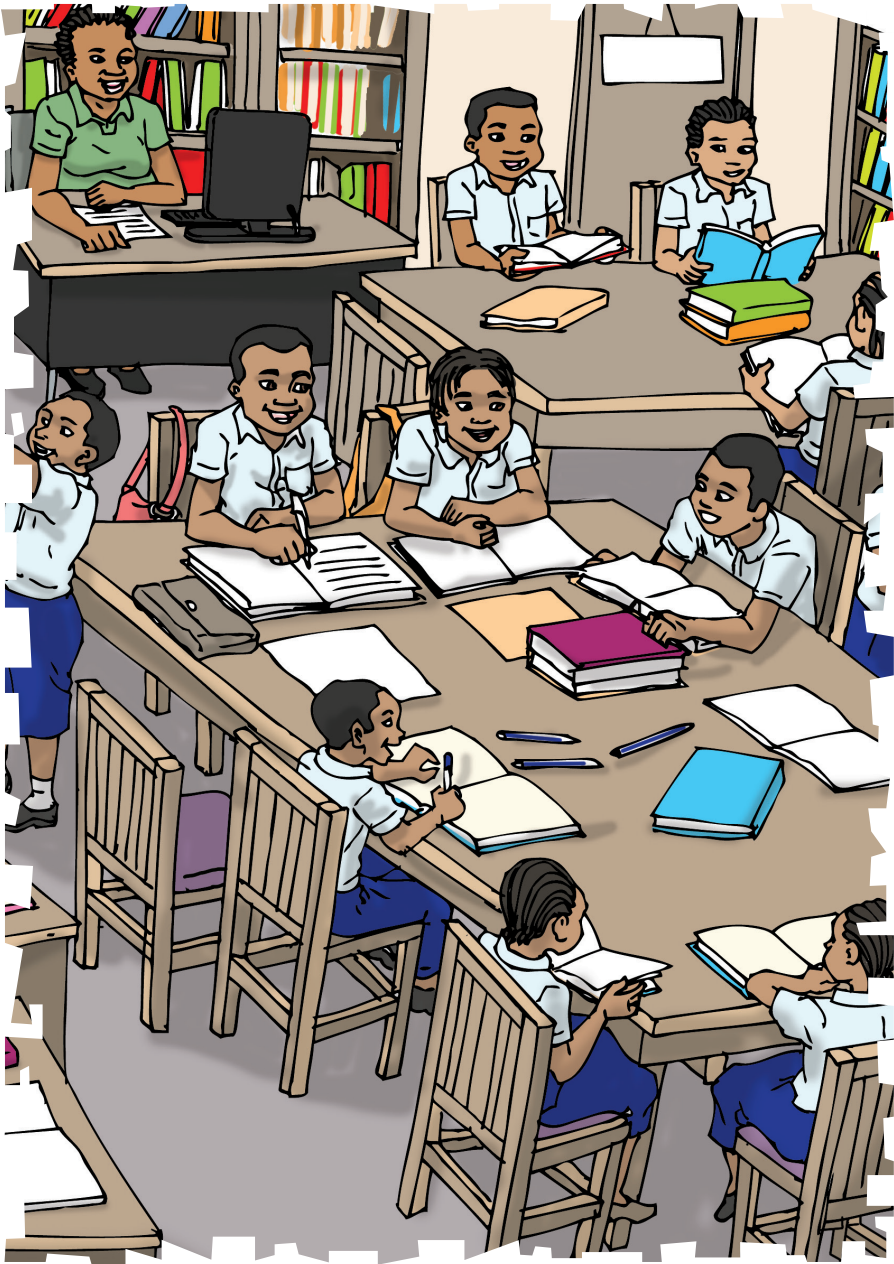
Ela yookhalano mathepa
mathanu.

Nthepa ti nthepa,
nнатaphulela echu.

Mathepa sintoko: naweeila
ni nooriipa.

Makina: nantikwa,
nooxeerya ni namooce.







Esikhola ikina sookhalano
ipipiliyoteka.

Epiipiliyoteka, nipuro
nnakhala maliivuru.


Nipuro nle, enakhalawo
aliivuru oohiyana.

Muchu ti muchu onnayawo
wi ahuserye.

Anasikhola a ikalaasi
ikhaani ni itokweene

Ti wa phaama ohuserya
opiipiliyoteka.





Anasikhola a ikalasi
itokweene ennayawo.
Ale, enapakawo soohuserya
saya sa owaani.
Yaakacamiha echu
yoohuserya ennayawo.
Akina ahikhanle ni aliivuru
ennayawotho.
Iwe, aakhlawo maliivuru
sintoko:
Sa ithale, sa matemaatika
ni ekunya.



Sookhlatho maaliivuru
sintoko:

Sawaalakha ithale sa
anamwane ni ikina.

Sookhalatho sa waalakha
ichu soophacuwa.

Maliivuru makina, sinloca
sa miri ni inama.

Ikina, sinloca sa mihice,
myaako ni emaka.

Aakhalawo aliivuru
ancipale oohusiha.







Isikhola sookhalano nipuro
na mphirya.

Nipuro nna, siineereyawo
miteko sawaaca.


Wile, onnahusiwa ocupha
ni ochimaka.

Mmasikhola, aakhala
ahusiha a muteko ola.

Miteko ihe, ennalipiherya
mmakhuvani.

Mmoha naari awaaca
ennathata vaavale.





Mahiku a wiichuuwa.
Anasikhola ennayawo
onvokha mphirya.
Athiayana ni alopwana
ennanvokha mphirya.
Ennathanlana makhuuru
oowerya.
Aakhalawo akina
enaamuhuserya.
Vale nipuro na achu
ootherene a muceche.