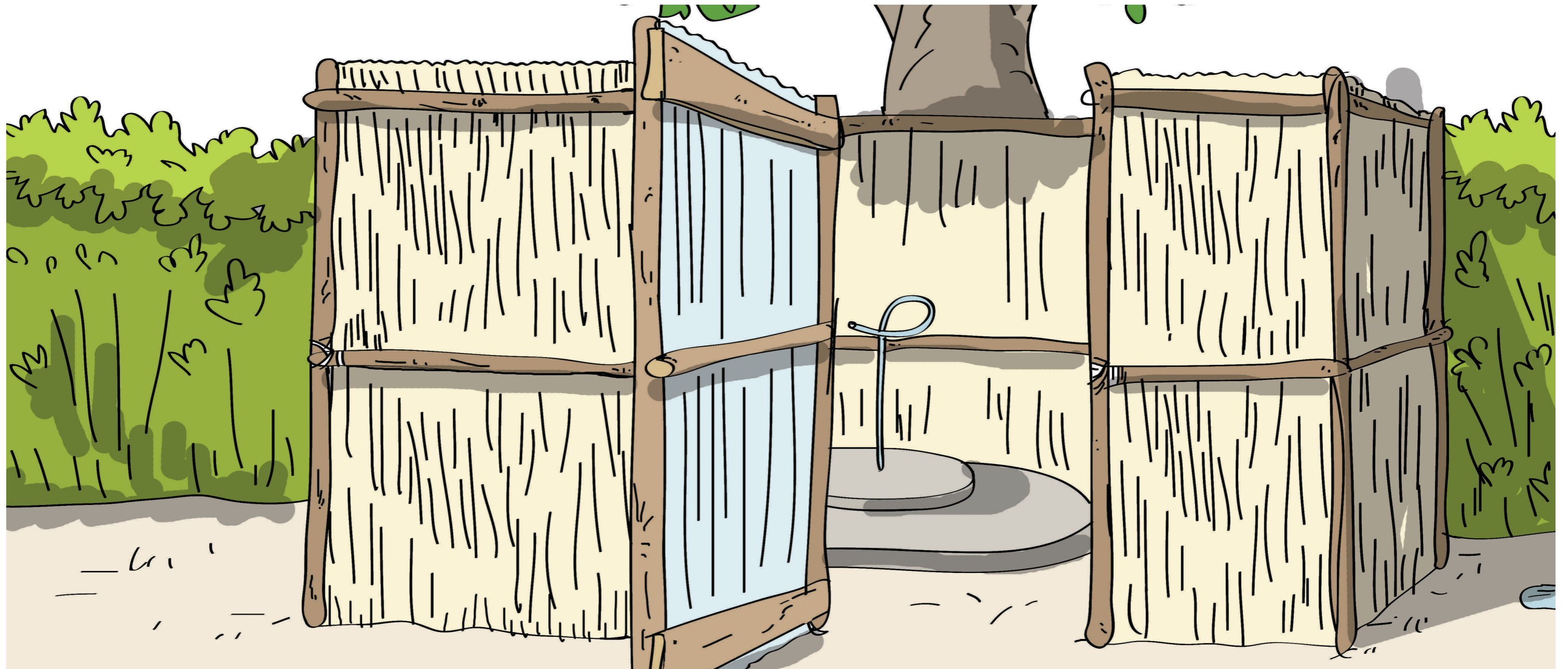
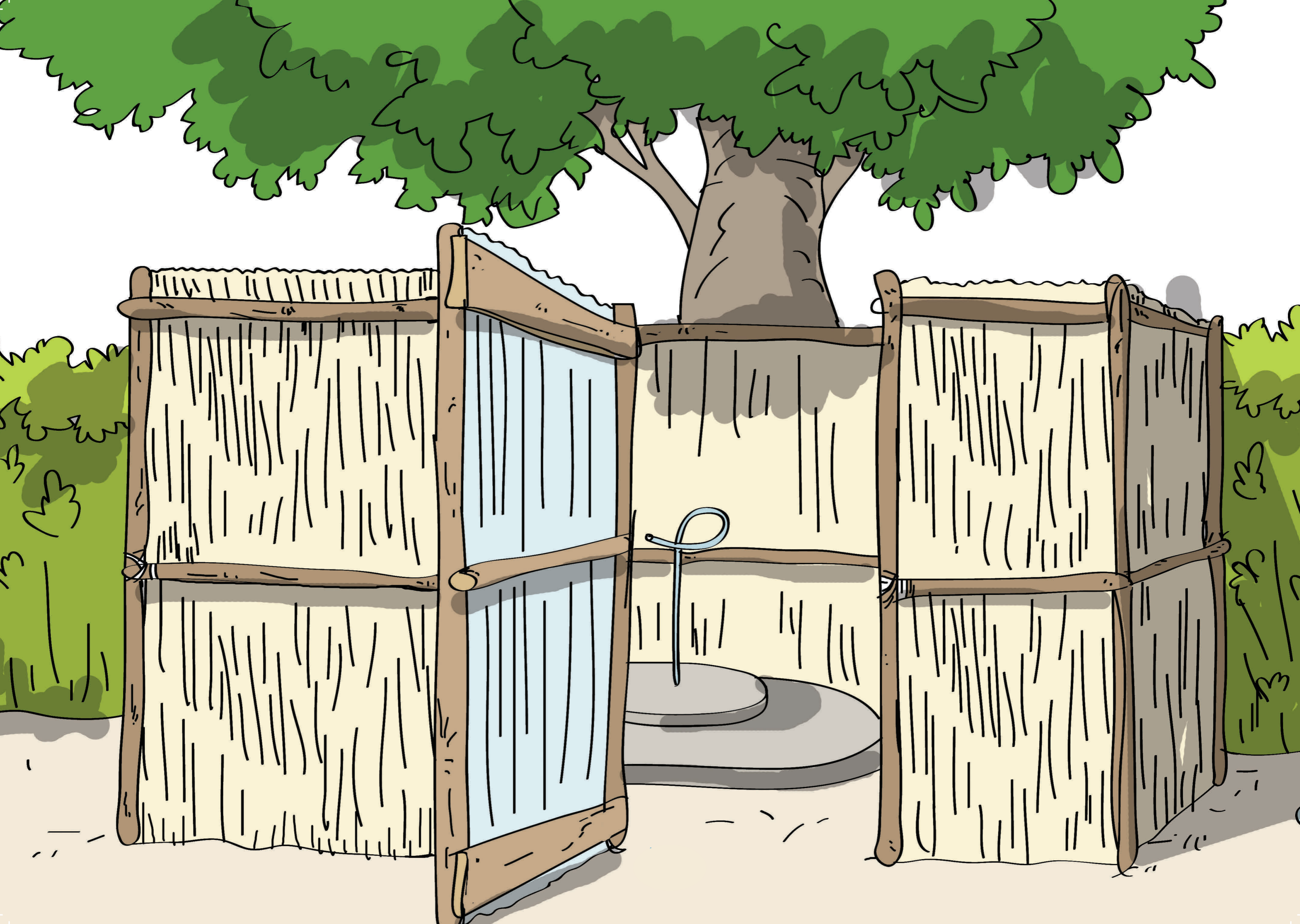


Nyumba ya sintina



Echuwabo



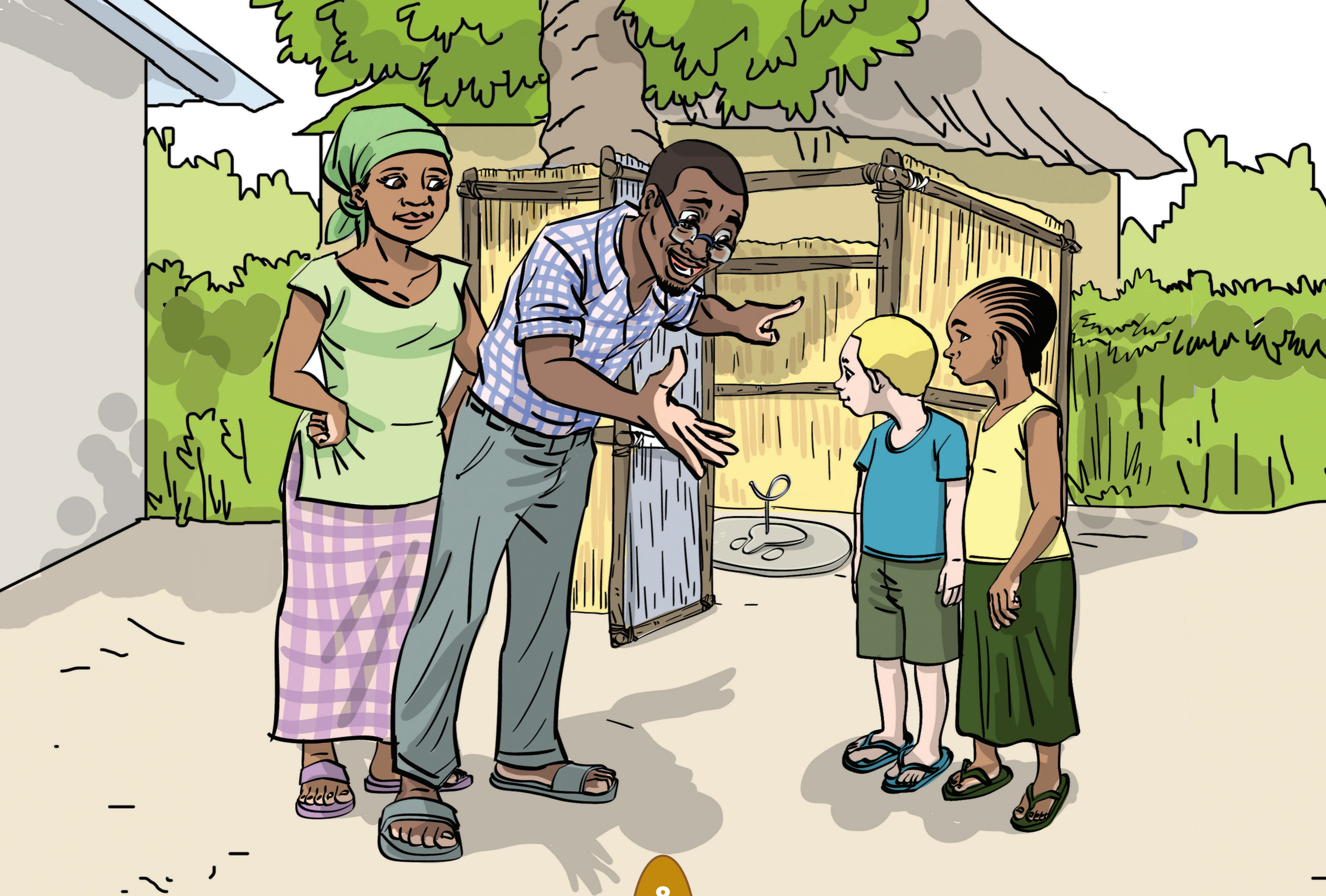
Sintina.



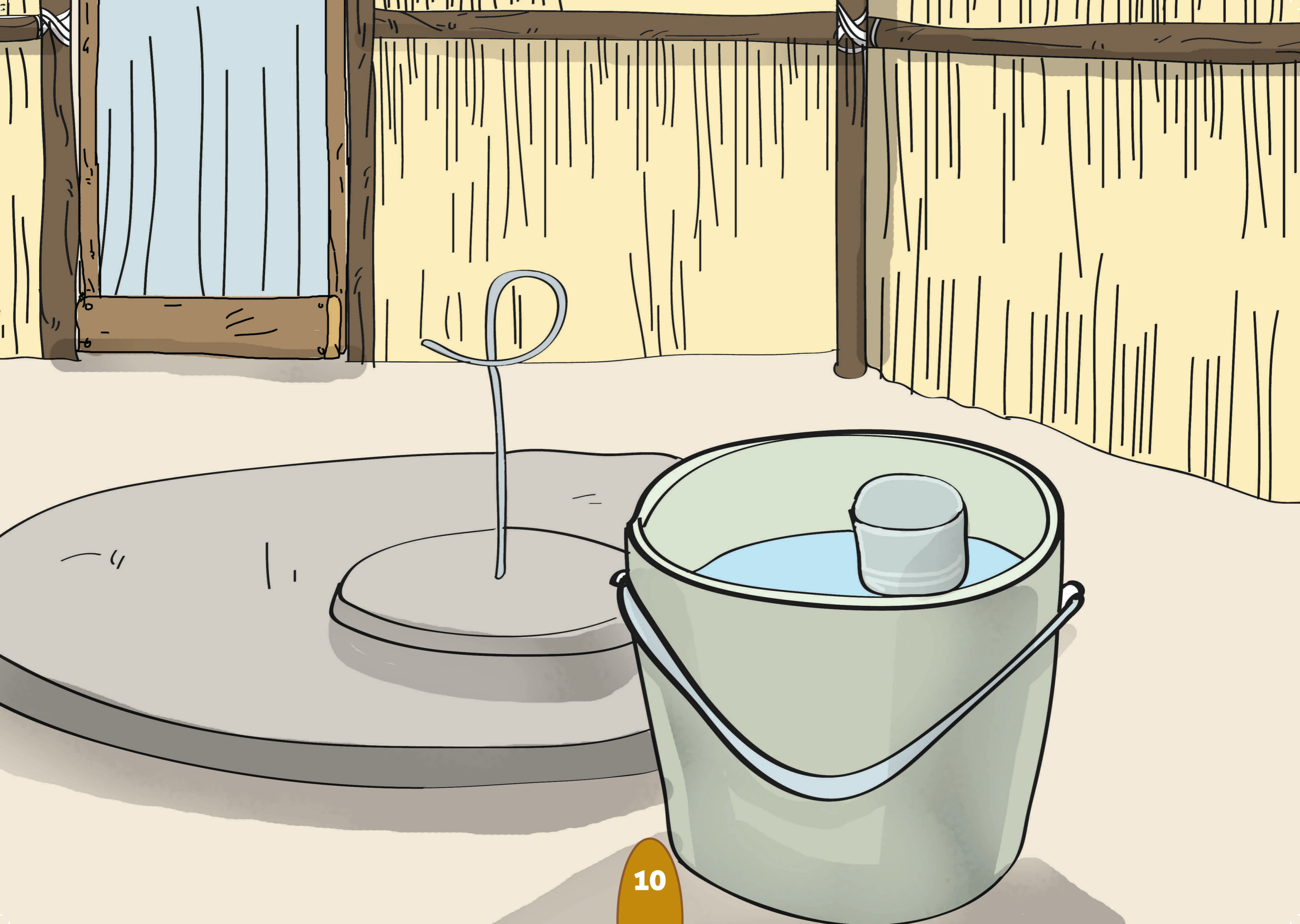
Mwana okana mbani (onovaluwa).



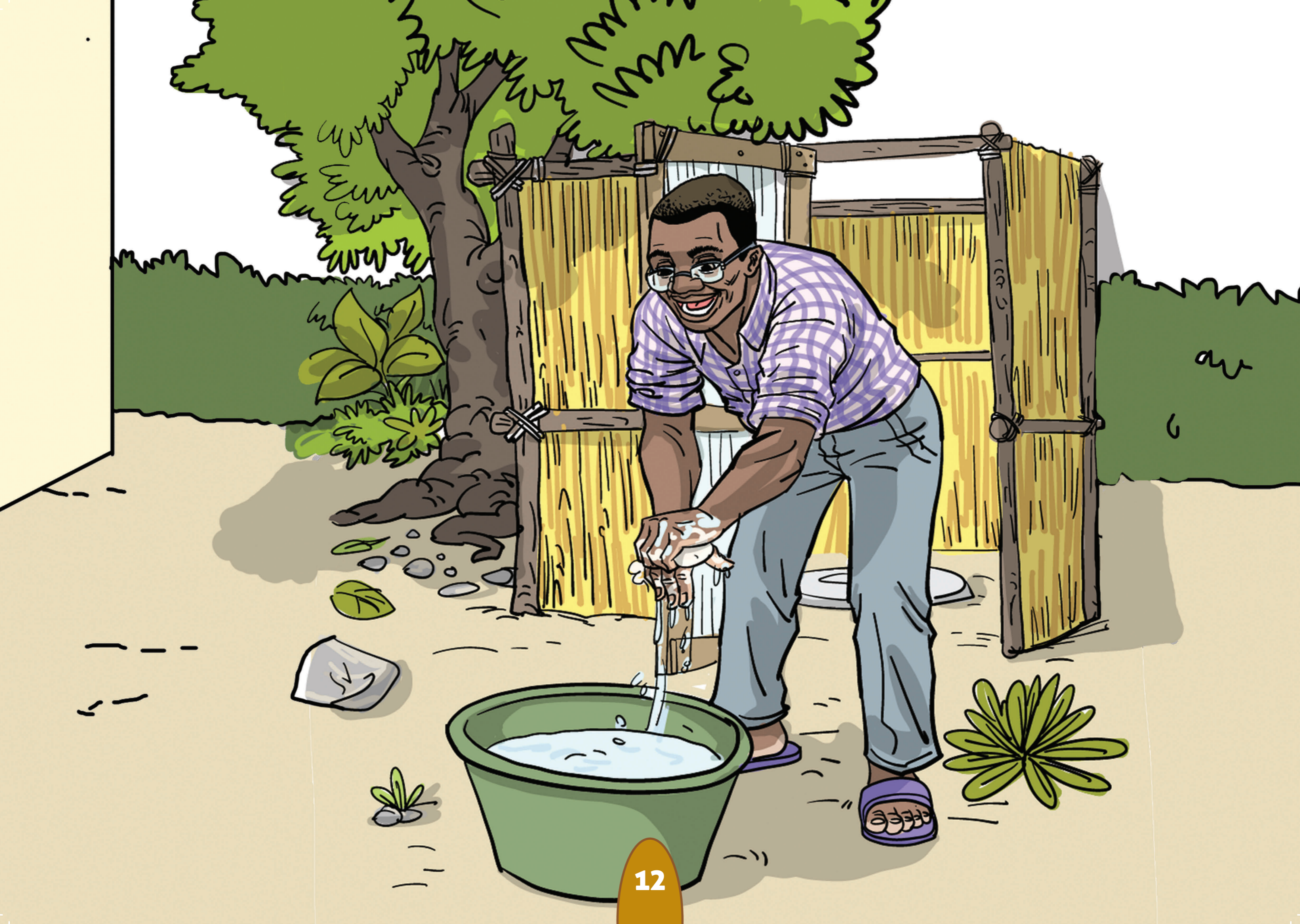
Baba onofugula musuwo wa sintina.



**Ababi anologa na anawa wi alabegena
sintina deretu.**



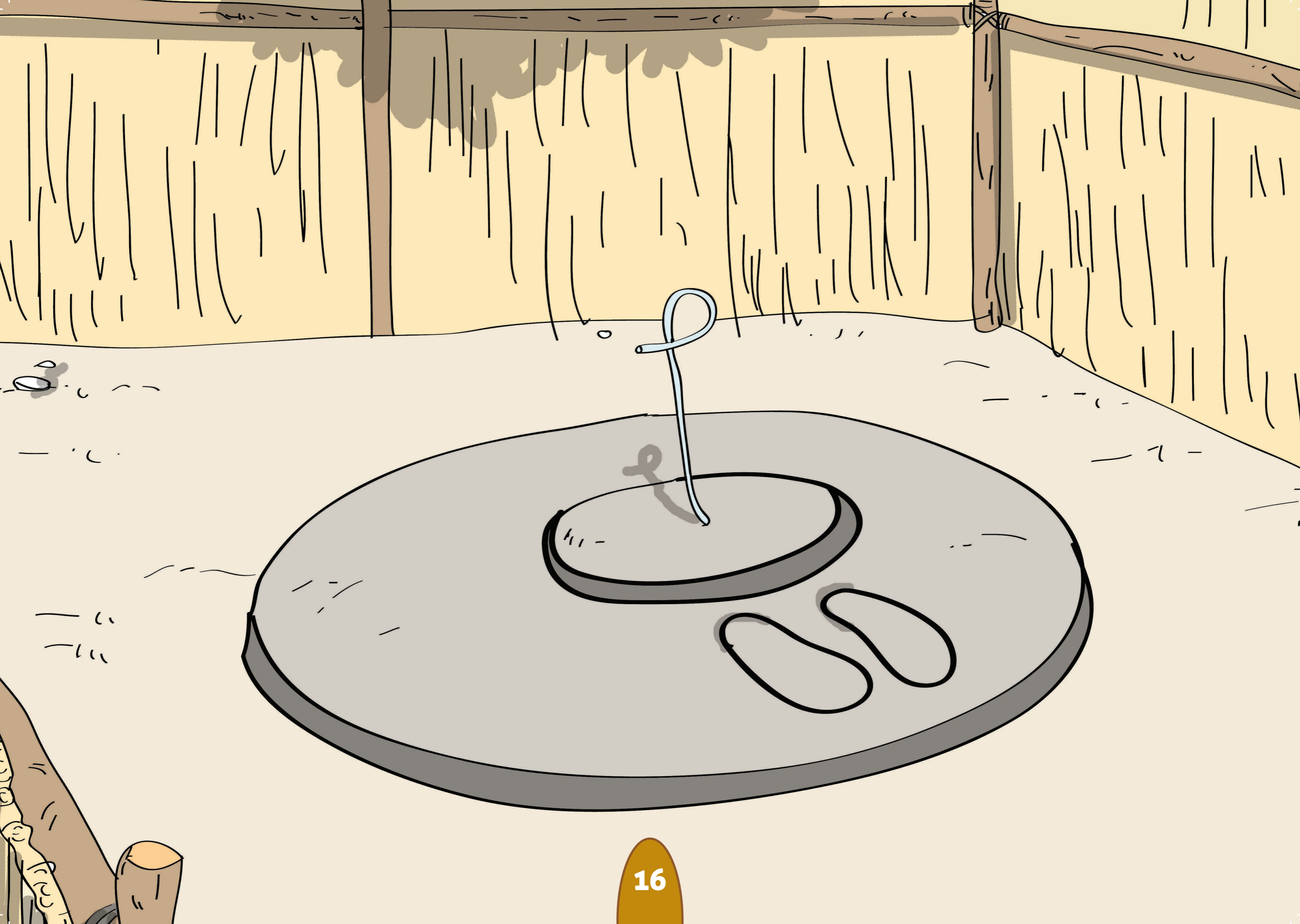
Musintina munokala balide ya manje.



Titiyu ononawa mada na sabawu.



**Titiya onomwyelela titiyo onawa mada
na munddura.**



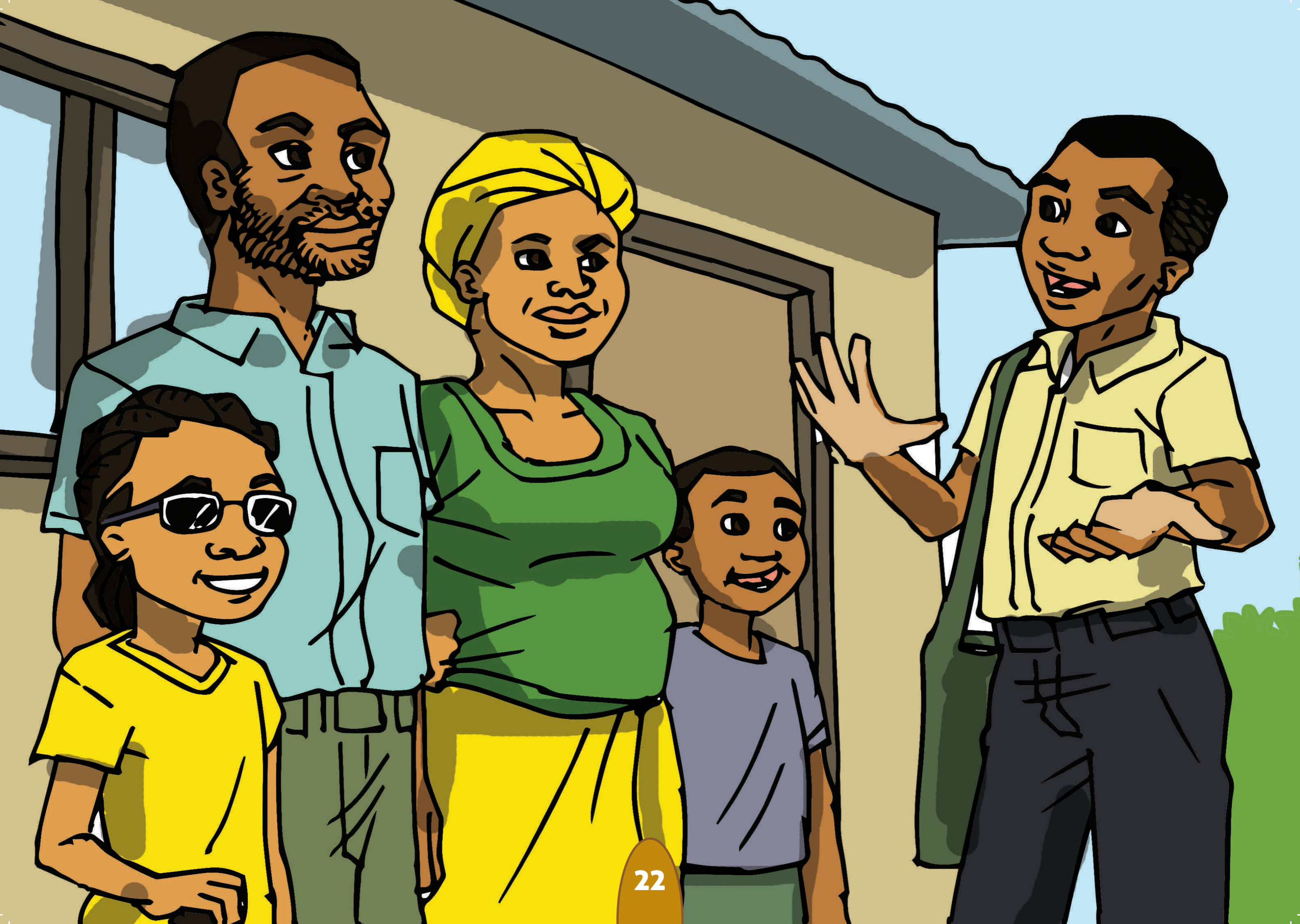
Enofwanyela okunela sintina.



**Cence egamwerela mujani enotota
mareda.**



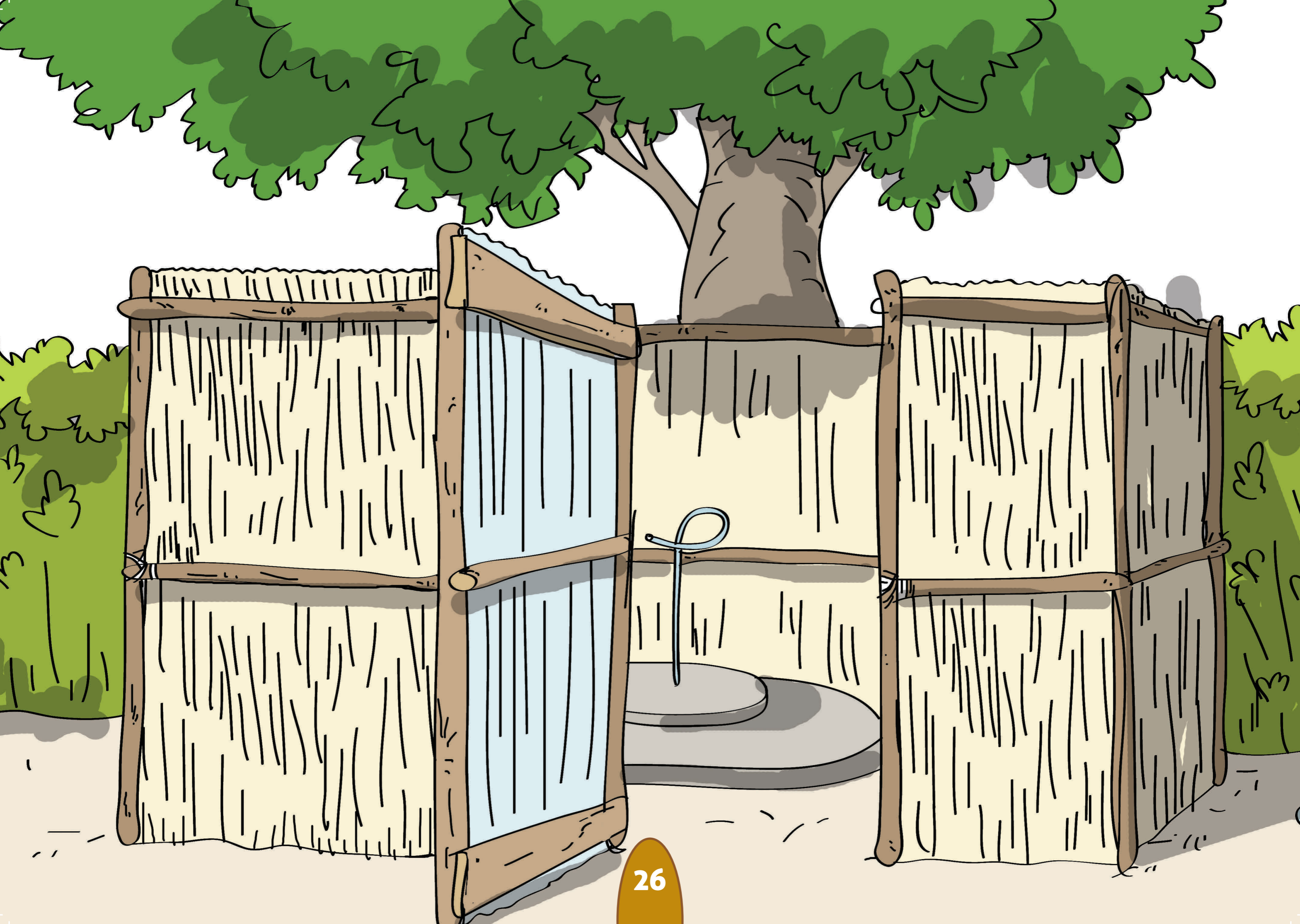
Mwana ononawa mada mbasiyani.



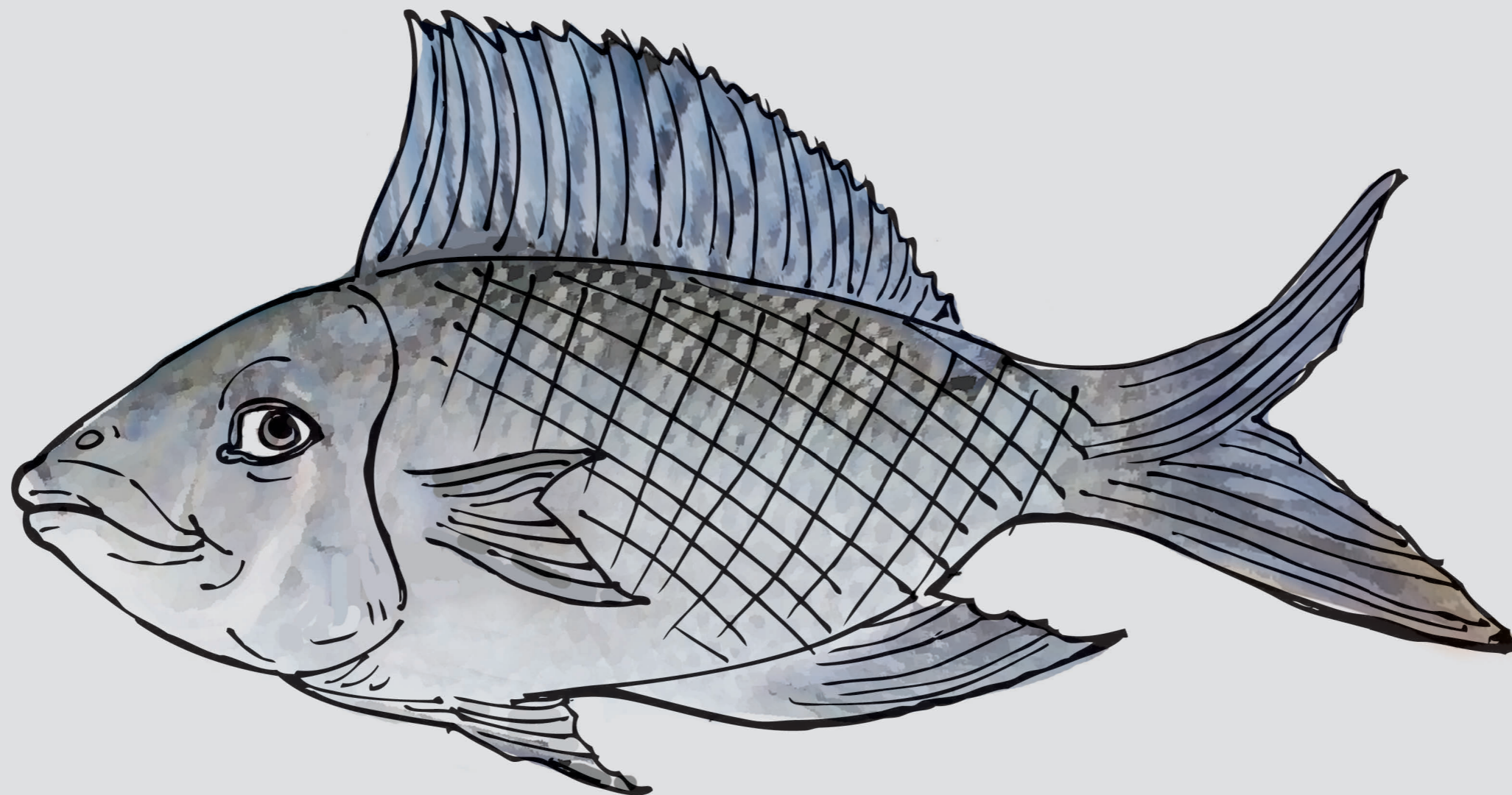
**Mwanamulobwana onowawaddela
magano a oyesa athu wi awene
akaane egumi.**

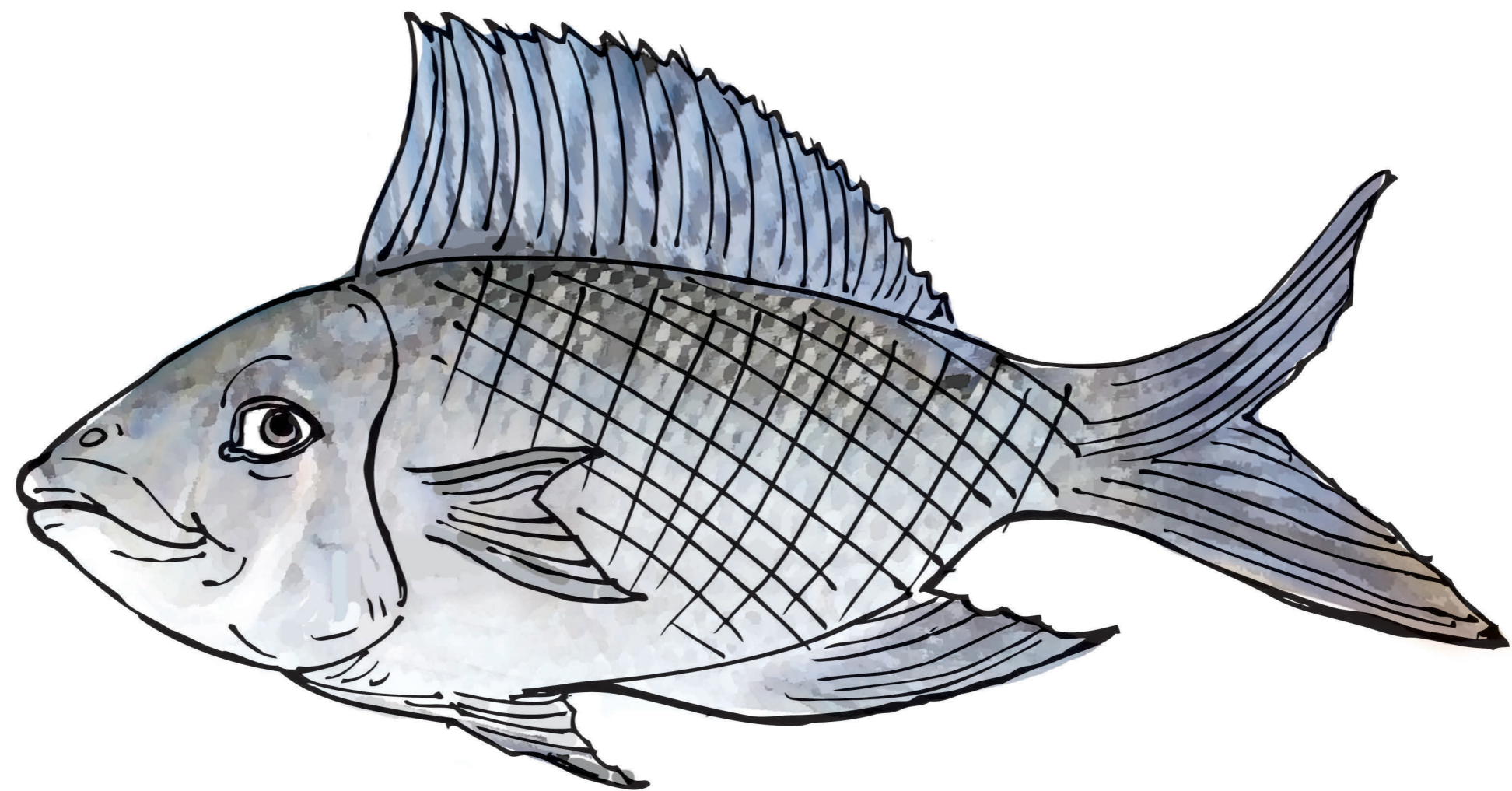


**Athu oteene amala oziwa magano a
oyesa nona akana egumi.**

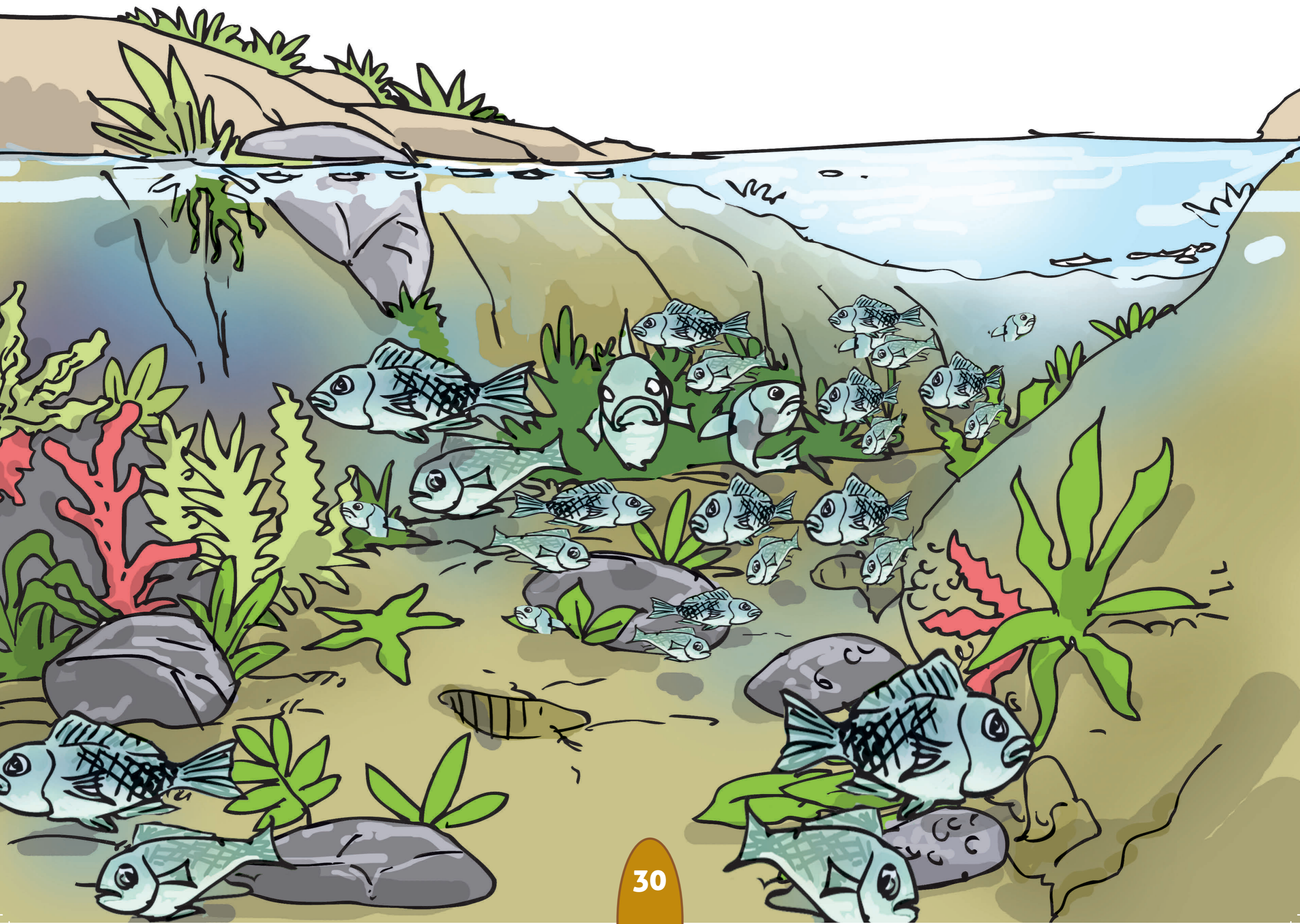


Pendde

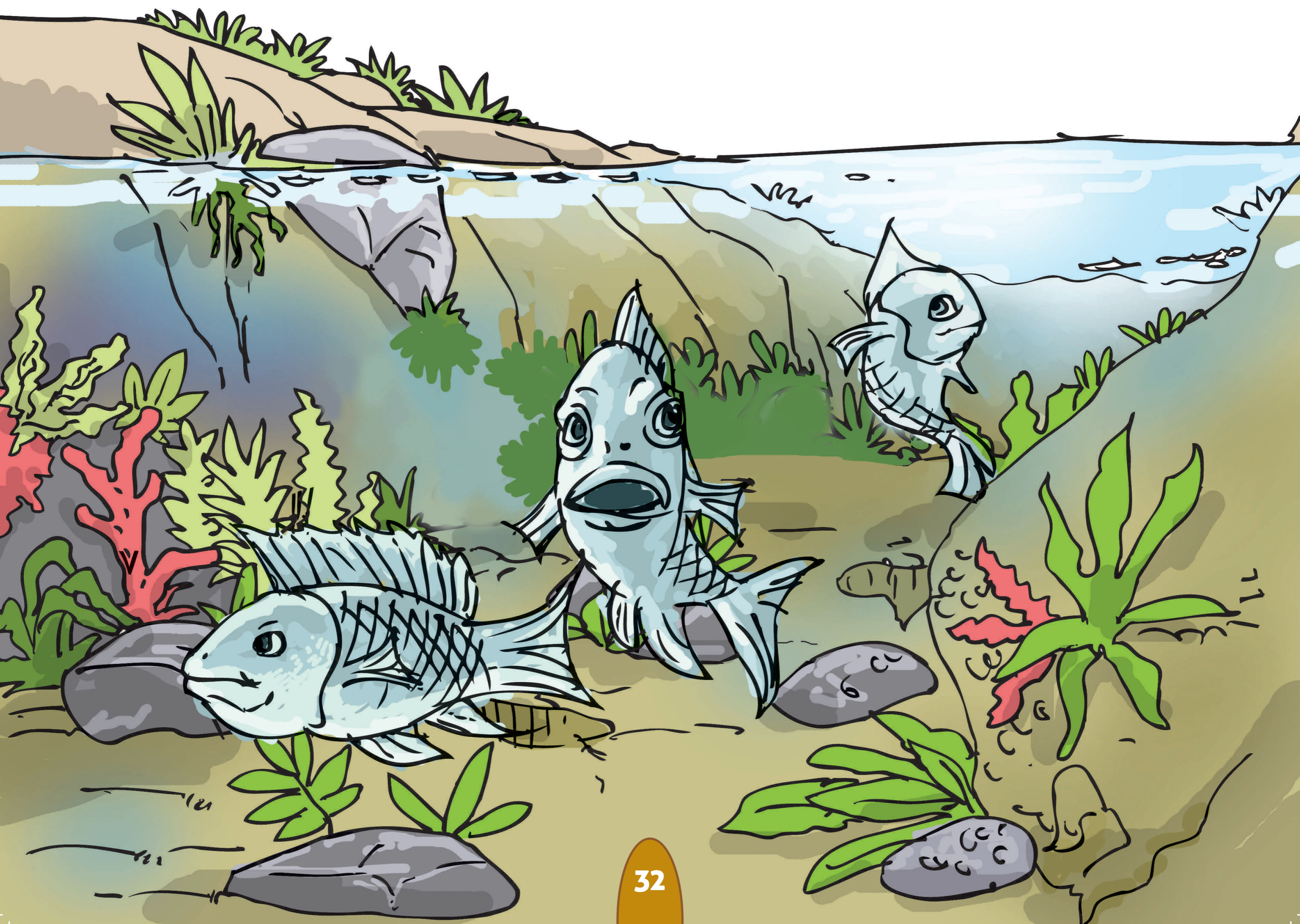




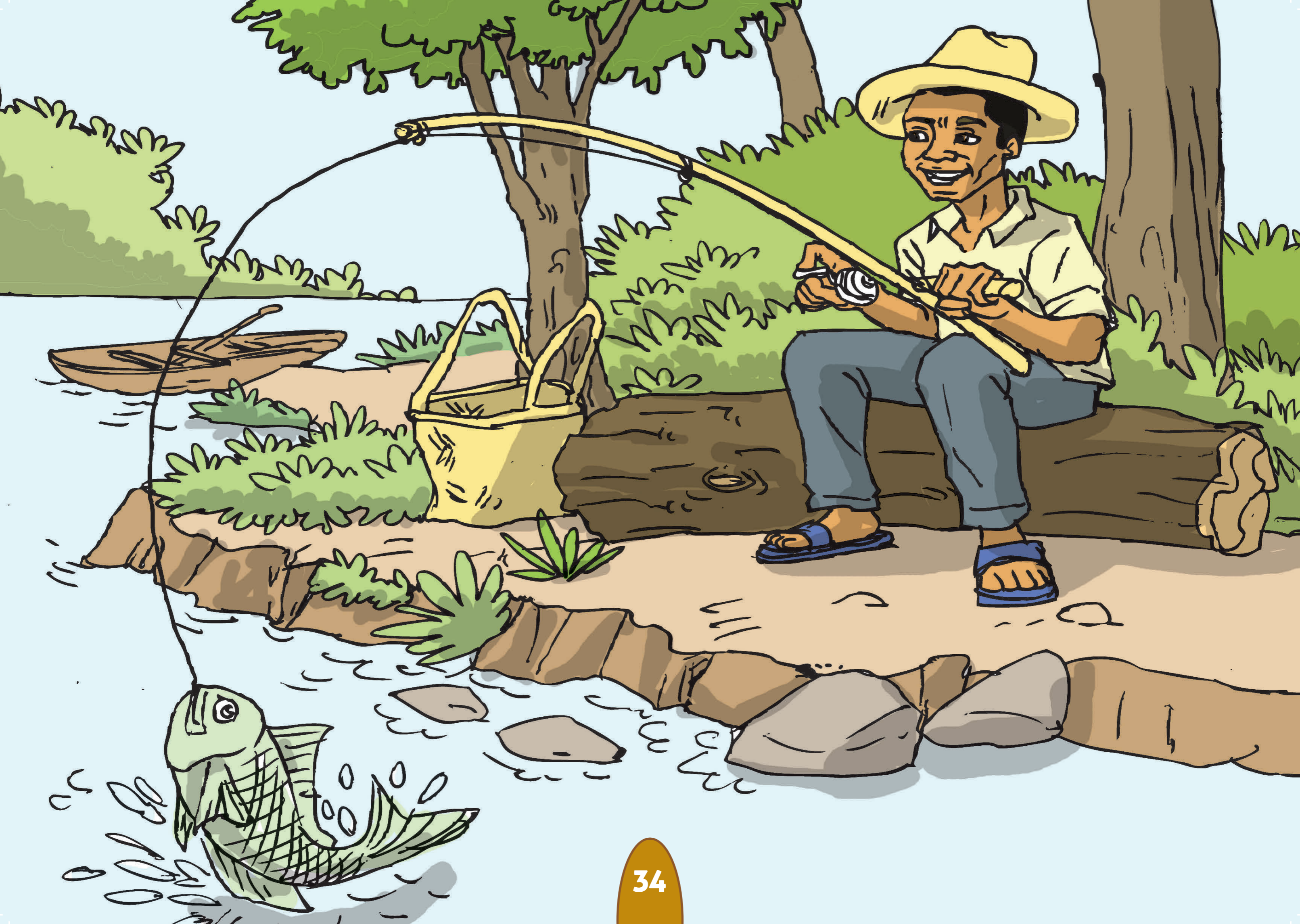
Pendde.



Nikuru na pende ninowabelela.



Dhina pende tharu dhinowabelela.



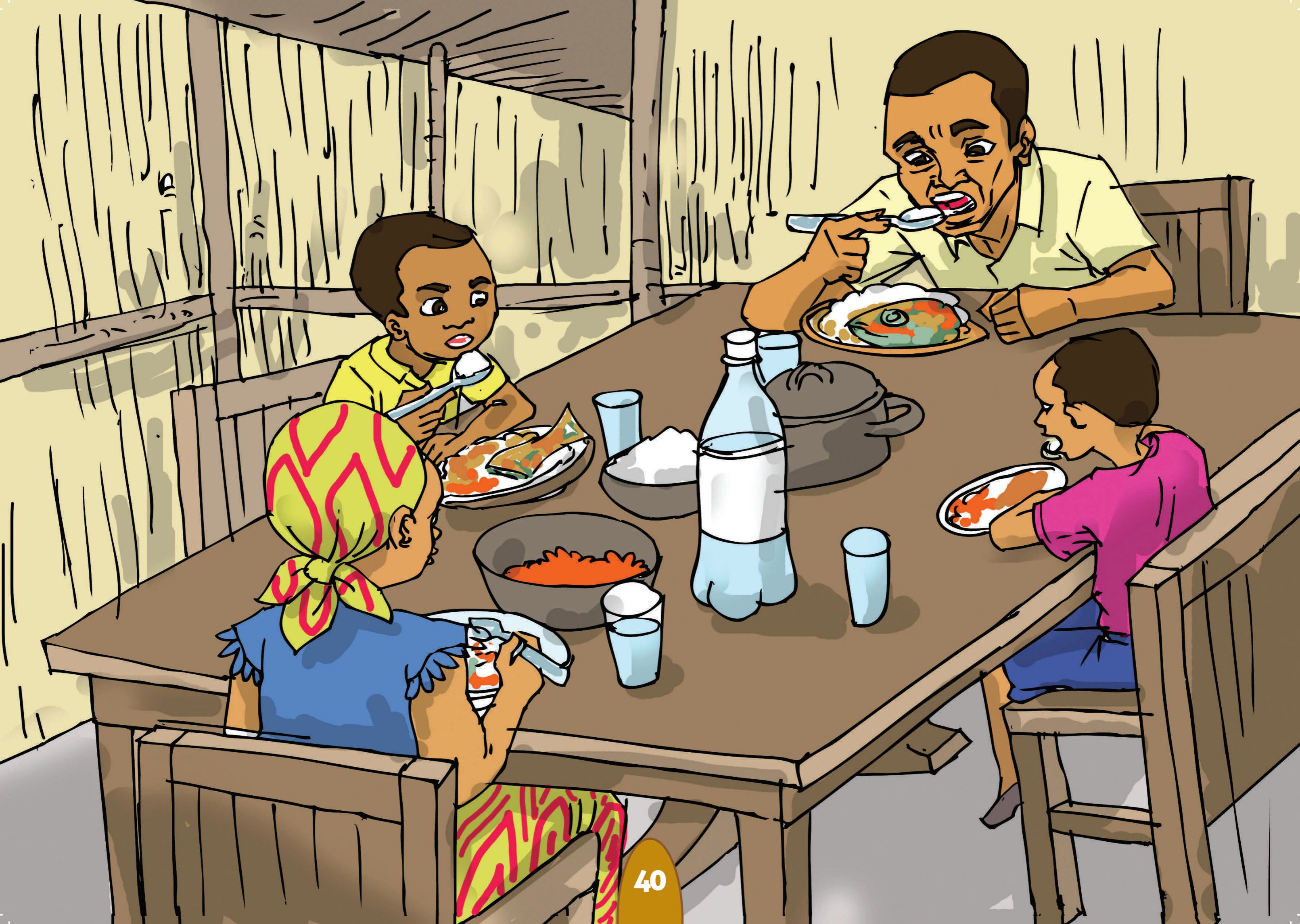
Tituyu Payiva onomeza.



Pendde dhinosaga mwiko.



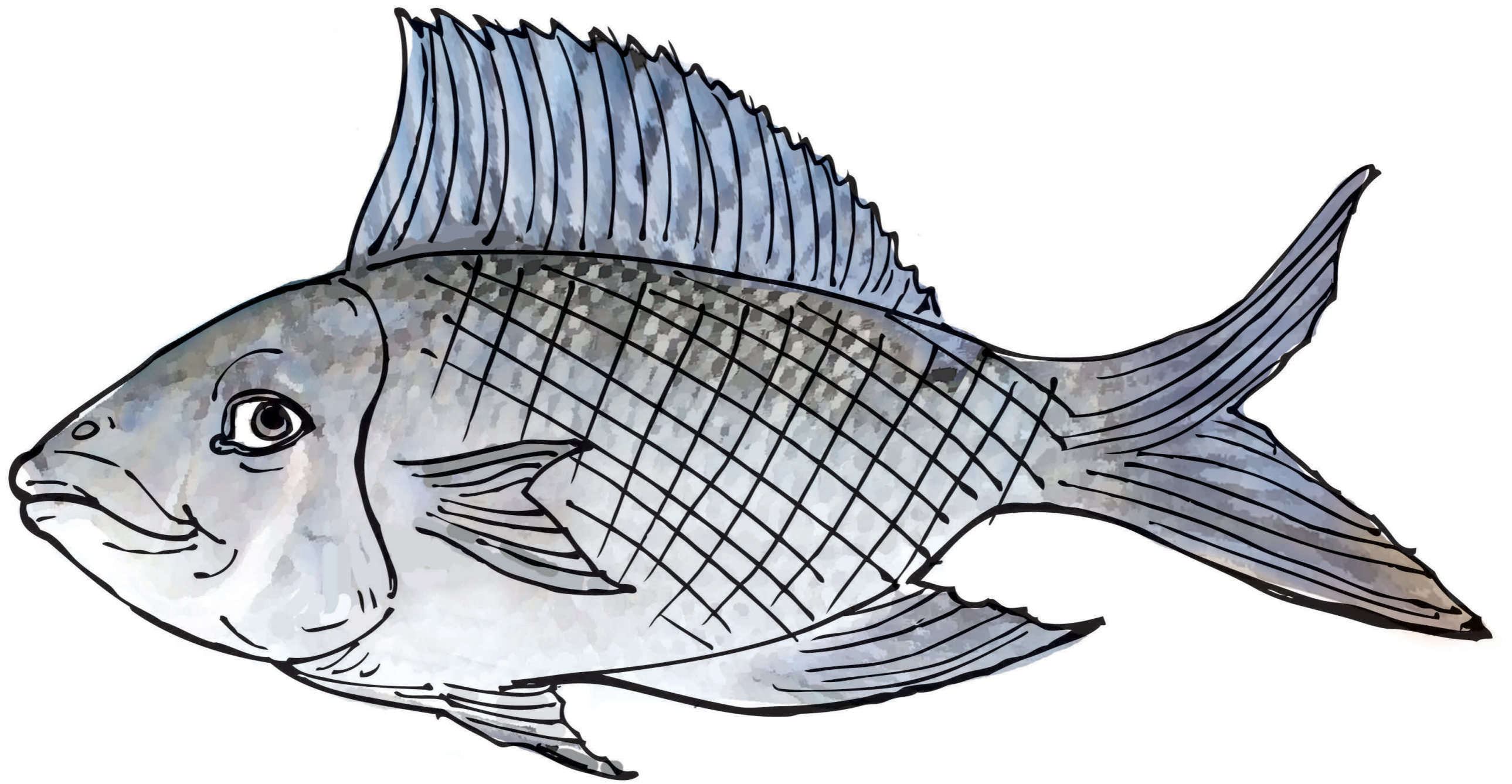
Pendde dhinowabelela dhina dhinooja.



Anamudhi anooja vameza.



Titiyu payiva opa pende.



Oba dhinddimuwa.



