

Mafugi





Mafugi.



Fatu na Fabiwu.



Fatu na Fabiwu anodhowa oddabo.



Fatu na Fabiwu ali oddabo.



Oddabo onolimiwa mafugi.



Mafugi ayitha.



Mafugi a deretu.



Fatu onolima.



Fabiwu onolima.



Fatu onoworuwa.



Fabiwu onowelela koko.



Fatu onavudha lenti.



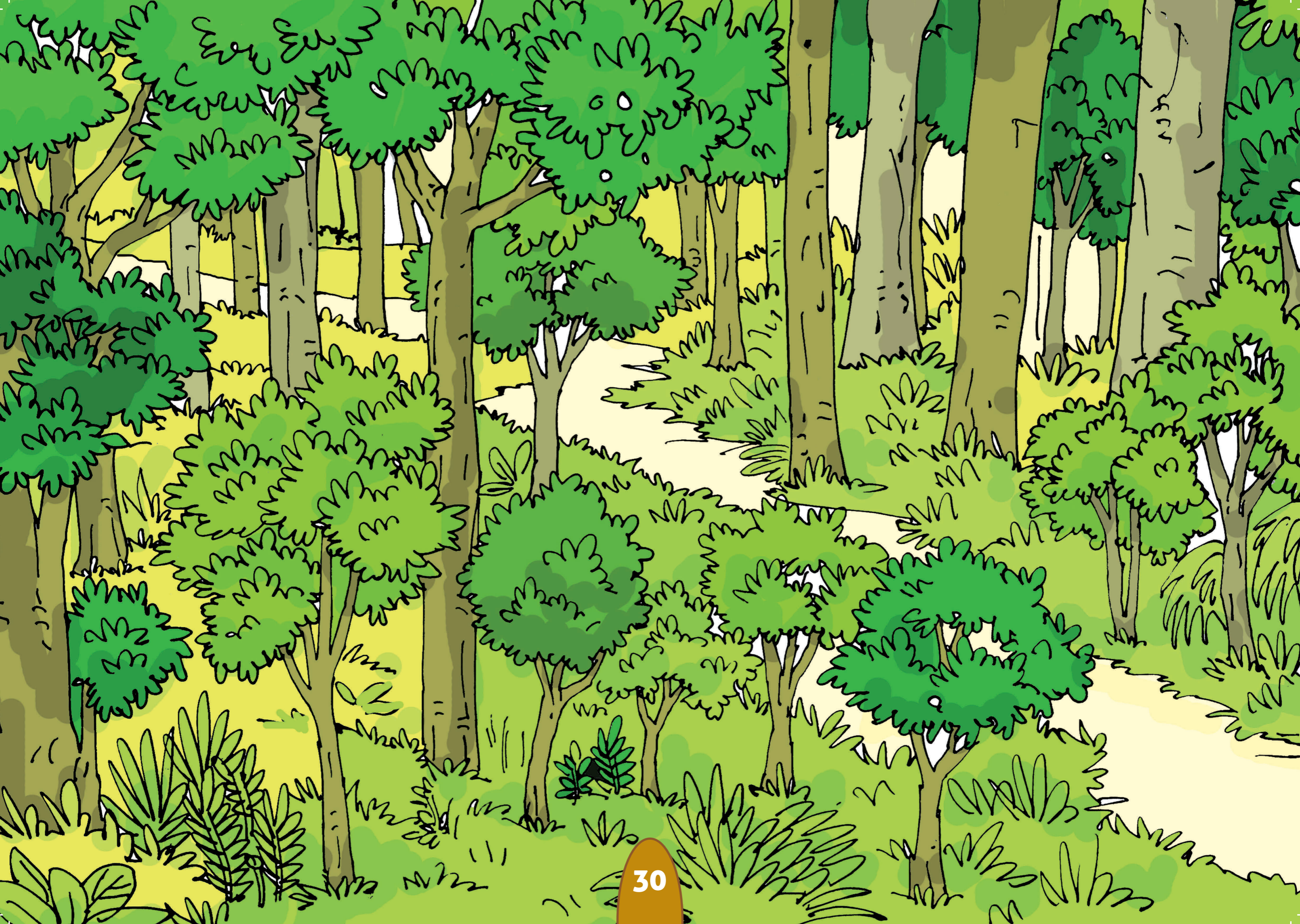


Ogwada miri

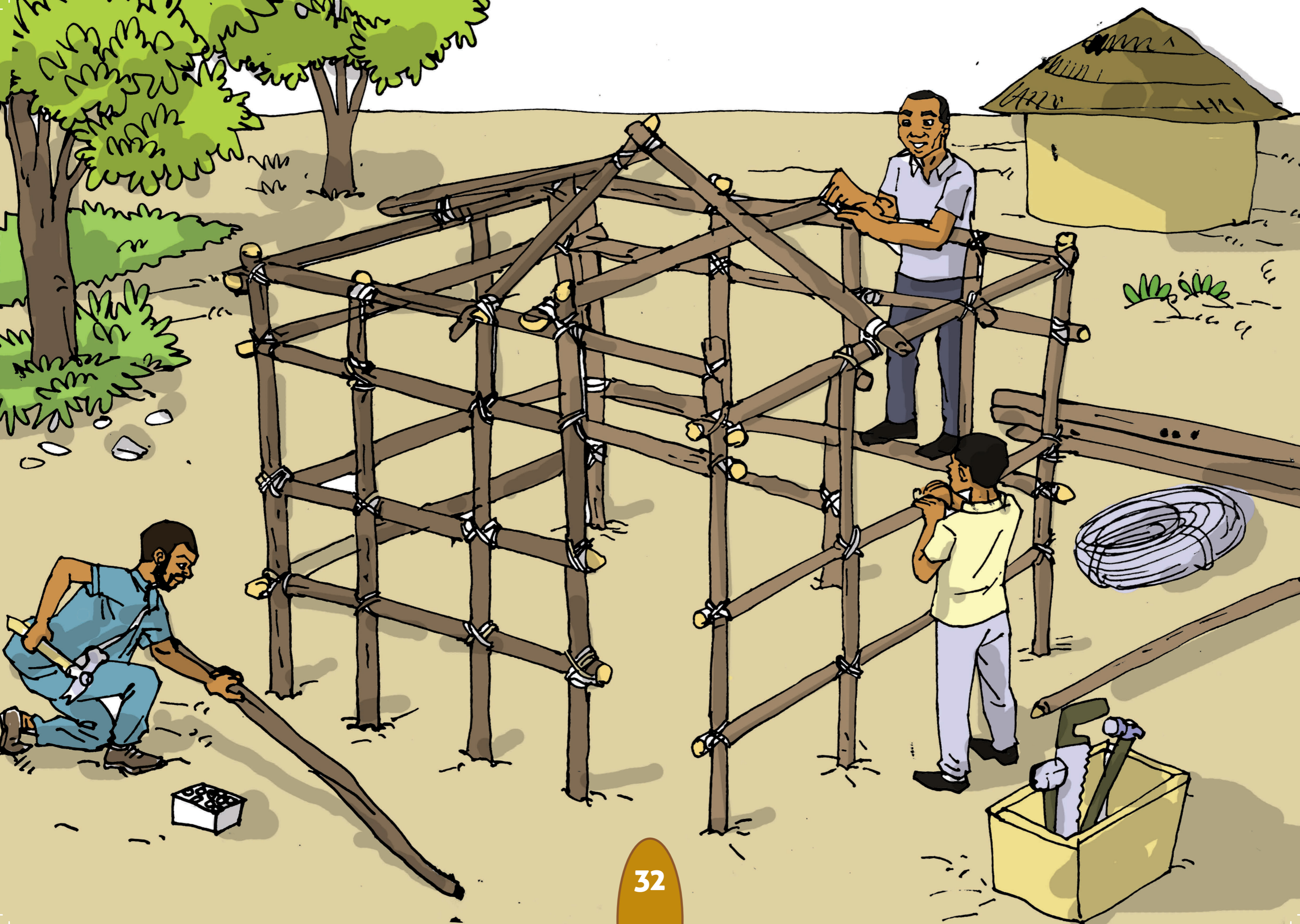
Echuwabo



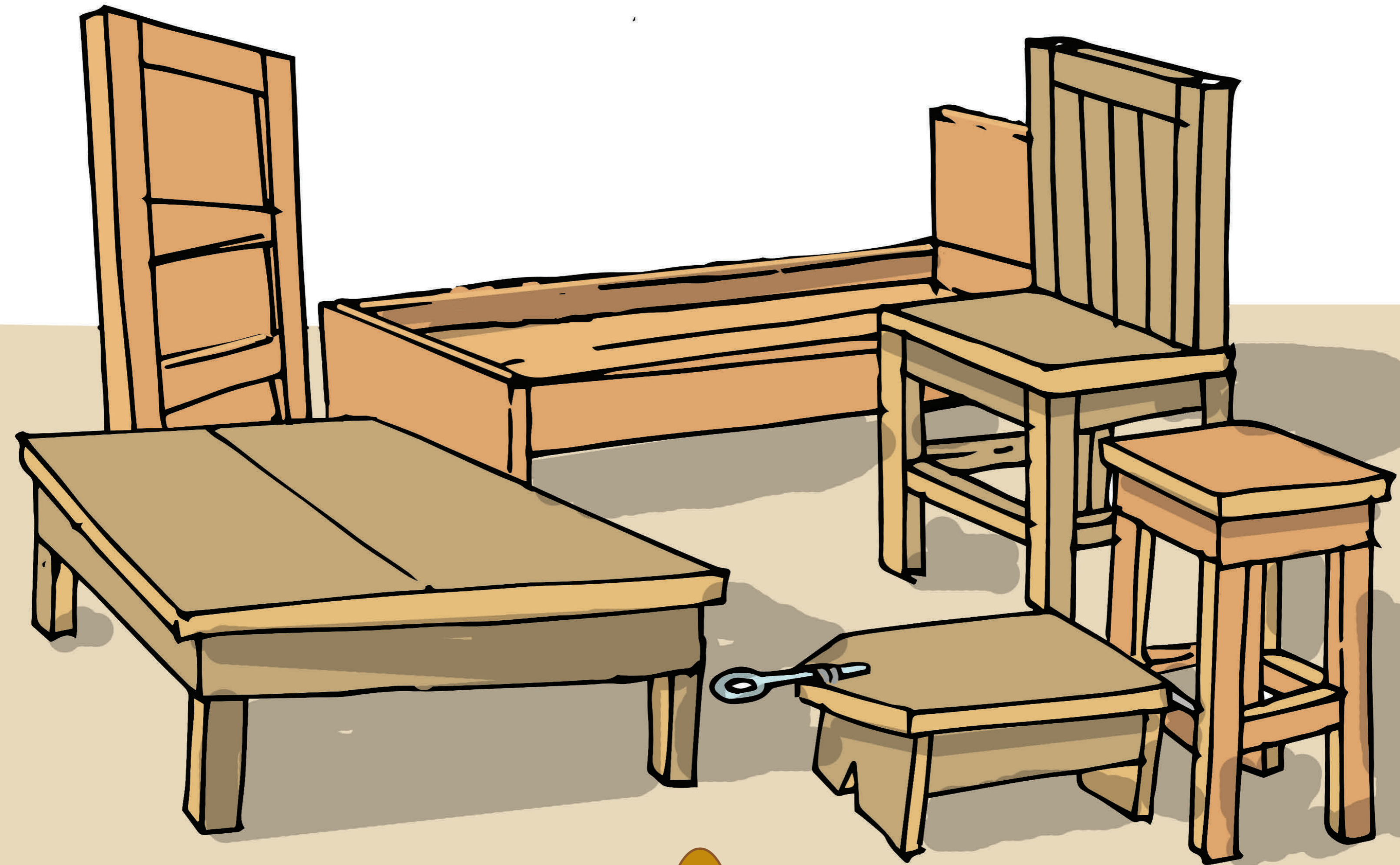
Ogwadda miri.



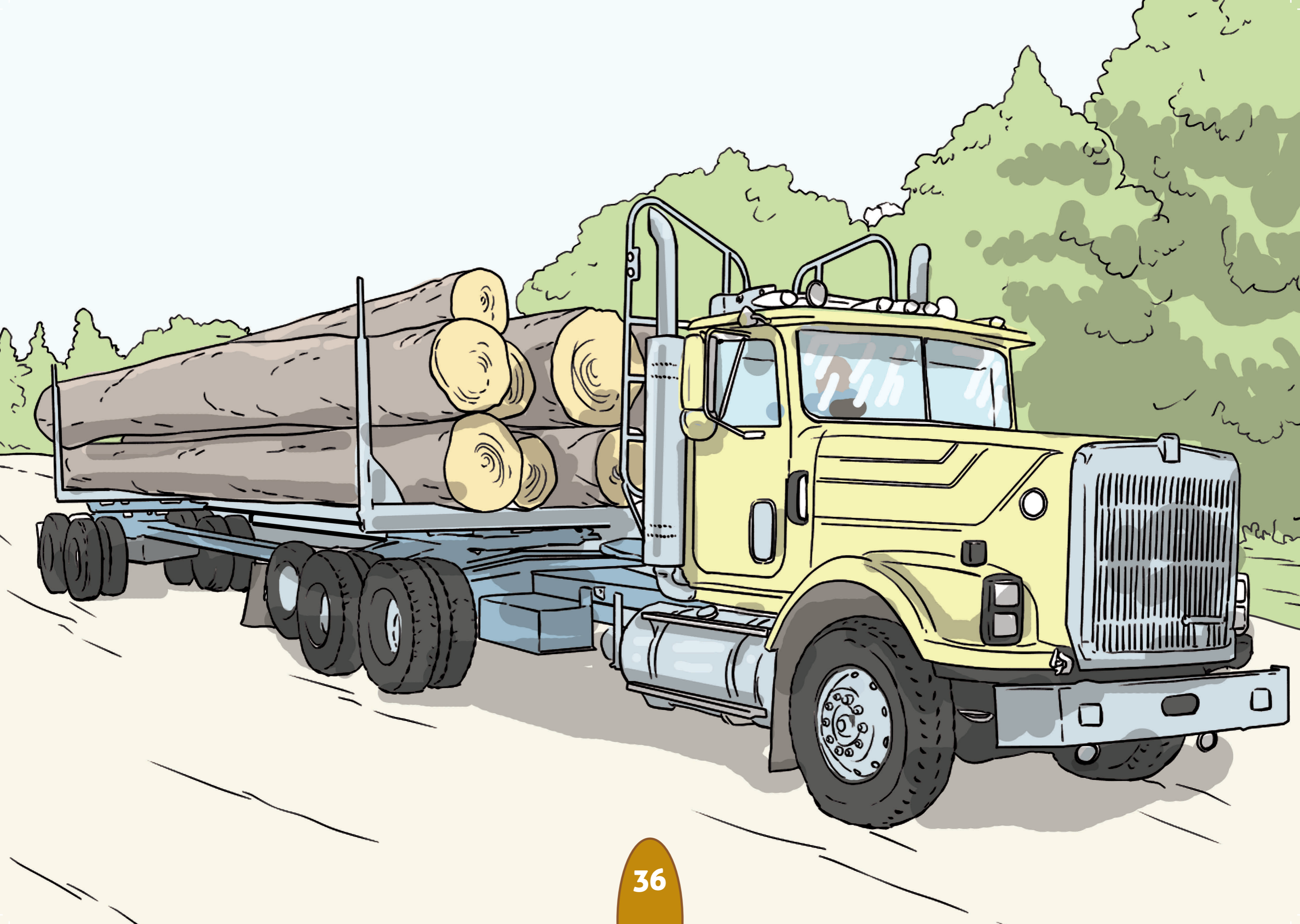
Miri na makupu manddimuwa.



Athu a nomaga nyumba dha miri.



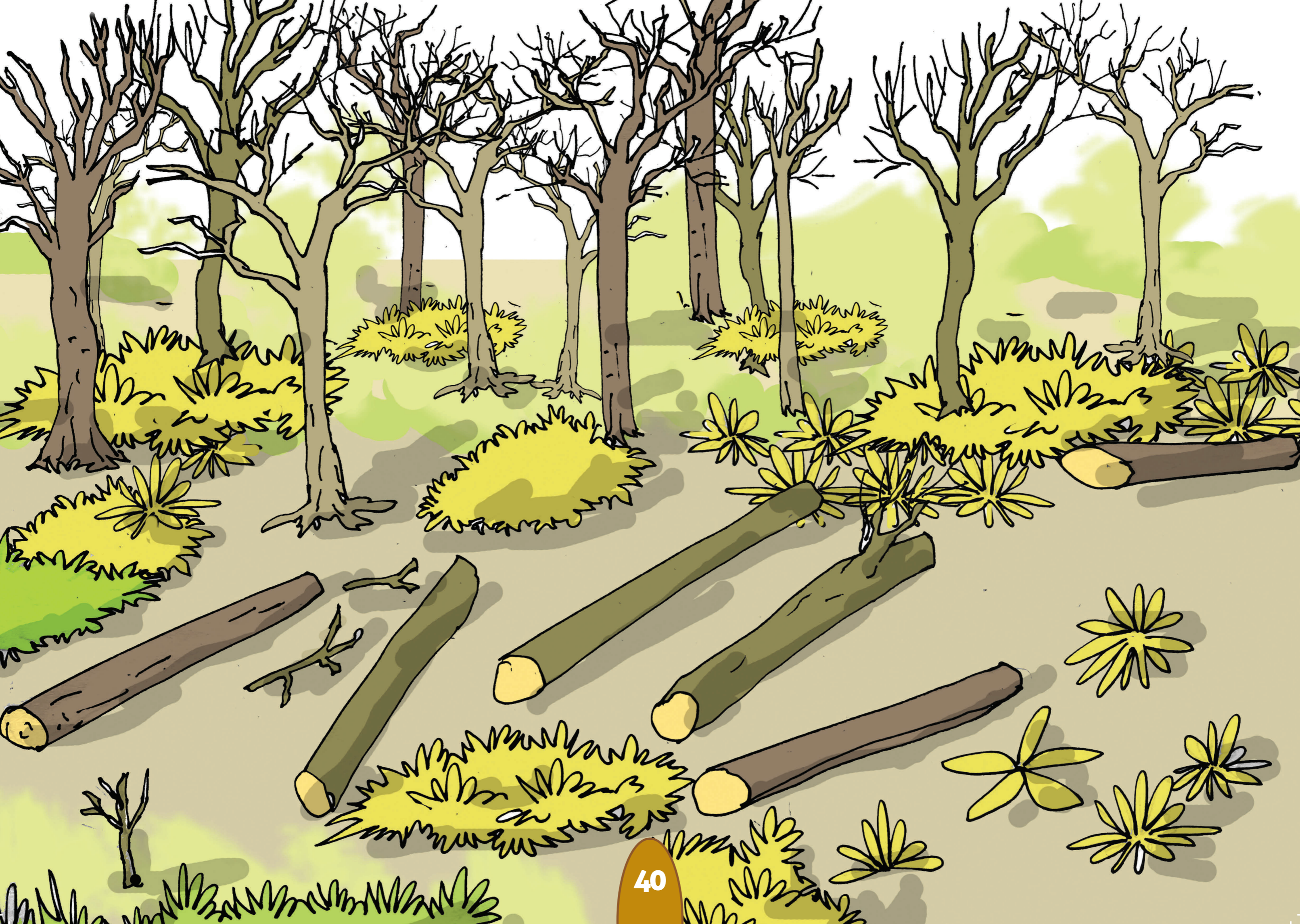
**Kadera, banco arumari
dhinkasanyiwa na miri.**



**Mukukuthu othukula
magoddo a miri.**



**Dhigwaddiwege miri
dhinddimuwa.**



Nddebe nototowa.



**Muthu onogwadda muri
munddimuwa.**



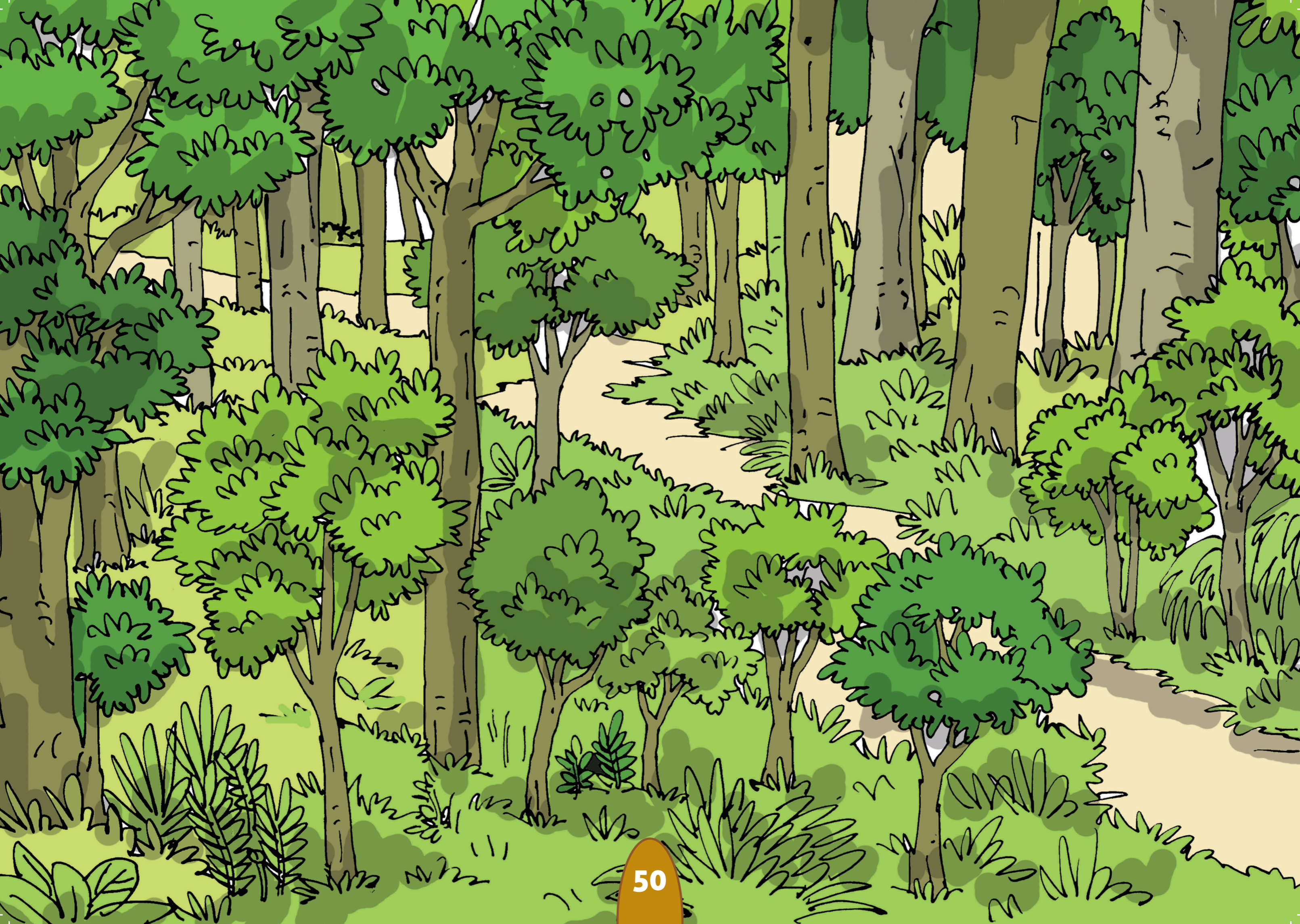
Athu anoceya miri.



**Magoddo a miri ali
mmukukutha wimele.**



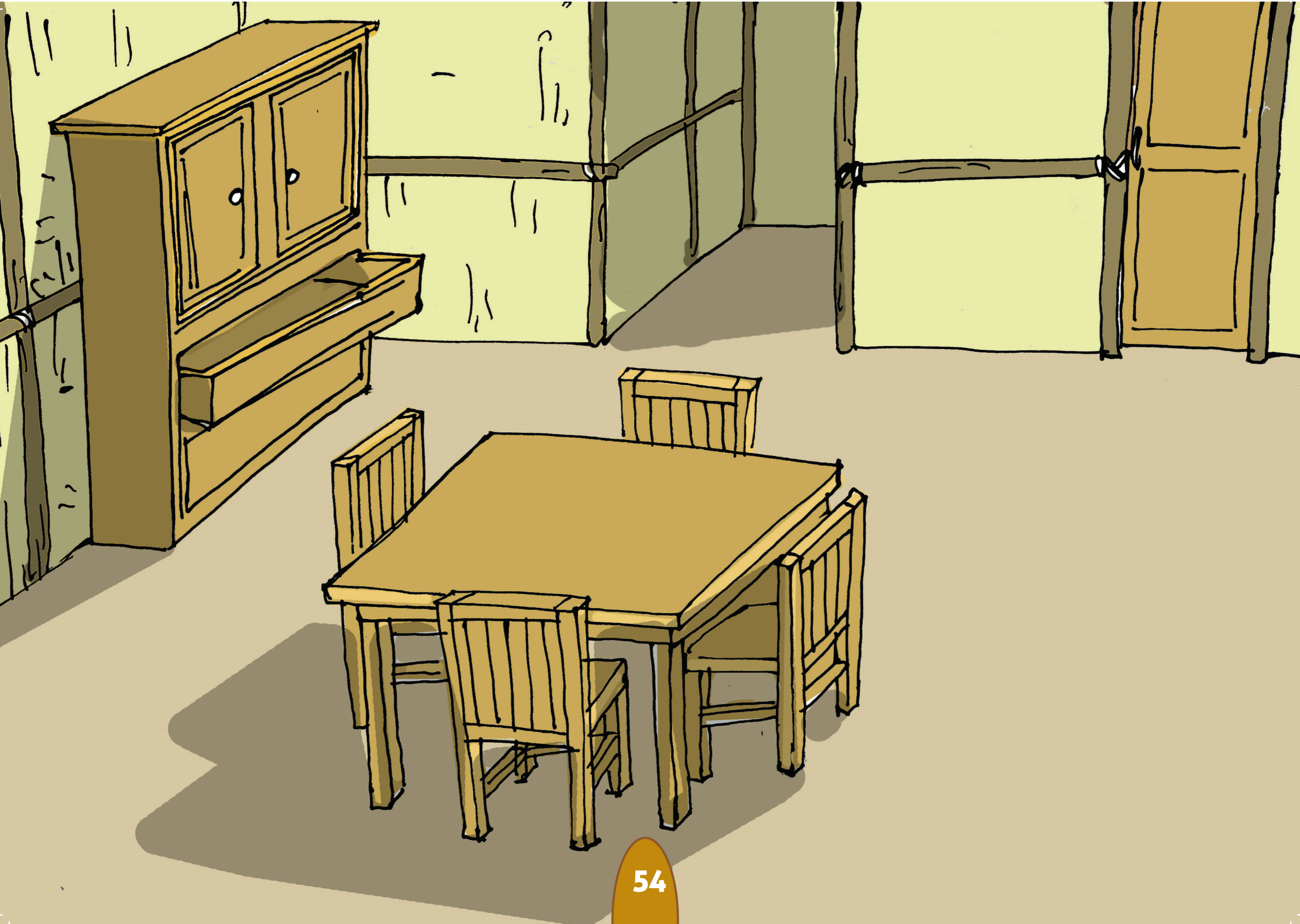
**Enofwanyela ogwadda
miri dhowarala.**



**Nibarelege miri dhing'ono
wi dhunuwe deretu.**



**Muthu onogwadda makupu
a miri dhigwiwe.**



**Nyumba, meza, mpaddo
dhinkosiwa na miri.**

