



REPÚBLICA DE MOÇAMBIQUE  
Ministério da Educação e  
Desenvolvimento Humano

# Eliivuru ya Emakhuwa

Ekalaase ya Neeli



A produção deste livro tornou-se possível graças ao apoio do povo Americano através da Agência dos Estados Unidos para o Desenvolvimento Internacional (USAID). O conteúdo desta publicação é da total responsabilidade do Ministério da Educação e Desenvolvimento Humano da República de Moçambique.

## FICHA TÉCNICA

---

<b>Título:</b>	Eliivuru ya Emakhuwa Ekalaase ya Neeli
<b>Língua:</b>	Emakhuwa
<b>Coordenação Editorial - MINEDH:</b>	Telésfero de Jesus, Laquene Laisse, Vicente Bisque, Dinis Machaul
<b>Vamos Ler!:</b>	Samima Patel, Abdala Machude, Amélia Bazima, Dilson Buque
<b>Autores:</b>	Ana B. Jahamo, Eduardo Napualo, Elmano Mucopo, Júlio Bernardo, Lucas Bonga, Neves Jacinto Anselmo, Saraiva A Aibo
<b>Assessoria Linguística e metodológica:</b>	Carlos Manuel, Maurício Bernardo
<b>Colaboradores:</b>	Remane Selimane, Raquel Raimundo
<b>Ilustração:</b>	Orlando Chissano
<b>Maquetização:</b>	Walter Sambo
<b>Capa:</b>	Orlando Chissano e Walter Sambo
<b>Impressão:</b>	
<b>Tiragem:</b>	
<b>N.º de registo:</b>	9623/RLINLD/2018

República de Moçambique

Financiado pela:



## Omusi..... 8

<b>Esumana 1</b> .....	<b>10</b>
ly Ly .....	10
Mukumano .....	12
<b>Esumana 2</b> .....	<b>13</b>
tth Tth .....	13
Olevelelana.....	15
<b>Esumana 3</b> .....	<b>16</b>
mw Mw.....	16
Okhalihana .....	17
<b>Miteko</b> .....	<b>19</b>
Mawehaweheryo.....	20
Anamwane .....	21
<b>Esumana 5</b> .....	<b>22</b>
kw Kw .....	22
Ewarakha ya amusi.....	23
Ovaanela ni selulaari .....	25
<b>Esumana 6</b> .....	<b>26</b>
rw Rw .....	26
Okhomasa.....	27
Mukhulupale a elapo ahu .....	29
<b>Esumana 7</b> .....	<b>30</b>
pw Pw .....	30
Mi ni amusi aka.....	31
Amusi awe Nono.....	33
Mawehaweheryo .....	34
Kwaatu .....	35
<b>Esumana 9</b> .....	<b>36</b>
khw Khw .....	36
Etakhwa .....	37
Ekhweyi.....	39

## Exikola..... 40

<b>Esumana 10</b> .....	42
<b>ry Ry</b> .....	42
Nihiku na oxikola .....	43
Nihiku na mwaana .....	45
<b>Esumana 11</b> .....	46
<b>ttw Ttw</b> .....	46
Nihiku na athiyana .....	47
Ihakhi sa anamwane .....	49
Mawehaweheryo .....	50
Khwatte ni ilyakhu .....	51
<b>Esumana 13</b> .....	52
<b>my My</b> .....	52
Hapipa ni Aputu .....	53
Myopo .....	55
<b>Esumana 14</b> .....	56
<b>phw Phw</b> .....	56
Osoma oreera .....	57
Ikano sa apurusoori .....	59
<b>Esumana 15</b> .....	60
<b>py Py</b> .....	61
Muhuru .....	63
Mawehaweheryo .....	64
Epyo .....	65
<b>Esumana 17</b> .....	66
<b>thw Thw</b> .....	66
Osoma ni wiipa .....	67
Okathi wa isepwere .....	69
<b>Esumana 18</b> .....	70
<b>sy Sy</b> .....	70
Musyakiha .....	71
Miri .....	73

## Muttetthe..... 75

<b>Esumana 19</b> .....	76
<b>tw Tw</b> .....	76
Enupa ya Twaaha .....	77
Twaayifa ni akhwaawe .....	79
Mawehaweheryo .....	80
Epyo .....	81

<b>Esumana 21</b> .....	<b>82</b>
<b>tthw Tthw</b> .....	<b>82</b>
Enika yoottokottha .....	83
Xunita .....	85
<b>Esumana 22</b> .....	<b>86</b>
<b>vy Vy</b> .....	<b>86</b>
Ekalawa .....	87
Moonelo ooweetta .....	89
<b>Esumana 23</b> .....	<b>90</b>
<b>sw Sw.</b> .....	<b>90</b>
Okhapelelana .....	91
Swaati .....	93
Mawehaweheryo .....	94
Paasoopa ikwerere .....	95
<b>Esumana 25</b> .....	<b>96</b>
<b>tthy Tthy</b> .....	<b>96</b>
Selulaari .....	97
Ehapari ya elapo .....	99
<b>Esumana 26</b> .....	<b>100</b>
<b>n' N'</b> .....	<b>100</b>
Nsoope .....	101
Esimano .....	103
<b>Esumana 27</b> .....	<b>104</b>
<b>m' M'</b> .....	<b>104</b>
Mulyakhu ni khole .....	105
Mapawe a inama .....	107
Mawehaweheryo .....	108
Etthyaako ya n'wenene .....	109

## **Nlaka** .....

<b>Esumana 29</b> .....	<b>112</b>
<b>mm Mm</b> .....	<b>112</b>
Namarokolo .....	113
Namarokolo ni etthepo .....	115
<b>Esumana 30</b> .....	<b>116</b>
<b>mp mph mpw</b> .....	<b>116</b>
Olimela ematta .....	117
Miri sa mutakhwani .....	119

<b>Esumana 31</b> .....	<b>120</b>
<b>nn Nn</b> .....	<b>120</b>
Maasi .....	121
Orattela maasi .....	123
Mawehaweheryo .....	124
Mphivi wa mmiravo .....	125

## **Erutthu ya mutthu ni ekumi ..... 127**

<b>Esumana 33</b> .....	<b>128</b>
<b>nk nh nl</b> .....	<b>128</b>
Okumi .....	129
Erutthu ya Nkuukhi .....	131
<b>Esumana 34</b> .....	<b>132</b>
<b>nt nr nth</b> .....	<b>132</b>
Ekuwo ya Nono .....	133
Oratta wa Amina .....	135
<b>Esumana 35</b> .....	<b>136</b>
nc nv nx .....	136
Ohakalala .....	137
Ayipu .....	139
Mawehaweheryo .....	140
<b>Hiyo niniwela nkukutta</b> .....	<b>141</b>







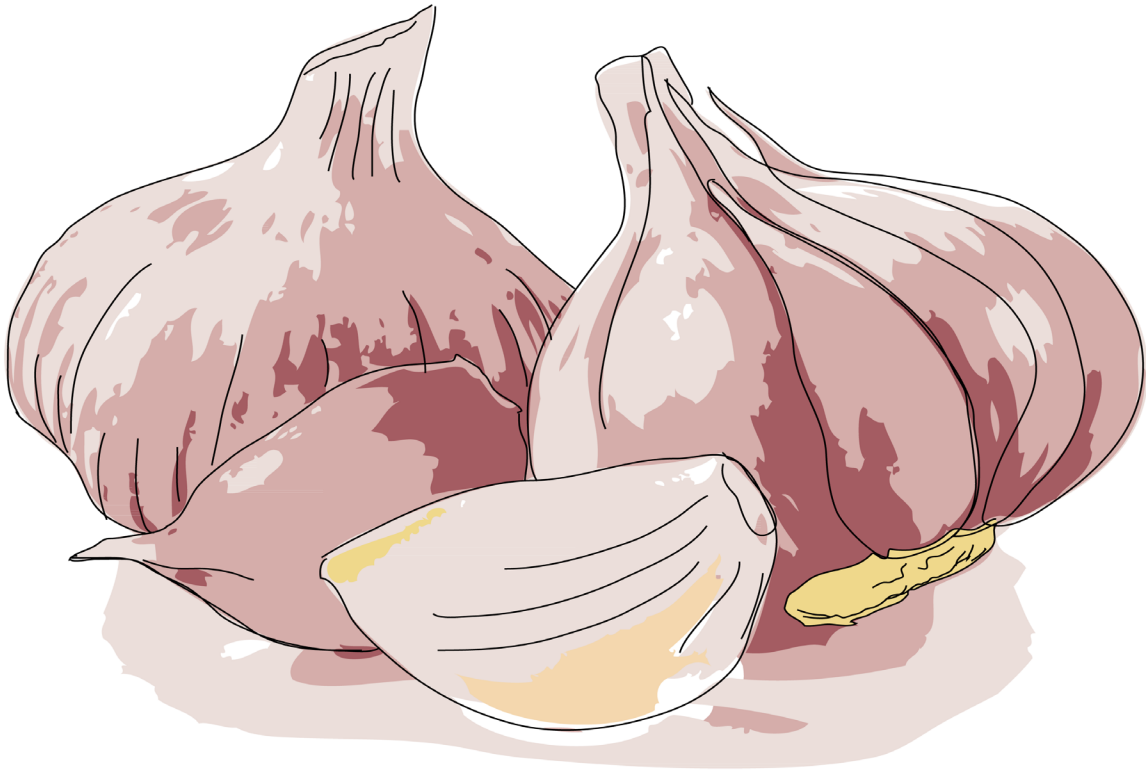
# OMUSI



## Esumana 1



ly Ly



aa lyu o lya e yoo lya mu lye lyo



lyaaka olya aalyu mulyelyo  
eyoolya



Mulyelyo onoopiwa ni oloko.  
Mulyakhu onisiva aheliwa  
aalyu.



- 1 Onoona exeeni?
- 2 Awo anipakasa exeeni?
- 3 Ari axaana akavi?



## Mukumano

Amina oomukhomasa Nuunu.  
Nuunu ohaakhula saana.  
Owo namapaka a mulyelyo.  
Nuunu omusivela mulyelyo.  
Mulyelyo onipakiwa ni oloko.

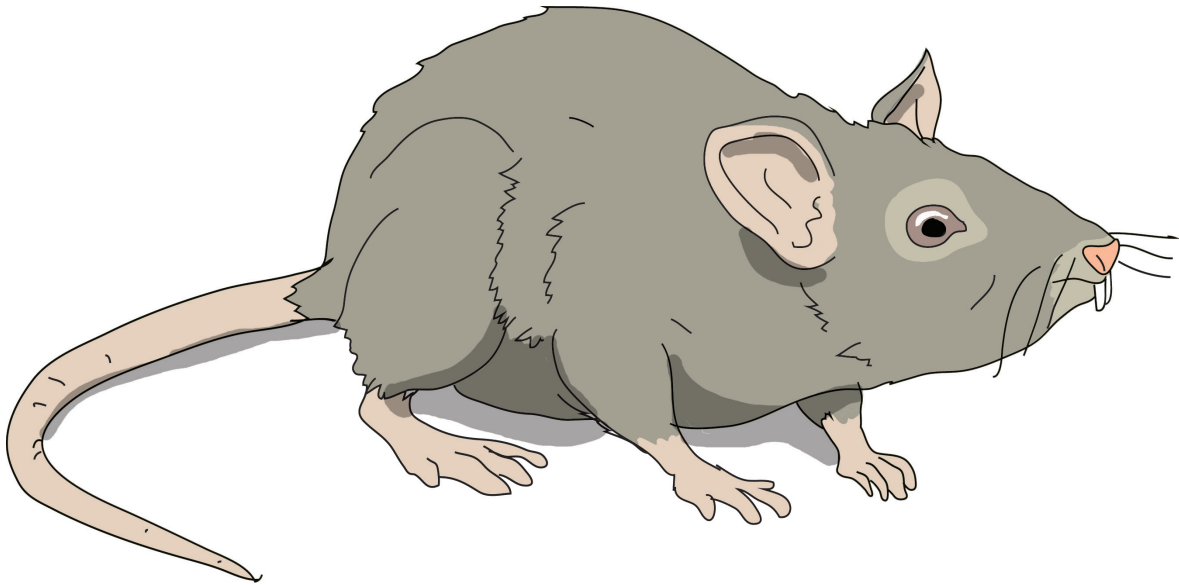


- 1 Amina onilavula ni ani?
- 2 Nuunu onipaka exeeni?
- 3 Mulyelyo oniheliwa exeeni?

## Esumana 2



tth Tth



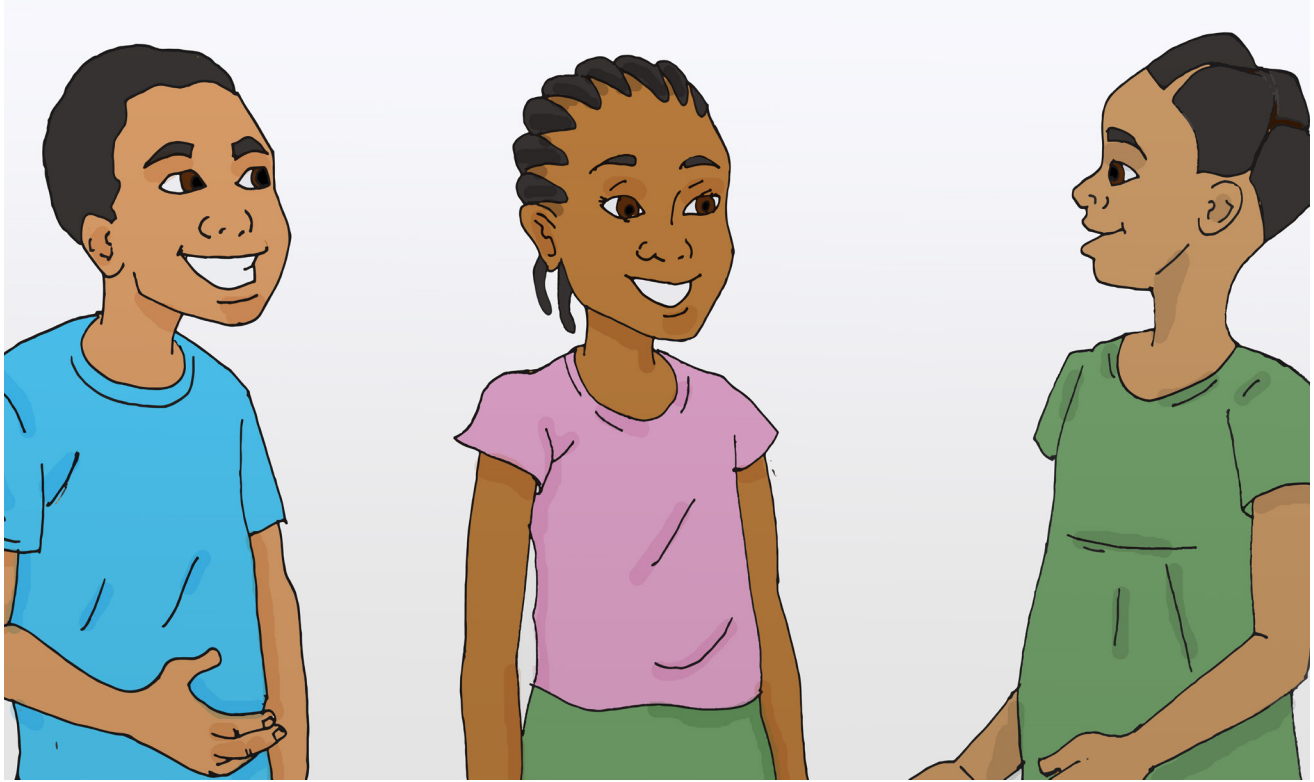
ottha pa otthe ka ottha va ttho ro



Tthoro tthupili  
otthava mukottha



Tthoro omusivela mattuvi.  
Ana onimutthava Rosita.  
Rosita ootthapela otthaviwa.



- 1 Onoona exeeni?
- 2 Onaaweha atthu akavi?
- 3 Emamu onipaka exeeni?
- 4 Nipake exeeni wiira nisuwelane?



## Olevelelana

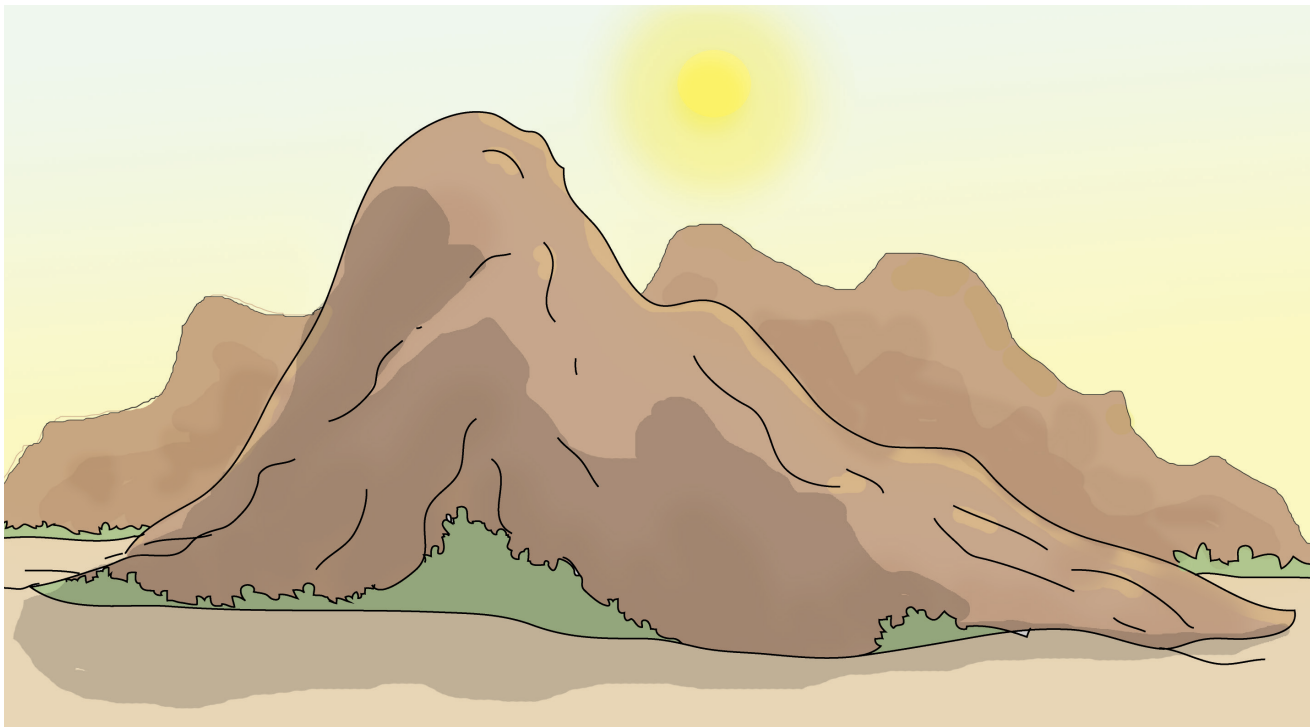
Suraya oomuthekela Riitu.  
Riitu oonanariwa nootthekeliwa.  
-Mukilevelele mwaha ola, Riitu.  
Suraya ooleveleliwa ni Riitu.  
Atthu aleveke mulattu.



- 1 Ti ani anikela mumutthakani?
- 2 Ti ani otthekale?
- 3 Suraya aavekela exeeni?
- 4 Mulattu owo waahimala?



**mw Mw**



mwa ri mwi ri mwee ko



Mwaako mwala mweeri mwiri  
mwaalo mwiikho



Mwiri onitekeliwa enupa.  
Elapo ahu yookhalana mwaako.  
Mwaako ole ti wooreera.





## Okhalihana

Liitiya ori omwala.

Owo ookuxa mwithi.

Mwanaaxa ookuxa meelee.

Liitiya oovela othita meelee.

Mwanaaxa oomutthula Liitiya othita.

Liitiya ooxukhurela.



- 1 Ti ani anikela mumutthakani?
- 2 Liitiya aarowale woowi?
- 3 Owo aakuxale exeeni?
- 4 Mwanaaxa aapaka exeeni?



- 1 Onoona exeeni?
- 2 Rahema onipaka exeeni?
- 3 Ari atthu akavi?



## Miteko

Matetewu onilima omwaako.

Owo onipaha tho makhala.

Ana awe aamutthula olima.

Amwene waasivela olimiha.

Awo vo aakoha omatta wa Matetewu.

- Ematta ya apaapa enikhala omwaako.

Ohaakhula mwana awe Matetewu.



① Matetewu onilima woowi?

② Ana awe anipaka exeeni?

③ Ematta ya Matetewu eri vayi?

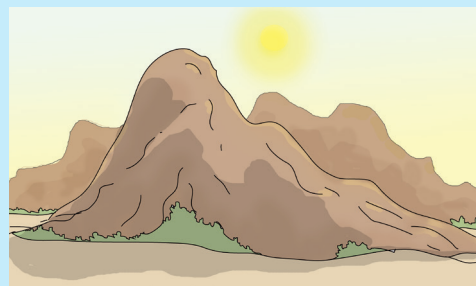
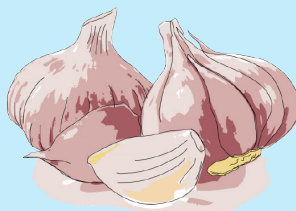
# MAWEHAWEHERYO



ly Ly

tth Tth

mw Mw



ttho ro

aa lyu

mwa pu

o ttha va

e yoo lya

mwa pa ra

mu ko ttha

mu lye lyo

o mwe ne



tthoro

eyoolya

mwaapara



Rosita ootthapela otthaviwa.

Otthaviwe ni Ana.

Mulyakhu osivexa aheliwa aalyu.

Omwala sinikatthiwa ikuwo.



## Anamwane

Anamwane axexe yaalyiha ipuri.

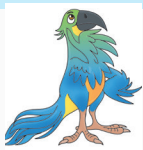
Awo khiyaarowa oxikola.

Amwene yaahivaanela ni atthu.

-Mwaakuxe anamwane oxikola.

-Mwaavahe ekateerunu ni elaapixi.

Vaavo anamwane yaahirowa oxikola.



- ① Anivara exeeni anamwane ala?
- ② Amwene yiirale exeeni?
- ③ Anamwane yaavahiwe exeeni?



kw Kw



Kwaa tu  
ereekwa

Mu kwe re tho  
Mu to kwee ne



Kwaatu Kweretha Kwaliya  
Mukweretho Mutokweene  
ereekwa



Ohimumane Kwaatu.  
Omukwate paahi.  
Okuxe mukweretho ni ereekwa.  
Orowe wakuxe ethokwa.



## Ewarakha ya amusi

Kapiitu oophiya wa amusi awe.  
Owo namutthaka a mikweretho.  
Atokweene aakweretha muhupi.  
Muhupi ti wa osoma wa Kapiitu.  
- Kapiitu oovira ekalaase ya neeli.  
Amusi aatthapela ehapari eyo.

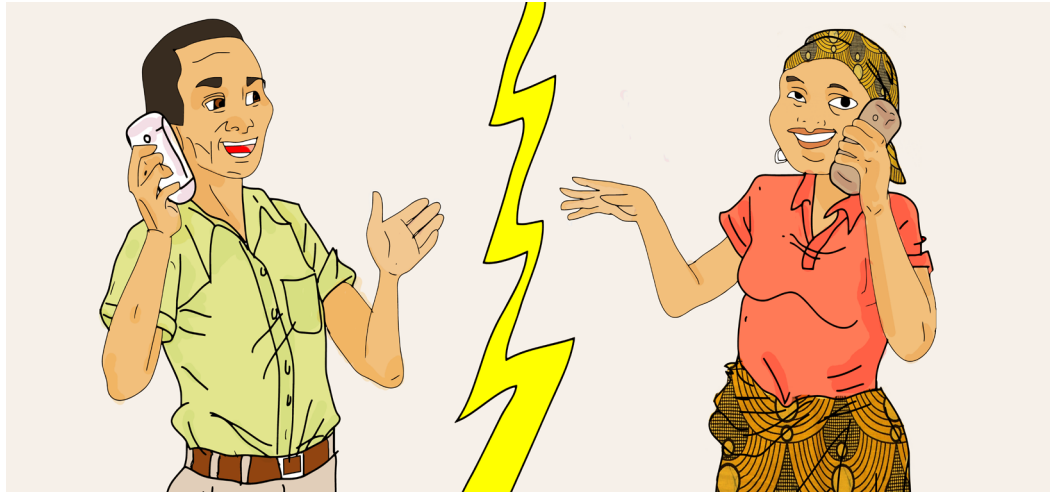


- 1 Ti ani arwaanale ewarakha?
- 2 Kapiitu namutthaka a exeeni?
- 3 Amusi yahaakhelela mutthaka?



- 1 Atthu ala aniira exeeni?
- 2 Mulopwana onivaha exeeni?
- 3 Ari atthu akavi?
- 4 Ti ani onaakhela exoronaale?





## Ovaanela ni selulaari

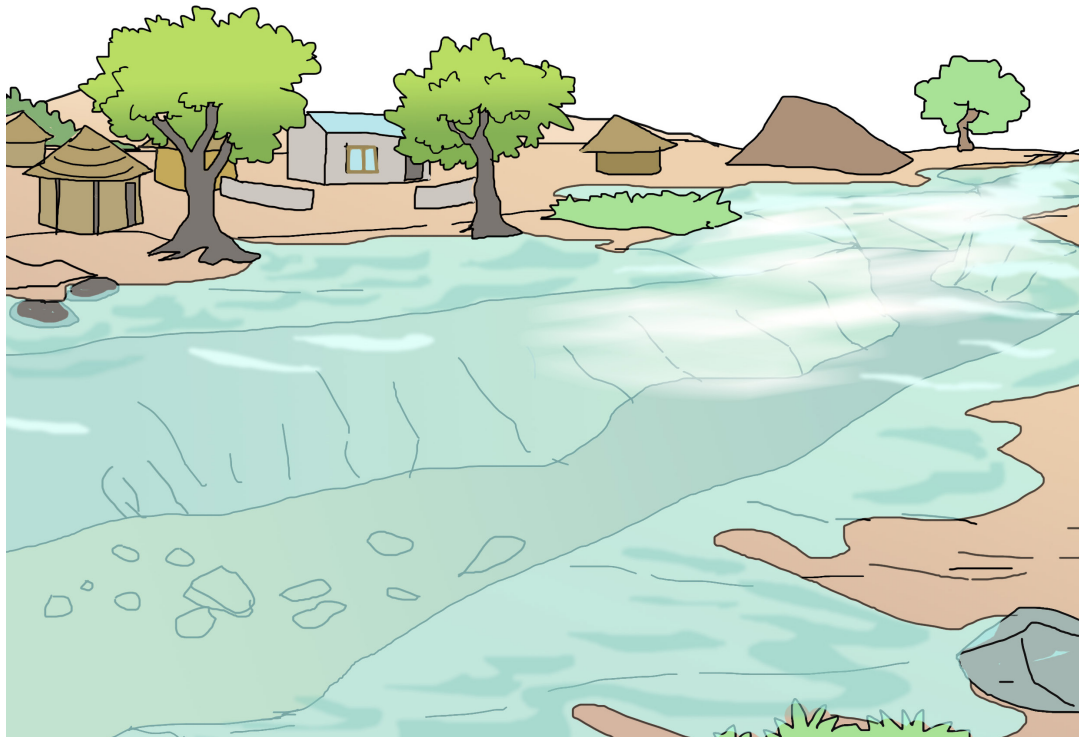
Akwaliya anikhala Olalawa.  
Amusi aya anikhala Omaputu.  
Olelo anilavula ni amwaara aya.  
Akwaliya anahapari a selulaari.  
Amwaara aya anamwaakhela.  
Awo anilavula ihapari sooreera.



- 1 Amusi aya Akwaliya ari woowi?
- 2 Akwaliya Anilavula ni ani?
- 3 Anilavula ni exeeni?
- 4 Amwaara aya aniira exeeni?



**rw Rw**



O rwee la O rwaa na Na mu rwa



rweela Orwaana Namurwa

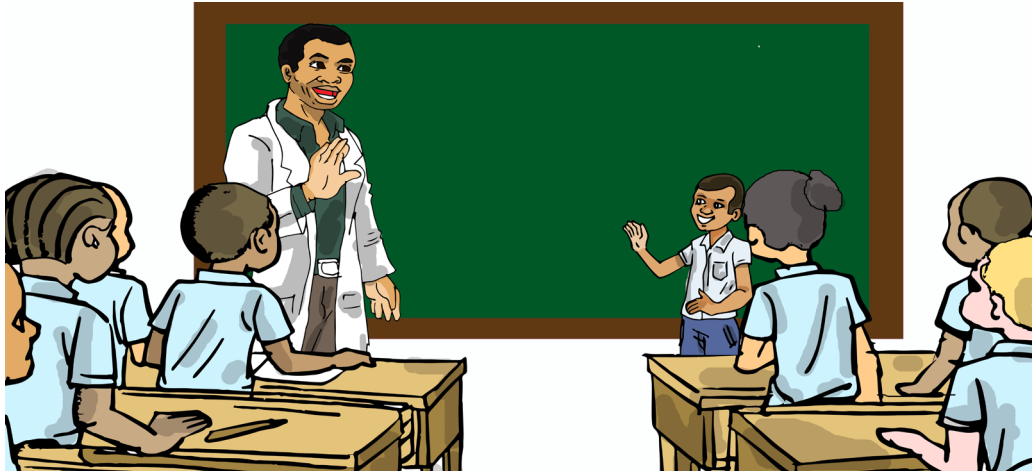


Murweele ethokwa ela.

Murwe mumuveere mattuvi.

Omuro aarweela maasi ooreera.

Namurwa muletto a elapo.



## Okhomasa

Anaxikola ahoorwa oxikola.

Awo anaakhomasa apurusoori.

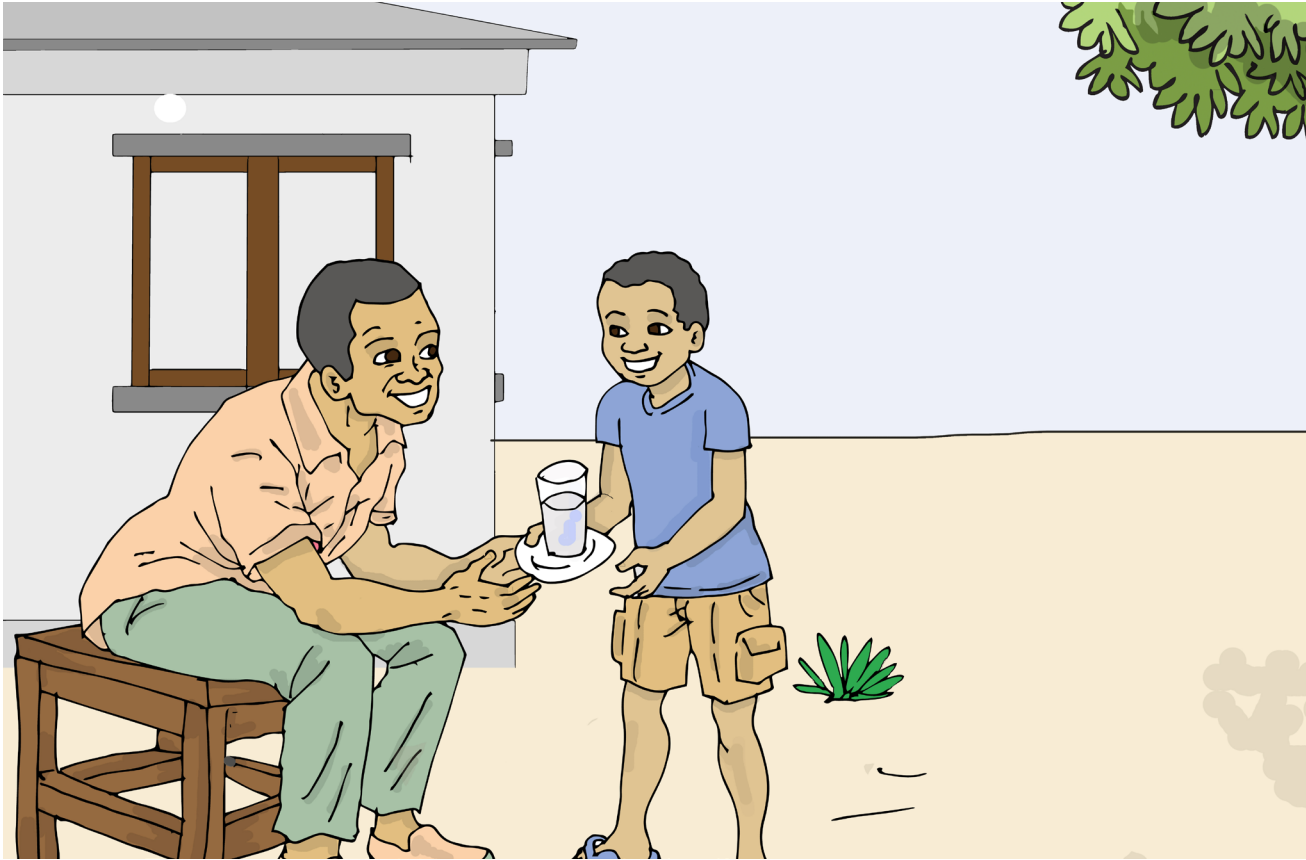
Apurusoori anirweela osomiha.

Mulavulo wa aanaxikola ti wooveya.

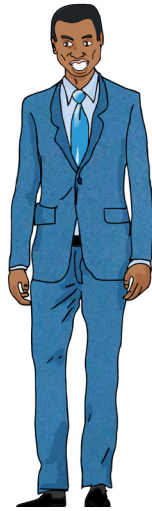
Hiyo nirweeleke oxutta muttittimiho.



- 1 Anaxikola anaakhomasa ani?
- 2 Apurusoori anikhomasiwa sayi?
- 3 Atthu aalupale anikhomasiwa sayi?



- 1 Onoona exeeni?
- 2 Mulopwana onaakhela exeeni?
- 3 Ari atthu akavi?
- 4 Atthu aalupale anireerela exeeni?



## Mukhulupale a elapo ahu

Olelo ahoorwa atokweene.

Muttetthe tho ookhalana atokweene.

Yarwa akhulupale naakhomase.

Awo anirwaana murettele mulaponi.

Nitthapeke yarwa akhulupale ahu.



- 1 Ti avi atokweene a muttetthe ahu?
- 2 Atokweene ti ani?
- 3 Exeeni onikhalaawe mukhulupale a elapo?
- 4 Nuulumeke sayi ni akhulupale?



**pw Pw**



A pwaa pu

Na pwii pi

O pwa ru le la

E pwee sa



Pwaapu pwexa Apwaapu

opwarulela opwexa epweesa



Epweesa enikhala muphareya.

Apwiyamwene aapwata.



## Miyo ni amusi aka

Miyo ki Muusa.

Miyo kinilavula ni apaapa.

Apaapa apwaapu a Amina.

Awo yaathala mwiri.

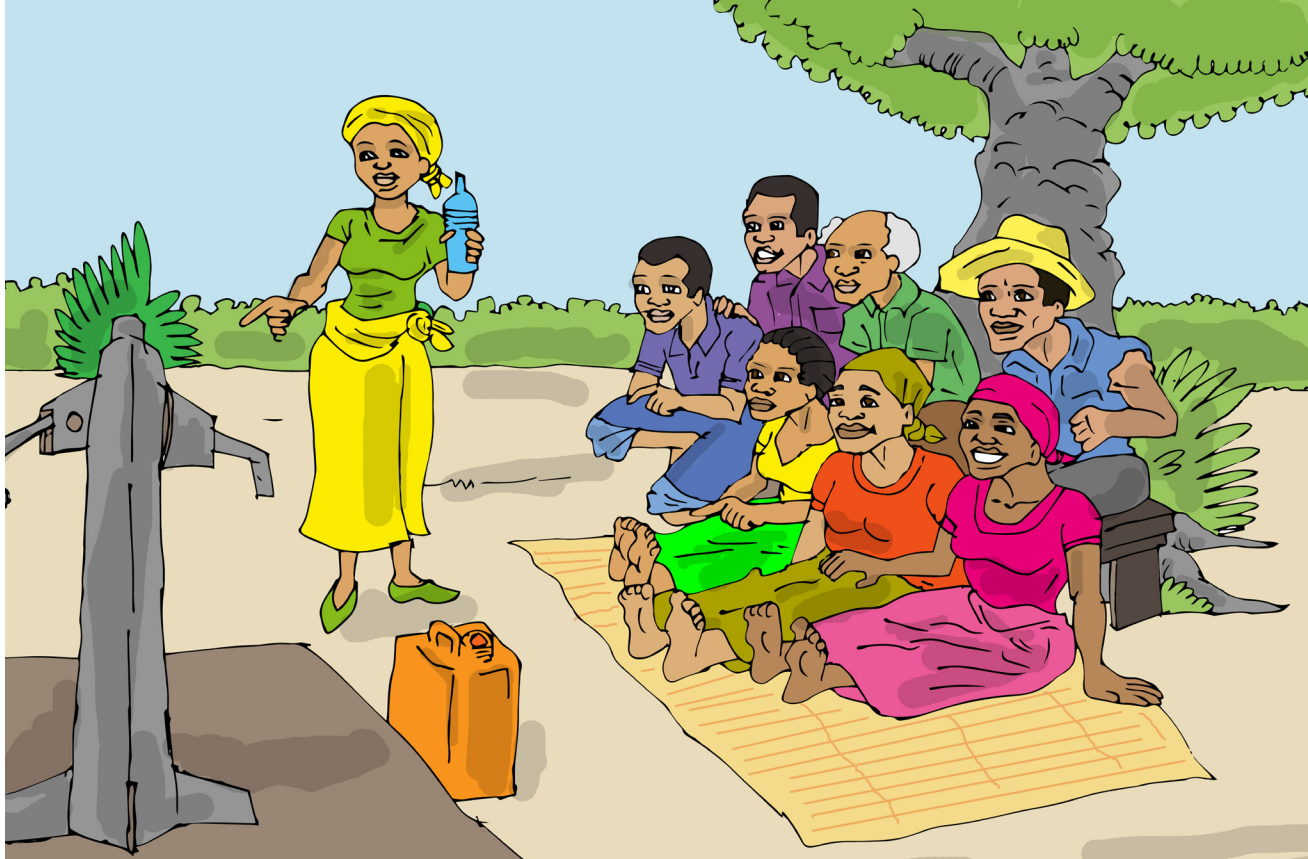
Amina ookuxa ikhuni sa apaapa.

Owo onirowa waapeya epweesa.

Epweesa yoowuuma osiva.



- 1 Anipaka exeeni apapu awe Muusa?
- 2 Ti ani yaathala mwiri?
- 3 Amina onirowa waapeya exeeni?
- 4 Epweesa xeeni enisivexa?



- 1 Onoona exeeni veelatarato ela?
- 2 Muthukumano ola ti a exeeni?
- 3 Epootiri ela eri exeeni?
- 4 Etthu yooreerela orattela maasi?





## Amusi awe Nono

Nono onikhala ni amusi awe.  
Apwaapu awe xoofeeri.  
Nono oorapiha mukukutta.  
Apwaapu awe aaxukhuru.  
Awo anirowa othuma musoro.  
Anirowa omuthuma tho napwiipwi.



- 1 Nono onikhala ni ani?
- 2 Muteko wa apwaapu awe ti ovi?
- 3 Ti ani orapihale mukukutta? Apwaapu awe anirowa woowi?

# MAWEHAWEHERYO



kw Kw

rw Rw

pw Pw



Kwaa tu

O rwee la

Pwaa pu

E ree kwa

O rwaa na

O pwe xa

Mu to kwee ne

Na mu rwa

O pwa ru le la



Epweesa

Mukweretho

Orwa

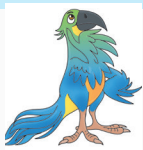


Epula yarupa ihopa sinoopwina omuro.  
Maasi aarweela ohimeni.  
Mwaattittimihe atokweene.



## Kwaatu

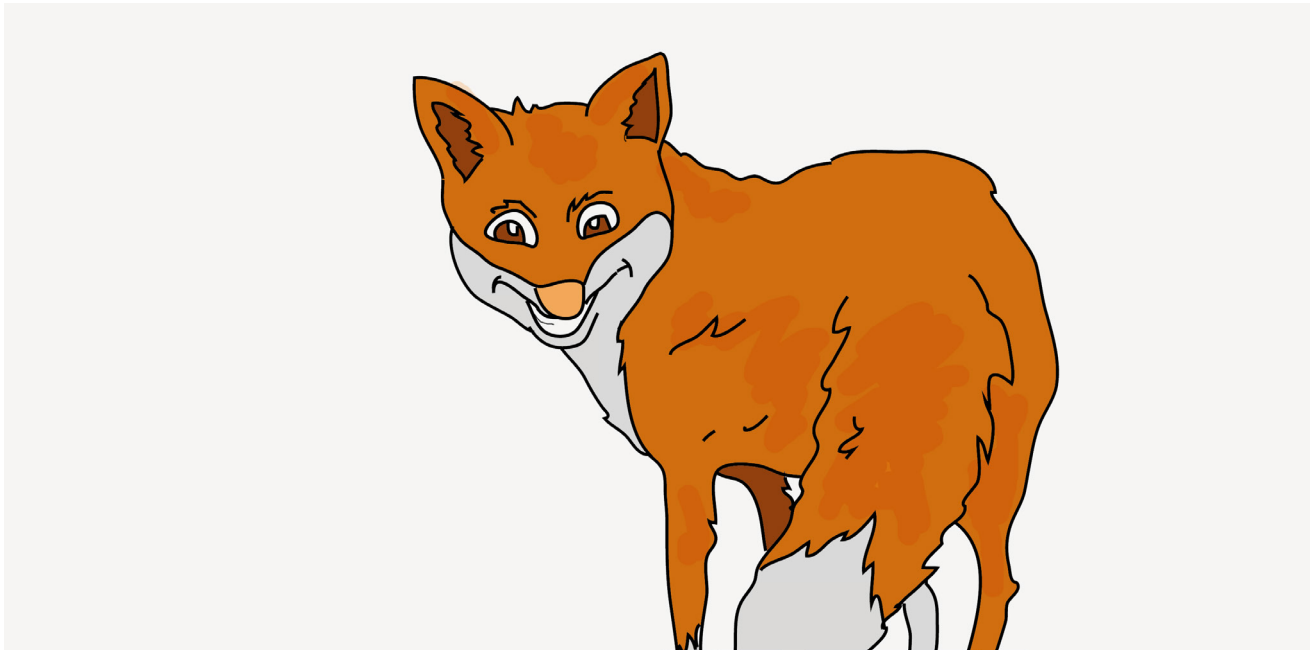
Kwaatu aarweeliwe ni Apwaapu.  
Kwaatu owo khaatthuna olya.  
Mwaana ahimoomola Kwaatu.  
Apwaapu yaahimwaatta selulaari.  
-Rawulu mumuhiye Kwaatu aka.  
Rawulu aahimuhiya Kwaatu ole.



- ① Exeeni jaarweeliwe ni apwaapu?
- ② Yaamwaattela exeeni selulaari?
- ③ Rawulu aahiwiiwelela Apwaapu awe?



# khw Khw



Khwa tte

E khwe yi

E khwa li

E ta khwa



Ekhweyi

Khwatte

Ekhwali

Etakhwa



Ekhweyi, Ekhwali ni Khwatte inama.

Awo axinama anikhala mutakhwani.



## Etakhwa

Mutakhwani waatta inama sowoopiha.  
Khwatte onikhala mutakhwani.  
Naaviraka nivekeleke ohooliwa.  
Atokweene a elapo waasivela ekhweyi.  
Atthu akhalihane woomolela yeeyo.



- 1 Inama xeeni sinikhala mutakhwani?
- 2 Khwatte onikhala woowi?
- 3 Exeeni enaasivela atokweene a elapo?



- 1 Onaaweha atthu akavi?
- 2 Anamwane anipaka exeeni?
- 3 Aloliwe ti ani?
- 4 Awo aloliwe aakupali?



## Ekhweyi

Ataata waasivela masipo a ekhweyi.  
Waattamela owaani yookhala ekhweyi.  
Ataata aavekela ni aheemiheriwa.  
Ekhweyi khenilikana ni ekhwali.  
Ekhweyi oratta wiipa.  
Ataata aahokoloxa ekhweyi.



- 1 Exeeni enaasivela wiiwa ataata?
- 2 Ataata anipaka exeeni yaana ekhweyi?
- 3 Ekhweyi eniipa sayi?



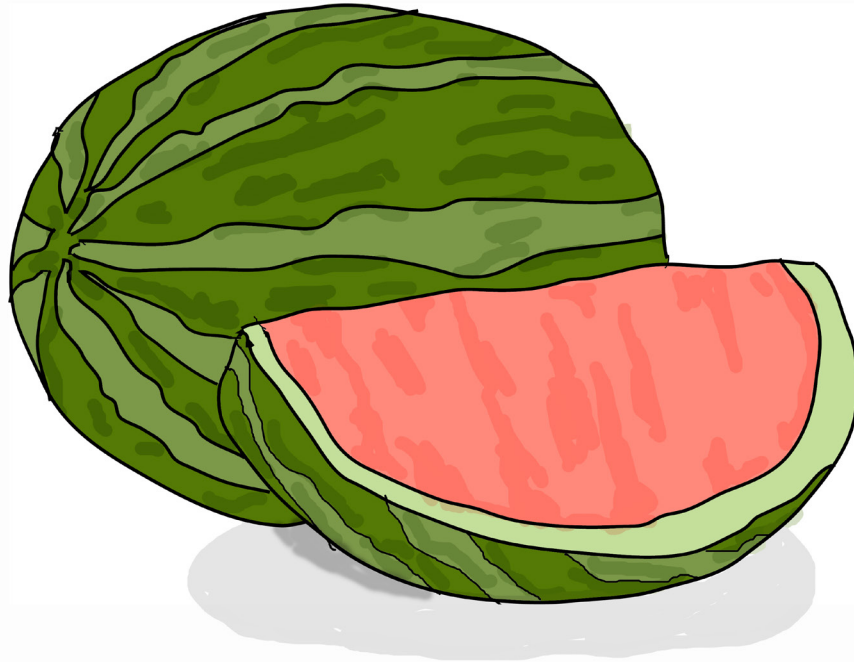


# EXIKOLA





**ry Ry**



ni wu ryo  
o rii rya

o wu rya  
waa rya



ryaarya niwuryo owurya  
oriirya



Apwaapu aarwaana niwuryo.  
Eryawe yoowenyiwa ni tthoro.



## Nihiku na oxikola

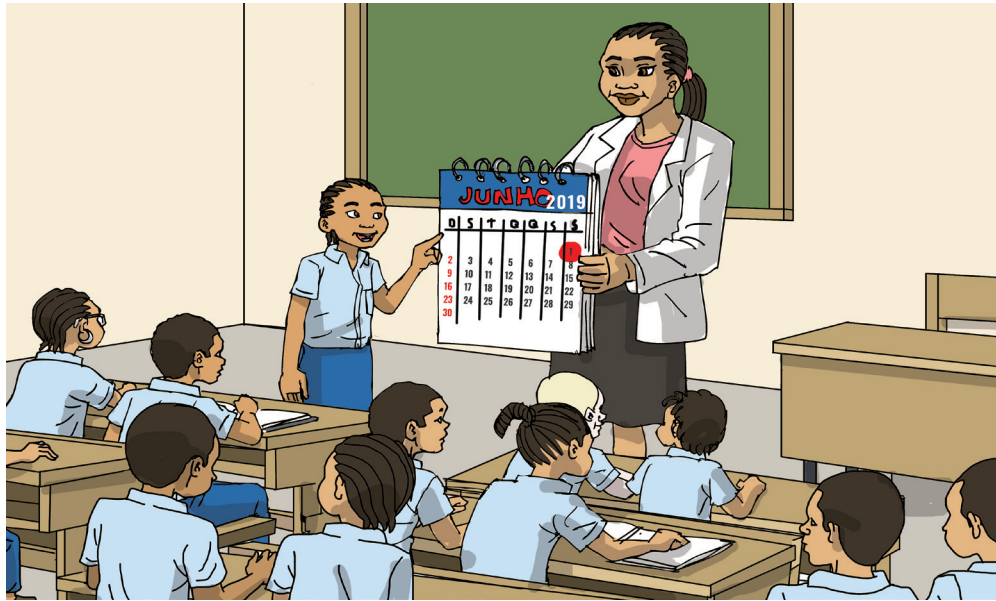
Namathanu nihiku tho na oxikola.  
Mweeri ootuphela exikola enaarya.  
Axipaapa awe anihala atthupulaka.  
Owo onixutta okhwararya malepo.  
Amumulaka osoma onilya niwuryo.



- 1 Amweeri aniira exeeni?
- 2 Okathi woomumula onilya exeeni?
- 3 Axipaapa awe anipaka exeeni?
- 4 Ti ivi miteko sa anamwane?



- 1 Onoona exeeni?
- 2 Ari atthu akavi?
- 3 Aniira exeeni?
- 4 Ari vaavi?



## Nihiku na athiyana

Athiyana a elapo ahu ahaana nihiku naya.  
Nihiku nene nihiku na 7 na Apiriili.  
Nihiku noowaarya ni okhaliherya.  
Athiyana ari ohoolo wa eparaasa.  
Akina ari ahinatthi ophiya oparaasa.  
Ipereetiyu siri ottuli wa athiyana.



- 1 Ti nivi nihiku na athiyana?
- 2 Athiyana ari woowi?
- 3 Ipereetiyu siri vaavi?
- 4 Nyuwo muri vaavi?



**ttw Ttw**



ttwara ottweelela ottwara  
ottwarela muttwarelo



ottweelela ottwara  
ottwarela muttwarelo



Khunireera anamwane ottweelela.  
Awo arapeke wiira ahittweelele.



## Nihiku na mwaana

Nihiku 1 na Xuunyu ti na mwaana.

Mwaana onikhala oohakalala.

- Miyo kineetta woohittweelela.
  - Miyo kinilikana ni ehopa enikata.
  - Kinilikana ni mwaapalame onivava.
- Onivava ttwe... ttwe... ttwe.



- 1 Moolumo ala anileela exeeni?
- 2 Mwaana onikhala sayi?
- 3 Nyuwo muyariwe mweeri xeeni?



- 1 Onoona exeeni?
- 2 Mulopwana onikasooapiha exeeni?
- 3 Anamwane anirowa woowi?
- 4 Nitupheke sayi eparapaara?





## Ihakhi sa anamwane

Anamwane ootheene ahaana ihakhi.  
Awo aniwurya murette.  
Siiso, awo anookhala akumi.  
Myeeri saya asuweleke saana.  
Naphiya nihiku naya ahittweelele.  
Mwaana oohittweelela oreera.



- 1 Moolumo ala anileela exeeni?
- 2 Ti ivi ihakhi sa anamwane?
- 3 Anamwane anikhalana sayi ekumi?

# MAWEHAWEHERYO



khw Khw

ry Ry

ttw Ttw



khwa tte

ni wu ryo

o ttwa ra

e khwa li

o wu rya

o ttwa re la

e khwe yi

o rii rya

o ttwee le la



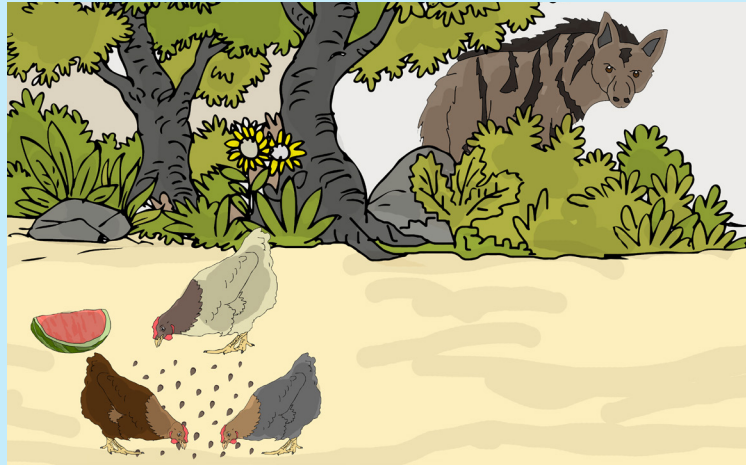
etakhwa

waarya

muttwarelo



Ekhweyi, Ekhwali ni Khwatte axinama.  
Anamwane arapeke wiira  
ahittweelele.



## Khwatte ni ilyakhu

Mweeri ola oluwa akhwatte.

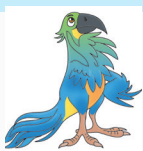
Awo aniluwa mweeri wooriirya.

Waahikhala khwatte woomola ilyakhu.

Iyo saalya niwuryo vatakhwani.

Niwuryo naari nipuro noottweelela.

Niwoomoleke akhwatte muttethe ahu.



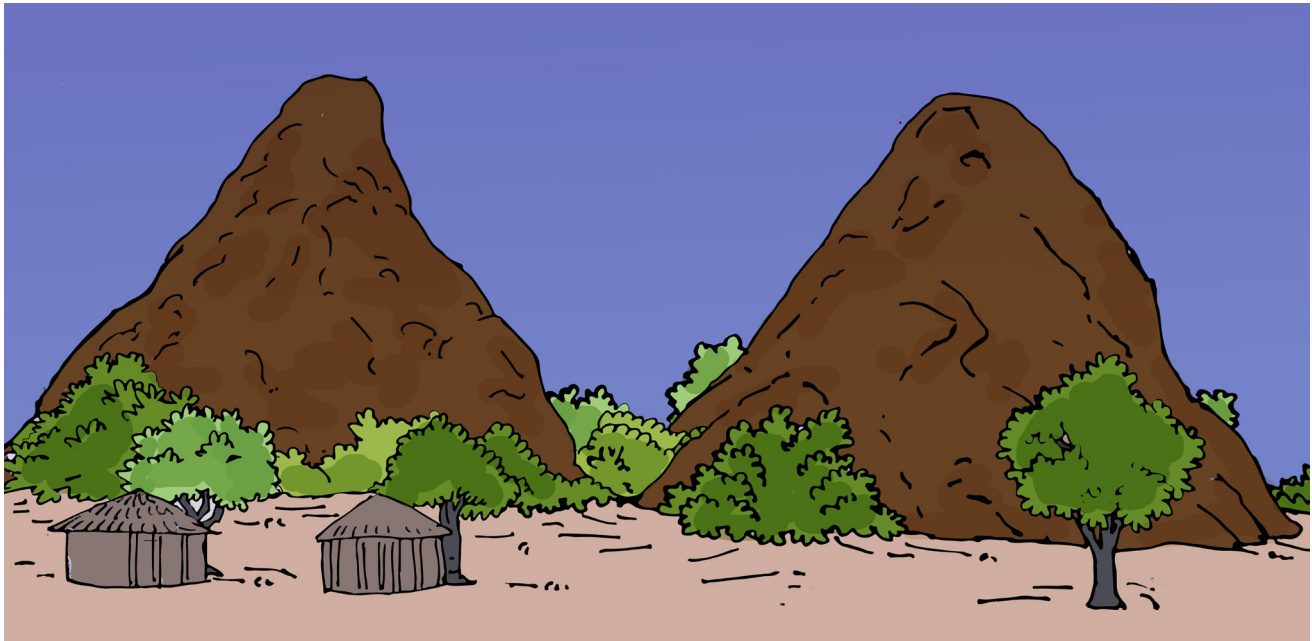
① Khwatte waapaka exeeni?

② Ilyakhu saalya exeeni?

③ Mweeri xeeni aniluwaaya akhwatte?



my My



myaa ko  
mya la

myee ri  
myoo no



myaako

myeeri

myala



Iya va myaako.

Okahiya sookhala myaako.

Myoono sa Nono sinoothoonya.



## Hapipa ni Aputu

Hapipa ni Aputu myeeri iya ari oxikola.  
Awo anisoma ekalaase ya neeli.  
Ephiro ya oxikola waya sookhala myala.  
Awo anivarelana myoono yaaviraka.  
Purusoori ohaaleela owurawura myala.



- 1 Moolumo ala anileela exeeni?
- 2 Ari atthu akavi oovarelana matata?
- 3 Awo anikasooapa exeeni?



- 1 Anaxikola anirowa woowi?
- 2 Awo akapattale exeeni ottuli?
- 3 Murupa oheliwe exeeni?
- 4 Iliivuru iyo sinitekeliwa exeeni?



## Myoopo

Ola muthukumano wa athiyana.  
Amaama anaakhela musurukhu.  
Awo aakithumela myooma.  
Miyo kookhuneela iyo ni myoopo.  
Myooma osiva.



- 1 Eri exeeni wa Rapiya?
- 2 Rapiya aathumeliwe exeeni?
- 3 Owo aakhuneela ni exeeni?
- 4 Myooma exeeni?



# phw Phw



E phwee sa                      O ta phwe la  
O phwa ne li wa                O phwee ya



Phwanela phwaneliwa  
Ophwaneliwa Otaphwela  
Ephweesa Ophweeya



Amina ori oxikola.  
Olelo oophwaneliwa.  
Naxikola ohitaphwele musaala.





## Osoma oreera

Hapipa ni Aputu ari oxikola.  
Awo khonaaphweela osoma.  
Anisoma ekalaase ya neeli.  
Oxikola anirowa oophwaneliwa.  
Yasoma anoophwanya musuwelo.



- 1 Moolumo ala anileela exeeni?
- 2 Arianaxikola akavi musaala?
- 3 Aneetta ekalaase xeeni?



- 1 Valataratoni va enooneya exeeni?
- 2 Anamwane awo ari vayi?
- 3 Aniira exeeni anamwane awo?



## Ikano sa apurusoori

Naxikola eetteke oophwaneliwa.

Owo akhala musaala ohiye otaphwela.

Naxikola ohaana olemeliha ni okhaliherya.

Ohaana omuttittimiha wahala a ephattu.

Alemeliha onophwanya mukhaliheryo.



- 1 Moolumo ala anileela exeeni?
- 2 Naxikola eetteke sayi?
- 3 Yooreerexa ottittimiha exeeni?



py Py



e pyo o the pya waa pya



epyo mwaapyaano  
muthepyano epyoopyo



Eyo epyo ya apiipi.  
Othepyana etthu yoonanara.  
Nihithepyane.



## Muhuru

Xaapewe namaxaya.

Nihiku nimosa aahipaha muhuru.

Inama sa mutakhwani saahitthimaka.

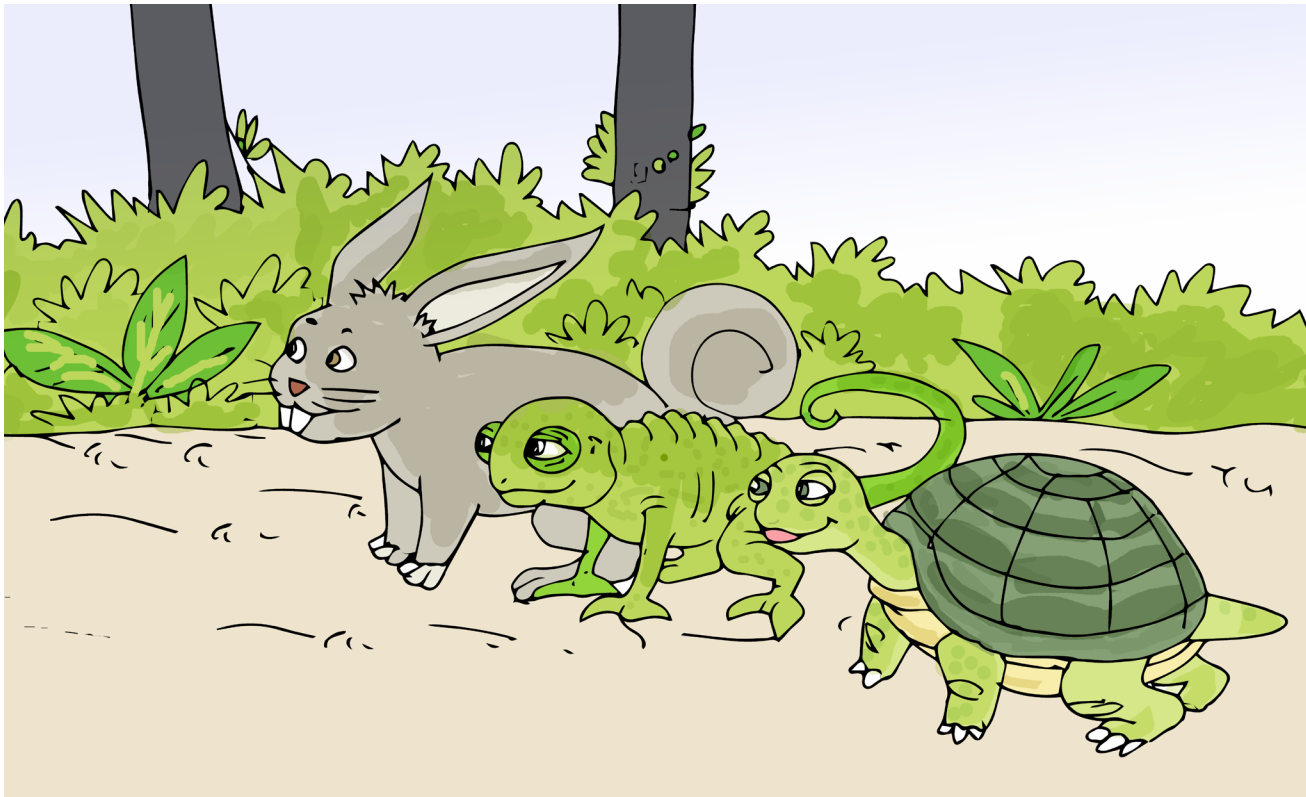
Inama sa owaani siira silyaaka ipyo.

Ipyo iyo saari mumwaapuni.

Ti vo namaxaya aahihiya opaha muhuru.



- 1 Ti ani aapaha muhuru?
- 2 Inama sa mutakhwani saapakani?
- 3 Xaapewe aahihiya opaha muhuru?
- 4 Exeeni eniireya napaha muhuru?



- 1 Onoona exeeni veelataratoni va?
- 2 Mwaha ola aakumihale ti pani?
- 3 Exeeni enirowa okhumelela?



## Namarokolo ni epyo

Khalayi namarokolo aakhala ni atthu.  
Atthu awo yaanaala ipyo.  
Namarokolo ari namathepya.  
Owo aanikhuura ipyo sootheene.  
Yoowo ahiphwanyiwa okhuuraka epyo.  
Aahoomoliwa othamela mutakhwani.



- 1 Namarokolo aakhala ni ani khalayi?
- 2 Atthu yaala exeeni?
- 3 Exeni onikhalaawe mutakhwani?

# MAWEHAWEHERYO



my

My

phw

Phw

py

Py



Myaa ko

E phwee sa

Mwaa pyaa no

Myee ri

O ta phwe la

Mu the pya no

Mya la

O phwa ne li wa

E pyoo pyo



myoono

epyo

ophwanya

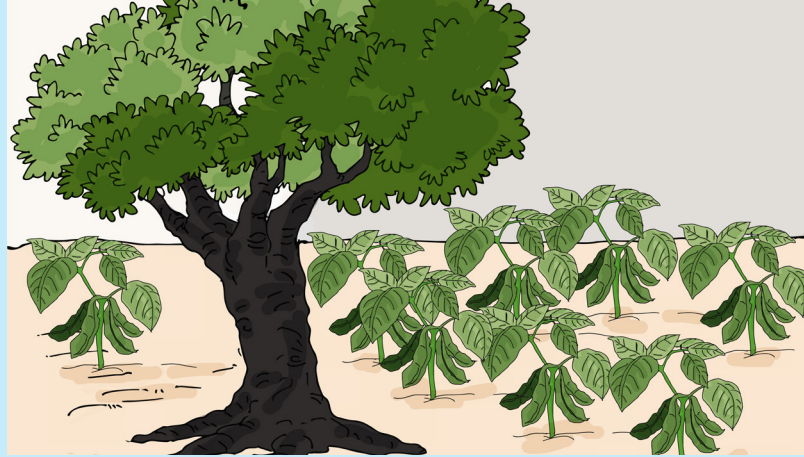


Okahiya sookhala myaako.

Kapiitu omusivela othepyana.

Amina aarowaka oxikola ophwaneliwa.





## Epyo

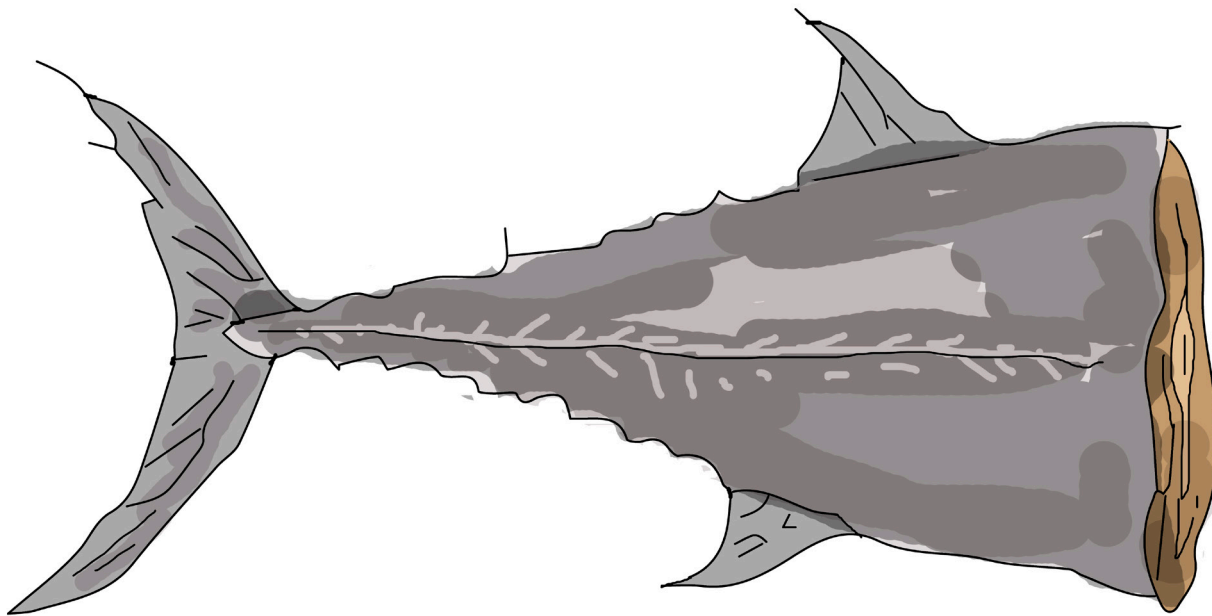
Apwaapu anilima mapuro siri myala.  
Noophiya okathi yaahirowa waala epyo.  
Anaxikola ahaana waala ipyo oxikola.  
Masi ahaale ipyo vathi va pwaaphwa.  
Mwaakha ole apwaapu khiyaarina etthu.  
-Nivahane mapuro ooreera olima.



- 1 Exeeni ekhalale omatta wa apwaapu?
- 2 Yaalale exeeni okathi noophiya?
- 3 Anaxikola yaaleke exeeni oxikola?



# thw Thw



E thwi                      O thwee la  
O thwee le la      O thwee la ka



Thweela    Thweelaka Ethwi  
Othweela Othweelaka Othweelela



Hapipa ni Ema anirowa oxikola.  
Yaarowaka oxikola khanithweelela.  
Owaani waasivela othweela.  
Waasivela tho okhuura ethwi.



## Osoma ni wiipa

Kiki oosuwela ihakhi sa anamwane.  
Owo omusivela othweela ni osoma.  
Oxikola ooxutta malepa a ekanyero.  
Yoowo onithweela ni sa varoohoni.  
Nihaana wiipa malepa awo nithweelaka.



- 1 Moolumo ala anileela exeeni?
- 2 Exeeni enimusivela Kiki?
- 3 Ohimye malepa a ekanyero ahu.



- 1 Onoona malepa xeeni vakamisani?
- 2 Ohimye malepa makina.
- 3 onisuwelaawe.
- 4 Ti avi malepa oowoosivela?



## Okathi wa isepwere

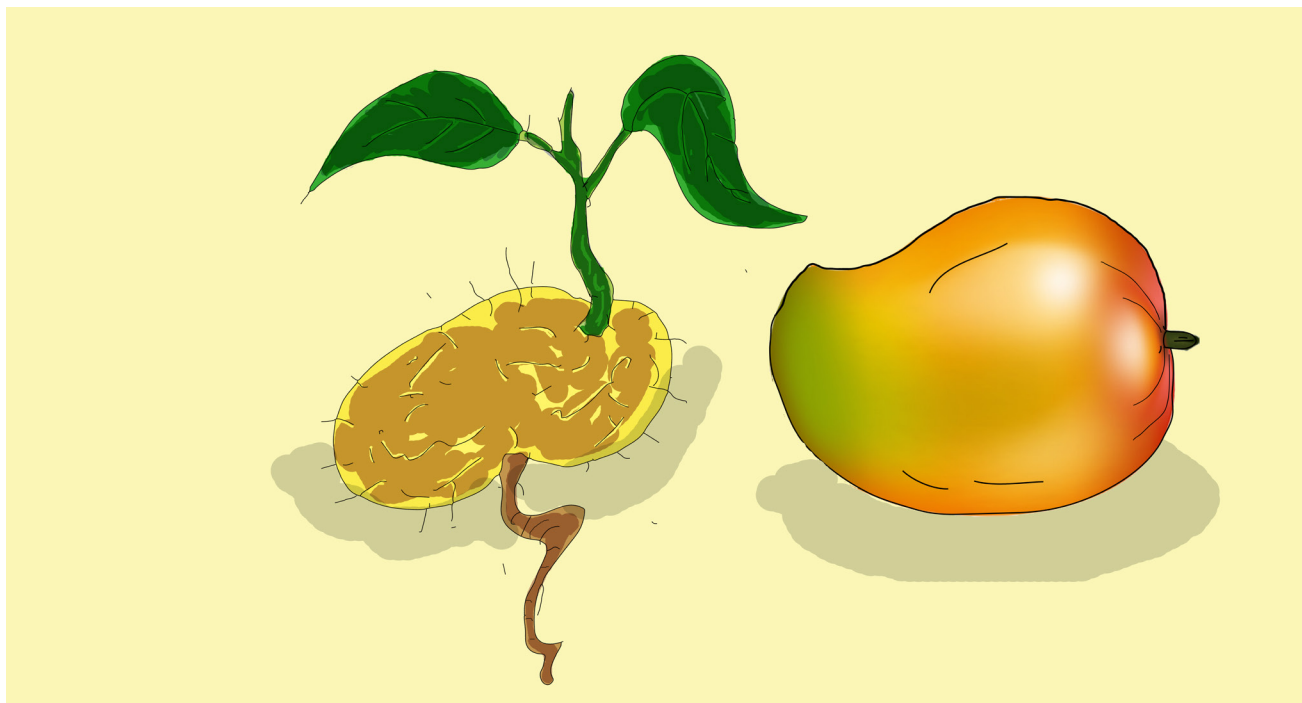
Oxikola sinipakiwa isepwere soolela.  
Anaxikola anipaka isepwere athweelaka.  
Rapiya ni Ruuyi anithweela vamosa.  
Awo animutupha musoope.  
Ala makhalelo saana oothweela.



- 1 Isepwere xeeni sinipakiwa oxikola?
- 2 Iyo sinixuttiha exeeni?
- 3 Ohimye isepwere sikina.



sy Sy



e syo mu sya ki o sya ka



Syoola syaka osyoola osyaka  
esyoo Musyaki Musyakiha



Xaapewe musyaki.  
Owo onnisyaka maasi.  
Maasi a ophareya woopiha.



## Musyakiha

Musyakiha namalima muulupale.  
Owo ohaala miri sa mihokhorokho.  
Amusi animulimela nakhuwo ni meelee.  
Awo anisyakiha osya soolima saya.  
Nihaana nisyakaka osya.  
Naaxuttihe atthu wiira ahipahe miri.



- 1 Musyakiha ti pani?
- 2 Amusi awe aniira exeeni?
- 3 Ti sivi miri sa mihokhorokho?
- 4 Etthu yooreera opaha etakhwa?



- 1 Onoona exeeni veelataratoni va?
- 2 Anamwane ala ari vaavi?
- 3 Anileeliwa exeeni anamwane ala?





## Miri

Miri sinivaha soolya.

Musyakiha ookhalana miri soowiima.

Owo orina munika ni aatha.

Miri iyo isya ni sinivaha isyo.

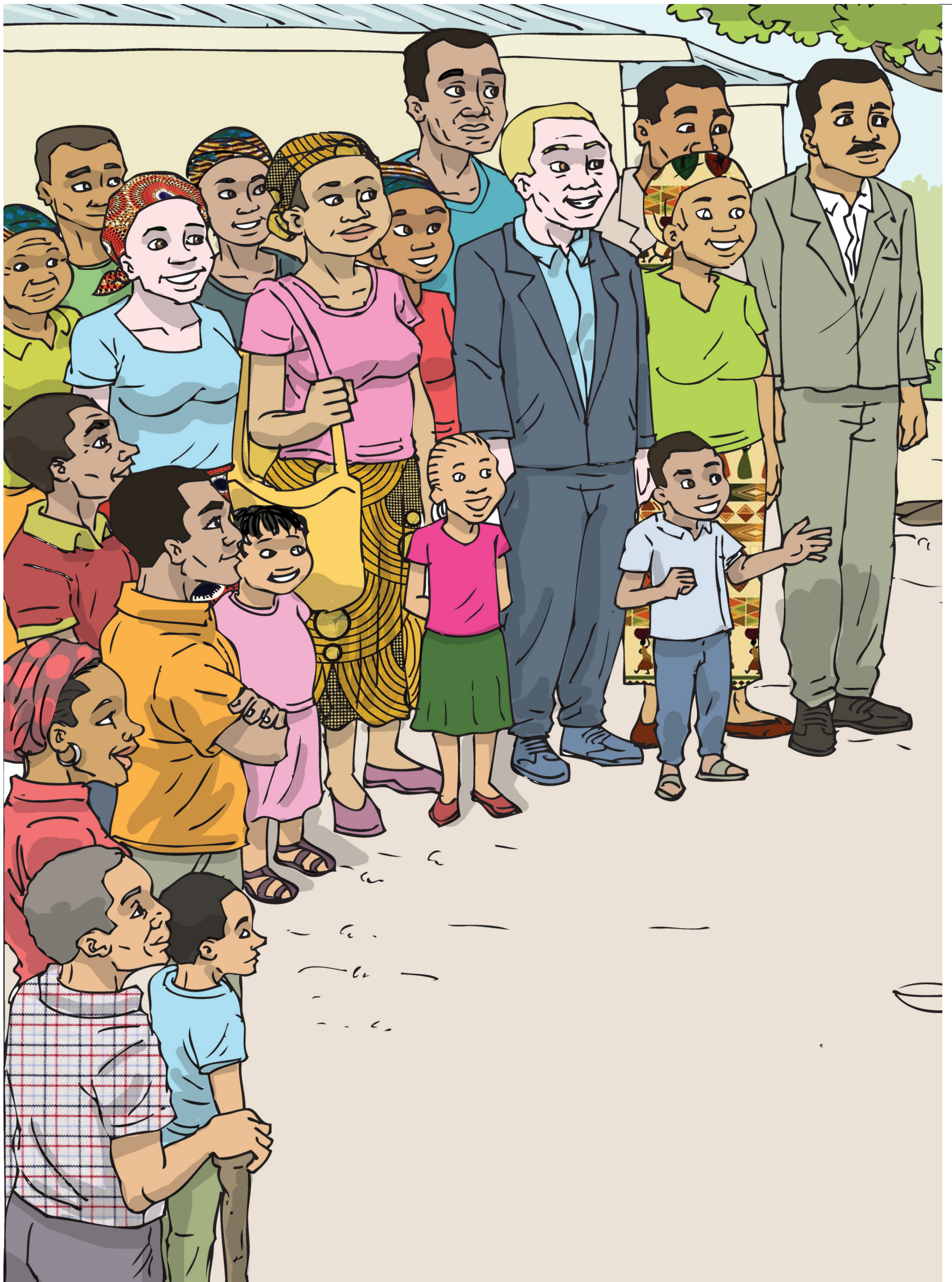
Miri isya oreeriha elapo.



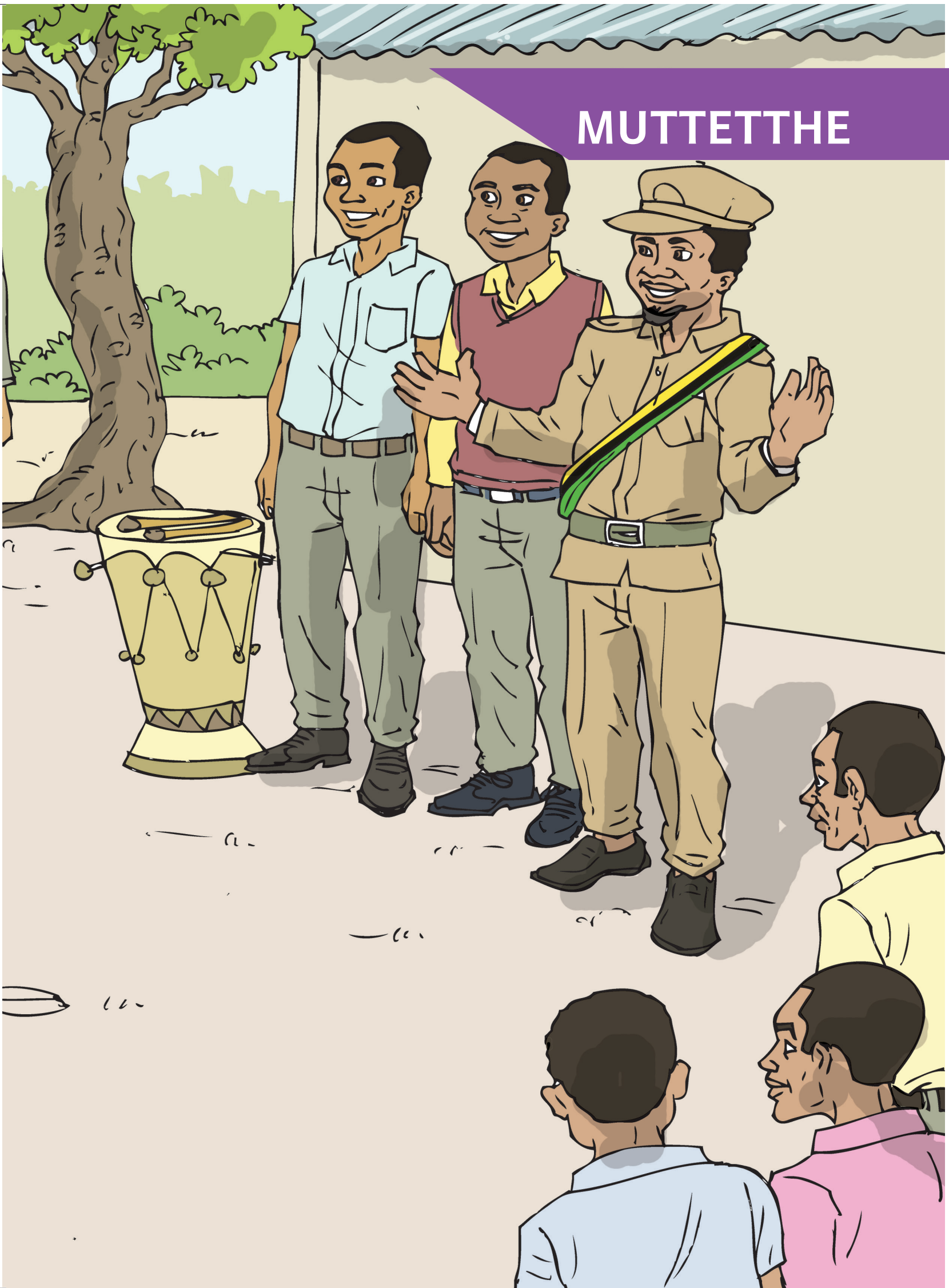
① Musyakiha orina miri xeeni?

② Sinivaha exeeni miri sa Musyakiha?

③ Nuuheke miri siri mulaponi?



# MUTTETTTE





tw Tw



Twaa ha Twaa hi ri i twaa thwa



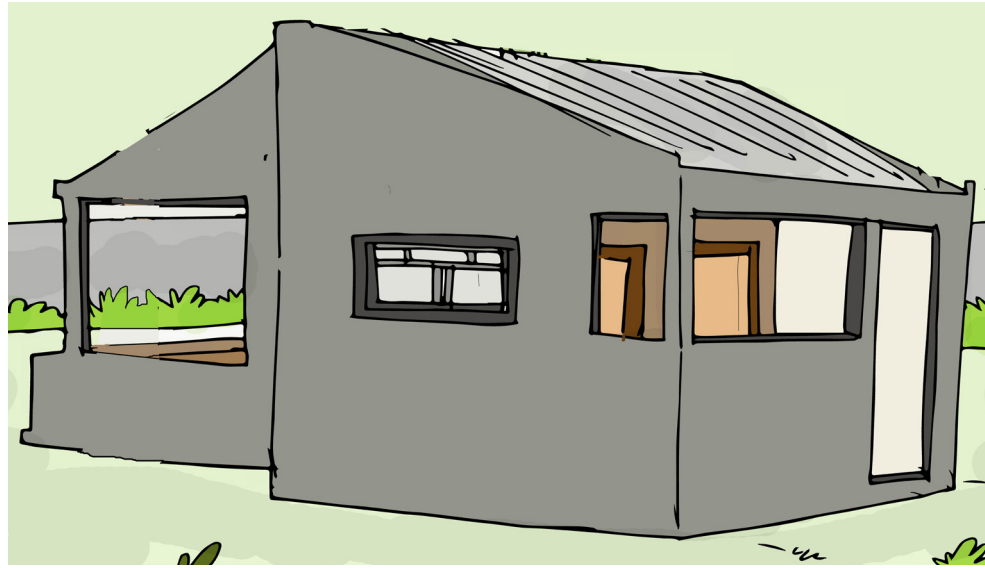
Twaaha Twaahiri itwaathwa



Ola Twaaha.

Owo onirowa omettha ikharari.

Ole mwaapara awe Twaahiri.



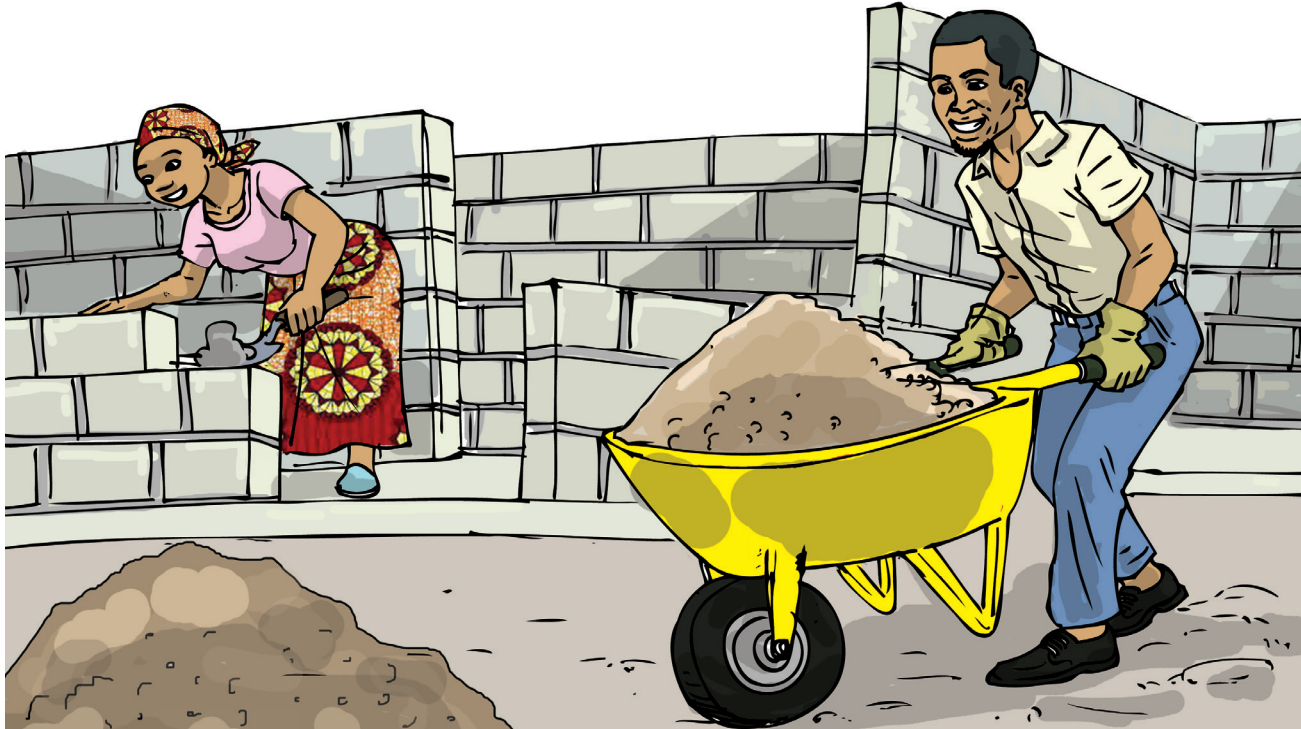
## Enupa ya Twaaha

Twaaha ookhalana enupa yooreera.  
Owo onikhala ni Twahiri.  
Twahiri makiniixita ni Twaaha piloto.  
Awo apatthani anikhalihana vooreera.  
Awo anikhalihana miteko sa vate.

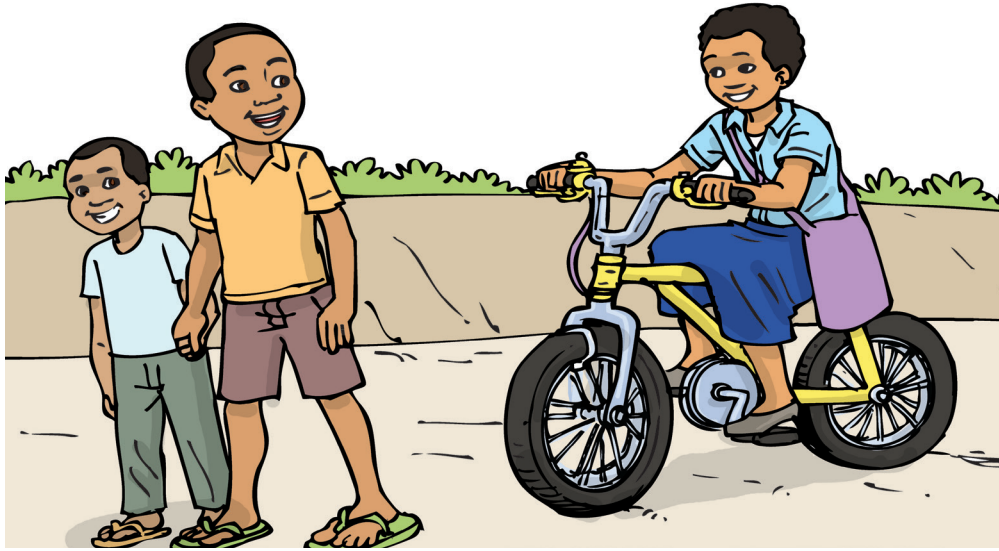


- 1 Ti yoowiira sayi enupa ya Twaaha?
- 2 Onikhala ni pani Twaaha?
- 3 Ti ovi miteko awe Twahiri?
- 4 Ti ivi miteko sookhalihana?

## Esumana 21



- 1 Ti ani aniteka enupa?
- 2 Ti ani anixova ekarinya?
- 3 Ari atthu akavi?
- 4 Moota xeeni wa enupa enitekiwa?



## Twaayifa ni akhwaawe

Twaayifa ni akhwaawe anirowasa oxikola.  
Oxikola onilavuliwa nihiku 1 na Xuunyu.  
Nihiku na anamwane mulaponi.  
Twaayifa ni akhwaawe anootthapa oxikola.  
Anoolya, wiipa ni wiina oohakalala.



- 1 Ti ani anirowa oxikola?
- 2 Exeeni enilavuliwa oxikola?
- 3 Ti nivi nihiku na anamwane?

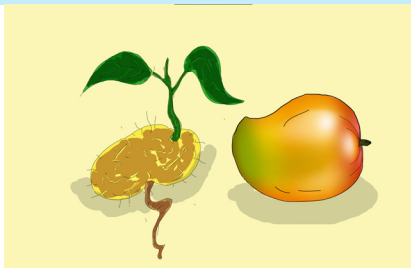
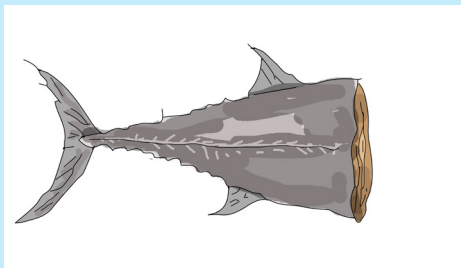
# MAWEHAWEHERYO



thw Thw

sy Sy

tw Tw



Twaa ha

O thwee la

E syo

Twaa hi ri

O thwee le la

Mu sya ki

E twaa thwa

A thwee la ka

Mu sya ki ha



Othweelana Syakasyaka Twahiri



Awo aniipa masipo athweelaka.

Owo onisyaka maasi.

Ole mwaapara awe Twahiri.





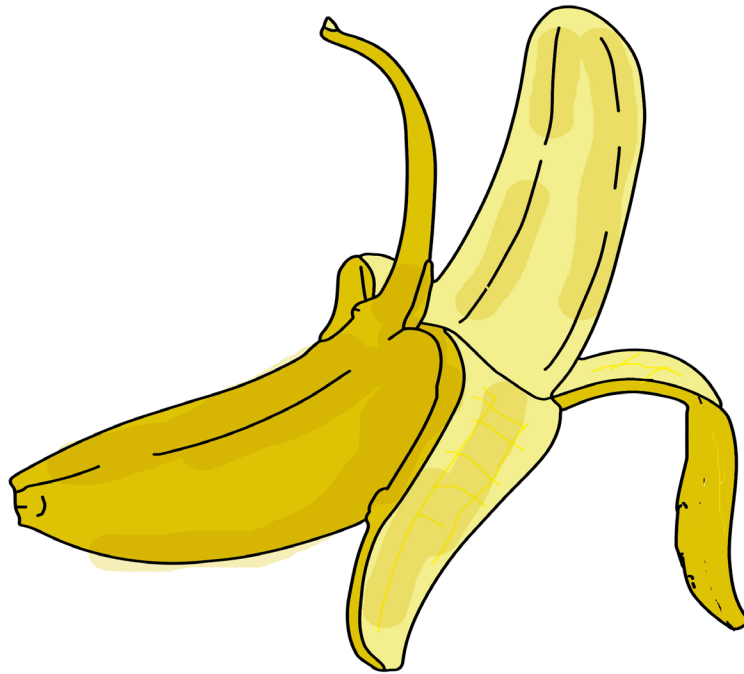
**Othweela ni osyaka itwaathwa**  
Nikhapelele erutthu ahu.  
Anamwane ahaana ehakhi ya othweela.  
Ahaana othweela wiira asyake iretta.  
Muthweelelo wa aana weetta isepwere.  
Awo anipacerya olya anarowa othweela.



- 1 Exeeni vanireeraaya anamwane othweela?
- 2 Awo anithweela vaavi?
- 3 Anamwane anithweela anikhala sayi?



# tthw Tthw



Yoo wii tthwa o tthwe la  
Tthwa yi o tthwe la na



Tthwayi tthwela wiitthwa  
Yoowiitthwa otthwela  
otthwelana



Ola mwaana.  
Owo ootthweliwa.  
Ale ti apaapa awe.



## Enika yoottokottha

Akhuulu arowale omatta wa enika.  
Awo arowale orukula enika yoowiitthwa.  
Enika yoowiitthwa onaya.  
Eyo yaahiitthwe enikhalana esenya.  
Aakhala moota oowaatta oolya enika.  
Enika ekithi naapeyeke khiyalya.



- 1 Moolumo ala anilavula exeeni?
- 2 Akhuulu arowelale exeeni omatta?
- 3 Ti yoowiira sayi enika enirukuliwa?
- 4 Moota xeeni onilyiwa enika eri mumutthakani?



- 1 Onoona exeeni veelataratoni va?
- 2 Naakhaliherye sayi atokweene?
- 3 Kapitu ni atokweene aneetta vaavi?



## Xunita

Olelo koomoona Xunita.

Owo oyariwe nihiku na 25 na Xuunyu.

Otthweliwe Xunita.

Apaapa awe ti amutthwelale.

Ti vooreera otthwela masina siisa.

Xunita ti ooreeriwa ni ti oohakalala.



- 1 Ti pani oyariwe nihiku na 25 na Xuunyu?
- 2 Otthweliwe ni apani?
- 3 Ori sayi Xunita?



vy Vy



mu vi vyaa la o vi vyaa la  
o vyaa ovya vyaa sa



Vyavyasa ovivyaala  
muvivyaala ovya



Musyake ovya.  
Owo onisyaka ovya.



## Ekalawa

Ekalawa enetta muphareya.  
Ekalawa ehikhaleke yoovivyaala.  
Naavyeke wiikasoopa mukalawani.  
Nawela ekalawa nihinaavya etthu ekina.  
Hata erutthu ahū nikasoopeke.  
Siiso niikhuneeleke wiira nihivye ni  
elimwe.



- 1 Ekalawa enivira vaavi?
- 2 Nikhaleke sayi mukalawani?
- 3 Okathi xeeni wooviha?



- 1 Onoona exeeni veelataratoni va?
- 2 Anamwane ala anipaka exeeni?
- 3 Niirekeni naamutuphaka xipooro?





## Mooneo ooweetta

Puliisiya onisuweliha meettelo.

Niwehawehe ephiro naavyaka otupha.

Noomoleke inama muparapaarani.

Sihivye miri sa muparapaara muwehaka.

Iyo savya khaninirowa omumula saana.

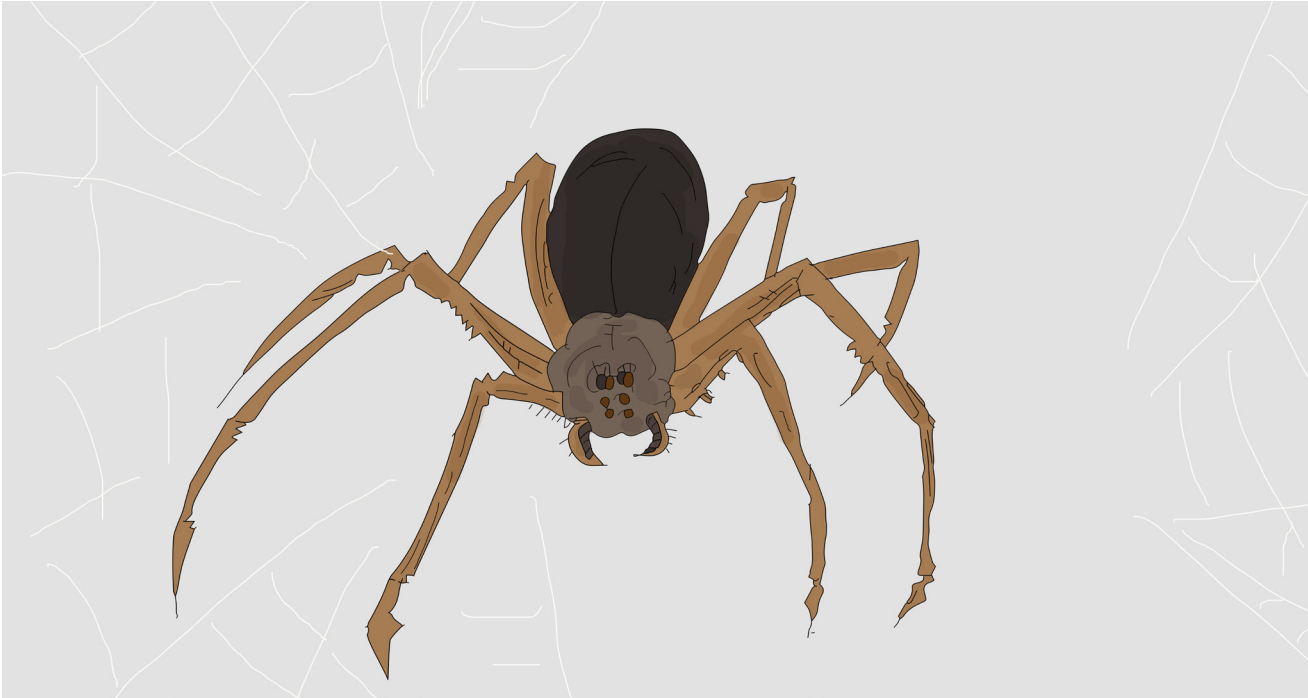
Puliisiya ti onaakiha ihasara muparapaara.



- 1 Puliisiya onisuweliha exeeni?
- 2 Naavyaka otupha ephiro niireke
- 3 exeeni?
- 4 Niirihekeni inama muparapaara?
- 5 Puliisiya mwaakiho a exeeni?



**SW Sw**



Ni swii swi o swaa mi ha  
o swaa mi ha na Swaa li hii na



Swaati Niswiiswi oswaamiha  
oswaamihana Swaalihiina



Ola Swaalihiina.  
Swaalihiina omusivela oswaamiha.  
Twaaha ohoona niswiiswi.



## Okhapelelana

Swaalihiina ni Swaati apatthani.

Yatthekelana anoovaanela. Oswaamiha etthu yooreera mulaponi.

Awo anirowasa vamosa oxikola.

Yaarowasaka animutupha xipooro.

Muxipooroni anikhalana epaasoopa.



- 1 Ti ani Swaalihiina ni Swaati?
- 2 Awo anipaka exeeni yatthekelana?
- 3 Anituphani yaarowaka oxikola?
- 4 Animutupha sayi xipooro?



- 1 Onoona exeeni valataratoni va?
- 2 Atthu ala anoolikana?
- 3 Mukukutta xeeni onirwa?
- 4 Mwaamulopwana ori vo oniirani?



## Swaati

Nihiku nimosa Swaati aarowa oxikola.

Owo eetta moonoo woolopwana.

Moonoo awe woothiyana saavira mikukutta.

Swaati weetta moonoo awe.

Swaati onooniherya mootaa wooweetta.



- 1 Ti pani aarowa oxikola?
- 2 Eetta moonoo xeeni Swaati?
- 3 Swaati onixuttiha exeeni?

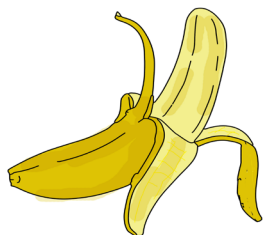
# MAWEHAWEHERYO



tthw Tthw

vy Vy

sw Sw



O tthwe la

Swaa li hi na

O vya lu wa

O swaa mi ha

O tthwe la na

O vya vya sa

Tthwa yi

Ni swii swi

Mu vi vya la



otthwelana ovy oswaamihana



Mwaana ootthweliwa.

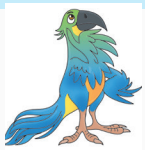
Owo onisyaka ovy.

Swaalihiina omusivela oswaamiha.



## Paasoopa ikwerere

Nihaana okhapelela erutthu ahu.  
Ikwerere sithweliwe masina oovirikana.  
Yookhala ekwerere yoovyaluwa.  
Ikina siniswina muparapaarani.  
Nirapihe soolya sinirwaana ikwerere.  
Nihaana wiikasooopa saaneene neettaka.



- ① Ti vooreera okhapelela erutthu ahu?
- ② Siri iretta kavi va moolumo?
- ③ Niireke exeeni nihinatthi olya?



# tthy Tthy



I tthya ka                      o tthya wa  
e tthyaa ko                      i tthyuu wi

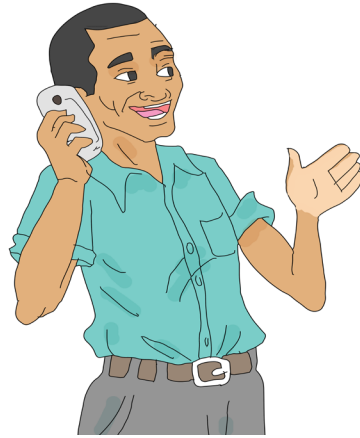


tthyawa Itthyaka otthyawa  
etthyaako



Itthyaka sa marapo sinipakiwa ekathe.  
Twaaha owerya otthyawa.  
Enowa yuupeeriwa ni itthyuuwi.





## Selulaari

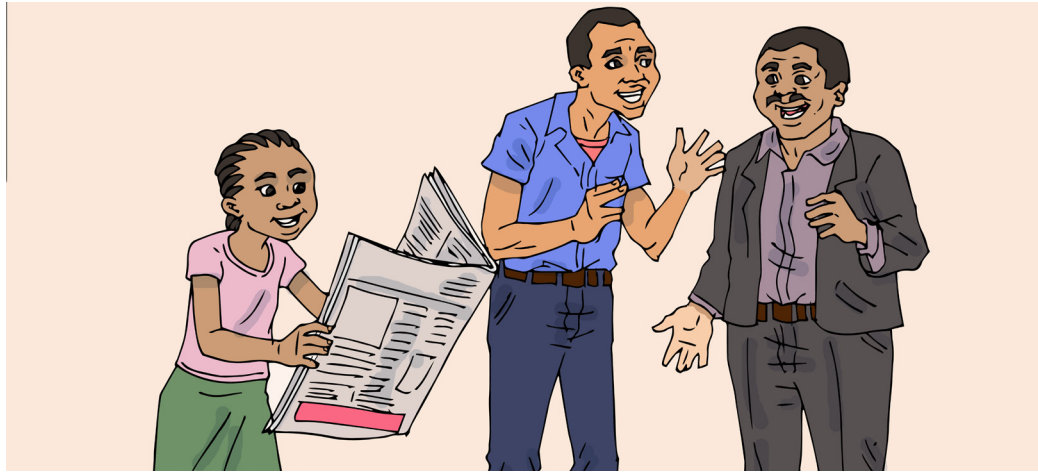
Swaalehe etthyaako ya amaama.  
Owo omusivela olavula ni selulaari.  
Selulaari aruma onirowa otthyawaka.  
Nihiku nimosā selulaari aahimora.  
Aahuupiwa ni itthyyuwi saalya itthyaka.  
Swaalehe aahimuttotta omutatha.



- 1 Exeeni enimusivela Swaalehe?
- 2 Swaalehe oniirani selulaari aruma?
- 3 Saalyani itthyyuwi?
- 4 Swaalehe aamutathelani selulaari?



- 1 Onoona exeeni veelataratoni va?
- 2 Amusi ala anoona exeeni?
- 3 Ohimye muteko aya etelevisoori.



## Ehapari ya elapo

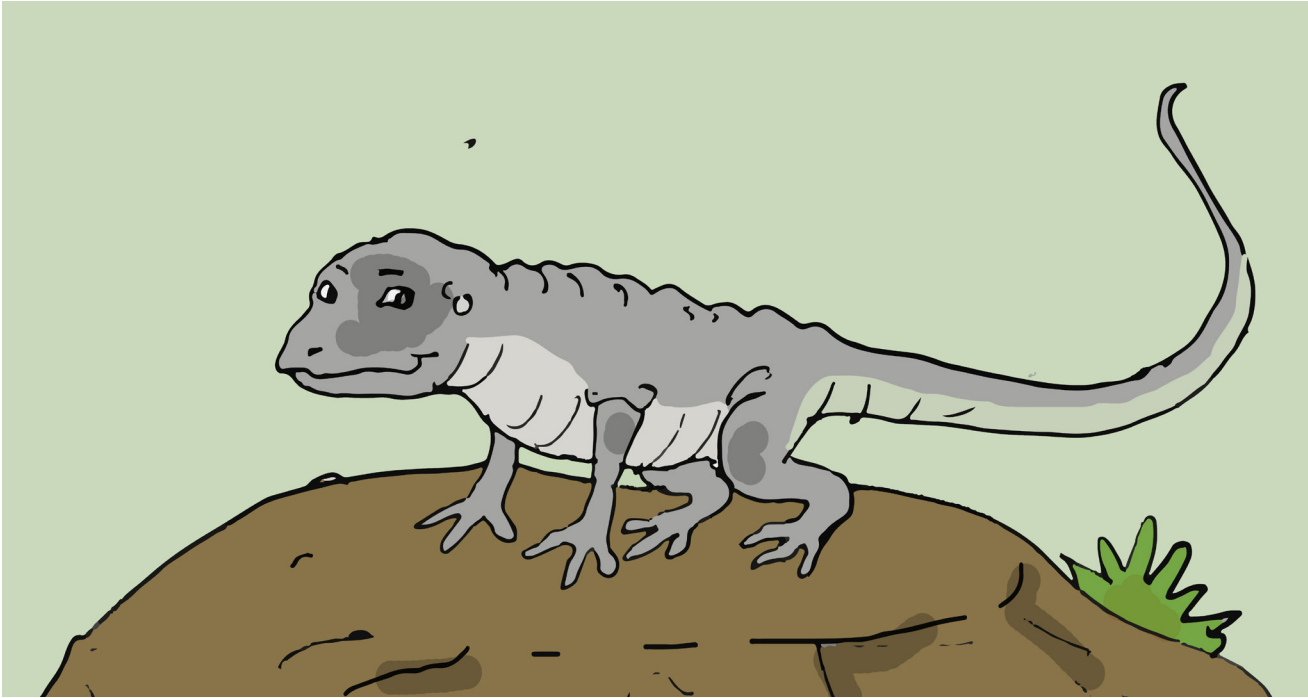
Miyo koomulattula Liina osoma.  
Owo aahirwa otthyawaka.  
Orwaaka aahimoona mutthyeku.  
Nihiku naya naari na etthyapwe.  
Hiyo naahiiwanana osoma exoronaale.  
Ehapari yaahimya oreeriwa wa itthyaako.



- 1 Ti ani aalattuliwe osoma?
- 2 Aarwiiye sayi Liina?
- 3 Owo oonale exeeni orwaaka?



n' N'



n' we ne ne      n' wa na ni  
a n' we ne ne      n' woo ro tha



n'wenene    n'wanani    an'wenene



N'wenene owerya otthyawa.  
Ixuwaari sinaaliwa n'woorotha.  
Kwaatu n'wanani a nikhule.

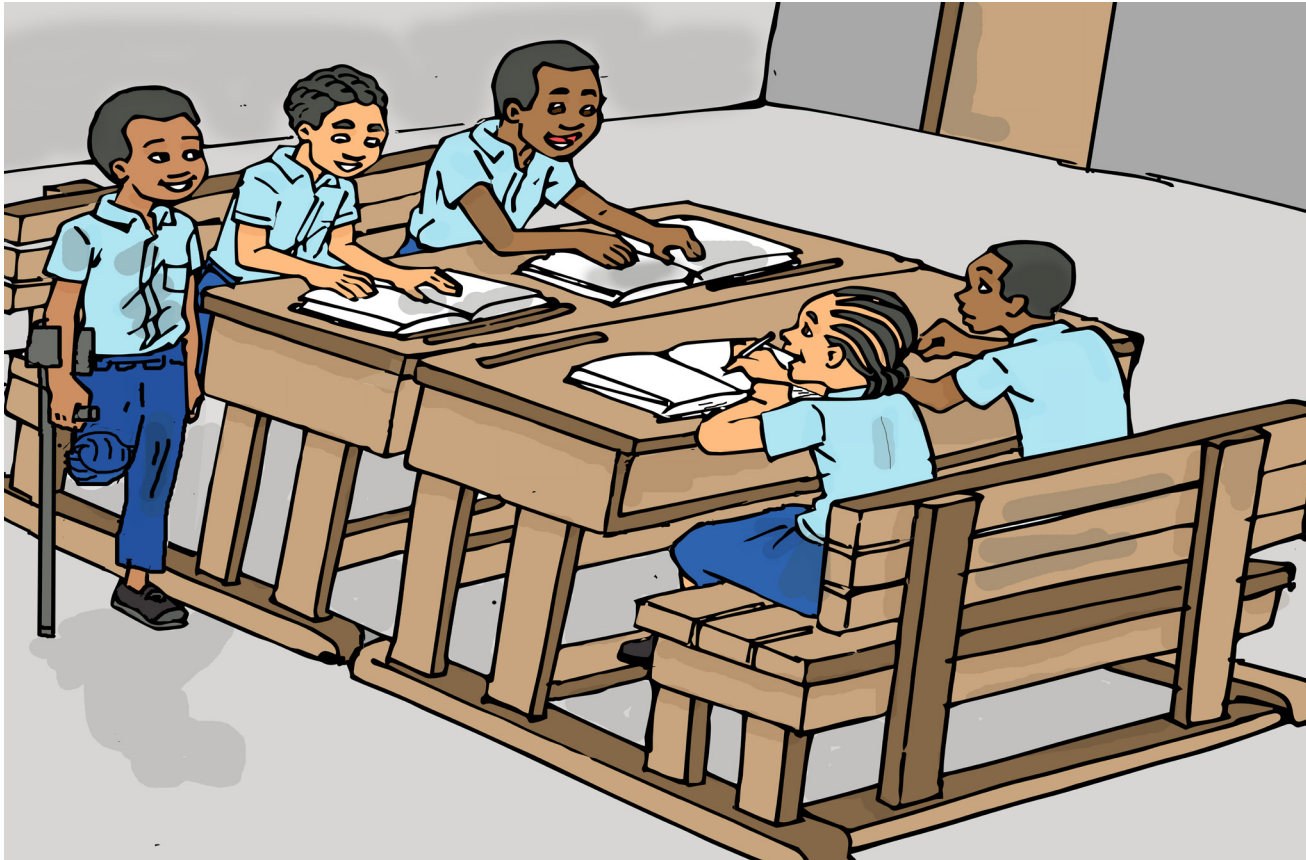


## Nsoope

Olelo nihiku na orowa wiipa oxikola.  
Mariya oron'we ni ekuwo esya.  
Owo aahin'weha Ali orowaka wiipa.  
Ali aaron'we wiipa masipo oolela.  
Mariya aaron'we wiina nsoope.



- 1 Nihiku na xeeni olelo?
- 2 Oron'we sayi Mariya oxikola?
- 3 Oron'we wiira exeeni?
- 4 Ali iipa exeeni?



- 1 Oniira exeeni naxikola ooweemela?
- 2 Nyun'wo mookhalana sa varoohoni?
- 3 Sinihimya exeeni sa varoohoni sanyu?



## Esimano

Amiravo yaamuthweela.

Awo yaamamana moota wa n'worokolo.

Xiiku iira rwe, Miiru aari n'wenene.

Xiiku amala wiira rwe, aamwiipitha.

Miiru aari n'wenene, an'wela.

Siiso, amiravo yaanithweela.



- 1 Ari amiravo akavi?
- 2 Ohimye masina a amiravo ala?
- 3 Aniira exeeni amiravo awo?



m' M'



m' wa ra khu lo      m' weele  
m' waa ka              m' wa ka

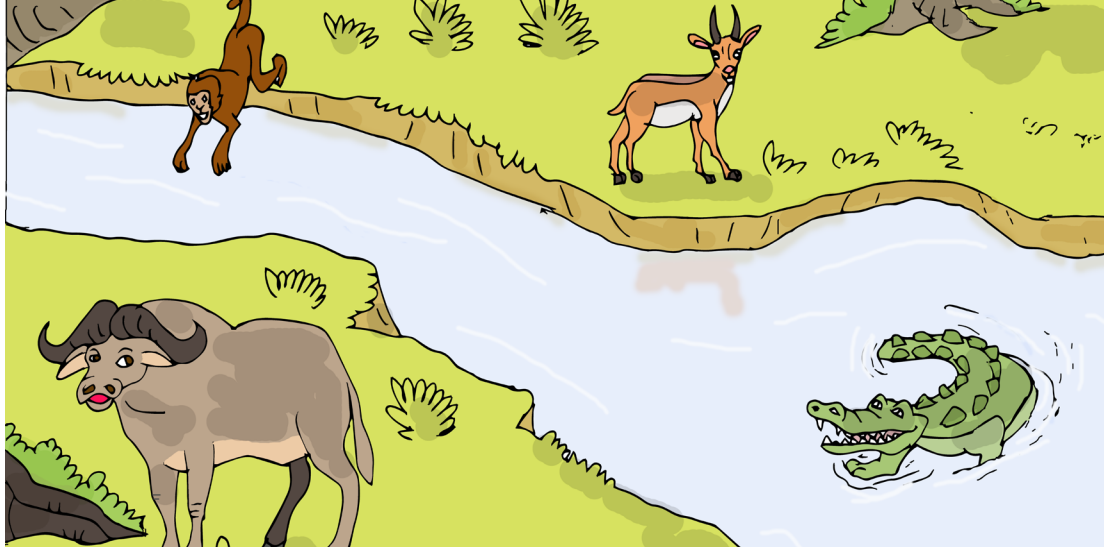


m'warakhulo      m'we      m'waaka



Mmiravo, m'we va.  
Nyuwo m'waaka, miyo kaamurapa.  
Moonika, m'wenye nikhaka.





## Ekonya ni kootto

Ekonya yam'weha kootto.  
Kootto aaweha ephalavi.  
Ephalavi yaatthyawa m'warakhulo.  
M'warakhulo owo waari wa a ekonya.  
Ekonya owerya oluma.  
Nasoro am'weha sootheene siiraneya.



- 1 Siri inama kavi?
- 2 Ekonya yam'weha mwaamunama xeeni?
- 3 Enama xeeni yaaweeha siiraneya?



- 1 Mulopwana oniira exeeni?
- 2 Exeeni eri munikholwani?
- 3 Muhimye inama sa muttethe anyu?



## Mapawe a inama

Mapawe a inama ikanyero.

Awo anooniherya inama.

M'we m'wehe mapawe a inama.

Mikukutta sim'wa vakhaani vakhaani.

Noomoleke inama muparapaara.



- 1 Mapawe a inama anooniha exeeni?
- 2 Awo anikhala vaavi?
- 3 Anakaaro aneetta sayi yaweha nipawe?

# MAWEHAWEHERYO



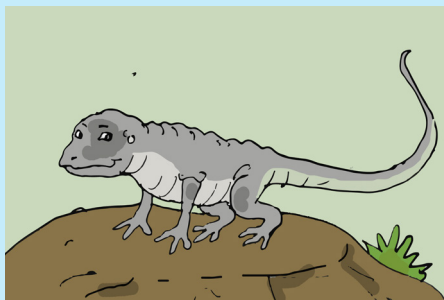
m'

M'

n'

N'

tthy Tthy



M' we

I tthya ka

N' we ne ne

M' kaa ka

O tthya wa

N' wa na ni

M' we nye

E tthya ko

N' woo ro tha



itthyuuwi an'wenene m'wenya

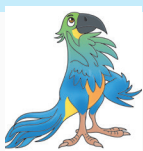


Itthyaka sinipakiwa ekathe.  
N'wenene owerya otthyawa.  
Nyuwo m'waaka, miyo kaamurapa.

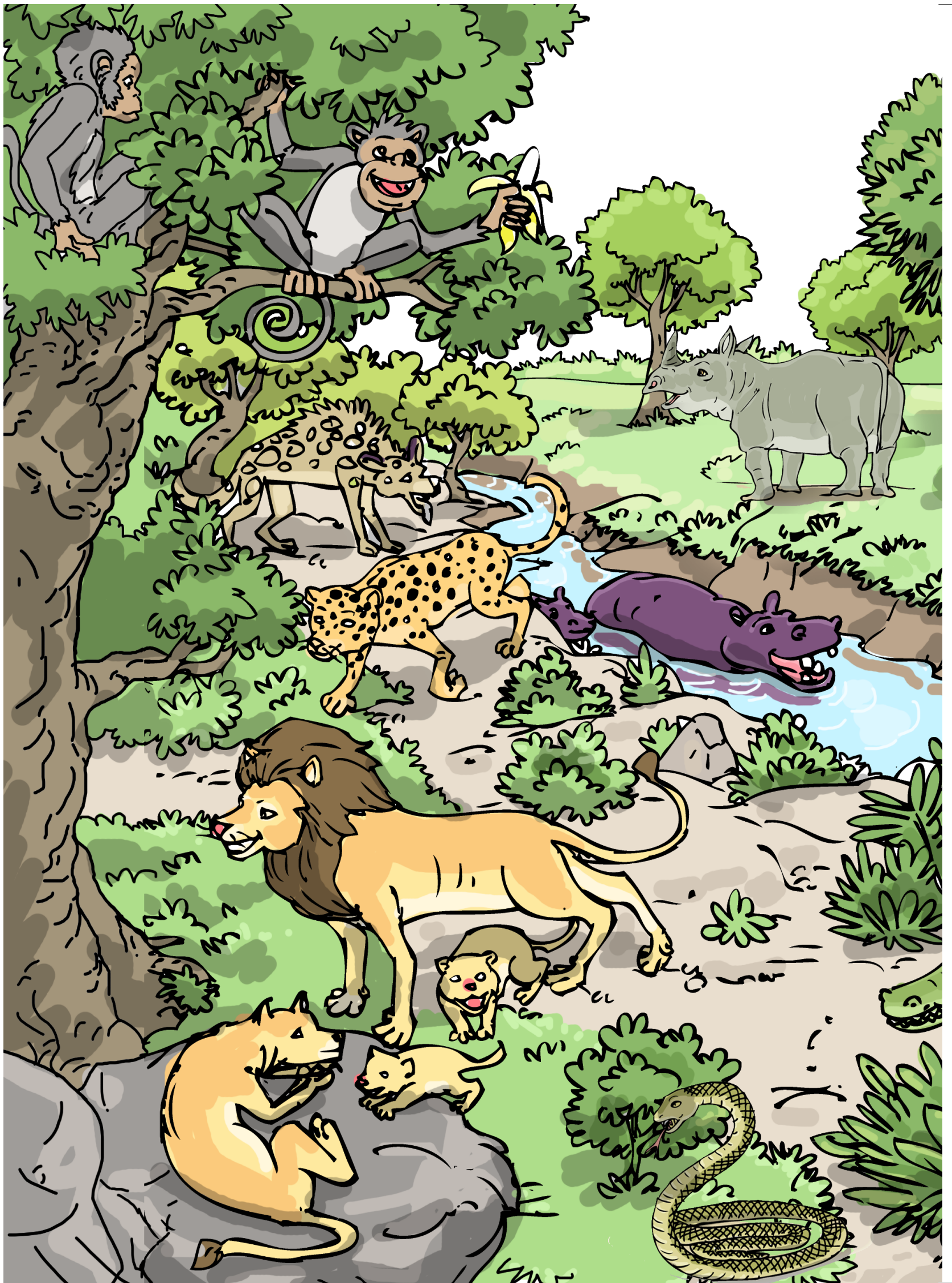


## Etthyaako ya n'wenene

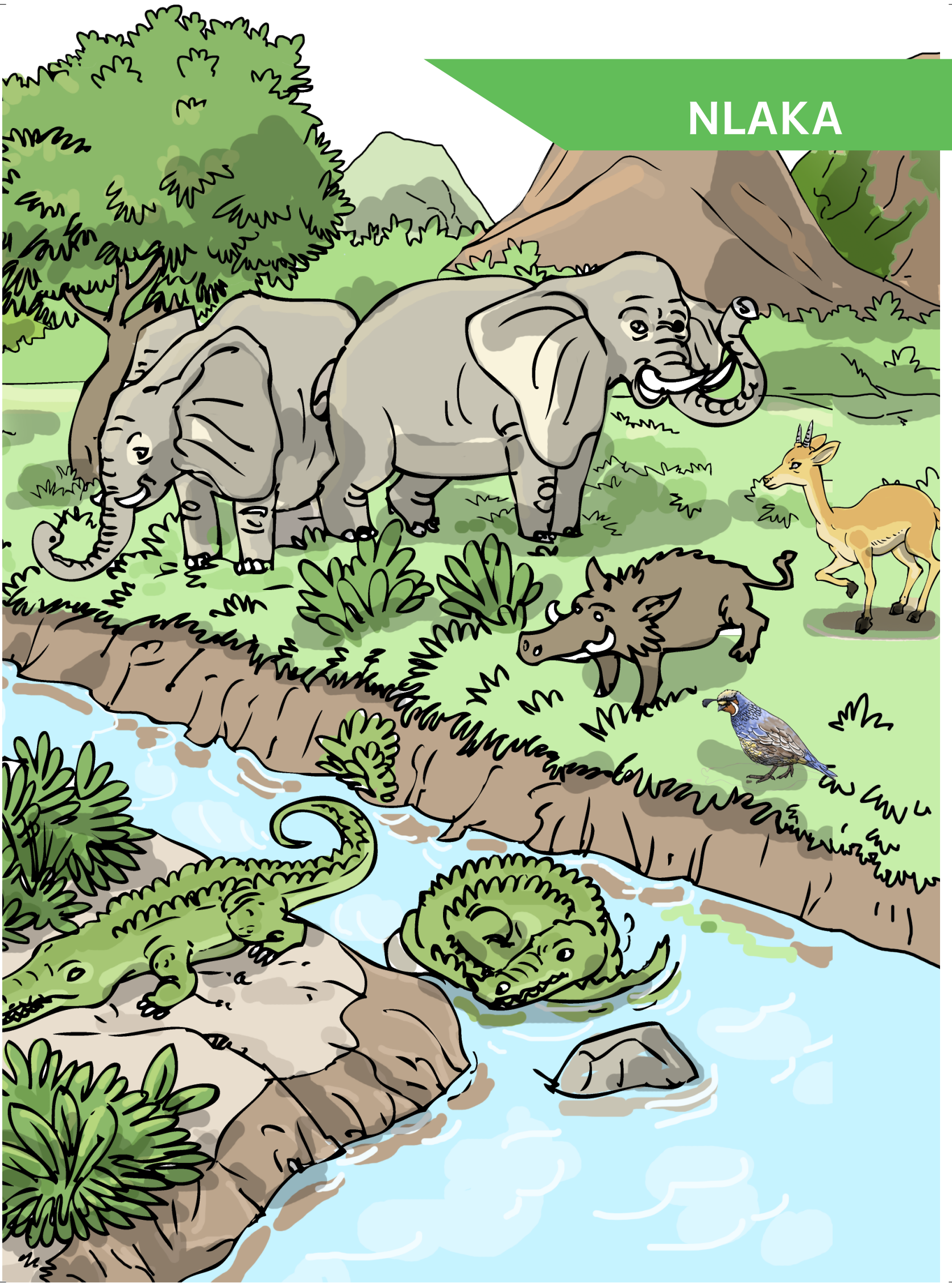
N'wenene onaapasa ni metto mixexe.  
Owo owerya otthyawawa am'weha mutthu.  
M'wala am'weha n'wenene n'woorotha.  
Nihaamane an'wenene wala inama ikina.  
Anisivele olikanaka mwa inama sa vate.

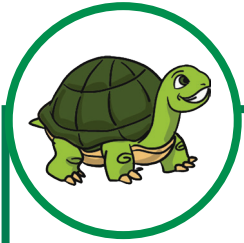


- ① Mwaamunama xeeni onilavuliwa va?
- ② M'wala oonale exeeni n'woorotha?
- ③ Niiriheke exeeni inama?



# NLAKA

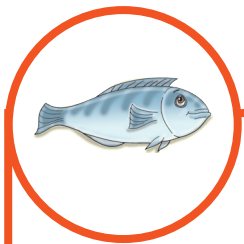




m ma tta m mi lo  
m mu si m mwaako



mmatta mmwaako mmusi



Mmo mmatta mwa ataata.  
Mmwaako sookhala miri.  
Ola mmusi aka.





## Namarokolo

Namarokolo aakhala mmawaani.

Atthu yaaruwerya ipyo.

Ipyo iyo saasukiwa mmunoni.

Namarokolo aanikhuura ipyo iye.

Owo aaniipitha mmalaxini.

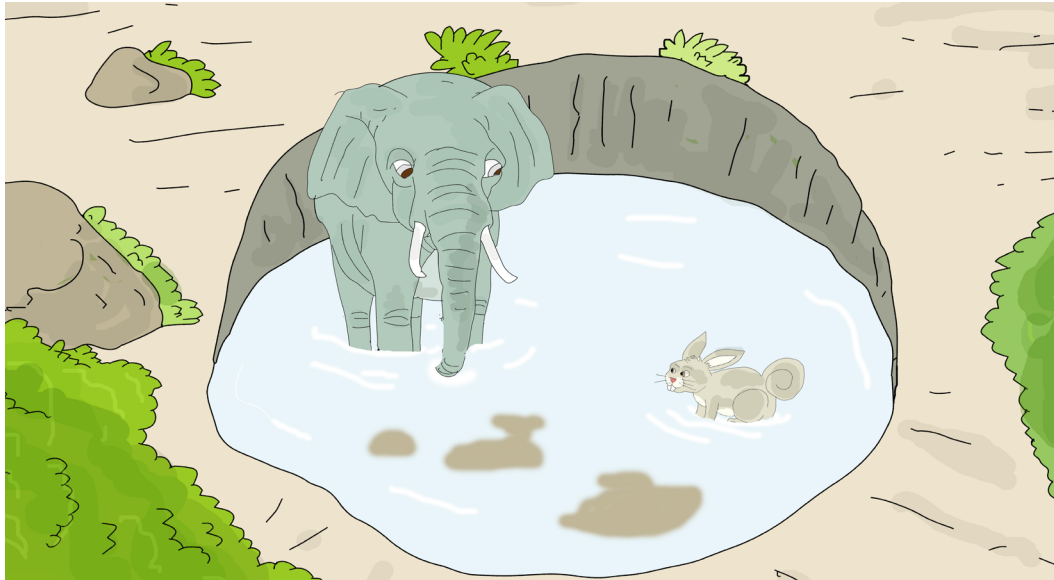
Ti vo, vano, onikhalaawe mutakhwani.



- 1 Namarokolo aakhala woowi?
- 2 Ipyo saasukiwa vaavi?
- 3 Exeeni onikhalaawe mutakhwani?



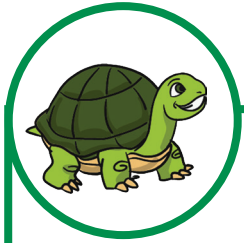
- 1 Onoona exeeni veelataratoni va?
- 2 Elapo ahu aakhala atoropa?
- 3 Ti ovi muteko a atoropa?



**Namarokolo ni etthepo**  
Khalayi inama saakhala mmwaako.  
Waahiphiya okathi wa elimwe.  
Etthepo yaahithipa ehimye aya.  
Namarokolo aahituphela mmaasini.  
Etthepo yaahimuvara namarokolo.  
Owo aahivekela wiira oswamihiye.



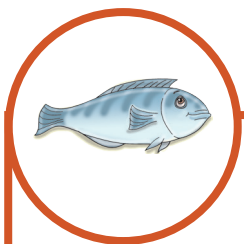
- 1 Khalayi inama saakhala woowi?
- 2 Etthepo yiira exeeni?
- 3 Namarokolo aapakale exeeni?



m phee ra            m pa pha ya  
m pwii ri



mpheera    mpaphaya    mpwiiri



Mmo mphiro mwa empa.  
Mpwaro oreera okilaathi.  
Mpiiru mwaapalame onihuuwa.



## Olimela ematta

Musyakiha namalima.

Owo ohaala mpheera.

Musyakiha onilimela mphivi.

Mphivi onipakiwa ikaruma sa mpwaro.

Owo ohaala tho mpaphaya.

Ti vo, vanireeraaya okhapelela miri.



1 Musyakiha onivara exeeni?

2 Mwiri xeeni waalalyaawe?

3 Ti sivi miri sa mihokhorokho?



- 1 Onoona exeeni veelataratoni va?
- 2 Mwanamwane okuxale exeeni?
- 3 Etthu yooreera olya mihokhorokho?



## Miri sa mutakhwani

Mpeepheya ookhalana miri.

Owo ookhalana mpheera ni mpaphaya.

Okhalana tho munika ni mpwiiri.

Mutakhwani sookhala miri.

Mpila, khampiri, mphivi ni ikina.

Oreera okhapelela miri sa elapo.



1 Miri soowiima ti sivi?

2 Ti sivi miri sa mutakhwani?

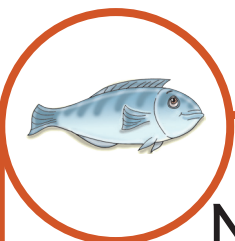
3 Atthu anikhapelela sayi miri?



n naa ri                      n na kha la  
n na pa phaa ri

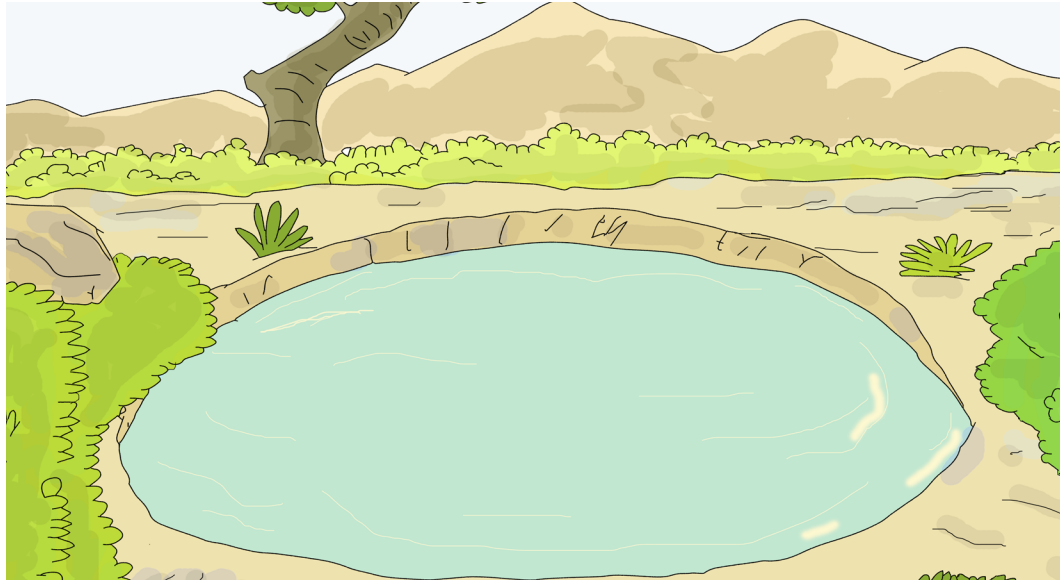


nnaari      nnakhala      napaphaari



Nnakhala oyariwe Onakhala.  
Ole oyariwe wa napaphaari.  
Ole oniihaniwa nnapaphaari.  
Nnaparari onikhuma Onaparari.  
Nnaari onihimya okhootta.





## Maasi

Maasi ovaha ekumi.

Vanumma vammilo, nin'wurya maasi.

Miri sinniheliwa maasi sininnuwa.

Inama sinniwurya maasi tho.

Nikhapelele mapuro anivaha maasi.



- 1 Maasi anivaha exeeni?
- 2 Maasi anireeriha exeeni?
- 3 Inama sinnireerela maasi?



- 1 Onoona exeeni veelataratoni va?
- 2 Matthiya anivaha exeeni?
- 3 Aluuxu anipatta sayi?



## Orattela maasi

Maasi mureerelo muulupale.

Epula tin'wiiha maasi.

Eyo yaahirupe atthu annivelavela.

Maasi annirikiwa mpuusu ni muturuneera.

Niira ninvirihiwa ni maasi ni eyoolya.

Maasi oowurya anireerihwa ni sereteesa.

Mapuro xeeni anirikiwaya maasi?

Ti ani anivelavela epula yaahirupe?



- 1 Mapuro xeeni anirikiwaya maasi?
- 2 Ti ani anivelavela epula yaahirupe?
- 3 Nireeriheke sayi maasi ahu?

# MAWEHAWEHERYO



mm Mm mp mph nn Nn



M ma tta

M phee ra

N naa ri

M mwaa ko

M pa pha ya

N na kha la

M mu si

M pwii ri

N na pa phaa ri



mmilo  
mpwaro

mphiro  
nnaari

empa

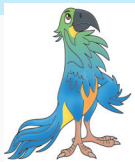


Mmo mmatta mwa ataata.  
Mmo mphiro mwa empa.  
Mpwaro oreera okilaathi  
Nnaari onihimya okhootta.



## Mphivi wa mmiravo

Mmiravo mmosa aari ni mpwana awe  
Owo aahimuvaha mucampulo a mphivi.  
Mpwana awe ole aari vannikani.  
Munika owo kiwaareere wiima enika.  
-Miyo okisivela enika.  
-Nihinatthi olya nirapihe ni maasi  
ooreera.



- ① Mmiravo aari ni ani?
- ② Exeeni yiimale vannikani?
- ③ Munnirapiha enika muhinalye?



# ERUTTHU YA MUTTHU NI EKUMI





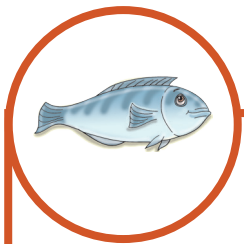
n ha sa  
n lu mi

n ku ku tta  
n lo pe



nhasa  
nlumi

nkukutta  
nlope



Nhasa oniheliwa muhusi.  
Hiyo ninniwela nkukutta.  
Niipeke nlope natteeliwa murima.





## Okumi

Nhopo mufurumeeru.

- Miyaano kinaaloola aretta.
- Okasoopa mayitho wala maaru oreera.
- Mayitho yooneke nlaka nooreera.

Mufurumeero aanixuttiha wiikasoopa.

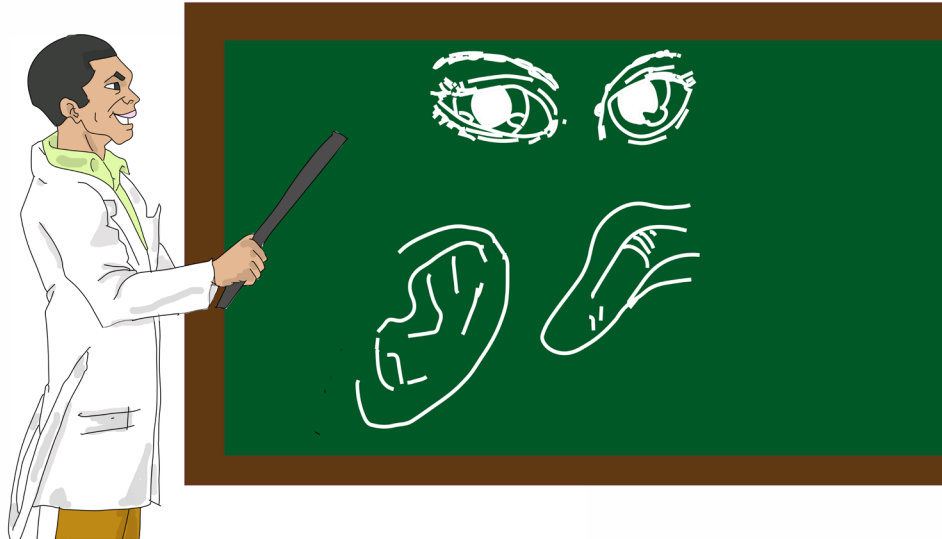
Nihaana okasoopa erutthu ahu.



- 1 Muteko xeeni wa mayitho?
- 2 Muteko xeeni wa maaru?
- 3 Niratteleke sayi erutthu ahu?



- 1 Muthiyana orina exeeni?
- 2 Muthiyana omuwareneni maaxikara?
- 3 Munikasoopaka sayi iretta?



## Erutthu ya Nkuukhi

Mayitho annoona.

Maaru ti anniiwiha nlope.

Hiyaano ninoona wunkha ni iphula.

Nlumi ninoona osiva eyoolya.

Niikasoope iretta.



- 1 Mayitho anoona exeeni?
- 2 Ankhi maaru muteko aya ti ovi?
- 3 Iphula muteko aya exeeni?

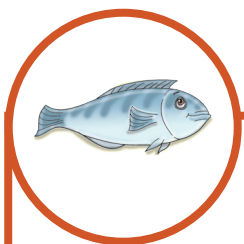
## Esumana 34



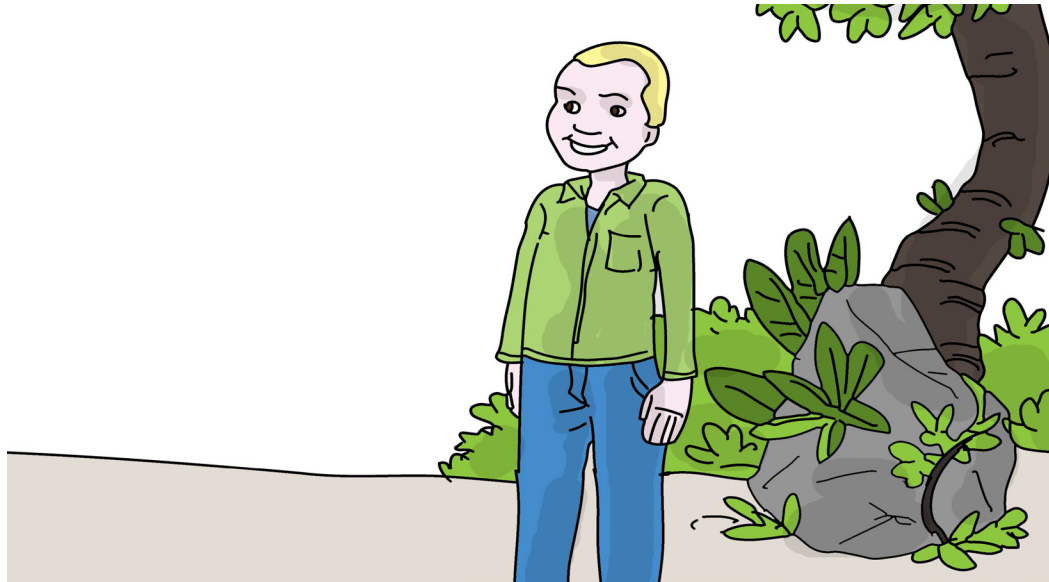
n the te      n re ka  
n ta pi ta      n ta ta



nthete      nreka ntapita      ntata



Nthete oniyaraniwa mwaana.  
Ixuwaari sinaaliwa ni ntata.  
Kwaatu mwannama oohikhalana  
nreka.



## Ekuwo ya Nono

Olelo nihiku na exikola aka.

Miyaano kiron'we ni ehempe aka.

Nsana kaaron'we oxikola kirenreene.

Ehempe aka yookhalana nlepa.

Nireeriheke ikuwo sahu.



- 1 Ekuwo xeeni owanraawe Nono?
- 2 Nono aaron'we sayi oxikola?
- 3 Ehempe awe eri sayi?



- 1 Onoona exeeni vamukhoyini va?
- 2 Malepa xeeni onoonaawo?
- 3 Ti ani anireeriha ikuwo?

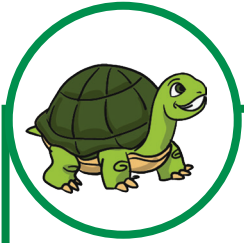


## Oratta wa Amina

Nkireere ophwaneliwa.  
Kiwanre ikuwo sooreerela.  
Nhihiye ikuwo sanyu sinananre.  
Olelo ikuwo saka sooreera.  
Niratteleke ikuwo sahu.  
Ntata nananara nihivare ikuwo.



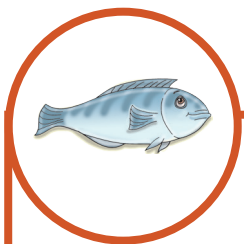
- 1 Amina owanre exeeni?
- 2 Ikuwo sawe siri sayi?
- 3 Niratteleke sayi ikuwo sahu?



n ca ce      n ve lo  
n xi lo

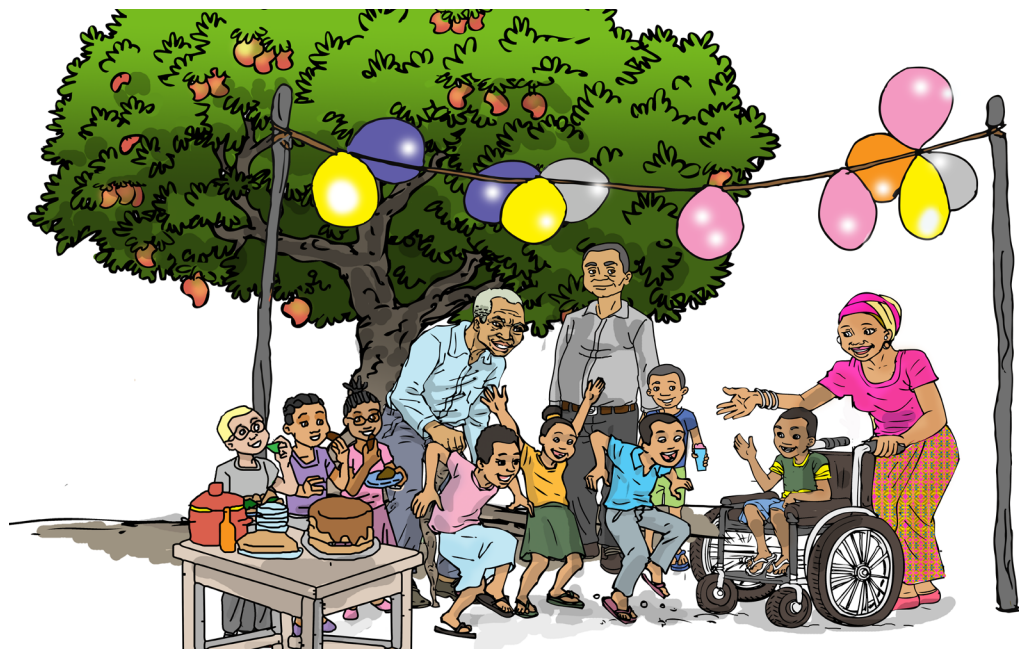


Ncace      Nvelo      nveetho  
nxilo      nxaxa



Mmiravo, m'wehe ncace.  
Nyuwo m'waaka, miyo kaanvela.  
Moonika, m'waane nxilo nno.





## Ohakalala

Nvini nakhulu a Nkuukhi.

Miyo koohakalala ni anakhulu aka.

Okisivela vanceene anakhulu aka.

Vanxela kinaakhaliha anakhulu.

Miyo ni awo noohakalala.



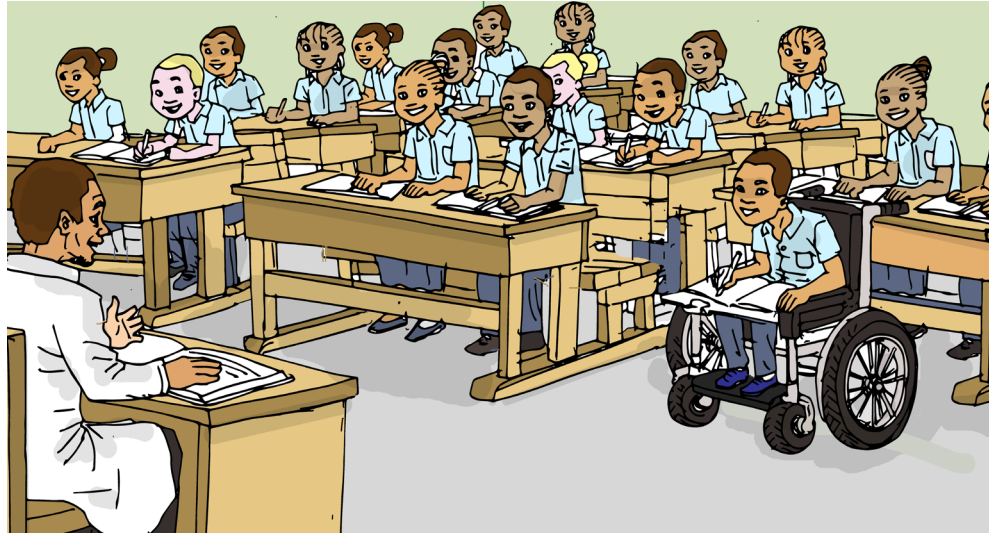
1 Anvini ti ani?

2 Nkuukhi onaakhaliherya ani?

3 Awo anihakalala mwaha wa xeeni?



- 1 Mmiravo oniira exeeni?
- 2 Athiyana aniwela vaavi?
- 3 Onnireera waakhaliha atthu?



## Ayipu

Ayipu mwaana onikhala Wanxilo.  
Owo khan'werya weetta.  
Mwaapara awe oomukhaliha.  
Owo aahixoviwa mpakha oxikola.  
Noomala osoma aahirowa owaani.  
Owaani aaphwanya ncace olya.



- 1 Ayipu onikhala woowi?
- 2 Mwaapara awe onipaka exeeni?
- 3 Ayipu aaphwannye exeeni owaani?

# MAWEHAWEHERYO



nh nk nl nt nr nth nc nv nx



N ta ta

N ca ce

N ha sa

N re kha

N vee tho

N ku ku tta

N the te

N xa xa

N lu mi



ntapita

nreka

nthete

ncace

nvelo

nxilo

nhasa

nkukutta

nlope



Mmo mmatta mwa ataata.

Mmo mphiro mwa empa.

Mpwaro oreera okilaathi

Nnaari onihimya okhootta.



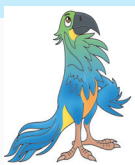
## Hiyo ninniwela nkukutta

Noone saana malepa a nkukutta.

Nhasa ni nvelo onnikhalana malepa nave.

Nthete a Nkuukhi ookhalana malepa nave.

- Nrowe nithoonye malepa ni ntata.
- Nna nxilo na nlepa na ettuurwa.
- Nna nxilo ninxila wuru, wuru, wuru.



① Hiyo ninoona ni exeeni?

② Malepa xeeni onisuwelaawo?

③ Malepa anikhala vaavi?





