

Nipawe na malepo

Emakhuwa

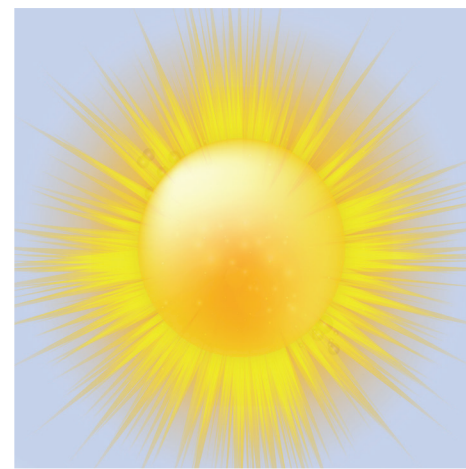
a



Anela

A

n



Nsuwa

N

o



Oviilu

O

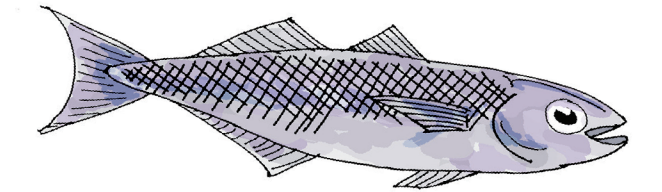
m



Matata

M

e



Ehopa

E

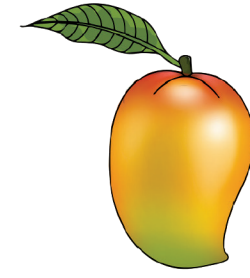
w



Wepa

W

i



Imanka

I

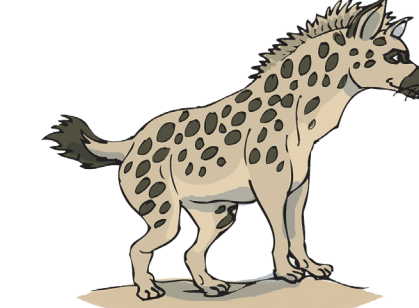
l



Lookho

L

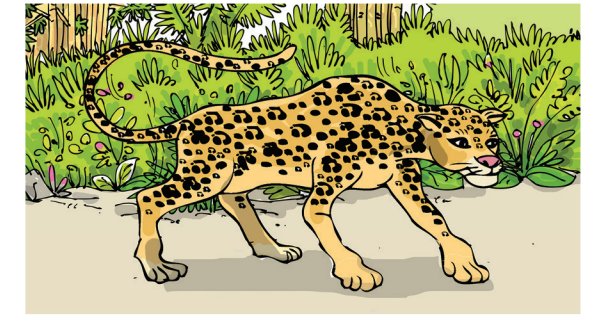
u



Kusupa

U

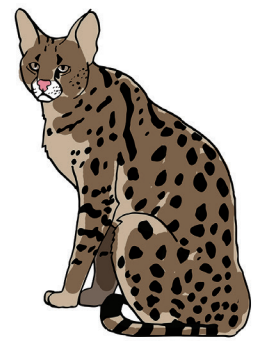
h



Havara

H

k



Kahupwe

K

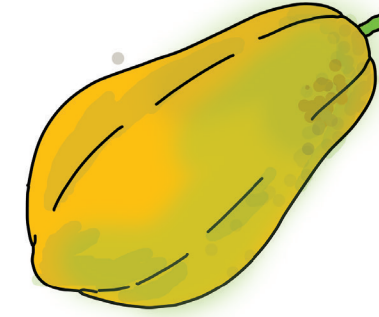
r



Rataasi

R

p



Paphaya

P

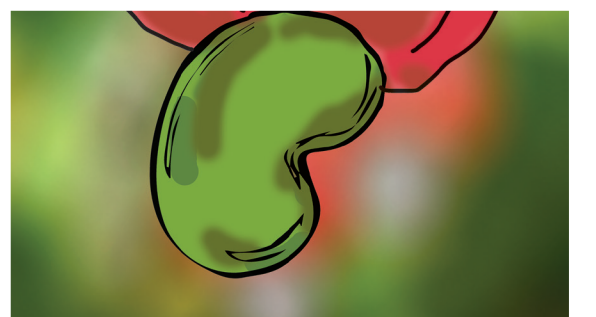
y



Yiipo

Y

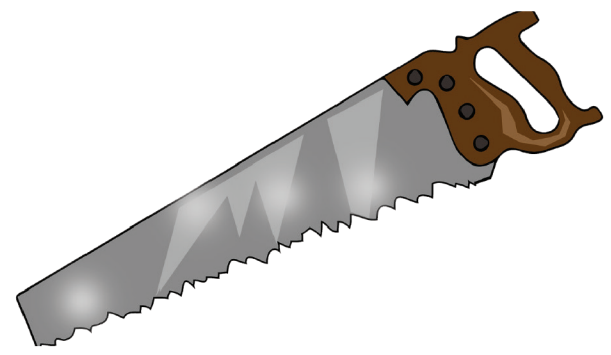
t



Tiikwa

T

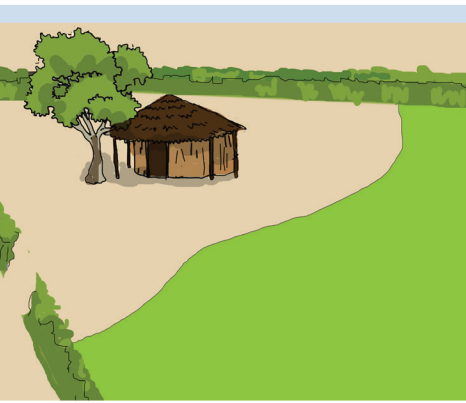
s



Seroti

S

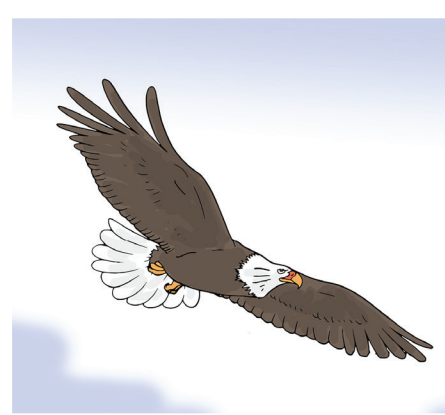
v



Vate

V

x



Xaaka

X

c



Coolo

C

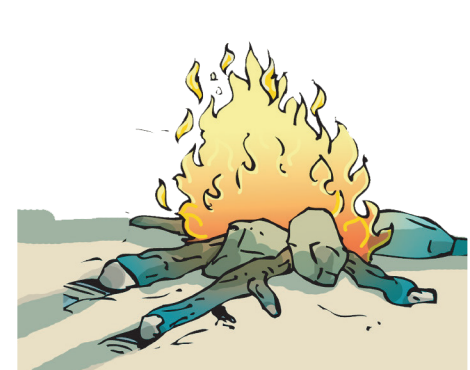
aa



Aalyu

Aa

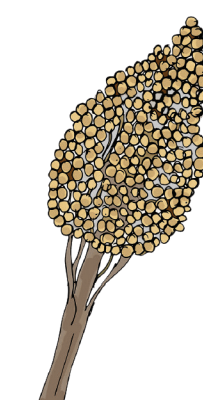
oo



Mooro

Oo

ee



Meele

Ee

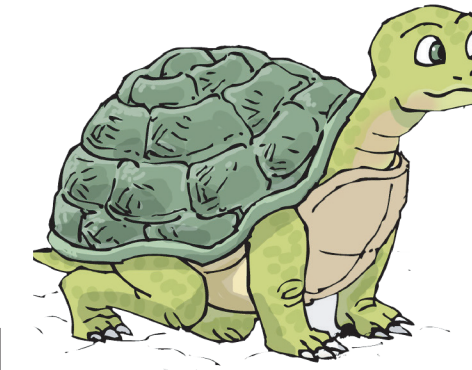
ii



Niino

Ii

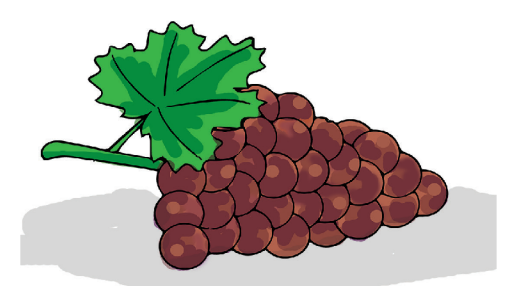
kh



Khapa

Kh

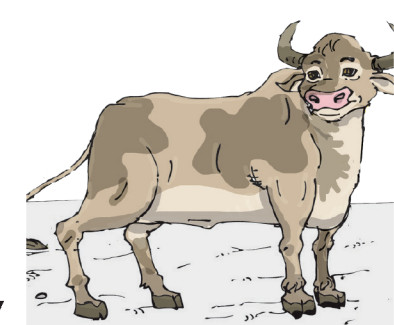
uu



uuva

Uu

ny



Enyompe

Ny

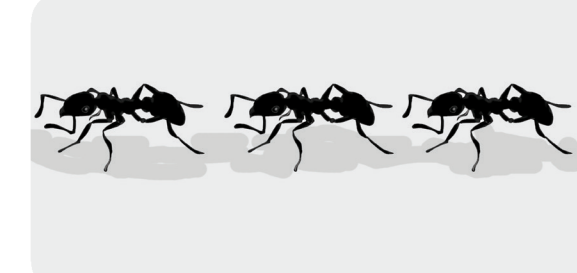
tt



Ttootto

Tt

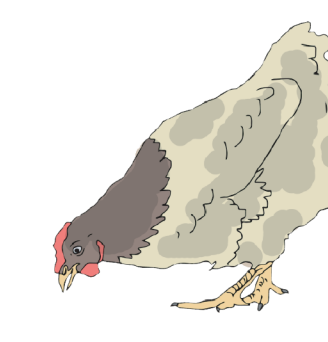
th



Thuukwe

Th

ly



Mulyakhu

Ly

tth



Tthoro

Tth

ph



Phako

Ph

f



Kafulu

F

Esta produção tornou-se possível graças ao apoio do povo Americano através da Agência dos Estados Unidos para o Desenvolvimento Internacional (USAID). O conteúdo desta publicação é da total responsabilidade do Ministério da Educação e Desenvolvimento Humano da República de Moçambique.

