



Emakhuwa

Impa ni ikaruma sa mpaani



REPÚBLICA DE MOÇAMBIQUE
MINISTÉRIO DA EDUCAÇÃO E
DESENVOLVIMENTO HUMANO



USAID
DO POVO AMERICANO





A produção deste livro tornou-se possível graças ao apoio do povo Americano através da Agência dos Estados Unidos para o Desenvolvimento Internacional (USAID). O conteúdo desta publicação é da total responsabilidade do Ministério da Educação e Desenvolvimento Humano da República de Moçambique.

FICHA TÉCNICA

Título:

Impa ni ikaruma sa mpaani

Língua:

Emakhuwa

Coordenação Editorial - MINEDH:

Telésfero de Jesus

Vamos Ler!:

Samima Patel, Abdala Machude, Amélia Bazima, Dilson Buque e Francisco Sampaio

Autores:

Neves Jacinto Anselmo, Júlio Bernardo, Lucas Bonga, Eduardo Napualo, Elmano Mucopo, Ana Jahamo e Saraiva A Aibo

Assessoria Linguística e metodológica:

Carlos Manuel e Maurício Bernardo

Ilustração:

Orlando Chissano

Maquetização:

Walter Sambo

Capa:

Orlando Chissano e Walter Sambo

Impressão:

Nova Delhi, Índia

Tiragem:

2648

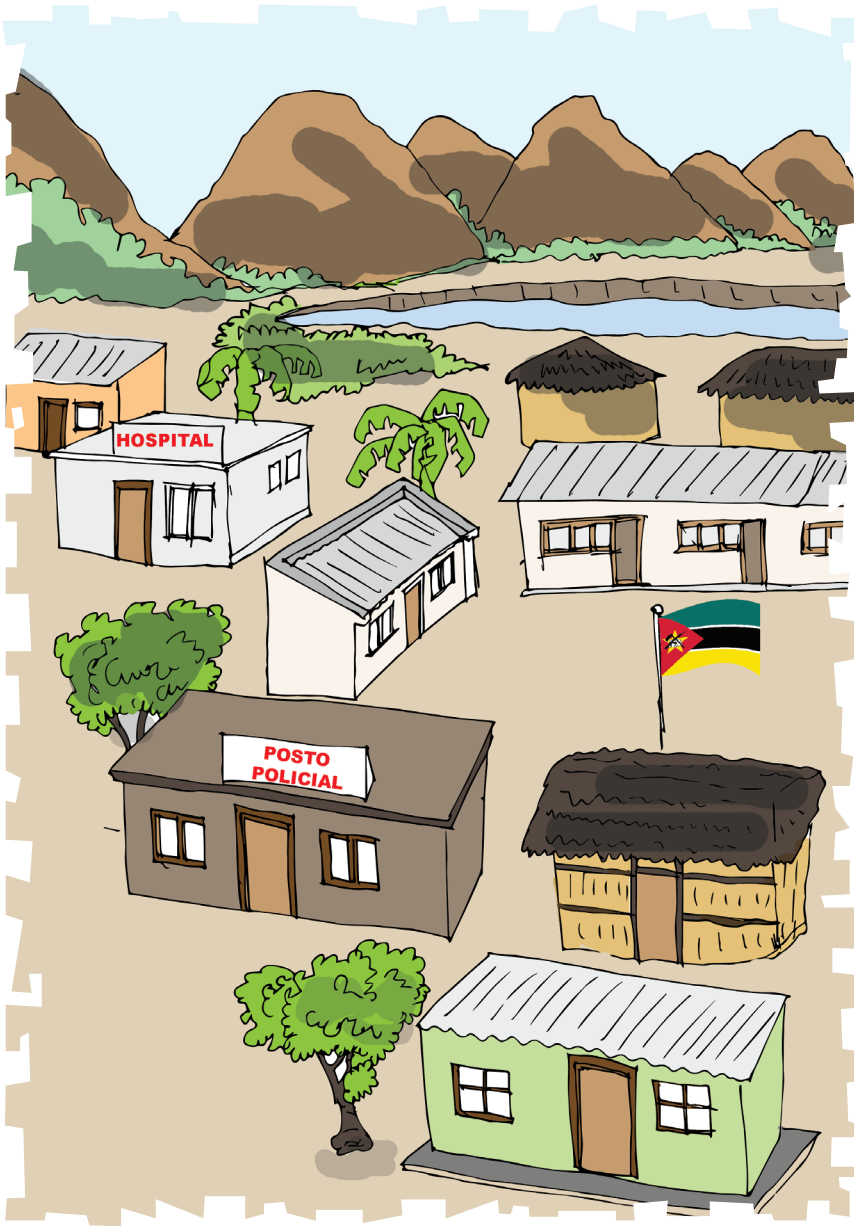
N.º do registo:





10060/RLINICC/2019

Financiado pela USAID

República de Moçambique







Aputu oorowa Omawuwa.
Omawuwa epooma enikhala
Oniyasa.
Owo onaaxukurya apwaapu
awe.
Awo anikhala epooma ela
yooreera.
Empa anikhalaaya ti ya
malaata.
Ti ya ipulooku ni epomiwe
ni esumentu.





Omawuwa sookhala impa
suulupale.

Sootekiwa ni ikaruma
soovirikana.

Siri impa sootekiwa
saaneene.

Atthu annareeriha impa
anikhalaaya.

Aputu onnaakhaliherya
oteka empa.

Siiso, owo onnixutta oteka
impa.





Aputu onnaakhaliherya
miteko sikina.

Owo onnivela ni onnirapiha
iparatho.



Omawuwa Aputu oopaka
opatthani.

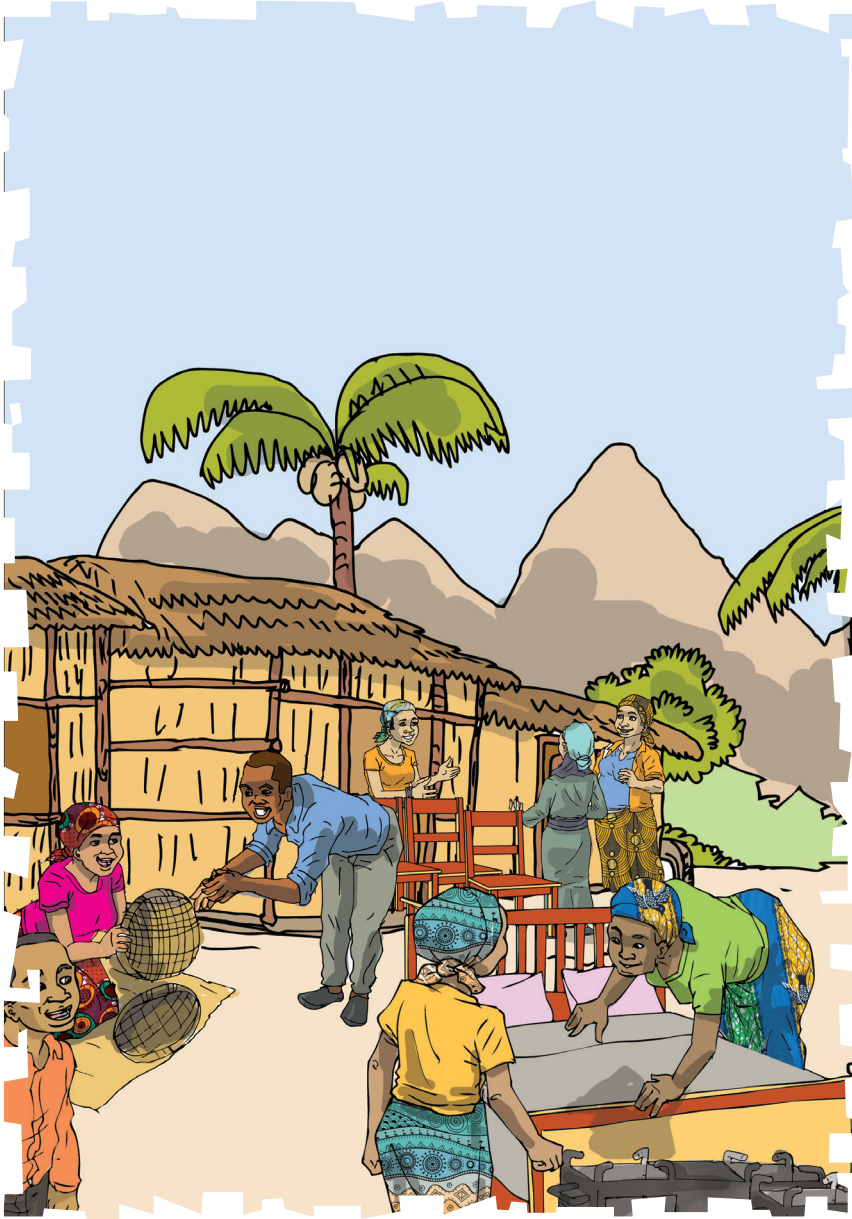


Opakale ni anamwane
akina.

Awosa annirowa woona
miro sinivira.

Mmo sookhala ihopa
sooreera woona.







Omawuwa yookhala epasari
esya.

Eyo nipuro sintumihiwa
itthu, ntoko:

Ikhaama, iryawe, mwinli,
ithelo...

Epasari ya Omawuwa ti
yuulupale.

Iwo annirowa atthu
anceene.

Ari atthu anthuma ni
anthumiha itthu.



Anamathumiha a Omawuwa
wiiraana.


Khula muxovo wa itthu
nipuro naya:

Mapuro a matthatto
oorakama saana.

Mapuro a ikori suulupale ni
sa malepa.


Mapuro anitumihiwa iryawe
ni mithi. Irawe soowiixa
ni mithi soowiittivala.






Ikaruma iyo simpakiwa ni
itthu:

Efukawu ompakiwa ni
eyuuma.



Ekhatera empakiwa ni
ithaapwa.



Ekori empakiwa ni mapotto.

Mwinli ompakiwa ni
etttheere.

Ethelo empakiwa ni
mithala.







Mureerelo muulupale wa
impa.

Mpa ninnitthyawela oriirya
ni oviha. Oriirya wa epula
ni oviha wa nsuwa.

Siiso, sihaana otekiwa impa
sooloka. Ikaruma saya
sootekeliwa silipeke.

Mapuro ooteka impa
ahiphiye maasi.



Impa nave sinkhapelela
ikaruma sahu.

Ikaruma sinrumeelaahu
mmawaani.

Impa sinnivirikana opakiwa
waya.

Sookhala sa sirapi ni
soorukurerya. Impa sikina
sinkhala sa mukottha .

Etthu yooreera olipiha impa.





Impa iyo sinnikhala sa
malaata.

Sikina sinnikhala sa
nammariwa.

Sikina tho sa ipulooku sa
nttope.



Impa sa malaata simpakiwa
ni itixolu.



Sikina ti sa ipulooku sa
esumentu.

Anammariwa ampakiwa ni
mapotto.

Mapotto awo anlipiheriwa
ni mithala.







Vatthokoni sinnikhala
ikaruma.

Ikaruma iye sinrameliwa
vate.



Vatthokoni vaatthu
sinniphwanyeya:

Ikhatera, meesa, iparatho,
ifukawu...

Ikaruma sootheene
sinooratteliwa.

Tivo anamwane ala
anirattelaaya.





Nirattele ifukawu, ithelo ni sikina.

Nave sikina siniheliwa soolya.


Nooneleleke mirameelo sa ikaruma.

Mwaha vakhaterani anikilaathi atthu;

Vameesa vanipwehiwa soolya.

Siiso, vannireera orattela ikaruma.





Moone tho ikaruma
sikina iya: Matthatto
anoorupeliwa ni atthu.
Arumaariyu oniheliwa
iliivuru.

Nipweheke saana ikaruma
iya mpa.

Nihaana orattela ikaruma
iya saana:

Otatha, opuputtha ni
orapiha.

Narattela ti simpisaaya
ohononeya.

²Opuputtha = opuputta = okukuttha





Nihiku nne, saathukuma
ikaruma.




Iyo saavaanyihana
mireerelo saya.

Ekori: -Miyo kinivaha
ikhove.

Meesa: -Miyo kinnaahiya
atthu alyaaka.

Ntthatto: -Miyo kootepaxa
osivelexa.

Atthu anookikilaathela ni
annarupa.



Mpantta mukina ikaruma
sihaakhula:

Exileera: -Miyo nkininttiha
soolya. Miyo nto
koosivelexa vatthokoni.

Efukawu: -Miyo kinaapeya
soolya.

Soolya sinikhala sooviha ni
soosiva.

Ikina saaniixoona
winnuxexa siiraka:



Arumari: -Omaaliwe, miyo
kilavule.

Ootheene ahu nihaana
mureerelo.



Miyo kinipweha itthu
soowaatta.



Khaavo onivareliwa
meekhaawe.

Khula mmosa oohaana
muteko awe.

Ootheene hiyo
ninnaakhalaha atthu.

