



Elomwe

# Ekumi ahu ni mphurelo sa soolya

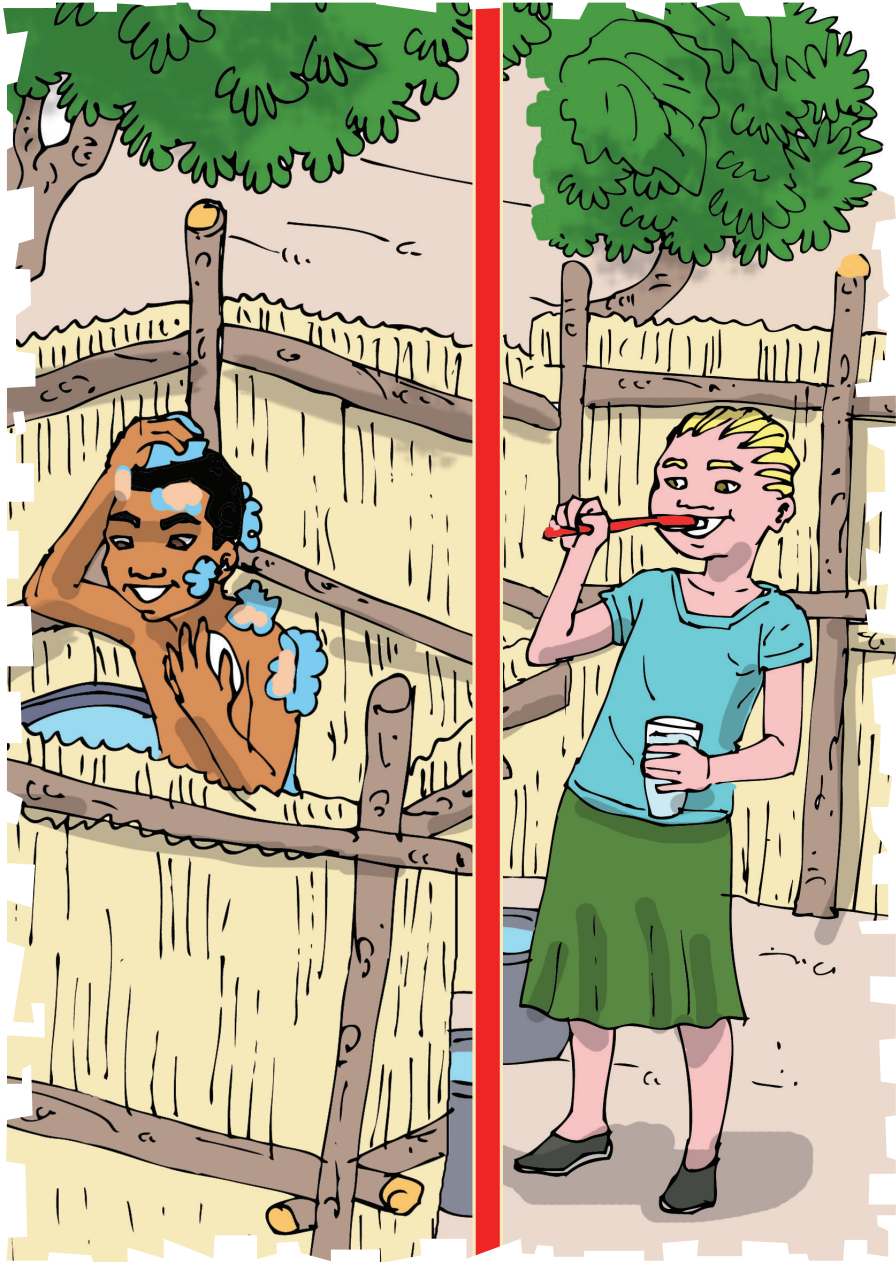


REPÚBLICA DE MOÇAMBIQUE  
MINISTÉRIO DA EDUCAÇÃO E  
DESENVOLVIMENTO HUMANO



**USAID**  
DO POVO AMERICANO







Kiki onahuserya vakalaasini  
ya neeraru.

Ola avinya onnalokomaniha  
onakoneyiyevo.

Onnareherya maahi ni  
sapawu wi arape.

Aayaka orapa onnakuxa  
exikova awe ya miino.

Mahiku makinaaku onnakucha  
miino ni mulala.

Mulala exikova yaphaama  
phara okuchano miino.

Nrapiheke eyano ni miino ahu  
mahiku ootheene.

Naahikuche miino, nnahaala  
ophwanya ireca.





Kiki aayaka osikolani,  
onnanvirelaa Napito.

Oopiili, anahuserya esikhola  
emoharu.

Napito, onrapa ni wiireherya  
wooxixelo.

Kiki ni Napito aatepa owarela  
ni ophwneliwa.

Ikuwo saya ti soocampwa ni  
winkomaariwa.

Ale onthamwe ni Liinu, enaya  
vamosa osikhola.

Liinu ayaaka osikhola  
onninrehererya phaama.

Amaama awe Liinu, ahaavaha  
nvithe ale ooraaru.



Kiki, Liino ni Napito aatepa  
ophwneliwa.

Ootheene annarapa ni  
aanakucha miino.

Kiki ovathaanya miihi awe ni  
aatepa oreera.

Napito miihi awe tookuveya  
ntho ehaxuliwe.

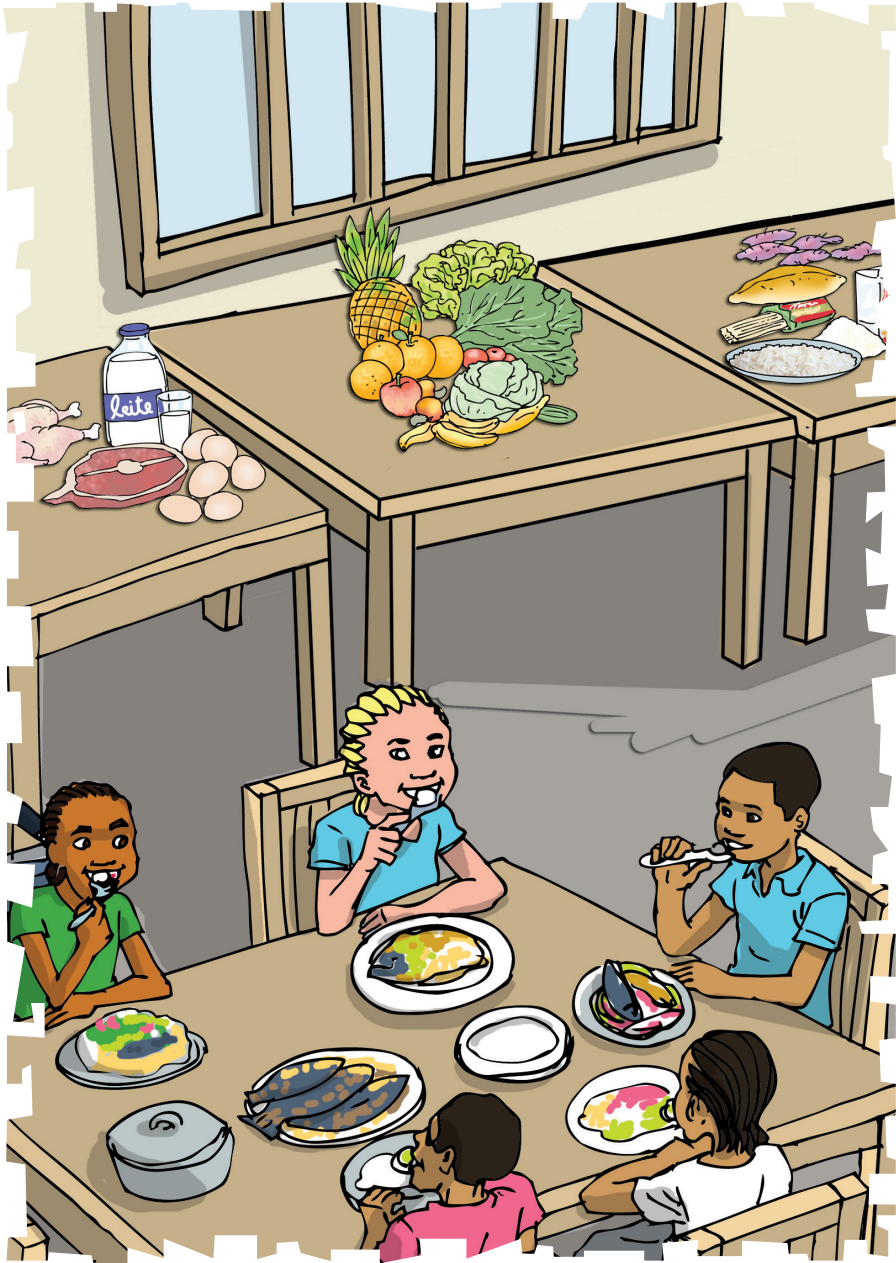
Mahiku ootheene  
onnaphwanela epewewe.

Epewe ya mwiili ahu enniikara  
ni osepa ireca.

Muchu ni epewe onkhala  
muchu ni ekumi.

Onnaphwanela olya phaama  
wi nilipixe mwiili ahu.







Wi nikhhaleno okumi, mwiili  
ahu onnachuna:

- Okhaleliwa epewe mahiku ootheene.
- Olya phaama ni soolya soohiyanahiyana.

Arivo makhuuru mararu a  
soolya:

- Soolya inakhapelela mwiili.
- Soolya inalipiha mwiili.
- Soolya inavaha ikuru mwiili.

Va wii hiiha, onnaphwanela  
okhalela epewe soolya.





Nilyeeke soolya  
soohiyanahiyana.

Neerano hiiha, nnookhalano  
ekumi.

Achu ootheene onnakhweleya  
olyaaka phaama.

Anamwane elyeeke phaama  
wi yaakuveke wiinuwa.

Ntho, onnaphwanela wi:

- Soolya ni sawiims  
irapihiweke ihaakunve olyiwa.
- Soolya saapeyiweke phaama  
Neerano hiiha, ekumi ahu  
onamukhala phaama.





Amaama awe Kiki ennaapeya  
aphaama.

Nihiku nawupuxera oyariwa  
wa Kiki yaahaapeya.

Ale yaahaapeya soolya  
soohiyanahiyana.

Wooxixelweene, yaavela  
vaate ni mukusinya.

Ale yaarapiha misiyo  
sootheene.

Epaka epoolu ni ephepha ya  
ephepa.

Yaahaapeya nvuka, emece ni  
cipampa.

Kiki aahaawopa  
asinthamwene awe.







Omanle wuupuxerya oyariwa  
wa Kiki.

Asinthamwene yaalaanya  
erowa owaani.

Nana aphonyaka owaani  
aaphwanya amaayi.

Ale yaareheryerya mulapa wa  
apuye.


Apaapa awo aakula mila  
misyani sa apuye.

Mulapa mmoha ahenle  
okwaarutu wa.

Kookula milapa iho wi  
nikosoopekeno apuye.

Apuye annaruuha ereca ya  
malaariya.





Oxaakaaya, amaama awe Kiki  
yaavela vaate.

Muteko a Kiki waari othukumanya  
ikokhola.

Apaapa yaathipa nlici wi  
ithipeliwe ikokhola.

Amaama awe, yaahela ikokhola  
mulicini.

Apaapa awe Kiki voopacerya  
yaapaka:

- Yaalima manaxi yaarukurenrye  
empa.

- Ewoola manaxi ekerihaka  
mulicini

- Ekhuneela nlici warimo maahi.

Maahi ale yaatannya apuye vaate  
vaavale.



Malaariya ni kolera ireca  
sawoopiha.

Iha, sinarwa nakhala nipuro  
noonanara.

Naari, naalyaaka soolya  
soonanara.

Malaariya ananrweela lumiwa  
ni apuye.

Mwa yeela, nikoneke mpuwa  
wa mulapa.

Nave tho, niveleke mmavaate  
mwahu.

Koolera ereca yootepa  
yootakhala.

Muchu oniiceliwa koolera,  
onnamuhasa.







Makhalelo ahu nichariheleke  
ni ipewe:

- Epewe ya mwiili ni vaate.
- Epewe ya mmucecheni ni  
nnakhalaahumo.

Ela ti wi niikosoopeke ni mwiili  
ahu.

Nave, nihaxuleke miihi ahu ni  
okwasa ikharu.

Ntho, mwa yeelaru  
enaakwana, onnaphwanela.

Ocapa ni wiikomaara ikuwo.

Otatha onakonaahuvo  
nihaakunve okona.





Makhalelo makina a ekumi ti  
ala:

Wiikosopa ni axinama  
anatannya ireca.

Vawi hiiha, naasepeke apuye  
ni ikuluhi.

Nirupe mpuwa wa mulapa wi  
nihilummwe.

Hiiha, naaleleke  
asinthamwene sawoopiha.

Sintoko ireca inarwa  
nalummwa ni apuye.

Naahiikosopa ni okumi ahu  
onamuyeeheya.

Miruku iha, naaleeleke  
ananloko ootheene.





Ohiya ala, aakhala makhalelo  
makina.

Ohiya ichu sooreera ni  
orapiha soolya.

Nlyeke ichu soohiyana mahiku  
ootheene.

Olya phaama kahi tho  
waacerya olya ichu.

Soolya sene sikhapeleliweke  
phaama.

Ninyaweke mata nihaakunve  
olya.

Nave tho namaliha olya  
soolya.

Niikasopa hiiha, elapo ahu  
enamwiinuwa.







Nihiku nimoha, yaarupa epula  
ohiyu.

Ni epula, yaaheemela maahi  
va n' yateni.

Mmucecheni yaahikhalawo  
malici a maahi.

Malici a ikokhola  
yaasareyamo maahi a epula.

Waakhalavo owerya wa  
orelana wa apuye.

Ananloko yaapakana ociyela  
malici yaale.

Ana Minisu ni amama awe Kiki  
yaacyela malici.

Ale yiikosoopa wi atupusi  
ahirelane.





Va wi ananloko a muceche ole  
achu eepewe.

Henachuna yoonanara ni  
ireca mmucecheni.

Yahilokomanya eya yuuheela  
mmalicini a maahi.

Apaapa awe Kiki yaakuxa  
ekaaro ya mmatani.

Kiki ayaaka okucha miino wi  
ayeeke osikolani.

Ole arapa maahi a epula ni  
aakuxa esapawu.

Maahi a epula  
annaakhaviherya ananloko.

Ale annawuriwa ni  
orapiheliwa ichu sawaaca.



Mu elukuluku ya vakhaani,  
maahi yaahuma.

Maahi ale a epula waakuva  
wuuma mmalicini.

Noonaka hiiha, nikhapeleleke  
ale oowurya.

Hiiha, nookhala nirikelelaka  
maahi ni opweha.

Maahi a epula ninnarapela ni  
waapeela soolya.

Nave tho ninnawuurya maahi  
yaale a epula.

Maahi yaala, niheleke murece  
hooye waapeya.

Nii hiiho, ninoowurya maahi  
ni nrromelo.



