

Oreeriha Muceche





**- Lukas, tiyaphama nnareeriha
miceche sahu.**

**Emoha - moha eneeraya akhwiihu
opooma.**



**Lukas aahi:Tiyaphaama. Nrowe
nakuxe ihipa.
Nto tixeeni yaweera?**



**Ti yooreera owiichana achu ya
muceche yoola.**

Wi nlape vamoha muteko yoowo.



**Ayi, nareeriha muceche aahu
hanikuxa ireca. namasakanya ni
ereca ya mmatani heniphwanyaa!**



**Ilta, Liila ni Ali enahaala orwa wi
nlape vamoha?
Yaawo aasuwela wa muteko yoola?**



**Ayi, tiyaphaama ovaanela miteko
sa oreherya elapo.
Evelevelo onnaphwanela ale ekhale
vaava.**



**Muceche wareera achu ennathata
ni ekumi ni ohakalala!
Ni ireca hinakhala mulaponi.**



**Tiyoooreera, tiyoooreera
phaameene!**

Wootepa wuupuwela phaama!



**Nihicuwale oreherya mahiku
ootheene mapuro ahu.
okhalekevo epewe, ootheene
onaphwanela ovaanela.**



Omumula wahu

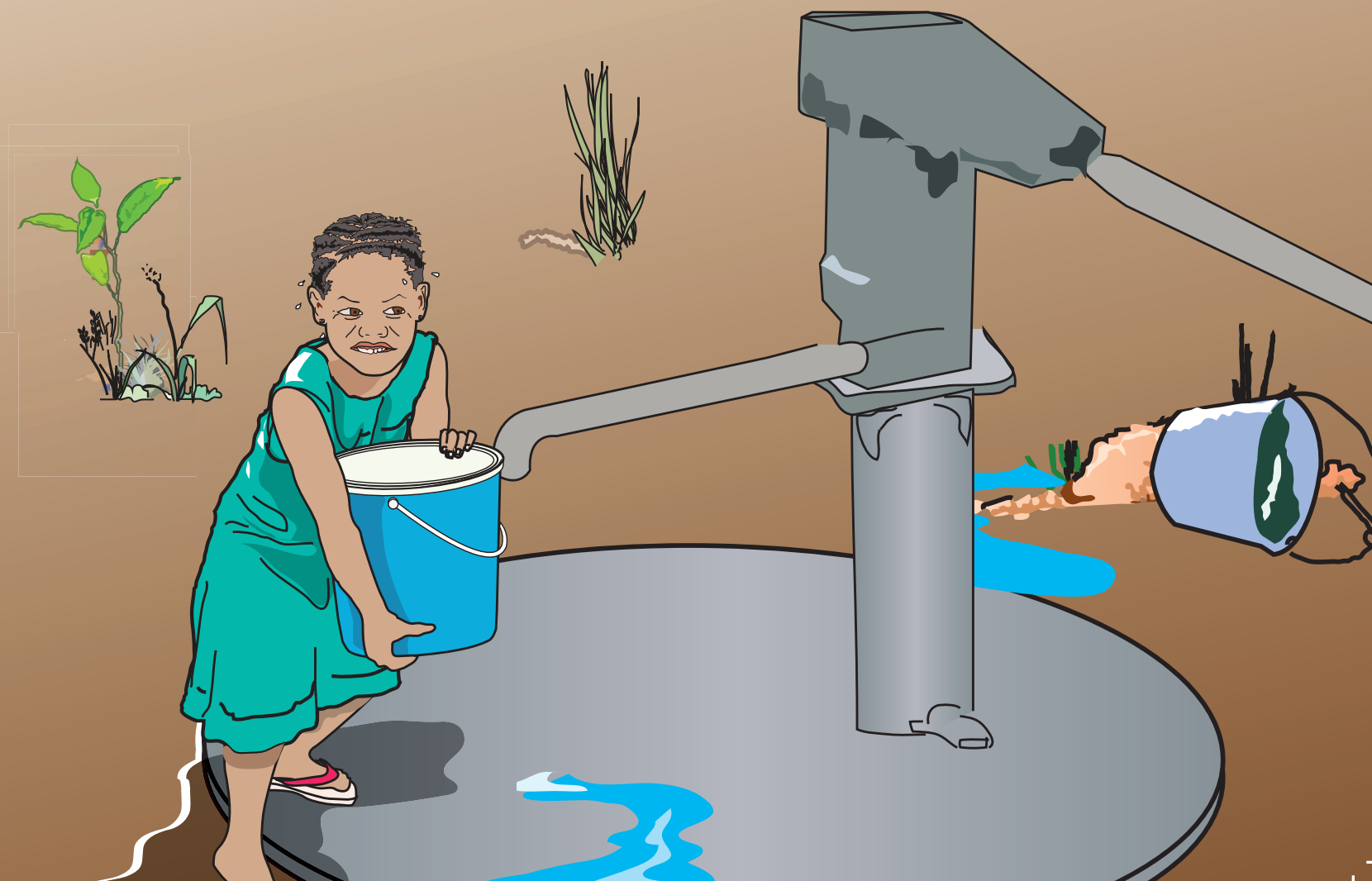
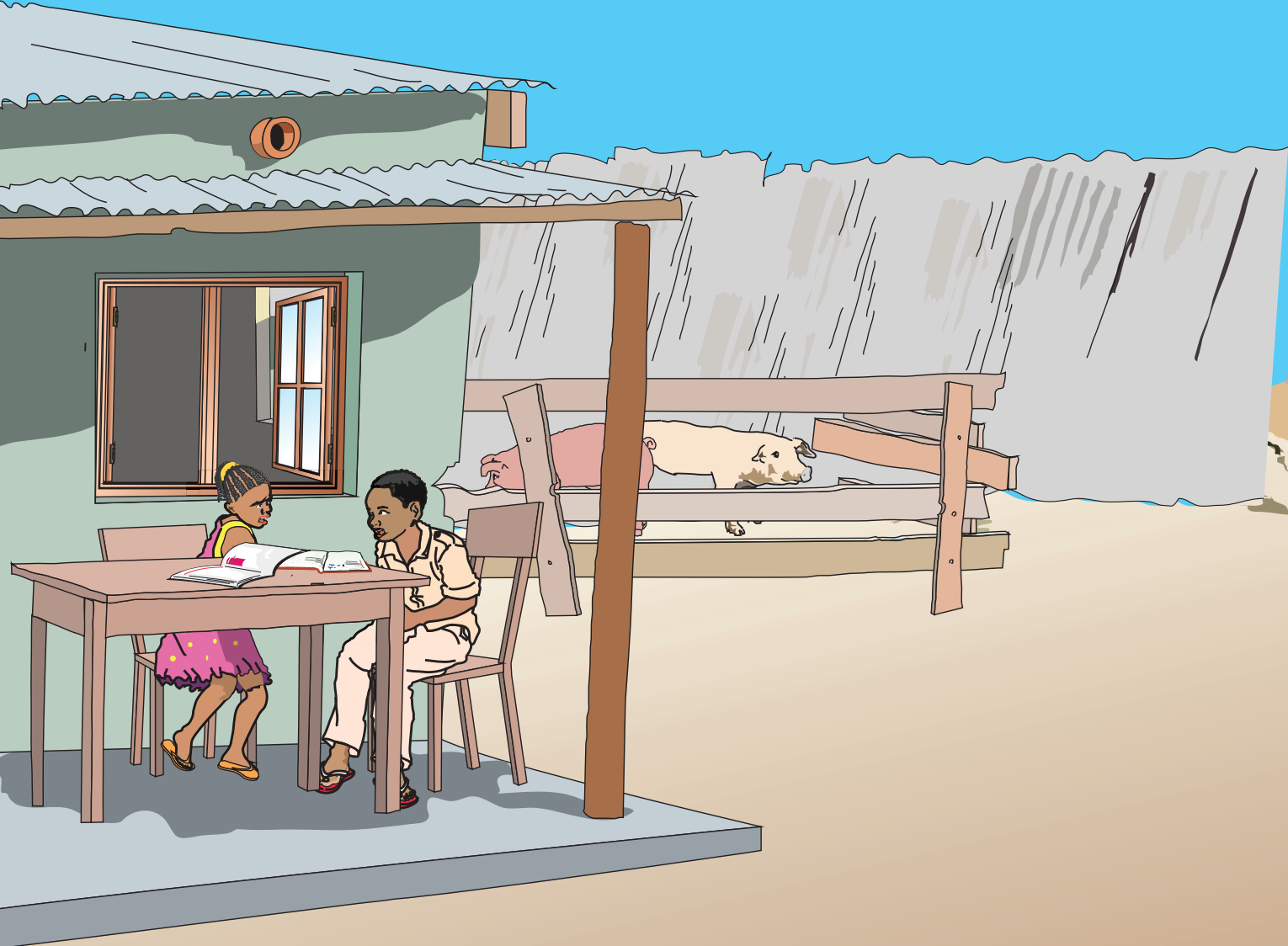
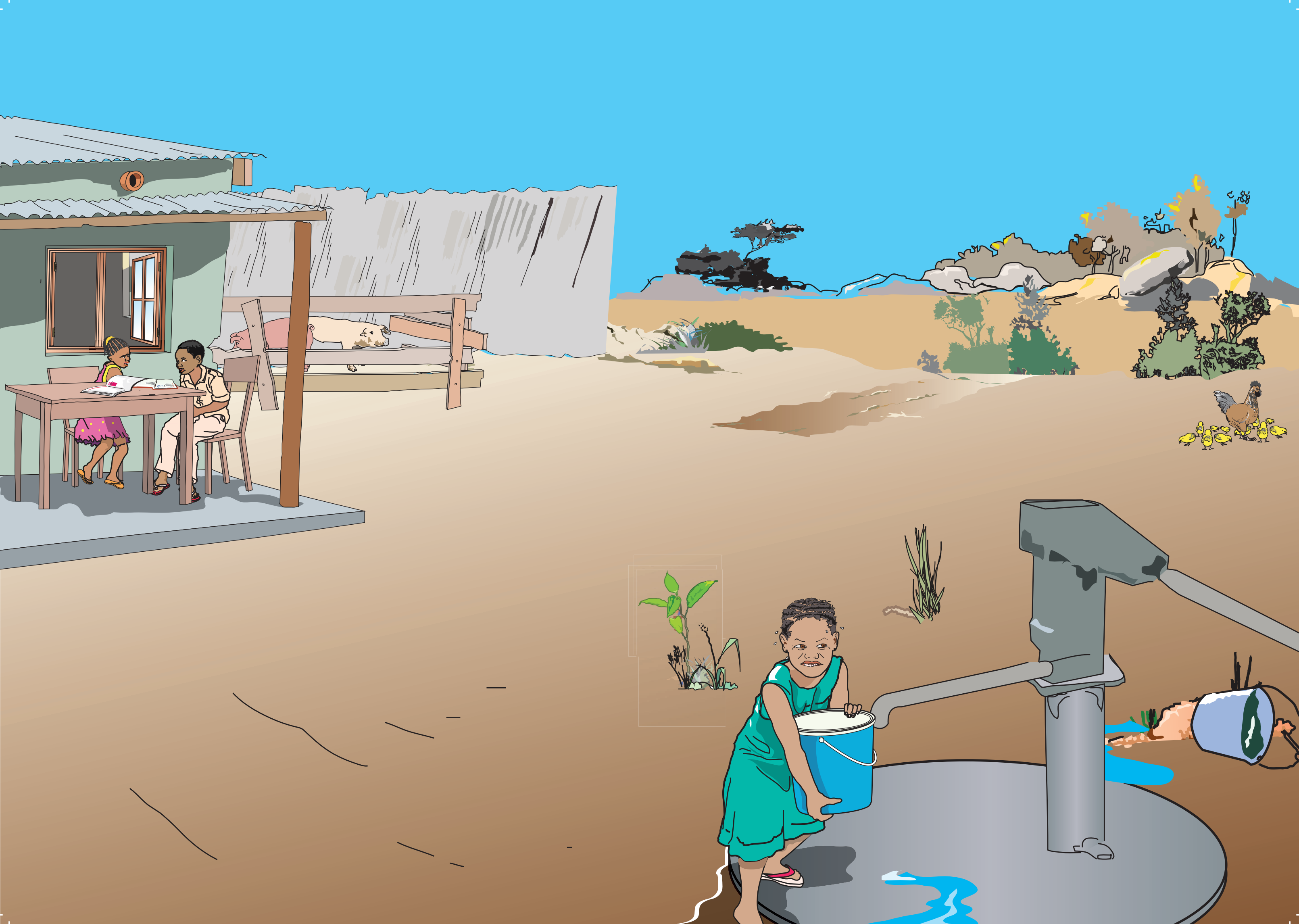




**Ommumula wa Liina hari wa phama.
Onnaphwanela ophiya oxipitale
oloca ni nfirimeera Ameeliya, wi
anvaryerye ni amuleelihe yaweera.**

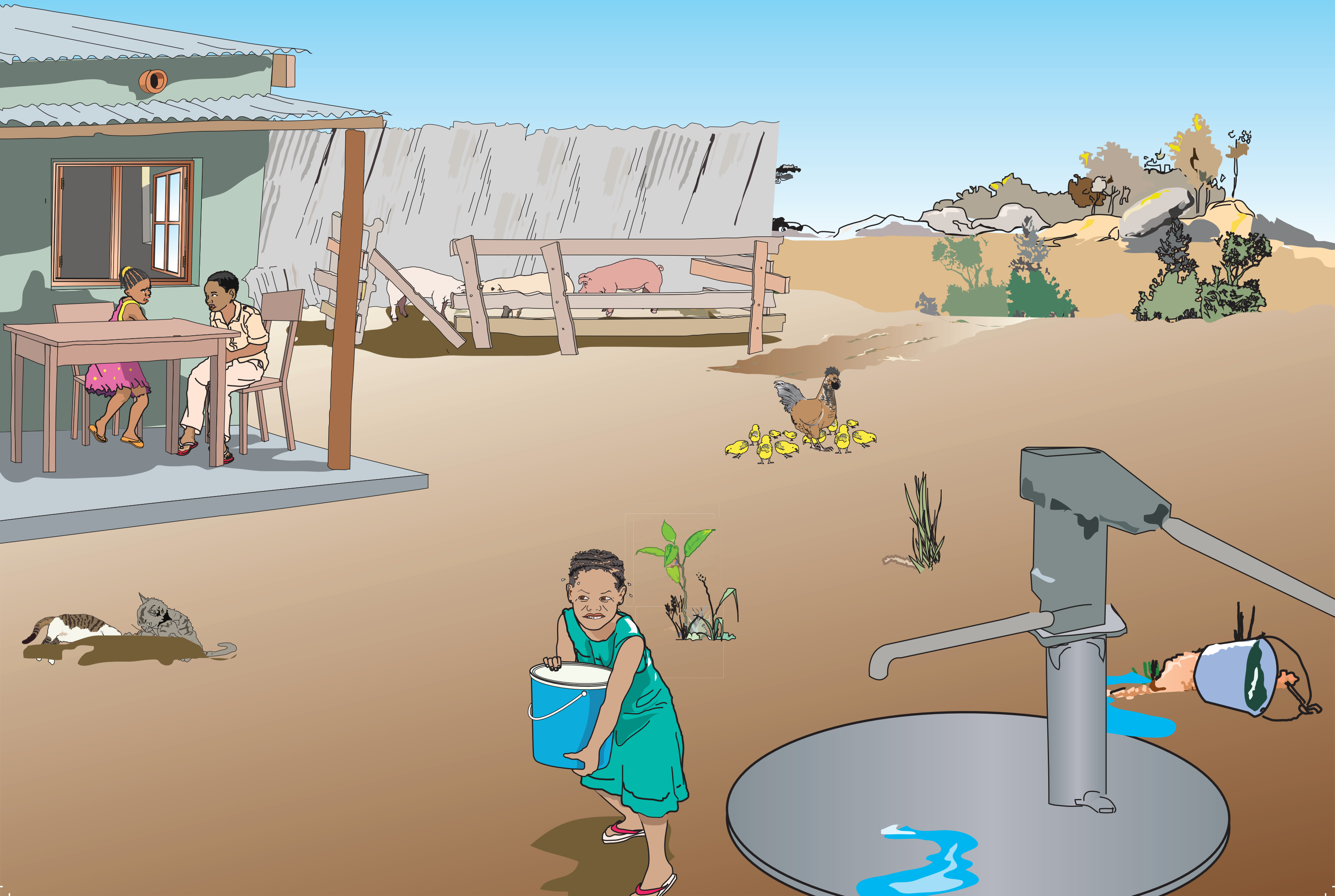


**Fernantu ni Taaniya
enamwiichuuwa.
Ale aakhala ni ekumi.**



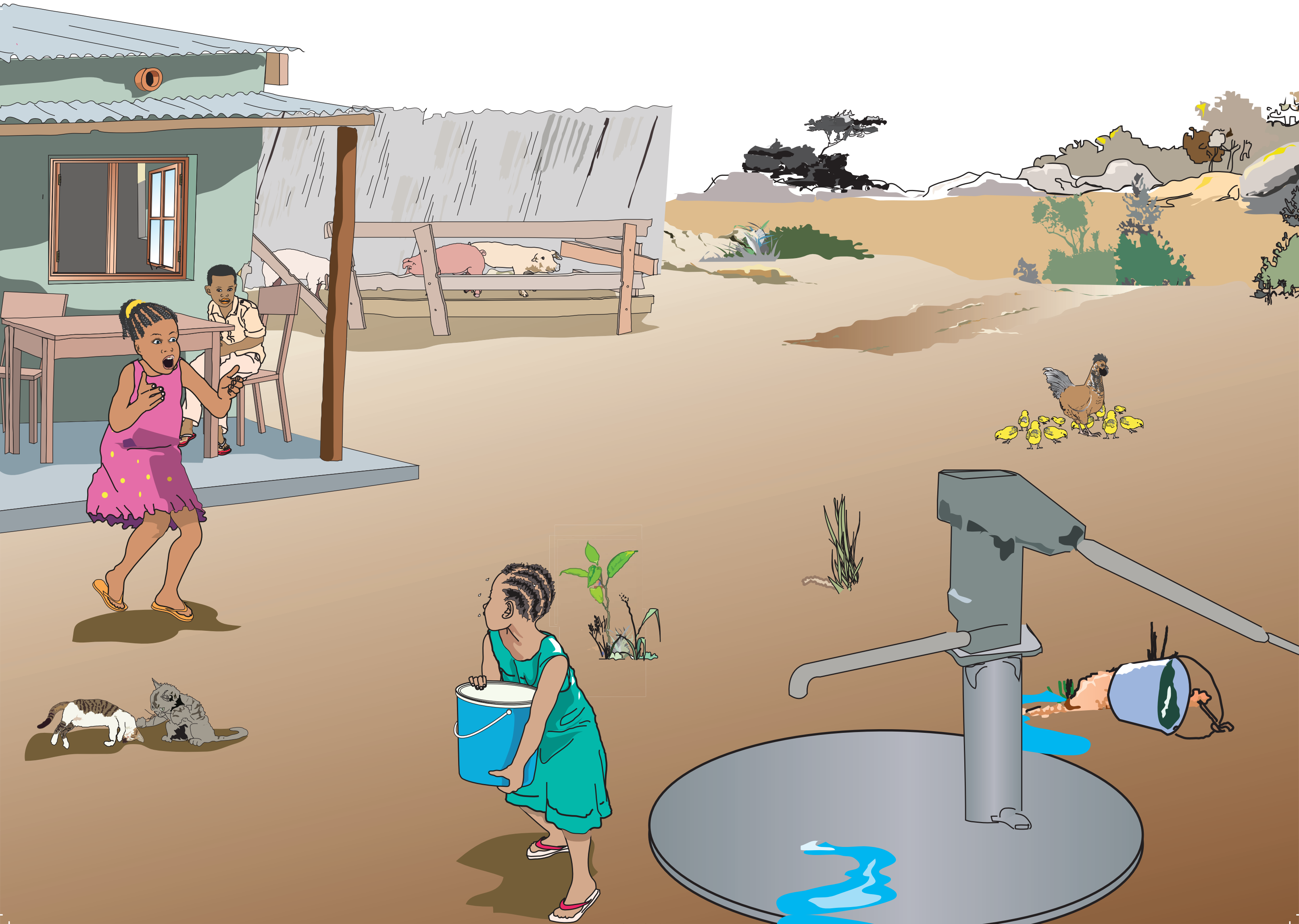
**Liina onachukula mukoro wa
maahi.**

Yene onaya oriwo amaayi awe.

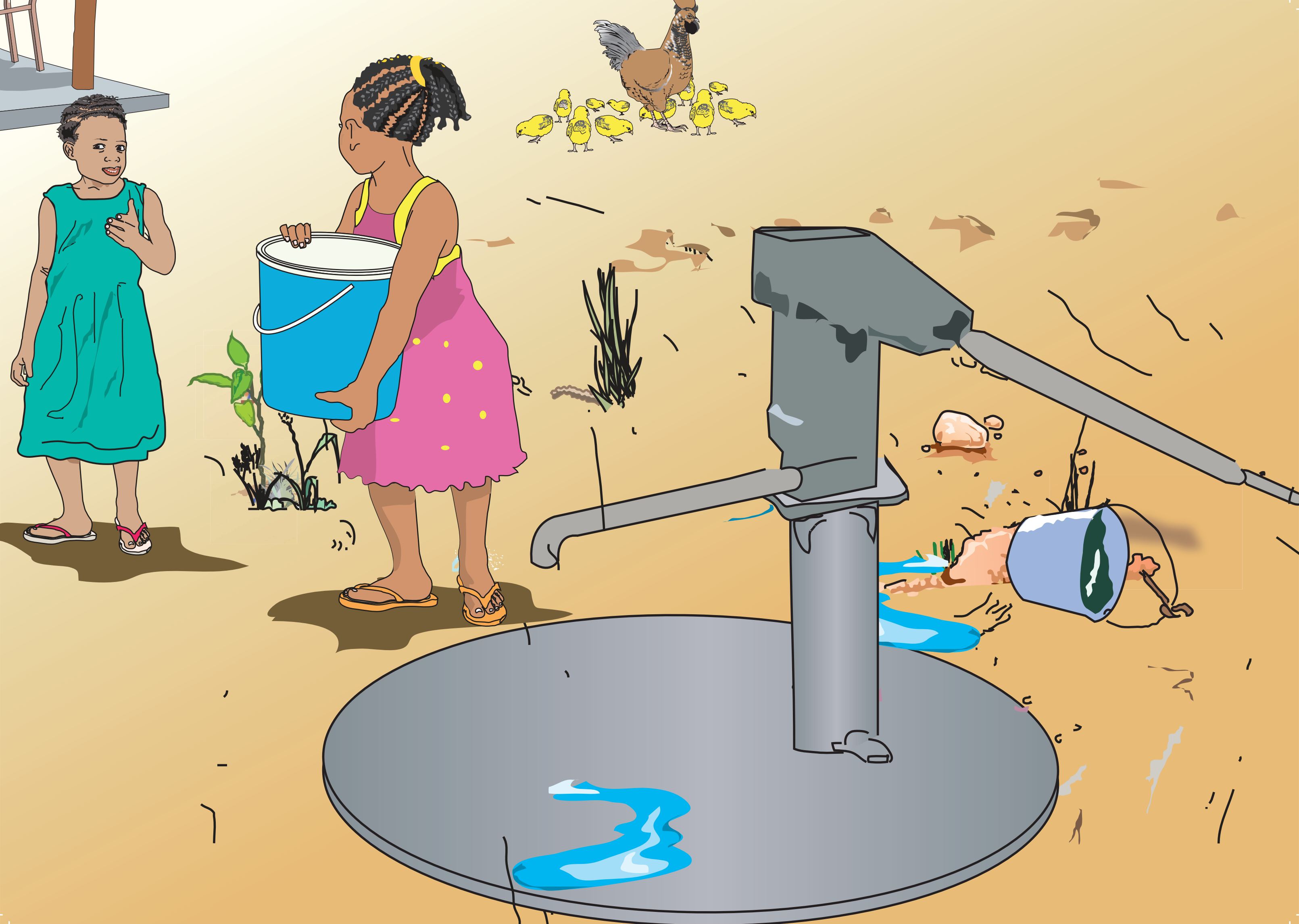


**Tiwi onnalimela, yene hanawerya
wiireya.**

Onnaveka wooroliwa ni Rosa.

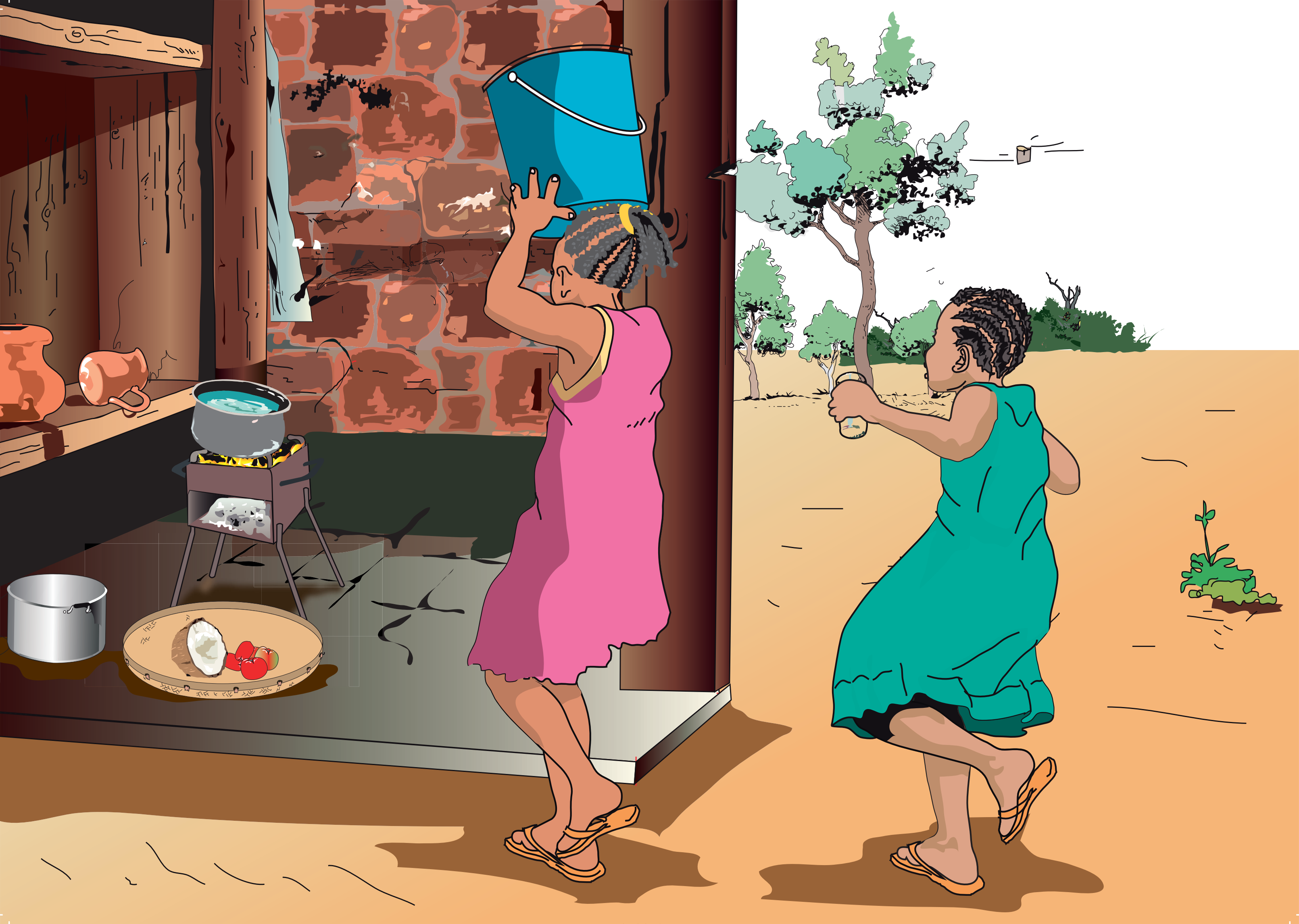


**Hanaweryatho omumula
Phameene. Nto ootitela ocukhula
mukoro yoowo.**



Taaniya omoonniye oomoorola mukoro Liina.

Rosa harwiile, yene onarapiha misiyu.



**Ohoolo waya Liina ookookela
omumula phaama.
Ohooroliwa mukoro.**



**Liina, oosiveliwa wooroliwa maahi
ni Taaniya.
Achunaka omuchara Taaniya.**



**Liina, onnanvaha mata Taaniya
moohakalala.**

