



Makhalelo ahu ni soolya

Mwenye Rawulu onikhala ni amwaara awe ni ana awe ayili.
 Owo mulopwana oorakama, oovara muteko ni oottittimiha.
 Imatta sawe suulupale ni oniruweriya soolya soovirikana.
 Soolya sawe khonimaliha olya wala othumiha sootheene.
 Owo onnikawanya mapuro mararu:
 Eyoolya yoowaapeyiwa, yootumiha ni yoowaala.
 Maama waapeyaka eyoolya onipacerya orapa ni onyawa.
 Owo onaapeela makapu ooreera ni oorapihiwa saana.
 Maama owo onivavulela eyoolya mphacene moorapihiwa.
 Paapa nto onirowa owaavya anamathuma ekhutte awe.
 Ni athumiha, paapa onirowa opasari othuma eleti ni maace.
 Paapa onithuma tho masa, asumu, enama ni ihopa.
 Masa, asumu, enama ni ihopa ovaha ekumi.
 Etthu yooreera okawanya soolya.



Mutaphulelo

Makapu - makhalako



Vano waakhule

Osome makoho ni waakhule mukateerununi

1. Mwenye Rawulu onikhala ni ani?
2. Mutthaka ola onileeliha exeeni?
3. Saruweriwa soolya sinceene owaani wawo siniirihiwa sayi?
4. Exeeni enireerelaaya okawanya soolya?

Vano osome
ni miyo



Osome ni miyo mutthaka "Makhalelo ahu ni soolya"

Vano
owiriyane



Owiriyane ni orukurerihe enirowa osoma apurusoori mukateerununi mwawo.

Onipacerya ephyo mphaceni onaapeela Epula

Onipacera epyio mphaseni onaapheela Ephula

Owiriyane ni ohimye khula nlepo na nlove:

Namakuttula

Openuxiwa

Yoowaapeyiwa



Vokapulaariyu

Omalelihe mmalakani ni amattiya nsina a mutthu anittharelana: Owo, weyo, Miyo, hiyo, ole, nyuwosa

Olelo _____ kinivela owaani waka.

_____ onitumiha soolima sawe opasari.

_____ omusivela okwesa mapuro sinikhala inama.

Vano olepe



Olepe mukateerununi mwawo, ele enirowa osoma apurusoori

Imatta sawe suulupale ni oniruwerya soolya.

Etthu yooreera okawanya soolya.

Paapa onithuma tho masa, asuumu ni enama.

Otakherye olepaka mukateerununi mwawo

Soolya sawe khonimaliha olya wala othumiha.

Paapa onirowa owaavya anamathuma ikhutte.

Maama onirowa okawanya ikhutte iyo: sa mmiso, sa olya ni sa nakoso.

Olepe woowuupuwelela mananna ookhapelela nipuwa

Vano
ocampule



Omucampule mutthu orapihaka iparatho



Orattela nipuwa

Sarayiva omusivela okwesakwesa nivate na owaani wawe.
Owo onooniherya nipuwa nawe nooreerexa muttethe awe.
Owo onneettela miyeettelo sooreeriha nipuwa ntoko ala:

- Ovela vate vaxa ni olima malaxi animelamela.
- Othipela ikokhola ni wuuheela mapuro aneemela maasi.
- Wiikitthela miri wiira sinnuweke saana ni sivaheke mihokorokho.
- Okwesa mapuro sinikhala inama.
- Oreeriha muwoorotha mwa vate.
- Wiitthela maasi miri khula nihiku.
- Opweha saana maasi aniwuriwa ni anaapeeliwa.
- Ophela miri sinuuluvala ni waala sikina isya.
- Ohela mirette miri wiira sihikhalane anaamunku.

Mikettelo iya sinnakhaliherya amusi a Sarayiva ni ekumi aya.
Oreera ottharihela mikettelo sa oratta moomusini mwahu.



Mutaphulelo

Makapu - makhalako



Vano waakhule

Osome makoho ni waakhule mukateerununi

1. Ohimye enimusivela ovara Sarayiva?
2. Mwaha wa exeeni Sarayiva oniikitthelawo miri sa mukintaali?
3. Oniiraka exeeni wiira okhaleke nipuro nooreera?
4. Exeeni enirowa onikhumelela naahirattele mapuro ankhalaahu?

Vano osome
ni miyo



Osome ni miyo mutthaka "Orattela nipuwa"

Vano
owiriyane



Owiriyane ni orukurerihe enirowa osoma apurusoori mukateerununi mwawo.

othipela orata muuttutthi ekhala otupa

otipela oratta muuthutthi okhala otupha

Owiriyane ni ohimye khula nlepo na nlove:

Onikoniwa

Esapawu

Wiikitthela



Vokapulaariyu

Omalelihe mmalakani ni malavulo anittharelana: ohela, ophwexa, okwesa, olavula, okhapelela, okhuura, othipela, Orika

Vaxa (ovela) _____ nipuwa naka ni nvelo.

Miyo kavela ikokhola (ohela) _____ mulittini.

Owo (okhapelela) _____ miri siri owaani wawe khula nihiku.



Vano olepe

Olepe mukateerununi mwawo, ele enirowa osoma apurusoori

Sarayiva omusivela okwesakwesa nivate na owaani.

- Ovela vate vaxa ni olima malaxi animelamela.

Oreera ottharihela mikettelo sa oratta moomusini.

Otakiherye olepaka mukateerununi mwawo

Opwehe saana maasi aniwuriwa ni anaapeeliwa.

Ohele mirette miri wiira sihikhalane anaamunku.

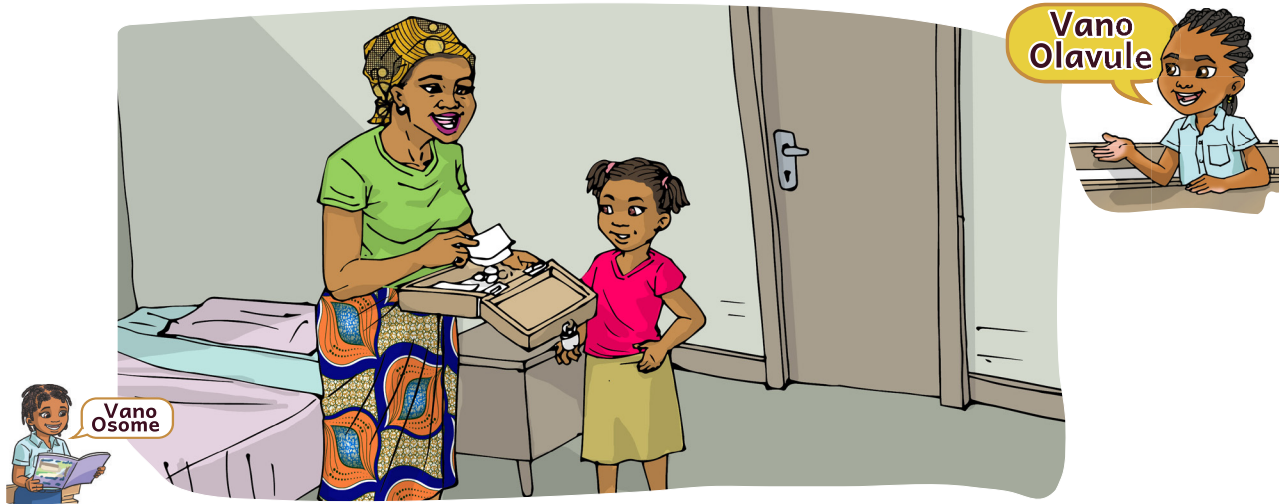
Mikettelo iya sinnakhaliherya amusi a Sarayiva.

Olepe woowupuwelela mananna a orattela ipa sahu.



Vano
ocampule

Omucampule mutthu ovelaka vate



Musuko

Mutthaka ola oninooniherya mwaha a musuko.

Ti vo, amusi awe Rukhiya anisukaaya musurukhu, soolya ni soowara.

Maama: - Mwana aka Rukhiya, kinirowa wuntakela ntikwa omatta.

- Wahala omutathe mattuvi nlatani ni omuttuule.
- Mattuvi a mmuhuponi ni mwaapuni ti a mmiso.
- Musurukhu ola wathume itephe sa ihopa opasari.

Rukhiya: - Aayo maama kinirowa opasari othuma itephe iyo.

Maama: - Musurukhu onihala opwehe saaneene mukaaxani mu!

- Ohirihe. Owo musurukhu a woosukani.

Rukhiya: - Aayo! Kinnisuwela wiira woosivelani osuka musurukhu.

Maama: - Miyo kiiraka siiso kiniwiirelani nyuwo ni axihima anyu.

- Nihiku na opacerya wa Xuunyu nookhala mwaakha ola.

Rukhiya: - Aayo maama! Siiso ni muhihyererye osuka musurukhu.

- Kiniphavela ikateerunu, ilaaphi, esaaya, epulusa ni ixinelo isya.
- Esaaya, epulusa ni ixinelo isya kiniira kiware nihiku 1 na Xuunyu.

Maama: - Aayo. Koorowa wuntakela ntikwa.



Mutaphulelo

Ntikwa - nntimini



Vano waakhule

Osome makoho ni waakhule mukateerununi

1. Muru a mutthaka ola onnileeliha exeeni?
2. Maama awe Rukhiya aalavunle exeeni ohinatthi orowa omatta?
3. Enireerela exeeni osuka musurukhu, soolya ni ikuwo?
4. Onisuka sayi musurukhu onivahiwaawo?

Vano osome
ni miyo



Osome ni miyo mutthaka "Musuko"

Vano
owiriyane



Waawiriyane apurusoori ni otthikele ohimya malove arina mpantta a nlove: khu

Musurukhu Khuvile Mukhururu Kiniphavela

Vano owiriyane ni ohimye khula nlepo na nlove:

Ntikwa

Mmuhuponi

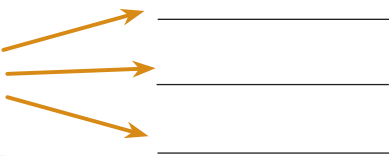
Muhihiyerere



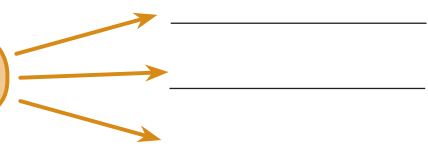
Vokapulaariyu

Omalelihe mmalakani ni omusi wa malove anittarelana:

Ekaaxa



Osuka



Vano olepe

Olepe mukateerununi mwawo, ele enirowa osoma apurusoori

Musurukhu onihala opwehe saaneene mukaaxani mu.

Miyo kिरका siiso kiniwiirelani nyuwo ni axihima anyu.

Aayo! Siiso, muhihiyererye osuka musurukhu.

Otakherye olepaka mukateerununi mwawo

Rukhiya onisuka musurukhu, soolya ni soowara.

Mattuvi a mmuhuponi ni mmwaapuni ti a mmiso.

Kiniphavela ikateerunu, ilaaphi, esaaya ni epulusa.

Olepe woowuupuwelela olavulaka mananna ookawanya ni oosuka soolya



Vano
ocampule

Omucampule mutthu osukaka ipyo mmwaapuni



Mananna oosuka musurukhu

Muttetthe wa Amulyakhu atthu annisuka musurukhu.
Iwo khonithanliwa mutthu oniphavela osuka musurukhu.

Anikhala atthu aalupale ni amwaavano, alopwana ni athiyana.
Akina anikhala anamuteko aniirela mpantta makhuru awo.

Yuulupale okhala mutthu onisuweliwa saana ni makhalelo awe.
Awo anikhala atthu oowiwanaana wiira meelo ahivelavele.

Atthu anithumiha mireerelo wiira aphwanye musurukhu.
Musurukhu onithumaniwa sooreerela, khonimalihiwa purepure.

Veeriyari va esumana khula mutthu onithola musurukhu woosuka.
Esaapatu wala nooworowa atthu ti anithukumanaaya.

Nihiku noothukumana, enniruuhiwa ekaaxa wala elaata.

Atthu anirowa akunxe ikateerunu ni ilapiseera saya.
Awo anilepa musurukhu onivahaaya nihiku ti nihiku.
Khula mmosa onivaha varinaawe oyeve wala waatte.

Atthu aniira mpantta annikopha musurukhu yoowo yaaphavelaka.
Nihiku nintthukuliwa ekaaxa, mutthu onaakhela musukhu awe ni vakhaani.
Khula mmosa nto, onnirowa othuma ele yahaaweryaawe othuma.
Etthu yooreera osuka musurukhu woona onnipuhuwa.



Mutaphulelo

Onnipuhuwa - onnincerereya



Osome makoho ni waakhule mukateerununi

1. Exeeni aniiraaya anammuttettheni a Waamulyakhu?
2. Atthu xeeni anisuka musurukhu Waamulyakhu?
3. Mwaha wa exeeni onireeraaya osuka musurukhu?
4. Ohimye mananna makina onsuwelaawo a osuka musurukhu.

Vano osome
ni miyo



Osome ni miyo mutthaka "Mananna oosuk musurukhu"

Vano
owiriyane



Waawiriyane apurusoori ni otthikele ohimya malove arina mpantta a nlove: mwaa

Amulyakhu Mwaako Mmwaapuni Malaxi

Owiriyane ni ohimye khula nlepo na nlove:

Khonithanliwa

Onithumaniwa

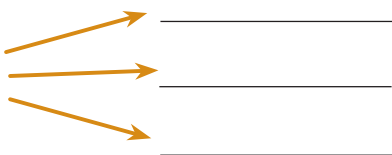
Khonimalihiwa



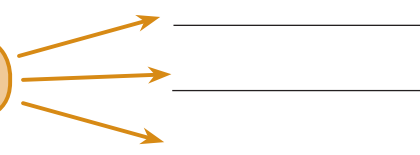
Vokapulaariyu

Omalelihe mmalakani ni omusi wa malove anittarelana:

Elaata



Othuma



Olepe woowupuwelela olavulaka mananna ookawanya ni oosuka musurukhu



Vano olepe

Olepe mukateerununi mwawo, ele enirowa osoma apurusoori

Muttetthe wa Amulyakhu atthu annisuka musurukhu.

Iwo khonithanliwa oniphavela osuka musurukhu.

Nihiku noothukumana, enniruuhiwa ekaaxa.

Otakherye olepaka mukateerununi mwawo

Awo anikhala atthu oowiwanana.

Yuulupale okhala mutthu onisuweliwa saana.

Esaapatu wala nooworowa atthu ti anithukumanaaya



Vano
ocampule

Omucampule mutthu osukaka musurukhu mukaaxa



Osyaka iretta

Mahiku ala, khasireere iretta sinaakutakutha anammawaani. Iretta seyiyu siri ntoko: koolera, nikusaku, okothomola, koronaviiru ni ikina. Hiyo, nihaana niikasopaka wiira nisyake iretta seyiya.

Nihaana orattela ovenya vapuwani mphaka mapuro makina:
- Ntoko mmaxikolani, mmaxipiritaalini ni mme ninvirakaahu.

Mmawaani mwahu nihaana nikwesaka ni nisukaka ikokhola. Iyo nihelake mukontontooroni, mmakaaxani wala mmucomani. Siiso, apulimwithi, iphepele, mantulu ni axinama akina khaninaattamela.

Namaliha orumeela esintiina, nihaana ninyawaka ni esaphawu wala ettuurya.

Nihaana tho nimuwaraka maaxikara ni ninyawaka khula okathi. Nimurumeelaka aalikoli xeeli wiira naasyake anaamunku mmatatani.

Niiratteleke wiira nihiphwaye iretta suulupale sinimalela oxipiritaali. Etthu yuulupale kahiyo owurya mirette masi osyaka iretta.

Iretta sinceene siniranvwa mwaha woohirattela mapuro ninkhalaahu. Miyo, nyuwo ni atthu ootheene nihaana nirattelaka mapuro ootheene.



Mutaphulelo

Apwilimwithi - ipwilimwithi/ichecema



Vano waakhule

Osome makoho ni waakhule mukateerununi

1. Ohimye iretta sinaaxankiha anammawaani?
2. Mananna xeeni oniittharihelaawo wiira osyake iretta?
3. Iretta xeeni sinikhumelela vanceene mmuttettheni mwawo?
4. Ohimye mananna anammuttettheni anittharihaaya wiira asyake iretta soovirikana.



Vano owiriyane ni orukurerihe enirowa osoma apurusoori mukateerununi mwawo: olya, rampha, orakama, isyo, osuka

| | | | | |
|-------|--------|---------|--------|--------|
| osuka | olyala | rhampa | ekhala | isyo |
| olya | oratta | orakama | okhala | oreera |

Owiriyane ni ohimye khula nlepo na nlove:

Okothomolasa

Mmawaani

Nimurumeeleke



Vokapulaariyu

Olepe malove oovirikana ni malove anittharelana:

Yuulupale _____; Okhuma _____.

Ohakalala _____; Yinceene _____.

Olepe woowuupuwelela mananna a osyaka iretta.



Olepe mukateerununi mwawo, ele enirowa osoma apurusoori

Mahiku ala, khasireere iretta sinnikutakutha.

Iretta seyiyi siri ntoko: koolera, nikusaku, koronaviiru.

Wamaliha orumeela exoworo, oohaana onyawaka.

Otakherye olepaka mukateerununi mwawo

Ohiniirattele, onniphwanya iretta suulupale.

Owaani wawe oohaana okwesa.

Weyo osuweleke mananna oosuka ikokhola.



Omucampule mutthu onyawaka



Mulaleyo

Anilaleyiwa anaxikola ni mapurusoori ahu ootheene wiira: Muhooleli a muttethe ola onirwa oxukurya vaxikola vahu. Muxukuryo owo ti wa nihiku 13 na mweeri wa Apiriili wa eyaakha 2019. Anivekeliwa mapurusoori ni anaxikola orwa owaakhelela. Aletto annixukurya oratteene ni mmaaleleyo exikola ahu. Awo aniphiya okathi wa iwoora thanu ni tthaaru sa voosiisu. Anitumereriwa atthu ootheene ophwanyaneya voohilokela!

Omwaanoona, mahiku 10 na mweeri wa Apiriili wa eyaakha 2019.
Muhooleli a Vaxikola
Xowakim Patiixita



Mutaphulelo

Annilaleyiwa – annilattuliwa



Vano waakhule

Osome makoho ni waakhule mukateerununi

1. Enilaleyiwa exeeni mmuttakani omanlaawo osoma?
2. Ohimwe okathi enixukurinwaaya exikola mmuttakani.
3. Othalakase miteko sinivariwa oxikola wawo jaarwa aletto?
4. Exeeni enivirikanyiha mulaleyo ni musuweliho-?

Vano osome
ni miyo



Osome ni miyo mutthaka "Mulaleyo"

Vano
owiriyane



Waawiriyane apurusoori ni otthikele ohimya malove arina mpantta a nlove: rya

Oratteene Oxukurya ootheene tthaarwu eryawe

Owiriyane ni ohimye khula nlepo na nlove:

Muxukuryo

Omwaanoona



Vokapulaariyu

Okawanye moolumo wooniheryaka mpantta wa nlavulo ni mpantta wa nsina

Aletto annixukurya vaxikola.

Muhooleli a muttethe onixukurya exikola.

Olepe woowupuwelela olavulaka mulaleyo wa ohuliwa exikola



Vano olepe

Olepe mukateerununi mwawo, ele enirowa osoma apurusoori

Muhooleli a muttethe ola onirwa oxukurya vaxikola vahu.

Anitumereriwa atthu ootheene ophwanyaneya voohilokela!

Otakherye olepaka mukateerununi mwawo

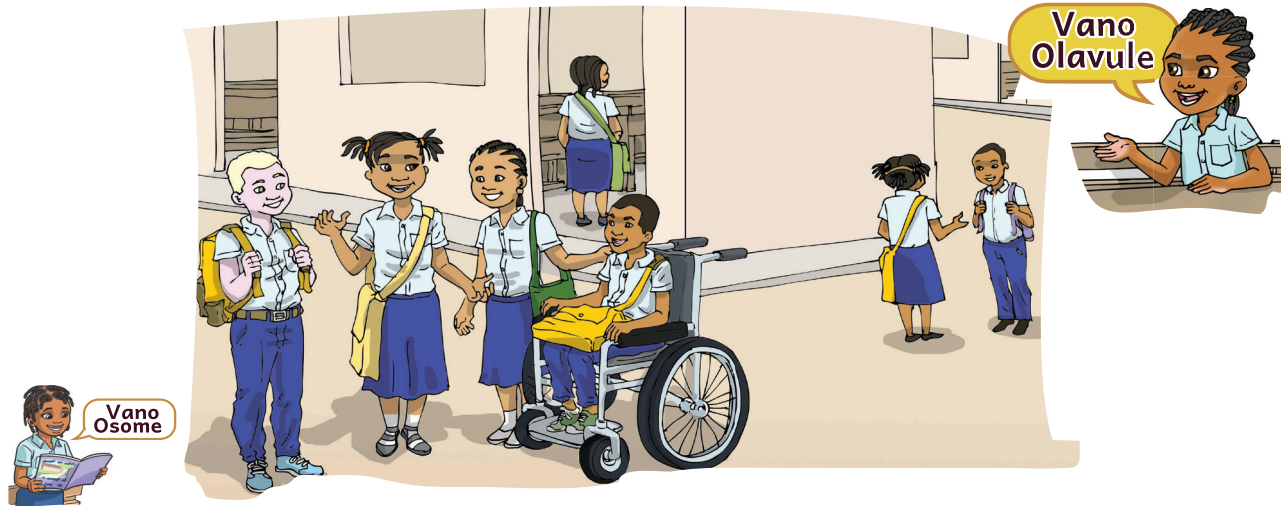
Muxukuryo owo ti wa nihiku 13 na mweeri wa Apiriili wa eyaakha ya 2019.

Awo aniphiya okathi wa iwoora thanu ni tthaarwu sa voosiisu.



Vano
ocampule

Ocampule exikola awo



Mananna ookhala oxikola

Osuluheya onnoonaneya khula nipuro ni khula okathi.

Osuluheya iwo onooniheriwa ni murima ahu ni akhwa ahu.

Haliima ni Filipi anivaanela makhalelo aya oxikola yiiraka:

Haliima: - Miyo kapisa ovolowa musaala kiniira:

- Koovara metto apurusoori, kiniphavela ovolowa kisome.
- Okathi mukina kiniira hooti, kiswaamihiwe, kiniphavela osoma.
- Apurusoori yakaakhula kiniira, kooxukhuru apurusoori.

Ankhi nyuwo Filipi munikhala sayi oxikola?

Filipi: - Miyo kinoopeherya kittharelaka okathi wa osoma.

- Kinnikuxa ikaruma sa akhwa aka kihoolale.
- kinnaaveyiha anaxikola akhwa aka.
- Miyo kanamasuwelexa musaala mwa aka.

Haliima: - Phoole Filipi! phoole!

- Muhivare ikaruma sa akha anyu mpakha weemereriwa.
- Musyake waaveyiha anaxikola akhwa anyu.
- Muhiikhalihe namasuwelexa musaala mwanyu.

Ala mananna a okhala oxikola ni mapuro makina.



Mutaphulelo

Osuluheya – oleleya



Vano waakhule

Osome makoho ni waakhule mukateerununi

1. Exeeni enooniherya osuluheya?
2. Mananna xeeni a okhala oxikola ni mapuro makina Haliima oolavunlyaawe? oxikola?
3. Makhalelo xeeni oosuluheya onittharihaawo khula nihiku oxikola?
4. Onilavulaka exeeni ni axaapara awo wiira asuluheyeke.

Vano osome
ni miyo



Osome ni miyo mutthaka "Mananna ookhala oxikola"

Vano
owiriyane



Waawiriyane apurusoori ni otthikele ohimya malove arina mpantta a nlove: tho

oviha oviliwa othowa
owaawa otokhora ephareya

Owiriyane ni ohimye khula nlepo na nlove:

Kooxukhuru

Musyake



Vokapulaariyu

Omuhimye Namwiira, Mwiiraneyo ni Mwiireliwo mmoolumoni

Haliima oniphavela ovolowa musaala.

Filipi onisoma ekalaase ya neexexe.

Olepe woowuupuwelela makhalelo awo oxikola



Olepe mukateerununi mwawo, ele enirowa osoma apurusoori

Haliima ni Filipi anivaanela makhalelo aya oxikola.

Miyo kinnipeherya kittharelaka okathi wa osoma.

Otakherye olepaka mukateerununi mwawo

Osuluherya onooniherya ni murima ahu ni akhwa ahu.

Koovara metto apurusoori, kiniphavela ovolowa kisome.



Omucampule naxikola orowaka oxikola



Vano Osome



Vano Olavule

Mooniheryo wa oxukurya wa ahooleli a muttethe

Exikola Pirimaariya Yuulupale ya Omasikati.

Olelo, nihiku 22 na mweeri wa Xaneero wa eyaakha 2021, niri ni aletto. Ola okathi wa iwoora ithanu ni ixexe ni awo ari musaala wa muhooleli. Nto ahooleli a muttethe anixukurya exikola. Awo anisuwela mananna exikola enireheryaaya isaame sa mitano. Muthukumano ohooleliwe ni mukhulupale a exikola. Aniphwanyaneya ahooleli otheene a muttethe ni a exikola. Muhooleli a vaxikola onisuweliha muteko arun'ye ovara ahooleli ale. Siiso, awo anooniherya iliixita sa anaxikola anirowa wiira isaame. Awo anooniherya tho, isaala, osakarataria ni nipuwa attottopeliwaka. Anoottopeliwa okhala wiira vaxikola vari vooreera. Woomalani amuhoooleli annixukhuru oxukuriwa exikola. Atokweene anooleyihya ni anihimya wiira anooxukurya mahiku makina.

Omasikati, nihiku 22 na mweeri wa Xaneero wa 2021

Muhoooleli a nikuru na oxikola

Rotiriki Rawulu Watekwa

Rotiriki Rawulu Watekwa

Namalepa

Akoxitiinyu Perenaartu Kiriiva

Akoxitiinyu Perenaartu Kiriiva



Vano waakhule

Osome makoho ni waakhule mukateerununi

1. Exikola xeeni yaakheliwe aletto?
2. Waahimye atthu aniphwanyaneya omuthukumanoni onilavuliwa mmutthakani?
3. Waahimye atthu aniira mpantta exikola enisoma awo?
4. Muteko xeeni onivaraaya amuhoooleli a exikola?

Vano osome
ni miyo



Osome ni miyo mutthaka "Mooniheryo wa oxukurya wa ahooleli muttethe"

Vano
owiriyane



Waawiriyane apurusoori ni otthikele ohimya malove arina mpantta a nlove: tte

Oteka Otteela

Mtthekeo Muttetthe

Owiriyane ni osome khula nlepo na nlove:

Muhooleli Eliixita

Mananna Ootheene



Vokapulaariyu

Olepe malove oovirikana ni ala anittharelana:

Yuulupale _____ Yinceene _____

Okhuma _____ Ohakalala _____

Olepe woowupuwelela ohimaka makhalelo a oxikola.



Olepe mukateerununi mwawo, ele enirowa osoma apurusoori

Ola okathi wa iwoora thanu ni ixexe.

Nto ahooleli a muttethe anixukurya exikola.

Muthukumano ohooleliwe ni mukhulupale a exikola.

Awo anooniherya tho isaala.

Otakherye olepaka mukateerununi mwawo

Awo anisuwela mananna enireheriwaaya exikola.

Muthukumano ohooleliwe ni mukhulupale a exikola.

Siiso, awo anooniherya iliixita sa anaxikola.

Woomalani amuhooleli annixukhuru oxukhuriwa.



Ocampule eroroco wooniheryaka ewoora enivolowiwa oxikola

Miyettelo sa Vaxikola

Samira ni Tawanxa ari oxikola

Awo anivaanyihana miyettelo sa oxikola.



Vano Osome

Oxikola kinaakhomasa apurusoori ni akhwa aka:
-Murettele apurusoori, murettele anaxikola.
Ankhi nyuwo Tawanxa, munikhala sayi oxikola?



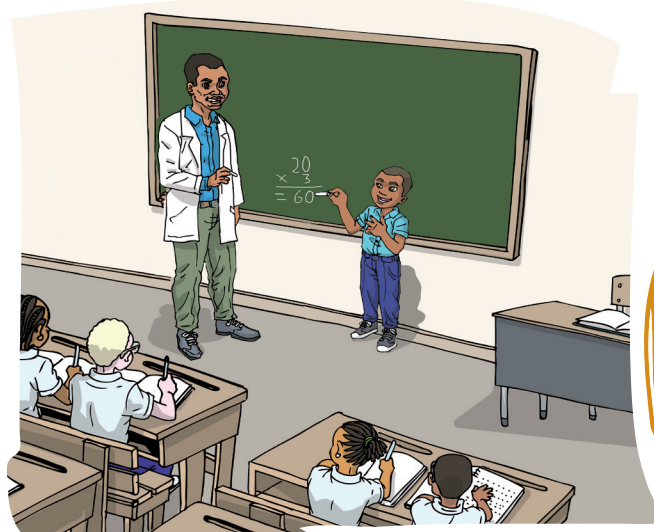
Vano Olavule



- Humm, apurusoori anivaanela ni miyo olelo.
- Muvaanelo owo ti owelawela ikhukulu.
- Ohiya vo, owaani nkipanke muteko wa oxikola.
- Vano kiireke sayi wiira apurusoori akilevelele?



-Mwaavekele apurusoori ni anaxikola yoswaamiheni.
- Muvekele waakhula muteko ola wa owaani vanipaweni
- Muhinaliyala opaka muteko wa owaani. Oleeliha miruku oreera vanceene



Mutaphulelo

Yooswaamiheni - yooleveleleni



Vano waakhule

Osome makoho ni waakhule mukateerununi

1. Ti avi antthu-piitthu a mutthaka ola?
2. Anirasa exeeni Samira ni Tawanxa?
3. Ohimye miteko sa woosivelani oxikola.
4. Mureerelo xeeni orinaaya opaka muteko wa ovara owaani?

Vano osome
ni miyo



Osome ni miyo mutthaka "Miyeettelo sa Vaxikola"

Vano
owiriyane



Waawiriyane apurusoori ni otthikele ohimya malove arina mpantta a nlove: -cee-

Munceene Oceka

Epuruseera Sekhera

Owiriyane ni osome khula nlepo na nlove:

Tawanxa Yooleveleleni

Muvaanelo Murettele



Vokapulaariyu

Olepe malove oovirikana ni ala anittharelana:

Ooratta _____ Okhuma _____

Ooreera _____ Okela _____

Olepe woowuupuwelela inumana ya opaka muteko wa owaani.



Vano olepe

Olepe mukateerununi mwawo, ele enirowa osoma apurusoori

Samira ni Tawanxa ari oxikola.

Awo anivaanyihana miyeettelo sa oxikola.

Murettele apurusoori, murettele anaxikola.

Muvaanelo owo ti oowelawela ikhukulu.

Otakherye olepaka mukateerununi mwawo

Humm, apurusoori anivaanela ni miyo olelo.

Muvaanelo owo ti oowelawela ikhukulu.

Ohiya vo, nkipanke muteko wookikola owaani.

Vano, kiireke sayi wiira apurusoori akilevelele?



Vano
ocampule

Ocampule eroroco yooniheryaka ewoora enimwareyiwa oxikola



Oreherya mixinttano oxikola

Mixinttano winnuwiha musuwelo. Ohiya vo, mixinttano sinnikhoomaliha ni sinnivaha ekumi voomahala.

Iyo seettiwaka sinnilipiherya makhalelo a osuwela ni a ophentana. Vano, iyo sinireheriwa sayi wiira siiraneye?

Vannireerela otthara meettelo ala:

- Opaka muupuwelo a muxinttano;
- Otthariha makhalelo a muxinttano;
- Wooniherya meetteliwo ni maloleliwo aya muxinttano;
- Olaleya oxikola meetteliwo ni maloleliwo aya muxinttano;
- Waavekela anamakhalani okhaliherya ni itthuvo;
- Oleeliha itthuvo sa anamalola ni anamaloliwa;
- Opaka iliixita sa anaxikola aniira mpantta wa muxinttano;
- Othanla nipuro ninrowa wiiraneya muxinttano owo.
- Othanla ituuruma sa ekalaase emosaru.

Mixinttano ephiro ya osoma ni ekumi ya akhili.



Osome makoho ni waakhule mukateerununi

1. Efayita xeeni orinaaya muxinttano?
2. Itthuvo xeeni sinivahiwa alipa oolola muxinttano?
3. Ohimye mixinttano sikina onisuwelaawo.
4. Mixinttano xeeni onipakakaawo oxikola?

Vano osome
ni miyo



Osome ni miyo mutthaka "Oreherya mixinttano oxikola"

Vano
owiriyane



Owiriyane ni orukurerihe enirowa osoma apurusoori mukateerununi mwawo: oriipa, omaala, oviha, oriirya, otteela, wona

| | | | | |
|-------|---------|---------|--------|---------|
| oviha | oriipa | rampa | omaala | isyo |
| olya | otteela | orakama | woona | oriirya |

Owiriyane ni ohimye khula nlepo na nlove:

Mixinttano Anaxikola



Vokapulaariyu

Olepe malove oovirikana ni ala anittharelana:

Oxintta _____ Oloka _____

Hooye _____

Olepe woowupuwelela ohimyakasaka isepwere sinaasivela anaxikola akwaawo



Olepe mukateerununi mwawo, ele enirowa osoma apurusoori

Mixinttano winnuwiha musuwelo.

Mixinttano ephiro ya osoma ni ekumi ya akhili.

Otakiherye olepaka mukateerununi mwawo

Vano, iyo sinireheriwa sayi wiira siiraneye?

Wooniheryaka meetteliwo ni maloleliwo aya muxinttano.



Ocampule nipuwa nnittikhiwa mphira



Muxinttaano wa mphira

Apurusoori anireherya muxinttano wa mphira oxikola. Nono muhooleli a miteko sa mphira musaala mwawe. Ni tho Ana onihoolela miteko seyiyu musaala mwawe.

Oowayili aya ari ekalaase ya neexexe masi ituuruma soovirikana. Awosa anileyihana oxinttana ituuruma saya esaapatu.

Nono - Exeeni enireerela wiira sixinttane ituuruma sahu?

Ana - Nikhalane mphira, anamphira ni ikuwo sa anamphira.

- Nyuwo munuupuwela wiira eniireerela exeeni tho?

Nono - Nikhalane afaatu, mphira ni anamakhaliherya a itthuvo.

Ana - Anamphira ti avi anirowa wiira mpantta?

Nono - Anamphira ene ti hiyo ni anaxikola akina.

- Nave nihaana orapa ni omumula namaliha ottikha.

Ni omala ovaanela, awosa anirowa olavula ni mapurisoori aya. Mapurisoori animwaakhulela ni anilavula ni amuhoooleli mwaha yoole.

Awo anithuma ikaruma seyiyu wiira esaapatu oxinttaniwe. Esaapatu ituuruma iye sinamuttikha mphira.

Etuuruma ya Ana yooxintta mphira miraru ni miili.

Muhoooleli otthuvela ikateerunu nikhuru na Nono. Nikhuru na Ana otthuvela ikateerunu ni ilapiseera.



Mutaphulelo

Anileyihana - anivarihana



Osome makoho ni waakhule mukateerununi

1. Ti ani anireherya muxinttano wa mphira oxikola?
2. Nono ni Ana anileyihana exeeni?
3. Vanireerela exeeni ovahiwa etthuvo wamala muxinttano?
4. Mixinttano xeeni sikina sinipakiwa oxikola wawo?

Vano osome
ni miyo



Osome ni miyo mutthaka "Muxinttano wa mphira"

Vano
owiriyane



Waawiriyane apurusoori ni otthikele ohimya malove arina mpantta a nlove: lu

| | |
|-------------|-----------|
| Ooveya | oowunnuwa |
| oowuuluvala | mpatthani |
| mwaapara | muulupale |

Owiriyane ni ohimye khula nlepo na nlove:

Anileyihana
Anivarihana



Vokapulaariyu

Olepe malove oovirikana ni ala anittharelana:

Onanara _____

Yaamukhaani _____

Yooveya _____

Olepe woowuupuwelela ohimyakasaka mixinttano sa oxikola wawo



Vano olepe

Olepe mukateerununi mwawo, ele enirowa osoma apurusoori

Apurusoori anireherya muxinttano wa mphira oxikola.

Oowayili aya ari ekalaase ya neexexe masi ituuruma soovirikana.

Otakihe Vano otakiherye olepaka mukateerununi mwawo rye olepaka mukateerununi mwawo

Nono muhooleli a miteko sa mphira musaala mwawe.

Nave nihaana orapa ni omumula nammaliha omuttikha mphira.



Vano
ocampule

Omucampule mphira



Exikola yoothanleleya

Exikola nipuro anamwane wala atthu aalupale anixuttaaya emutthu ni mananna ooreera otthara.

Nipuro nootepa ophentiwa ni atthu otheene okhala wiira atthu awo aavira ni aasoma oxikola.

Siiso, ixikola sootheene sookhalana mapuro anipateyaaya mitthaka wala mihupi saya suulupale.

Atokweene a muttethe ari exikola ni ahooleli a anaxikola annirowa oxukurya exikola aya. Ohiya atokweene a exikola, eyo yookhalana nave ahooleli aya ari atiretoore ni akhulupale akina.

Awo annilattula muthukumano wa mapirisoore ni wa anammuttettheni wiira alavule myaha sa exikola.

Naxikola onirowa osoma ni ikaruma sa oxikola, iliivuru, ikateerunu, elaapiseera wala elaapi ni ettikittho.

Iliivuru ni ikateerunu sikhaleke soowemkapariwa wiira anaxikola a mwaakha onirwa asomele seyiyo.

Vaaweryaneya anaxikola ootheeneya atthuna okhalaka murupa woopweha ikaruma saya on'wara unifoorme.

Exikola ekhalaneke nipuwa na mphira, mphira ni ikaruma sikina anaxikola ni mapirisoore sinirumeelaaya.

Nave naxikola ohaana weetta ooreera owaani ni oxikola ni wiivaha okathi woosoma oxikola ni owaani.

Naxikola onittharihela miruku iya ti orina owerya woosutta onittototopeleya owaani, oxikola ni mmuttettheni.



Mutaphulelo

Anipateyaaya – anipareyaaya/anipharaaya



Osome makoho ni waakhule mukateerununi

1. Ti ani anixukurya exikola?
2. Waahimye atthu aniholela exikola awo.
3. Muteko xeeni nnivaraaya nikhuru niholela exikola awo?
4. Weyo onikhapelela sayi iliivuru sawo?



Oluttanihe ni anamalikanxa:

- i. Murupa wa naxikola ti yooreera
- ii. Nipuwa na mphira wooripa
- iii. Ekaateerunu ya naxikola ti nuulupale

Owiriyane ni ohimye khula nlepo na nlove:

Ophentiwa Muthukumano



Omalelihe nipawe ni malove anihimya soovirikana

| | |
|-----------|--|
| Oreera | |
| Ovolowa | |
| Yuulupale | |
| Oveya | |



Olepe mukateerununi mwawo, ele enirowa osoma apurusoori

Exikola nipuro anamwane aniixuttaaya emutthu ni mananna ooreera otthara.

Ixikola sootheene sookhalana mapuro anipateyaaya mitthaka.

Otakiherye olepaka mukateerununi mwawo

Exikola yookhalana nipuwa na mphira.

Naxikola oohaana weetta ooreera owaani ni oxikola.

Naxikola onikuxa eliivuru, ikateerunu, elaapiseera, elaapi ni ettikittho.

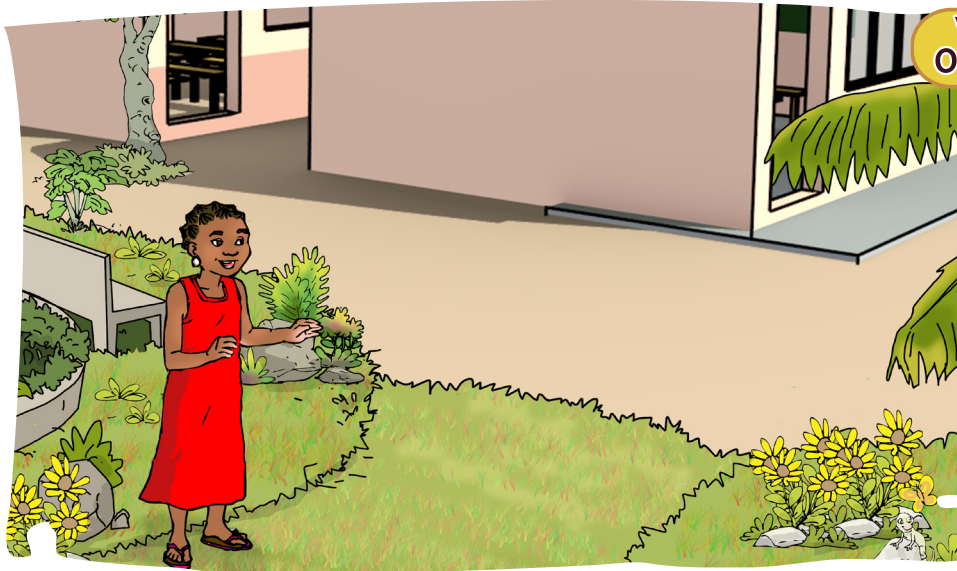
Olepe woowupuwelela olavulaka exikola awo

Owiriyane ni orukurerye malove arina nsu noolikana woopaceryani, eriyari ni woomalelani.

| Malove oolikana nsu woopaceryani | Malove oolikana nsu eriyari | Malove oolikana nsu woomalelani |
|----------------------------------|-----------------------------|---------------------------------|
| owaani | woosoma | osome |
| Ikaruma | aasoma | atokweene |
| Ohiya | ikateerunu | sootheene |



Ocampule exoworo ya athiyana ni exoworo ya alopwana



Orattela exikola

Exikola nipuro nuulupale vanithukumana atthu wiira asome. Wiira anaxikola awo akhalane ekumi, aahaana okhala aratti. Onikhaliwa sayi muratti? Muratti onikhala ntoko sa:

- Okwesa vaxikola vootheene ni okhupa ikokhola sootheene.
- Otthipela ikokhola ni wuuheela malitti.
- Orattela saaneene ixoworo suulupale ni ixoworo sikhaani.
- Onyawa mwaavolowaka ni mwakhumaka oxoworo.
- Opuputtha ikhukulu soonanara ni ekuwo yonaana.
- Onyawa saaneene ni maasi ooreera ni esapawu wala ettuurwa;
- Orapa mwaphiya owaani.

Orattela vaxikola ovaha ekumi.



Mutaphulelo

Opuputtha - otatha

Ikhukulu - ipanko, ikhatera



Osome makoho ni waakhule mukateerununi

1. Ohimye muru wa mutthaka omanlaawo osoma?
2. Eniratteliwa sayi exikola awo?
3. Exeeni oniirakaawo khula nihiku wiira orowe oxikola ooreera?
4. Atthu a mmuttettheni mwawo aniiraka exeeni wiira akhalane ekumi?

Vano osome
ni miyo



Osome ni miyo mutthaka "Orattela exikola"

Vano
owiriyane



Owiriyane malove ari vakarataawuni (othipela, orattela, onyawa, okwesa), ni othoonye nle nrina mpantta na nlove: thi, tte, nya, kwe
Ooveya oowunnuwa

oowuuluvala mpatthani

mwaapara muulupale

Owiriyane ni ohimye khula nlepo na nlove:

Opuputtha

Ikhukulu



Vokapulaariyu

Omalelihe mmalakani ni mananna a nlavulo orumeelaka okathi okathi wa naanaano

Miyo (osoma) _____ ekalaase ya neexexe.

Xowaana (ovela) _____ vaxikola.

Olepe woowupuwelela ohimyakasaka muteko wa khula ekaruma ya oratteliha exikola



Vano olepe

Olepe mukateerununi mwawo, ele enirowa osoma apurusoori

Othipela ikokhola ni wuuheela malitti.

Orapa mwaphiya owaani.

Otakherye olepaka mukateerununi mwawo

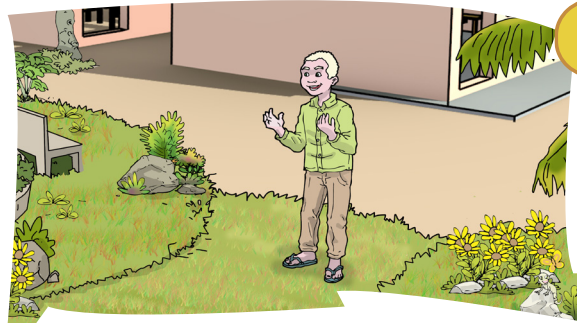
Exikola nipuro nuulupale vanithukumana atthu wiira asome.

Okwesa vaxikola vootheene ni okhupa ikokhola sootheene.



Vano
ocampule

Waacampule anaxikola akwesaka vaxikola



Exikola ahu yooreera

Olelo Amina ni Maliki anirowa orattela exikola aya. Awo anivarela ihipa ni mivelu.

Vano va, anivaanela mwaha yoowo wa orattela exikola:

Amina - Maliki, nkireere otteeliwa murima.

Maliki - Mwaha wa xeeni?

Amina - Oh, woolihala? Ninrowa orattela exikola ahu.

Maliki - Hooye. Nkiliyanle. Haya, nirowe naakuve.

Aminani Maliki anarowa oxikola. Vaphin'yaaya oxikola, Amina aanithamala iiraka:

Amina - Haaa, anaxikola akhwa ihu khareere wiiraana! Akina anireeriha isaala, akina ixooworo ni akina vate.

Maliki - Vano hiyo noopisa ophiya! Nivareke exeeni?

Amina - Nirowe nikhupeke ikokhola iya ni isaakho. Ikokhola oruuha iretta sinceene.

Maliki - Aayo. Nave niittheleke mulittini ni nuhuweeleke. Olelo nto, khaavo ohinvara muteko wiira exikola ereere.

Axipaapa ni aximaama ahoorwa oratela exikola. Orattela exikola mooniheryo ahu mulaponi.

Ni woomalela muteko ole, anaxikola anihiya exikola yaaryaka. Awo anoonyawasa ni animwiipa arowaka owaani.

Nirattele exikola ahu ni mapuro ootheene anikhala ahu.



Mutaphulelo

Hooye - Nnaari/meena



Osome makoho ni waakhule mukateerununi

1. Waahimye antthu-piitthu anilavuliwa muhantisini omanlaawo osoma?
2. Amina ni Maliki anirowa wiira exeeni oxikola?
3. Axipaapa ni aximaama anikhaliherya sayi oxikola wawo?
4. Weyo onaakhaliherya sayi axipaapa awo wiira okhaleke nipuro nooratteleya?

Vano osome
ni miyo



Osome ni miyo mutthaka "Exikola ahu yooreera"

Vano
owiriyane



Owiriyane malove ari vakarataawuni (okilaathi, Maliki, vasulu, vakhiviru), ni othoonye nle nrina mpantta na nlove: ki, li, va, khi

Ooveya oowunnuwa

oowuuluvala mpatthani

mwaapara muulupale

Owiriyane ni ohimye khula nlepo na nlove:

Ootheene

Orattela



Vokapulaariyu

Omalelihe mmalakani ni anamasuweliha okathi anittharelana: mwaahiyu, olelo, murotto, nsuri

_____ Amina ni Maliki yaahrowasa orattela exikola aya.

Awo _____ anivarela ihipa ni mivelu.

Olepe woowupuwelela ohimyakasaka inamuna onirattelaawo exikola awo

Vano olepe



Olepe mukateerununi mwawo, ele enirowa osoma apurusoori

Awo anivarela ihipa ni mivelu.

Maliki, nkireere otteeliwa murima.

Otakherye olepaka mukateerununi mwawo

Ninrowa orattela exikola ahu.

Ikokhola oruuha iretta sinceene.

Vano
ocampule



Ocampule exikola yooreera

Osyaka iretta musaala

Amina ni Filipi anaxikola ooleeleya ni aniphavela osyaka iretta sinivaliwa musaala mwaaya.

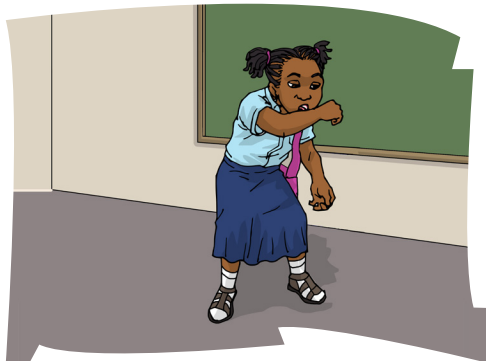
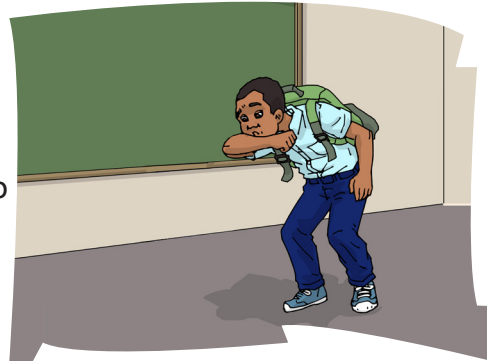
Iretta iyo okothomola ni ovyaluwasa

Vano Olavule



Amina – Filipi, exeeni olokela ophiya oxikola? Olelo ninsoma wiikasopa iretta sinivaliwa musaala mwahu.

Miyo nkikhanle saana mweerutthuni mwaaka. Okineena vammilo. Xontte, mukivahe maasi awo mpotirini mmo kiwurye.



Khula naxikola orwaaneke maasi awe mwamupootirini mooreera. Mpuwa ntoko mu nihinaviravira wala waattamelana. Nikothomoleleke veekookhunoni ni nittiyenlene iyano ni ekuwo.

Aayo Amina. Miyo kihiiwa ni kookupali! Kinakilaathi vamunyukhuni vaka va. Nihaana onyawa ni owurya maasi ooreera wiira nisyake iretta.

**Mutaphulelo**

Vamunyukhuni - veepankuni/vakhukuluni



Vano waakhule

Vano osome makoho ni waakhule mukateerununi

1. Mutthaka ola enihimya exeeni?
2. Mwaha wa xeeni ninlamuliwa ahu ottiyelela eyano naakothomolaka?
3. Weyo oniikasopa sayi musaala wiira ohirave wala ohaaravihe iretta axaapara awo?
4. Vanreerela exeeni osyaka iretta oxikola?

Vano osome
ni miyo



Osome ni miyo mutthaka "Osyaka iretta musaala"

Vano
owiriyane



Waawiriyane apurusoori ni otthikele ohimya malove arina mpantta na nlove: rya, soo, sya, nya

osyaka onyawa

owurya wiikasooa

Owiriyane ni ohimye khula nlepo na nlove:

Munyukhu

Ekhukulu



Vokapulaariyu

Omalelihe mmalakani ni anamasuweliha okathi anittharelana: ohiyu, meelo, nsuri, olelo, mwaahiyu

_____ ninsoma mananna a okasooa iretta.

_____ Amina onrowa osoma ekalaase ya neethanu.

Olepe woowupuwelela ohimyakasaka mananna oniirattelaawo wiira osyake iretta oxikola



Vano olepe

Olepe mukateerununi mwawo, ele enirowa osoma apurusoori

Osyaka iretta musaala

Amina ni Filipi anaxikola ooleeleya ni aniphavela osyaka iretta sinivaliwa musaala mwaaya.

Iretta iyo okothomola ni ovyaluwasa

Otakiherye olepaka mukateerununi mwawo

Amina ni Filipi anaxikola ooleeleya.

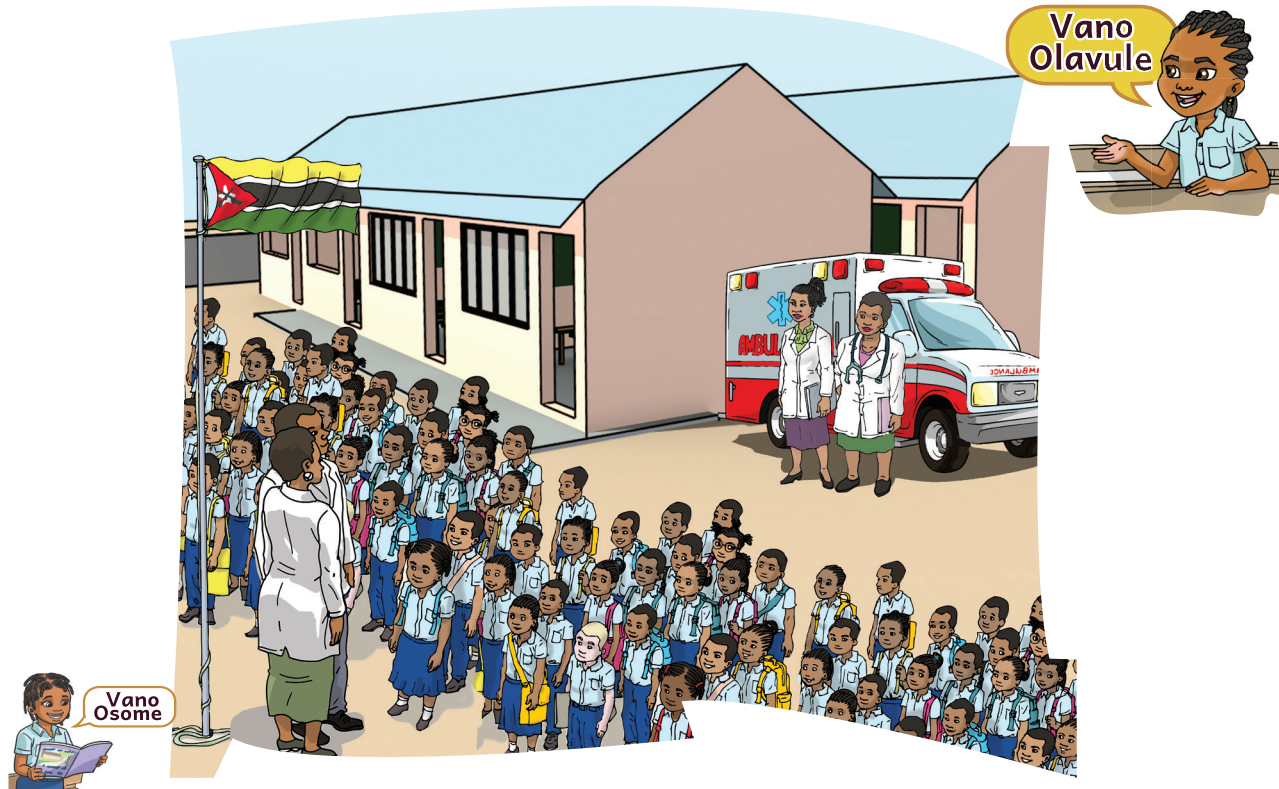
Filipi, exeeni olokela ophiya oxikola?

Khula naxikola orwaaneke maasi awe mwamupootirini mooreera.



Vano
ocampule

Waacampule anaxikola ayili anyawaka ni maasi ari mwaamupootirini



Sootthara wiira musyake iretta

Mmuttettheni waatta iretta siniraviwa ni atthu yathukumana. Akamasi ni ovyaluwasa iyo iretta siniraviwa pure pure.

Vano nisyakeke sayi iretta iyo?

Niratteleke omumula. Nihaana okhuneela ephula ni eyano naakothomolaka wala Naaxamuryaka.

Niireke nikhunneene moonowala nivarenleene epaphelo. Vano, nithipeleke epaphelo eyo okhala wiira nakothomolela enaakhalana anaamunku.

Ti vo, anitumereriwaaya amaaxikara. Amaaxikara anaasyakiha anaamunku wakotela atthu akina.

Nihooliwe oxiripitaali. Okothomola wala ovyaluwasa waatepaka naakuvele oxiripitaali.

Niweleleke ihapari sa iretta siniraviwa mmuttettheni mwahu.

Nihilaleye ihapari nihiiwexenxe ni kuveerunu a elapo ahu.



Osome makoho ni waakhule mukateerununi

1. Iretta xeeni sinitumereriwa osyaka nakhala vaatthuni?
2. Ohimye sootthara wiira nisyake iretta iyo.
3. Eniireliwa exeeni wiira nithipeleke epaphelo nakothomolela?
4. Ohimye mananna makina onisuwelaawo oosyaka iretta.

Vano osome
ni miyo



Osome ni miyo mutthaka "Soothara wiira musyake iretta"

Vano
owiriyane



Waawiriyane apurusoori ni otthikele ohimya malove arina mpantta na nlove: xi, ta, pa, maa

Esaphawu amaaxikara

matata oxipiritaali

Owiriyane ni ohimye khula nlepo na nlove:

Orattela

Mayitho



Vokapulaariyu

Omalelihe mmalakani ni mattiya nsina anittharelana: hiyo, owo, miyo, awosa

_____ ahaana otthariha ikano sa osyakiha iretta.

_____ nihaana onyawa ni esapawu wala ettuurya.

Olepe woowupuwelela waaxutthihaka amusi awo mananna a osyaka iretta ntoko oxuttalaawo oxikola

Vano olepe



Olepe mukateerununi mwawo, ele enirowa osoma apurusoori

Soothara wiira musyake iretta

Waatta iretta siniraviwa atthu yathukumana vanipuroni. Akamasi ni ovyaluwasa iyo iretta siniraviwa pure pure.

Onyawa ni esapawu wala ettuurya orattela matata khula okathi. Orattelaka matata waasyaka anaamunku anaakuxaahu nipuro nipuro.

Otakherye olepaka mukateerununi mwawo

Muhivare mayitho, ephula ni eyano pure pure.

Amaaxikara annaasyakiha anaamunku wakotela atthu akina.

Muhilaleye ihapari muhiwexenxe.

Vano
ocampule



Waacampule anaxikola ayili yaawanreene amaaxikara



Vano Osome



Vano Olavule



Ephattu

Mananna niikhalaahu, ninlyaahu, ninlavulaahu, onithoonyerya ephattu ahu. Ntho ephattu mananna onikhalaahu.

Ikettelo sa ephattu omusuwanyeyiha mutthu ni elapo awe. Iketthelo sa ephattu sinooniheriwa ni ihantisi wala ithale. Sinnooniheriwa ni miteko sa amuharoyiye ni nttaava.

Miteko sa mmatatani sinnooniherya tho ephattu.

Sinniira mpantta sa varoohoni seyiyo sinikumiherya ephattu. Atthu akina anooniherya yiipaka isipo sa khalayi ni sa olelo.

Atthu ene yaawo anniina ni annoopa ikoma sa ephattu.

Attontto a nviko ni malyelyo a atthu annooniha ephattu. Atthu a ilapo sa okhopela osiveliwa ni attontto a iphattu. Attontto anikhala ooreerihiwa ni ikaruma sa muteko.

Ti vo awo annaathuma ni annaaroyiha elapo aya. Owaani wahu anireeriha vassala vahu wala nipuwa ntoko ithutu.

Musurukhu owo onaathumanaaya onnipherya 1000. Amwaavano annixutta miteko sa ephattu wiira sihirimele.

Itthu sa ephattu ya mutthu khasinoniha ehaaya.



Mutaphulelo

Attontto – apuneka



Vano waakhule

Osome makoho ni waakhule mukateerununi

1. Ephattu exeeni?
2. Ohimye mananna enooniheriwaaya ephattu.
3. Exeeni vanireerelaaya amwaavano oxutta miteko sa ephattu?
4. Otakihire mwiineliwo wa ekoma emosa onisuwelaawo.

Vano osome
ni miyo



Osome ni miyo mutthaka "Ephattu"

Vano
owiriyane



Owiriyane malove ari vakarataawuni (ephattu, attontto, ikoma, amwaavano, khalayi), ni othoonye nle nrina mpantta na nlove: ntto, pha, mwa, yi, i

Vano owiriyane ni ohimye khula nlepo na nlove:

Ephattu

Ttontto

malyelyo



Vokapulaariyu

Omalelihe mmalakani ni omusi wa nlove ninttharelana



Olepe woowuupuwelela ohimyakasaka inamuna sinipakiwaaya attontto



Olepe mukateerununi mwawo, ele enirowa osoma apurusoori

Ephattu

Mananna ninkhalaahu annithoonyerya ephattu ahu.

Iketthelo sa ephattu sinnooniheriwa ni ihantisi.

Atthu akina anooniherya yiipaka isipo sa khalayi ni sa naanaano.

Vano otakiherye olepaka mukateerununi mwawo

Attontto a nviko ni malyelyo a atthu annooniha ephattu.

Amwaavano annixutta miteko sa ephattu.

Itthu sa ephattu ya mutthu khasinooniha ehaaya.



Omucampule ttontto



Munahiwe

Munahirwe wiina wa amakuwa a ilapo sootheene. Owo oniphattuwa elapo ya Omurupula.

Munahirwe onikhalana malapa manli oorakama ni acuucu anli. Malapa oorakama a munahirwe oruma ni anoopiwa yeemelaniwe. Nave acuucu anli awo anopiwa ni mutthu okilanteene.

Variyari va nipuwa oniiniwa munahirwe oniiseliwa mooro. Anamwiina anirukurerya mooro okathi woowiina.

Alopwana anli aniipa murepele nave anli animwaakhulela. Alopwana, athiyana ni anamwane ootheene animwiina.

Atthu animwiina aniwarela ikuwo soopakiwa esaaya. Ikamisa soowinana anaamakhata. Atthu awo aniina yuurammeene wala yeemenleene.

Ilapo sikina onniwareliwa marusula oonyakula mmettoni.

Munahirwe oreera vanceenexa ni ovaviha murima.

Ekoma ela kahiyo ya naanaano, ti ya khalayi. Mahiku ala munahirwe oopacerya omalamala mmuttettheni.

Siiso, atthu ale animwiina ni ale animoona khivanaasivela okhala wiira munahirwe ekoma yootepexa oreera wiina.

Nirowe nihihimuxe ikoma sinimalala elapo ahu naakhaliheryaka alipo anisuwela wiipa ni wiina ikoma iyo.



Mutaphulelo

Marusula - ikaruma soonyakula siniwariwa mmettoni wiiniwaka



Vano waakhule

Osome makoho ni waakhule mukateerununi

1. Ohimye ikaruma sinirumeeliwa wiiniwaka munahiwe?
2. Munikhuruni wooniheriwe mwiineliwo wa munahirwe.

Vano osome
ni miyo



Osome ni miyo mutthaka "Munahiwe"

Vano
owiriyane



Owiriyane malove ari vakarataawuni (elapo, anamwiina, acuucu, onyakula, vanceene), ni othoonye nle nrina mpantta na nlove: nya, cu, ncee, mwii, e

Vano owiriyane ni ohimye khula nlepo na nlove:

Acuucu

Marusula

onyakula



Vokapulaariyu

Omalelihe mmalakani ni omusi wa nlove ninttharelana



Olepe woowupuwelela ohimyakasaka ekoma emosa eniiniwaka mmuttettheni mwawo



Vano olepe

Olepe mukateerununi mwawo, ele enirowa osoma apurusoori

Munahirwe

Munahirwe ekoma eniiniwa ni amakhuwa.

Munahirwe onikhalana malapa meeli oorakama.

Variyari va nipuwa oniiniwa munahirwe oniiseliwa mooro. Anamwiina anirukurerya mooro okathi woowiina.

Vano otakiherye olepaka mukateerununi mwawo

Munahiwe oniphattuwa elapo ya Omurupula.

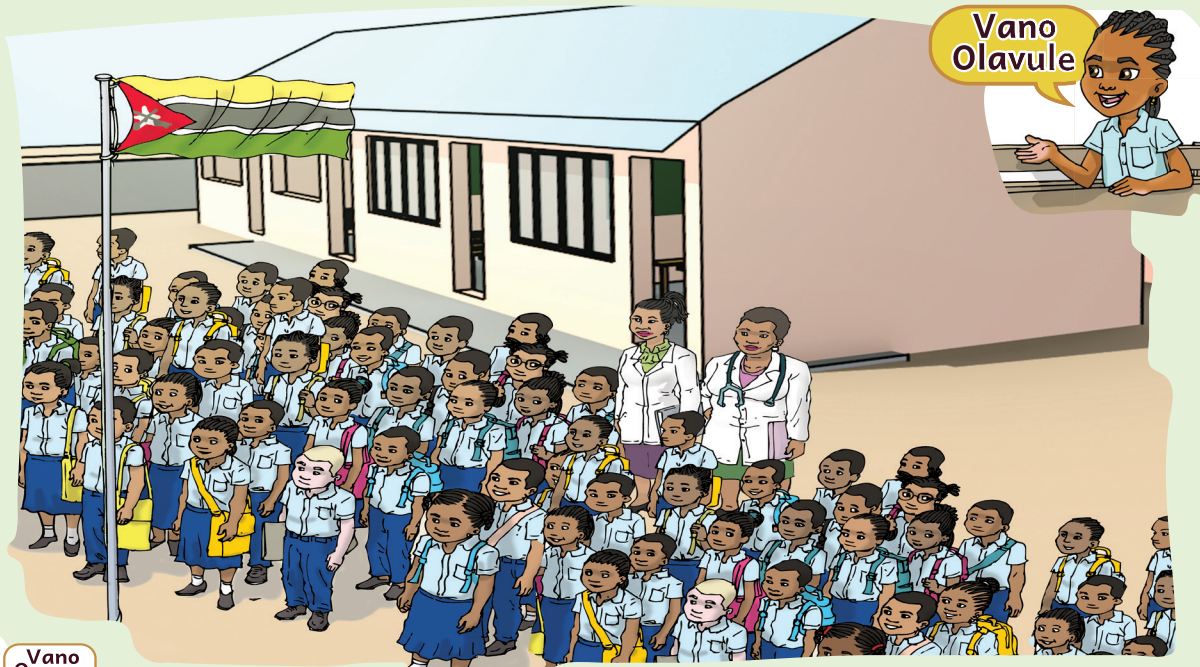
Nipuwa oniiniwa munahiwe onniiseliwa mooro.

Atthu animwiina aniwarela ikuwo soopakiwa esaaya.



Vano
ocampule

Ocampule nlapa nimosana ekoma yoowoosivela.



Exikola yooratteliwa ti exikola yooreera

Exikola ti ennixuttiha osoma, olepa, waalikela ni makhalelo a atthu. Ahooleli a exikola ti atiretoori, apetakooxiku ni axeefi a osekeretariya. Ahooleli ala ti anivaha ikettelo sa vaxikola, waakhaliherya mapurusoori, anaxikola ni anamuteko ootheene a vaxikola.

Mapurusoori aahaana waahoolela anxikola avaraka miteko ntoko olima malaxi, okwesa ni okwesa musaala wala okhupa ni opaha ikokhola.

Oreeriha exikola ni olima malaxi hata okwesa onnisyakiha iretta sinceene vaxikola ntoko ettekuxa, kamasi ni koolera.

Atthu ootheene aahaana osuwela wiira navara ikokhola nihaana onyawa ni maasi ni esapawu wala ettuurwa.

Narattela exikola ahu ninrowa osoma, othweela, wiina mapiko, etuufu, nyawu wala nikece, ninnuwihaka iphattu sahu.

Nireeriheke, niratteleke ni nikhaliheryanেকে miteko sootheene sa vaxikola vahu.



Osome makoho ni waakhule mukateerununi

1. Ohimye itthu sinixuttiwa oxikola.
2. Ahooleli a vaxikola anivara miteko xeeni?
3. Exeeni enireerelaaya onyawa hata okwesa oxikola wahu?
4. Weyo waari muhooleli a exikola waarowa otumereryaka exeeni?

Vano osome
ni miyo



Osome ni miyo mutthaka "Exikola yooratteliwa ti exikola yooreera"

Vano
owiriyane



Waawiriyane apurusoori ni otthikele ohimya malove arina mpantta na nlove: xi, too, hoo, wu, soo,

Anaxikola Atiretoori Nyawu

Apurusoori Muhooleli

Owiriyane ni ohimye khula nlepo na nlove:

Yooreera Sootheene

Oreherya Marusula



Vokapulaariyu

Omalelihe mmalakani ni: owo, yooreera, aka, miyo, hiyo, namasuwelaxa, mitano

Exikola _____ ti _____.

_____ kasoma kinookhala _____.

_____, _____ oneetta ekalaase ya neexexe.

Olepe woowupuwelela ohimyakasaka vanireerelaaya osoma



Vano olepe

Olepe mukateerununi mwawo, ele enirowa osoma apurusoori

Exikola yooratteliwa ti exikola yooreera

Exikola ti ennixuttiha osoma, olepa ni waalikela.

Ahooleli a exikola ti atiretoori, apetakooxiku ni axeefi a osekeretariya.

Nireeriheke, niratteleke ni nikhaliheriyaneke miteko.

Vano otakiherye olepaka mukateerununi mwawo

Oreeriha exikola onnisyakiha iretta sinceene.

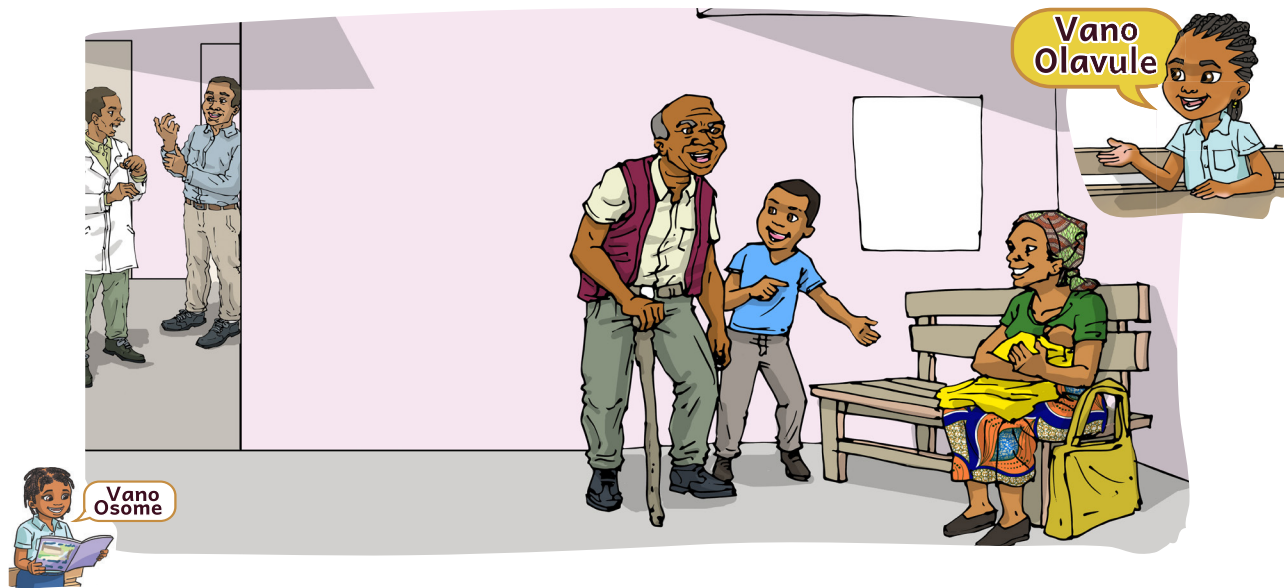
Navara ikokhola nihaana onyawa ni maasi ni esapawu.

Nireeriheke, niratteleke ni nikhaliheriyaneke miteko sootheene sa vaxikola vahu.



Vano
ocampule

Ocampule ikaruma tthaaruru sa oratteliha exikola awo



Mireerelo soothuneya mmuttettheni

Mmuttettheni atthu aahaana mireerelo sa ottittimihana mutthu ni mukhwa awe. Masi atthu anittittihana sayi? Atthu anittittimihana toko sa:

Amwaavano aahaana wiiyeviha oholo wa atthu aalupale. Awo aahaana voohilovela waakhaliha ale ahiniwerya.

Amwaavano aahaana waavaha opuro wookilaathi axitokweene. Vootepeka mmamitekoni ntoko oxiripitaali, omuthukumanoni, oxikola wala opanko.

Amwaavano vootepeka anisooma aahaana osuwela okhomasa. Anaxikola ntoko anooniheryaaya myeettelo oxikola yooniheryeke mmuttettheni.

Awo aahaana oreherya erutthu aya ni mmuttettheni munikhalaaya mahiku ootheene.

Anammuttettheni yiiraaneke mavarelo miteko saya voohinyoonyiwa wala voohicompa.

Makhalelo ala yoonaneyeke nviila, oxikola wala mmawaani.

Nitthariheleke moolumu a mahooleli a nviila, oxikola, moomusini, mmuttettheni ni a elapo.

Ootheene ahu nooniheryeke makhelelo saana a atthu mmuttettheni.

Siiso, ninookhala anaxikola oororomeleya ni ookhaliheriwa osoma mpakha oholo.



Osome makoho ni waakhule mukateerununi

1. Ohimye mireerelo sa ottharihela mmuttettheni sinihimmwa mmutthakani.
2. Exeeni enireerela wiira amwaavano yaaphwanya atthu atokweene?
3. Onaattittimiha sayi atthu onikhalanaawo?
4. Mireerelo xeeni soothuneya atthu aneettelaaya mmuttettheni onikhalaawo?

Vano osome
ni miyo



Osome ni miyo mutthaka "Mireero soothuneya mmuttettheni"

Vano
owiriyane



Owiriyane malove ari vakarataawuni (mmuttettheni, anittittimihana, ootheene, nitthariheleke), ni othoonye nle nrina mpantta na nlove: tte, ttha, thee, ha

Owiriyane ni ohimye khula nlepo na nlove:

Wiiraana

Varoohoni

Miteko



Vokapulaariyu

Omalelihe mmalakani ni mananna a nlavulo niri okathi wa naanaano

Miyo (ovaha) _____ opuro mutokweene.

Hiyo (okhomasa) _____ atthu aalupale.

Olepe woowuupuwelela mananna onaattittimihaawo akhwaawo



Vano olepe

Olepe mukateerununi mwawo, ele enirowa osoma apurusoori

Mireerelo soothuneya mmuttettheni

Mmuttettheni atthu ahaana mireerelo sa ottittimihana mutthu ni mukhwa awe.

Amwaavano ahaana wiiyeviha ohoolo wa atthu aalupale.

Amwaavano vootepexa anisoma ahaana osuwela okhomasa.

Otakherye olepaka mukateerununi mwawo

Atthu ahaana mireerelo sa ottittimihana.

Amwaavano ahaana waakhaliha ale ahiniwerya.

Awo ahaana oreherya erutthu aya ni mmuttettheni munikhalaaya mahiku ootheene.



Vano
ocampule

Omucampule mmiravo omuvarenle nakhulu



Muttetthe aka

Olelo muttetthe aka wookisivela
 Okisivela atthu a mmuttettheni mwaka
 Omuttettheni waka atthu ootheene anivara muteko ni wiiraana
 Muttetthe aka ti wooreera ni woorehereya

Ti vo, miyo kinikumihha sa varoohoni vaka
 Atthu animwiilipiha wiira amalamalihe ohaawa
 Atthu annisiveliwa ni miteko sinivaraaya
 Okisivela khaawehaka aximaama ni axipaapa atekaka exikola

Okisivela kaawehaka anamwane ethweelaka
 Okisivela kaawehaka anamwane arowaka osoma oxikola
 Okisivela axipaapa ni aximaama anakhaliheryaaya awo osoma
 Okisivela waaweha anammuttetthehi akhaliheryanaka

Okisivela alimi vankhumaaya voosiisu arowaka olima
 Olima oreera onilikana ni osoma
 Wiirula onilikana ni opasaari oxikola
 Siiso eyoolya ni osuwela itthu sihimmla mmuttettheni maka



Osome makoho ni waakhule mukateerununi

1. Exeeni namalavula a mutthaka onisiveliwaawe ni atthu a mmuttetthe mwawe?
2. Olima onilikana ni osoma. Ohimye vaniireliwaaya olima onilikana ni osoma.
3. Ohimye itthu sinoosivela mmuttettheni mwawo.
4. Miteko xeeni sinivaraaya atthu a mmuttettheni onikhalaawo?

Vano osome
ni miyo



Osome ni miyo mutthaka "Muttetthe aka"

Vano
owiriyane



Waawiriyane apurusoori ni otthikele ohimya malove arina mpantta na nlove: lii, kwaa, ko, taa

Oxikwaatara Mapiliisa

Naxikola Oxipiritaali

Owiriyane ni ohimye khula nlepo na nlove:

onttekeni

annookololiwa



Vokapulaariyu

Omalelihe mmalakani ni anamasuweliha a opuro: waattamela, ottayiwene

Miyo kinikhala _____ oxikola.

_____ wa exikola nookhala nipuwa na mphira.

Owo onikhala _____ exipiritaali masi miyo

kinikhala _____.

Olepe woowupuwelela olavulaka muteko onivara nxinyero



Vano olepe

Olepe mukateerununi mwawo, ele enirowa osoma apurusoori

Mitthenkeso sa kuveerunu

Exikola ela anisoma anamwane mpakha ekalaase ya na 7.

Oxipiritaali anilooliwa aretta a vakhiviru ni oottayiwene.

Oxikwaatara weyiwo annookololiwa mirima alavilavi.

Iwo nipuro anivaraaya mapiliisa, anamakhapelela muttetthe ni mmaaleleyo.

Otakherye olepaka mukateerununi mwawo

Namalima onilima ematta onaruwerya mihokorokho sinceene.

Nxinyero namasuwela muulupale oovarakasa ikaruma sa miteko.

Onuupuwelela matekeliwaaya iparapaara, ipereetiyu wala matteeke anirumeela atthu.

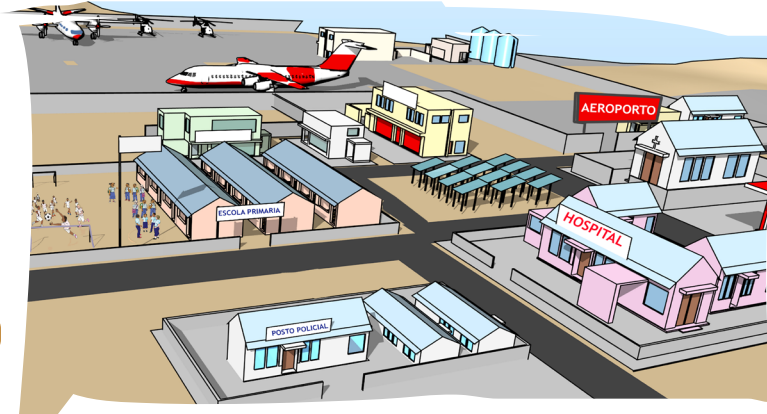


Vano
ocampule

Ocampule exipiritaali mukateerununi mwawo



Vano Osome



Vano Olavule

Mitthenkeso sa kuveerunu

Kuveerunu ookhalana mitthenkeso atthu anirumeelaaya khula mahiku. Vapapheloni nva sookhala mitthenkeso iya:

- exikola, exipiritaali, exikwaatara, onttekeni ni epasari.

Exikola ela anisoma anamwane mpakha ekalaase ya na 7. Ela ni exipiritaali siri moonoo woolophwana wa eparapaara.

Oxipiritaali anilooliwa aretta avakhiviruni oottayiwene. Atthu aniphwanya iretta ni ihasara sa mparapaara anipacerya ohimya oxikwaatara etthu yaakhumelale ahinatthi orowa oxipiritaali.

Oxikwaatara weyiwo annookololiwa mirima alavilavi. Iwo nipuro anivaraaya mapiliisa, anamakhapelela muttethe ni mmaaleleyo.

Onttekeni nto nipuro nimmora ni ninvenyaaya ntteeke ni atthu wala ni soorumeela.

Opasari sinithumiwa itthu soovirikana ni hata ikateerunu.

Ohiya mitthenkeso iya, va sookhala sikina ntoko:

- Ipanko seyiyu sinisuka musurukhu wa atthu;
 - Mitthenkeso sa miteko soolima ni okasoopa soolimmwa.
 - Mitthenkeso sa omiserya ihopa soowinnuwa ni sooreerela.
 - Mitthenkeso iyo sinninuruuhela mireerelo.
 - Iyo sinaakhaliherya atthu anceene oraala mulaponi mwaya.
- Siiso, anamuteko anninnuwiha elapo ahu ni osuwela wihu



Mutaphulelo

Oraala – othaaciri



Vano waakhule

Osome makoho ni waakhule mukateerununi

1. Ohimye mitthenkeso sa kuveerunu sinilavuliwa mmuthakani?
2. Mireerelo xeeni sinivahaaya mitthenkeso sa kuveerunu?
3. Waawereyiwaka onirowa mutthenkeso xeeni wiira ovone?
4. Ovirikanyiwe muteko wa exipiritaali ni exikwaatara

Vano osome
ni miyo



Osome ni miyo mutthaka "Mitthenkeso sa kuveerunu"

Vano
owiriyane



Waawiriyane apurusoori ni otthikele ohimya malove arina mpantta na nlove: lii, kwaa, ko, taa

Oxikwaatara Mapiliisa

Naxikola Oxipiritaali

Owiriyane ni ohimye khula nlepo na nlove:

onttekeni annookololiwa



Vokapulaariyu

Omalelihe mmalakani ni anamasuweliha a opuro: waattamela, ottayiwene

Miyo kinikhala _____ oxikola.

_____ wa exikola nookhala nipuwa na mphira.

Owo onikhala _____ exipiritaali masi miyo

kinikhala _____.

Olepe woowupuwelela olavulaka muteko onivara nxinyero

Vano olepe



Olepe mukateerununi mwawo, ele enirowa osoma apurusoori

Mitthenkeso sa kuveerunu

Exikola ela anisoma anamwane mpakha ekalaase ya na 7.

Oxipiritaali anilooliwa aretta a vakhiviru ni oottayiwene.

Oxikwaatara weyiwo annookololiwa mirima alavilavi.

Iwo nipuro anivaraaya mapiliisa, anamakhapelela muttethe ni mmaaleleyo.

Otakherye olepaka mukateerununi mwawo

Namalima onilima ematta onaruwerya mihokorokho sinceene.

Nxinyero namasuwela muulupale oovarakasa ikaruma sa miteko.

Onuupuwelela matekeliwaaya iparapaara, ipereetiyu wala matteeke anirumeela atthu.

Vano
ocampule



Ocampule exipiritaali mukateerununi mwawo



Miteko sa nlaponi

Mmuttetheni anikhala anamuteko anceene ni miteko saya soovirikana. Awo anivara miteko ntoko opurusoori, onfirimeero, onamalima, onamamiserya, onxinyero, onahapari, opiliisa ni otoropa.

Purusoori onaasomiha anaxikola oxikola. Onaavaha akhili anaxikola ni onaasuveliha olumwenku.

Nfirimeero onaakhapelela aretta oxipiritaali. Onihoolela olaleya ekumi ni osyakiha iretta mmuttetheni.

Namalima onilima ematta onaruwerya mihokorokho sinceene. Siiso, owo onnikhalana ehoolya ya khula nihiku ni yootumiha.

Omiserya muteko wootthatta ihopa mmaasini. Namamiserya khonithoyiwa muhusi ni onnitumiha ihopa.

Nxinyero namasuwela muulupale oovarakasa ikaruma sa miteko. Onuupuwelela matekeliwaaya iparapaara, ipereetiyu wala matteeke anirumeela atthu.

Nahapari namathokosa a ihapari sa ekeekhayi. Onaasuveliha atthu ihapari sa ekeekhayi ni iye siniira mmipanttani.

Mapiliisa ti anaakhapelela atthu ni mmaaleleyo ni ohoova. Nave atoropa aniira avaraka muteko woowaakiha elapo.

Anaxikola yakeleliha ohoolo osoma annithanla muteko owaasivela. Nrowe nilipiherye orowa oxikola osoma.



Mutaphulelo

Otthatta – ovara ehopa ni ithelo, ikhiniya, ntthavi wala ithokwa



Osome makoho ni waakhule mukateerununi

1. Ohimye miteko siri mmutthani?
2. Nxinyeero onivara muteko xeeni?
3. Ohimye miteko sinivariwa mmuttetheni mwawo.
4. Muteko xeeni oniloheryaawe okhala wasoma? Mwaha wa xeeni oniloheryaawe muteko owo?

Vano osome
ni miyo



Osome ni miyo mutthaka "Miteko"

Vano
owiriyane



Owiriyane nlove anrowaaya osoma apurusoori ni ohimye mpantta woopacerya wa nlove:

exikola
wuurula
namamiserya

Owiriyane ni ohimye khula nlepo na nlove:

onamamiserya
nfrimeero
namanyukwa



Vokapulaariyu

Omalelihe mmalakani ni mananna a nlavulo orumeelaka okathi woovira

naanaano

Hiyo (olima) _____ mee.

Nyuwosa (oteka) _____ empa yooreera.

Awosa (otumiha) _____ ihopa opasari.

Olepe woowuupuwelela olavulaka muteko oniphavelaawo okhala wannuwa.



Vano olepe

Olepe mukateerununi mwawo, ele enirowa osoma apurusoori

Miteko

Mmuttettheni anikhala anamuteko anceene ni miteko saya soovirikana.

Purusoori onaasomiha anaxikola oxikola.

Onaavaha akhili anaxikola ni onaasuveliha olumwenku.

Otakherye olepaka mukateerununi mwawo

Nfrimeero onaakhapelela aretta oxipiritaali.

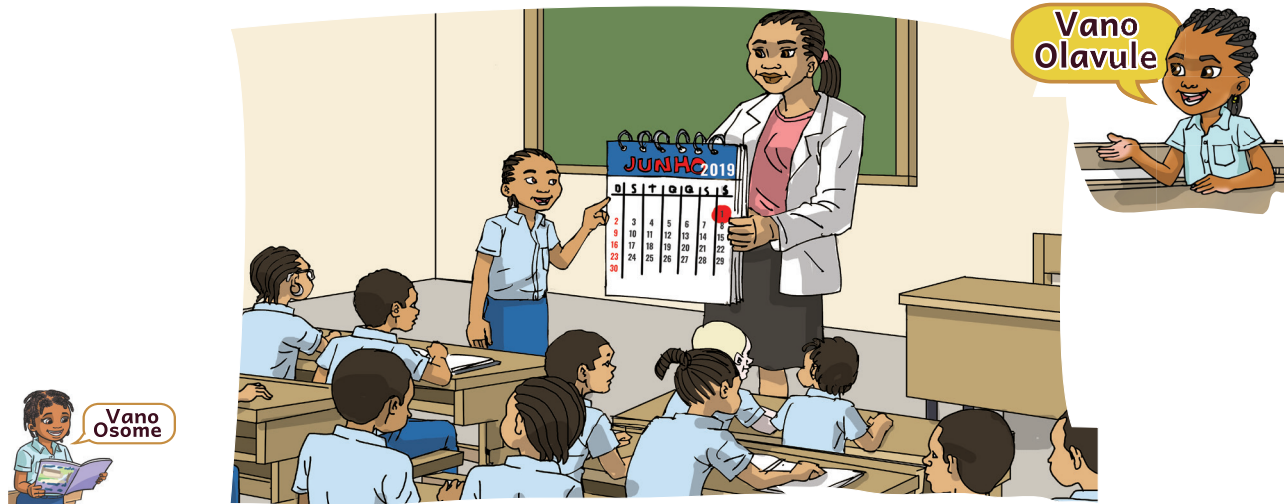
Namalima onilima ematta onaruwerya mihokorokho sinceene.

Siiso, owo onnikhalana eyoolya ya khula nihiku ni yootumiha.



Vano
ocampule

Omucampule mukateerununi mwawo mutthu omiseryaka



Nihiku na anamwane

Nihiku ni opacerya mweeri a Xuunyu ti na anamwane olumwenku ootheene. Nihiku nna nireheriwe ni Mutthenkeso a Ilapo Soowirana (ONU), mwaakha wa 1950.

Siiso, yaaleelihiwa atthu wiira amalihe miteko soowaahaxa anamwane, otheliwa ayenveene vohitthareliwa nlepa na erutthu, etiini ni nihimo.

Nihiku anamwane anitteeliwaaya murima ni othweela. Mmaxikolani ninnithokihiwa niira nuulupale.

Awo anniipa, anniina ni annipaka isepwere ni annilyaasa. Ni tho annooniherya muupuwelo aya ni isipo, sa varoohoni ni mutakiheryo.

Vuupuweliwaka wiira nlelo aakhala anamwane ari moohawani, vannisuwelihiwa wiira awo aakhalana ihaki saya:

- Aakhalana ehakhi yoosoma ni nttaava naya nooyareliwa.
- Anamwane aakhalana ihakhi ya okhalana okumi.
- Anikhalana nsina, elapo aya ni aahaana olepihiwa yayariwa.
- Anamwane anikhala hoothe ni axipaapa ahihooxiwaka;
- Awo anithanla etini aya akhalihewaka ni axipaapa aya;
- Annithukumana ni akhwaaya ahimuhooxaka mutthu;
- Anamwane aahaana okhala voorehereya;

Niira na nihiku ni opacerya mweeri wa Xuunyu kahiyo nihiku noomalela na osoma. Naviriha nihiku nla nitthikeleke oxikola wiira nisome.



Osome makoho ni waakhule mukateerununi

1. Nihiku xeeni nintthapeliwa anamwane?
2. Ohimye ihakhi piili sa anamwane sinooniheriwa mmutthakani.
3. Eniiriwaka exeeni naphiya nihiku na meera makina?
4. Onivirihaka sayi nihiku na anamwane?

Vano osome
ni miyo



Osome ni miyo mutthaka "Nihiku na anamwane"

Vano
owiriyane



Owiriyane nlove anrowaaya osoma apurusoori ni ohimye mpantta woomalela wa nlove:

Olya Xuunyu
Orukuneya Onyuunya

Vano owiriyane ni ohimye khula nlepo na nlove:

Xuunyu
Mwaakha
Osuweliha



Vokapulaariyu

Omalelihe mmalakani ni omusi wa malove anttharelana:



Olepe woowupuwelela olavulaka ihakhi sawo sinisuwelaawo.



Olepe mukateerununi mwawo, ele enirowa osoma apurusoori

Nihiku na anamwane
Nihiku na opacerya na mweeri wa Xuunyu, ti na anamwane.
Nihiku anamwane anitteeliwaaya murima ni othweela.
Awo aakhalana ehakhi yoosoma ni nntaava naya nooyareliwa.
Anamwane aakhalana ihakhi ya okhalana okumi.

Otakherye olepaka mukateerununi mwawo

Mmaxikolani ninnithokihwa niira nuulupale.
Anamwane aakhalana ehakhi yoosoma ni nntaava naya nooyareliwa.
Anamwane anikhala hoothe ni axipaapa ahihooxiwaka;
Awo anithanla etini aya akhaliheriwaka ni axipaapa aya.



Omucampule mukateerununi mwawo mwaana othweelaka.

Vano
Olavule

Nihiku ni opacerya mweeri wa Xuunyu

Olelo, Ruuyi, Riita, Luuka ni Hapipa aniira mpatta a nikhuru na anamwane anithweela vapuwani vamaluwa ooxikola.

Awo anivaanela mwaha wa nihiku ni opacerya mweeri a Xuunyu



- Sayi ehaali, Riita! Onrowa ovira sayi nihiku na ahu?



- Salaama. Ruuyi, weyo wa mukumi?



- Aayo, kiniviriha saana nihiku naahu nna.
- Ankhi weyo Luuka, khureere woottela murima, ah?



- Niira na mitano noovirikana ni na mwayisana. Mwayisana naarimoolya ni ophwaneliwa paahi. Luuka ohinatthi omala olavula aahaakhulela Hapipa iiraka:



- Aayo Luuka. Ntano, nookumiherya sa varhooni, nihiipa isipo ni noopaka mixinttano mpaka otthuveliwa.
- Miyo nkireere ophwaneliwa ni murima wookitteela.



- Naahireeriha. Noonanariha masi nihaana ovela tho. Woophiya okathi wooreeriha musaala! Khula mutthu aahirowa oreeriha esaala awe.



Vano waakhule

Osome makoho ni waakhule mukateerununi

1. Waahimye antthu-piitthu a mutthaka ola?
2. Antthu-piitthu a mmutthakani anivaanela exeeni?
3. Exikola awo enitthokihaka sayi nihiku na anamwane.
4. Eniiriwaka exeeni navira nihiku na opacerya na Xuunyu oxikola wawo?

Vano osome
ni miyo



Osome ni miyo mutthaka "Nihiku ni opacerua mweeri wa Xuunyu"

Vano
owiriyane



Owiriyane nlove anrowaaya osoma apurusoori ni ohimye mpantta na eriyari wa nlove:

Opwapwa
Ophwanya

Ophwaneliwa
Ophavela

Owiriyane ni ohimye khula nlepo na nlove:

Mwayisana
Naarimoolya
Mixinttano



Vokapulaariyu

Omalelihe mmalakani ni malove anthoonyerya okhalana anireerela: nanyu, awe, aka, nahu.

Hiyo ootheene naahiviriha nihiku _____ ni murettele.

Naphiya nihiku _____ mukilattule wiira kiirele mpantta.

Olepe woowuupuwelela olavulaka mananna a oviriha nihiku 1 na Xuunyu



Vano olepe

Olepe mukateerununi mwawo, ele enirowa osoma apurusoori

Nihiku ni opacerya mweeri wa Xuunyu

Anamwane anivaanela mwaha wa nihiku na opacerya mweeri a Xuunyu.

Niira na mitano noovirikana ni na mmwayisana.

Miyo nkireere ophwaneliwa ni murima wookitteela.

Otakherye olepaka mukateerununi mwawo

Aayo, kiniviriha saana nihiku naahu nna.

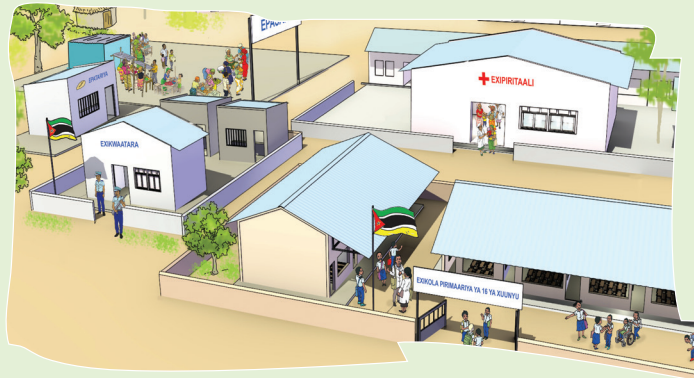
Niira na mitano noovirikana ni na mwayisana. Mwayisana naarimoolya ni ophwaneliwa paahi.

Naviriha nihiku na anamwane nitthikeleke oxikola wiira nasome.



Vano
ocampule

Omucampule mukateerununi mwawo mmiravo onimuttikha mphira



Moota wa okhala mmuttetheni

Muttethe nipuro onkhaliya ni atthu, ti vo vanitumereriwaaya ottittimihana.

Voosiisu, othana ni ohiyu atthu yakumana ahaana okohana ehaali wiira asuweleke okumi wa khula mutthu.

Atthu khalamuliwe omuvira mutthu mukina vohikohana ehaali wala olavulihana.

Mmuttetheni memmo aakhala tho mapuro anivariwa muteko ntoko: - Exipiritaali, Exikola, Emusewu, Eropoorutu, Epasari, Epanko, Exikwaatara ni makina.

Mapuro awo atekiwe mmuttetheni wiira yaakhaliheryeke atthu okhala saana memmo.

Siiso mutthu awereyiwa onrowa oxipiritaali wiira avahiwe murette ompenuxa.

Nave atthu yaphavela osuka musurukhu aya anrowiha opanko, okhala wiira iwe ti nipuro nooromeleya osuka musurukhu.

Nihiliyale tho wiira mmuttetheni mootheene sookhala ixikola sinisoma anamwane.

Awo annitthapela niira naya nihiku noopacerya na mweeri wa Xuunyu.

Nna nihiku anamwane a olumwenku woothene anitthapaaya, othweela ni olya.

Awo ahaana ehakhi yopakeliwa niira naya wiira yunnuweke ni otteeliwa murima.



Mutaphulelo

Vanitumereriwaaya - vanumperiwaaya



Vano waakhule

Osome makoho ni waakhule mukateerununi

1. Exeeni enitumereriwa atthu mmuttetheni?
2. Ohimye muteko onivariwa opanku.
3. Olepe ihakhi sa anamwane onisuwelaawo.
4. Wooniherye sa varoohoni sinikumiheriwa nihiku na anamwane.

Vano osome
ni miyo



Osome ni miyo mutthaka "Moota wa okhala mmuttettheni"

Vano
owiriyane



Owiriyane nlove anrowaaya osoma apurusoori ni ohimye mpantta woopacerya, weeriyari ni woomalela wa nlove:

Ahaana Nipuro
Olumwenku Murima

Owiriyane ni ohimye khula nlepo na nlove:

Miri Otumererya
yunnuweke olumwenku



Vokapulaariyu

Omalelihe mmalakani ni namalikanxa onilikanela: oohakalala, oowoolowa ni ooreera

Anamwane ahinanaraseke. Awo ahaana weetta _____.
Mutthu _____ ohaana okhanyereriwa ni okhaliheriwa ovara miteko.

Anamwane aniphentiwa anikhala _____ mmuttettheni.

Olepe woowupuwelela olavulaka mananna onikhalaawo mmuttettheni



Vano olepe

Olepe mukateerununi mwawo, ele enirowa osoma apurusoori Moota wa okhala mmuttettheni

Voosiisu, othana ni ohiyu atthu yakumana ahaana okohana ehaali.

Mmuttettheni memmo aakhala tho mapuro anivariwa muteko.

Mapuro awo ti Exipiritaali, Exikola, Emusewu, Eropoorutu, Epasari, Epanko, Exikwaatara ni makina.

Otakherye olepaka mukateerununi mwawo

Mutthu awereyiwa onrowa oxipiritaali wiira avahiwe murette openuwe.

Mmuttettheni mootheene sookhala ixikola sinisoma anamwane.

Anamwane ahaana ehakhi yopakeliwa niira naya wiira yunnuweke ni ot-teeliwa murima



Vano
ocampule

Ocampule empa mukateerununi ni ottikitthele ni malepa owoosivela.



Nihiku 25 na mweeri a Xuunyu

Nihiku 25 mweeri wa Xuunyu nihiku na woopowa Omosampiikhi. Nihiku nla nithokihwe nihiku 25 na mweeri wwa Xuunyu wa mwaakha 1975 okampu ya Omaxava Omaputu.

Nihiku na woopoliwa atthu ni na murettele. Nihiku ni opacerya naathomeyiwale epantera ya Omosampii khi ni wiipiwa hiinu a elapo.

Ni woopowa wa elapo, Mosampiikhi ookhalana epantera, empeleema ni iinu a elapo ntoko nthoonyero wa Omosampiikhi.

Empelema yookhalana eliivuru emosa enihimya osoma, kaphwitthi onihimya wiilipiha ni owehaweha, ehipa enihimya oruwerya.

Epantera yookhalana malepa 5 anihimya sinitharelana:

- Nooxeerya, nooripa, noopipila, nancano, nootteela.

Malepa awo anihimya wiira:

- Nooxeerya – nihimya okhotto ni kolono, yoowopola ni waakiha elapo.
- Noopipila – nnooniherya etthaya yoorala.
- Nooripa – nnooniherya elapo ya Waafirika.
- Nancano – nnooniherya oraala vathi va etthaya.
- Nootteela- ninhimya murettele.

Enireerela exeeni wiira atthu akhaleke ni murettele Omosampiikhi?



Mutaphulelo

Nlepa – nikhili



Osome makoho ni waakhule mukateerununi

1. Enitthapeliwa exeeni nihiku 25 a mweeri a Xuunyu a khula mwaakha Omosampiikhi?
2. Exeeni enihimyaaya khula nlepa na epantera ya Omosampiikhi?
3. Exeeni vanikhottihwaaya weetta wiipiwaka iinu wala yaathomeyiwaka epantera ya Omosampiikhi?

Vano osome
ni miyo



Osome ni miyo mutthaka "Nihiku 25 na mweeri a Xuunyu"

Vano
owiriyane



Waawiriyane apurusoori ni otthikele ohimya malove arina mpantta na nlove: nya, ttha, pwe

Onyakula masipo Owurya

Otthapela Opwexa

Owiriyane ni osome khula nlepo na nlove:

Murettele

Oweliha

Epantera



Vokapulaariyu

Omalelihe mmalakani ni mananna a nlavulo orumeelaka okathi woovira naanaano

Nono (onithomeya) _____ epantera oxikola wawe.

Amina (onimuhoolela) _____ Hiino oxikola wawe olelo.

Miyo (kinitthapela) _____ nihiku na woopowa elapo.

Olepe woowupuwelela olavulaka wa nihiku na woopowa elapo ahu.



Vano olepe

Olepe mukateerununi mwawo, ele enirowa osoma apurusoori

Nihiku 25 mweeri wa Xuunyu nihiku na woopowa Omosampiikhi.

Nihiku nla nitthokihewe nihiku 25 na mweeri wa Xuunyu wa mwaakha 1975 okampu ya Omaxava Omaputu.

Nihiku na woopoliwa atthu ni na murettele.

Nihiku ni opacerya naathomeyiwale epantera ya Omosampiikhi ni wiipiwa hiinu a elapo.

Otakiherye olepaka mukateerununi mwawo

Epantera ya Omasampiikhi yookhalana malepa 5 anihimya:

- Nooxeerya – nnihimya okhotto ni kolono, yoowopola ni waakiha elapo.
- Noopipila – nnooniherya etthaya yoorala.
- Nooripa – nnooniherya elapo ya Waafirika.
- Nancano – nnooniherya oraala vathi va etthaya.
- Nootteela- ninhimya murettele.



Vano
ocampule

Omucampule mutthu owelihaka epantera ya Omosampiikhi.

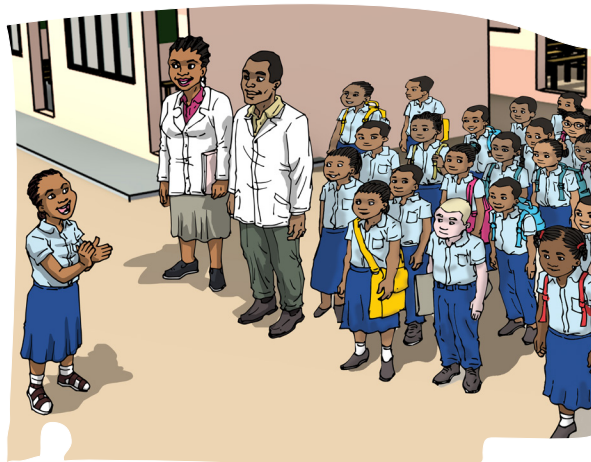


Wuupuwelela nihiku na woopowa ahu

Nihinatthi ophiya nihiku na 25 na mweeri a Xuunyu Ayipu, Minyala, Piiyu ni Suraaya yaahithanliwa ni apurusoori wiira yaahoolole anaxikola ni masipo ni sa varoohoni.

Awo yaaheetetela miteko saya ni yaahoniherya oxikola.

Vano niiweleleke miteko seyiyu:



- Olelo nihiku nuulupale yoopon'we elapo ahu, Mosampiikhi.
- Apurusoori aakixuttiha yookumiherya ya varoohoni.
- Miyo nto kinirowa ohimya nihiku nla ni ya varoohoni.

- Miyo nave kiri ni nsipo na aka va.

- Nsipo naka nnihimya wiira nihiku na 25 wa Xuunyu nihiku na woopowa.

- Siiso, murettele woonaneyeke Omosampiikhi ootheene.

Ayipu, Minyala, Piiyu ni Suraaya ni ophiya oxikola yaahivara miteko saya:

Ayipu aahilamula ya varoohoni ni malepa a epantera ahu.

Minyala aahiipa, Piiyu ni Suraaya yaahiina yaakhulelaka.

Nrowe nittittimiheke nihiku na 25 na mweeri a Xuunyu naphiya.



Osome makoho ni waakhule mukateerununi

1. Waahimye antthu-piitthu a mutthaka osommyaawo.

2. Muteko xeeni ovanre Minyala ni Piiyu nihiku na 25 na mweeri wa Xuunyu?

3. Exeeni vanireerelaaya ovara miteko ninrumiwaahu ni apurusoori oxikola?

4. Otakiherye mananna aniwelihiwaaya epantera ya Omosampiikhi.