



# Eliivuru ya Emakhuwa

Ekalaase ya Neexexe

4



REPÚBLICA DE MOÇAMBIQUE  
MINISTÉRIO DA EDUCAÇÃO E  
DESENVOLVIMENTO HUMANO



**USAID**  
DO POVO AMERICANO



A produção deste livro tornou-se possível graças ao apoio do povo Americano através da Agência dos Estados Unidos para o Desenvolvimento Internacional (USAID). O conteúdo desta publicação é da total responsabilidade do Ministério da Educação e Desenvolvimento Humano da República de Moçambique.

## FICHA TÉCNICA

**Título:**

Eliivuru ya Emakhuwa Ekaalase ya Neexexe

**Língua:**

Emakhuwa

**Coordenação Editorial - MINEDH:**

Ismael Nhêze, Telésfero de Jesus, Rafael Bernardo, Fabião Nhabique e Laquene Laisse

**Vamos Ler!:**

Samima Patel, Abdala Machude, Dilson Buque e Francisco Sampaio

**Autores:**

Neves Jacinto Anselmo, Júlio Bernardo, Lucas Bonga, Eduardo Napualo,

Elmano Mucopo e Saraiva A Aibo

**Assessoria metodológica e linguística:**

Carlos Manuel

**Ilustração:**

Cassamo Moiane

**Maquetização:**

Walter Sambo

**Capa:**

Cassamo Moiane e Omaio Panachande

**Impressão:**

Minerva Print

**Tiragem:**

46,728

**N.º do Registo Depósito Legal:**

DL/BNM/780/2021

**Financiado por USAID**

**República de Moçambique**



AMUSI - Esumana 1 .....	8
Miyoni amusi aka.....	8
Amusi a Nimanle .....	10
AMUSI - Esumana 2 .....	12
Sookhumelela vanihikuni .....	12
Nihiku na niira .....	12
AMUSI - Esumana 3 .....	14
Ewaarakha.....	16
Musuweliho .....	18
MAWEHAWEHERYO - Esumana 4 .....	21
Ewarakha .....	19
AMUSI - Esumana 5 .....	20
Sofiya onimuhoola awe Amina oxipiritaali .....	22
Orattela mpaani mwahu .....	24
AMUSI - Esumana 6 .....	26
Makhalelo ahu ni soolya .....	26
Orattela nipuwa .....	28
AMUSI - Esumana 7 .....	30
Musuko.....	30
Mananna oosuka musurukhu.....	32
MAWEHAWEHERYO - Esumana 8 .....	34
Osyaka iretta.....	34
EXIKOLA - Esumana 9.....	36
Mulaleyo .....	36
Mananna ookhala oxikola .....	38
EXIKOLA - Esumana 10.....	40
Mooniheryo wa oxukurya wa ahooleli a muttethe.....	40
Miyetteeki sa Vaxikola .....	42
EXIKOLA - Esumana 11.....	44
Oreherya mixinttano oxikola .....	44
Muxinttaano wa mphira .....	46
MAWEHAWEHERYO - Esumana 12 .....	48
Exikola yoothanleleya .....	48
EKUMI NI ORATTA - Esumana 13 .....	50
Orattela exikola .....	50
Exikola ahu yooreera .....	52
EKUMI NI ORATTA - Esumana 14 .....	54
Osyaka iretta musaala .....	54
Soothara wiira musyake iretta.....	56



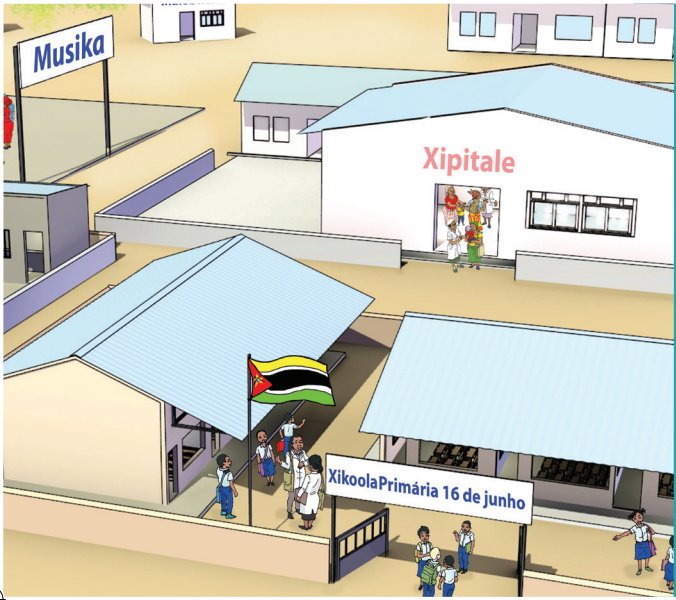
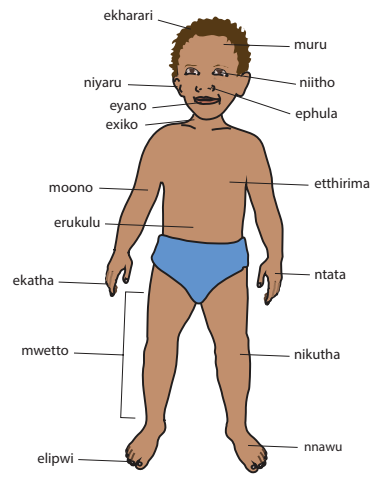
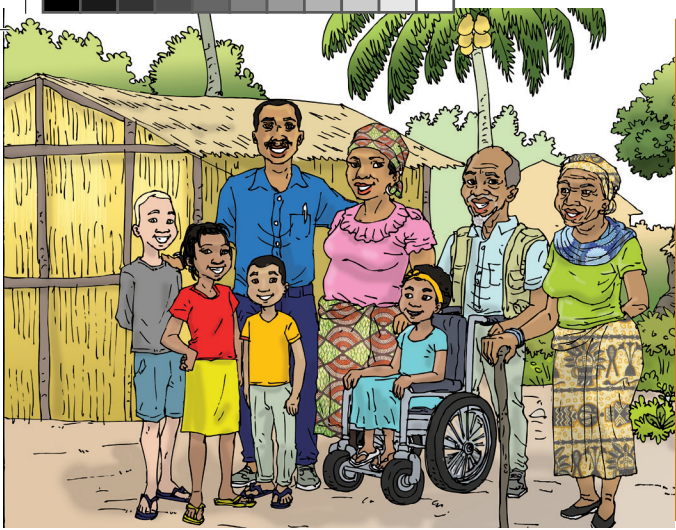
MUTTETTHE - Esumana 15.....	58
Ephattu .....	58
Munahiwe .....	60
MAWEHAWEHERYO - Esumana 16.....	62
Exikola yooratteliwa exikola yooreera .....	62
MUTTETTHE - Esumana 17 .....	64
Mireerelo sootthuneya mmuttettheni .....	64
Mutthethe aka .....	66
MUTTETTHE - Esumana 18.....	68
Mitthenkeso sa kuveerunu.....	68
Miteko sa nlaponi .....	70
EXIKOLA - Esumana 19.....	72
Nihiku na anamwane.....	72
Nihiku ni opacerya mweeri wa Xuunyu .....	74
MAWEHAWEHERYO - Esumana 20.....	76
Moota wa okhala mmuttettheni .....	76
MUTTETTHE - Esumana 21.....	78
Nihiku 25 na mweeri a Xuunyu .....	78
Wuupuwelela nihiku na woopowa .....	80
NLAKA - Esumana 22.....	82
Okhapelela nlaka.....	82
Mananna ookhapelela nlaka.....	84
NLAKA - Esumana 23 .....	86
Nihiku na miri .....	86
Efayita ya miri .....	88
MAWEHAWEHERYO - Esumana 24 .....	90
NLAKA - Esumana 25.....	92
Miri sa muttethe ahu .....	92
Miri kinirowaaka waala .....	94
NLAKA - Esumana 26.....	96
Inama sa vate.....	96
Maasi ekumi .....	98
NLAKA - Esumana 27.....	97
Inama sihinihuwiwa.....	100
Yeetthepo ni namarokolo .....	102
MAWEHAWEHERYO - Esumana 28.....	104
Inama ni miri sa muttethe aka.....	104
ERUTTHU YA MUTTHU - Esumana 29 .....	106
Erutthu ya mutthu .....	106
Mananna ooratteka erutthu ahu .....	108
ERUTTHU YA MUTTHU - Esumana 30 .....	110
Ottittimiha erutthu ahu .....	110
Mipantta sa osuweliha .....	112





<b>EKUMI NI ORATTA - Esumana 31</b> .....	114
Eyaapeelo Ya muttethe wa osulu wa Omosampiiki.....	114
Mananna ea orattela soolya .....	116
Vai ficar tudo brilhante! .....	114
<b>MAWEHAWEHERYO - Esumana 32</b> .....	118
Eyaapeelo muttethe wa vathi wa Omosampiiki .....	118
<b>IKARUMA SOOWETTELA NI SOOLOTTIHANA - Esumana 33 ..</b>	120
Ikaruma sa mpakhiro.....	120
Namweettiha a mukukutta.....	122
<b>IKARUMA SOOWETTELA NI SOOLOTTIHANA - Esumana 34 ..</b>	124
Ifeeriya sa Niina .....	124
Mananna a olavulihana .....	126
<b>IKARUMA SOOWETTELA NI SOOLOTTIHANA - Esumana 35 ..</b>	128
Wiikasooa mparapaarani .....	128
Niina ni Hamati.....	130
No Centro de Saúde.....	130
<b>ELAPU AHU - Esumana 36</b> .....	132
Iporovinsiya sa Osulu wa Omasampiiki .....	132
Atthu a eporovinsiya ahu .....	134
Mireerelo sa eporovinsiya ya Wamphula .....	136
<b>ELAPU AHU - Esumana 36</b> .....	138
Mireerelo sa eporovinsiya ya Okaapu Telekaatu ni Oniyasa...	138
<b>MAWEHAWEHERYO - Esumana 37</b> .....	140
Khiniya mwaamuthiyana a Omuhipiti .....	140







**AMUSI**



**EXIKOLA**



**NTTETTHE**



**NLAKA**



**ERUTTHU YA ATTHU**



**OKUMI NI ORATTA**



**IKARUMA SOOWEETTELA NI SOOLOTTIHANA**



**ELAPO AHU**







## Miyo ni amusi aka

Miyo kiiiihaniwa Ana. Kirina iyaakha 9.  
 Miyo ni munna aka Nono niri nto ekalaase ya neexexe.  
 Elapo aka Omuhipiti, oporovinsiya ya Wamphula.  
 Kinikhala ni amusi aka Olumpu muttethe wa Omurumoni.  
 Apaapa ti Aputu Napawa ni amaama ti Amina Paphaari.  
 Apaapa anakhavoko ni amaama apurusoori.  
 Nakhavoko mutthu oniiva ihopa mpahari ni ekalowa.  
 Empa ah u yankhaani masi vaavo nootteeleliwa murima.  
 Nono ni miyo nookhalana nenna va murokora ah u onaasimiwa Latifa.  
 Miyo ni amusi aka ninniiwanana ni ninniphentana vanceene.



### Mutaphulelo

**Kiniihaniwa** – kiiiitthaniwa  
**Anakhavoko** – anammisera



### Osome makoho ni waakhule mukateerununi

1. Ti ovi muru wa mutthaka ola?
2. Ti ani onilavula mmutthakani mu?
3. Waahimye amusi awe Ana anilavuliwa mmutthakani?
4. Ohimye masina a amusi awo.

Vano osome  
ni miyo



**Osome ni miyo mutthaka " Miyo ni amusi aka "**

Vano  
owiriyane



**Owiriyane muupuwelelo olempe mwaapara awo**

**Owiriyane ni ohimye khula nlepo na nlove:**

Kiniitthaniwa

Anakhavoko



**Vokapulaariyu**

**Omalelihe mmalakani ni mattiya nsina anittharelana: miyo, weyo, owo, awo, hiyo**

\_\_\_\_\_ ni munna aka Nono ninoosoma.  
\_\_\_\_\_ muhima awe Nono.

Vano olepe



**Olepe mukateerununi mwawo, ele enirowa osoma apurusoori**

Miyo kiniihaniwa Ana.

Apaapa ti Aputu Napawa.

**Otakiherye olepaka mukateerununi mwawo**

Apaapa nakhavoko ni amaama purusoori.

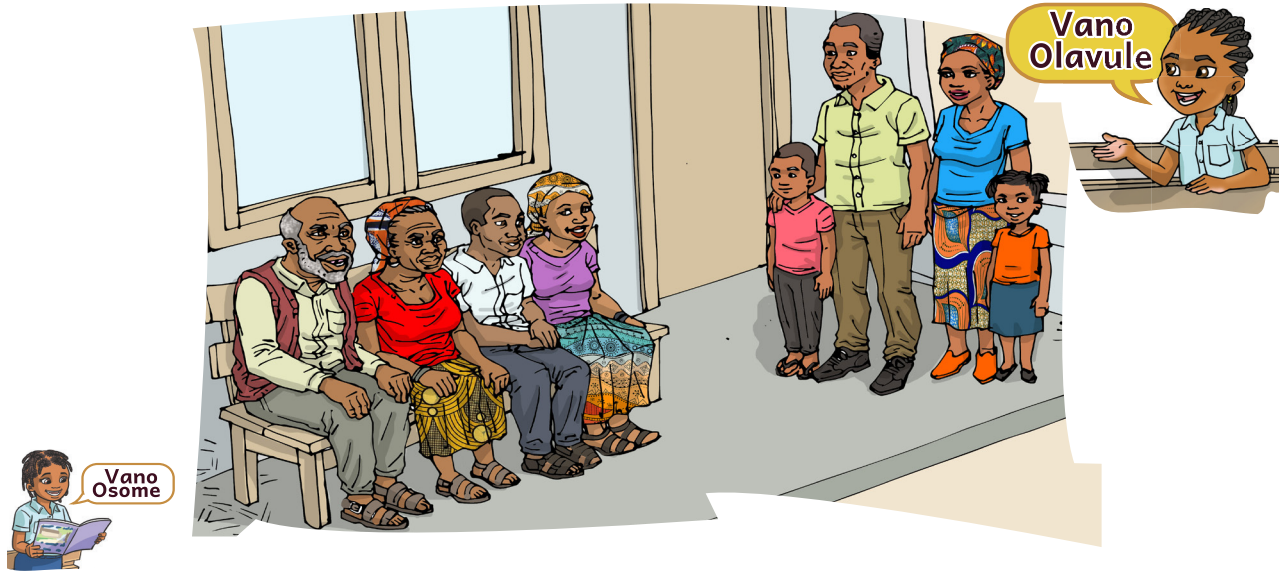
Nakhavoko mutthu oniiva ihopa.

**Olepe woowuupuwelela okhomasanaka ni mwaapara awo**

Vano  
ocampule



**Waacampule atthu akhomasanaka**



## Amusi a Nimanle

Nimanle mulopwana onikhala otixitiriitu ya Omunapo.

Owo ookhalana amusi oowaatta ni oowiiwanana.

Wiiwanana wiira okhaliheryana.

Owo ni amusi awe ari muttethe wa Omikoleni.

Vano nrowe nisuwele nloko na Nimanle:

Owo nsina nawe nootheene ti Nimanle Milita.

Apaapa awe aniihaniwa Milita Mwaativisa Hasaani.

Amaama awe tho ti Karoliina ni axirokora awe ti Peeliinya ni Matalaena.

Apwaapu awe ti Apisiyaale Antooniyu ni apiipi awe ti Amariya Saalimu.

Axitaata awe ti Yanvitta, Alupeerutu ni Aseveetu.

Akhuulu awe ti Akirixitiina ni axinaakhe awe tho ti Apatiriisiya ni Afaatima.

Nla ti nloko na Nimanle.

Nrowe nuupuwele makhalelo a nloko nahu.



### Mutaphulelo

**Oowaatta** – anceene

**Anaasimiwa** – anitthaniwa

**Akhuulu** – amaayi atokweene



Vano waakhule

### Osome makoho ni waakhule mukateerununi

1. Ti ani okhanle mutthu-piitthu oowooneyexa a mutthaka ola?
2. Ohimye nsina na apwaapu awe Nimanle.
3. Muteko xeeni anivaraaya ahumu a nloko nawo moomusini?
4. Exeeni enireerelaaya osuwela masina a amusi awo?

Vano osome  
ni miyo



**Osome ni miyo mutthaka "Amusi a Nimanle"**

Vano  
owiriyane



**Owiriyane muupuwelelo anisoma apurusoori**

**Owiriyane ni ohimye khula nlepo na nlove:**

Anceene

Atokweene



**Vokapulaariyu**

**Omalelihe mmalakani ni mattiya nsina anittharelana: awe, aka, saya, nawe, nahu**

Weyo wuupuwele makhalelo a nloko \_\_\_\_\_.  
Axirokora \_\_\_\_\_ ti Peeliinya ni Mataleena.

Vano olepe



**Olepe mukateerununi mwawo, ele enirowa osoma apurusoori**

Amusi a Nimanle.

Nla ti nloko na Nimanle.

**Otakherye olepaka mukateerununi mwawo**

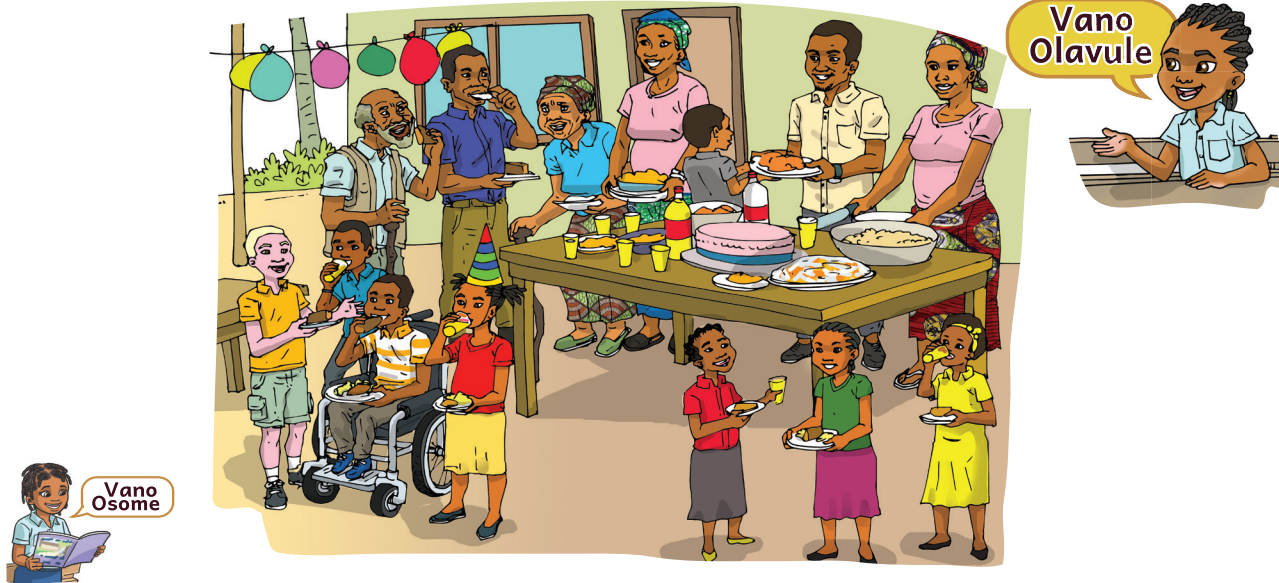
Owo ni amusi awe ari muttethe wa Omikoleni.  
Miyo kinuupuwela makhalelo a nloko naka.

**Olepe woowuupuwelela okhomasanaka ni mwaapara awo**

Vano  
ocampule



**Omucampule mmusi awo mmosa**



## Sookhumelela vanihikuni

Mahiku yeettaka 8, mweeri wa Maarusu eyaakha ya 2021

Olelo kinivenya ootteeliwa murima vanceene!  
 Olelo nihiku naka, kimpaka iyaakha 9.  
 Miyo kinuupuwela etthuvo ya nihiku naka, ecinka esya.  
 Etthuvo etthu yoovahiwa mutthu aapakaka iyaakha.  
 Vahooxa, atthu ootheene ari oomaala, masi khaliyanle?  
 Valokenleene, atthu aapacerya orwa ni okitthapela.  
 Awo anitthapa yiipaka ilulu ni yiinaka isipo sooreerexa.  
 Vameesa siri soolya sinceene ni apurisoori ari vaava.  
 Amaama anikumihha ecinka esya ni anikivaha yiipaka.  
 Ecinka ela yookisivela vanceene.  
 Epoolu ni suumu siri vameesa.  
 Oreera opaka iyaakha ni wuupuweliwa ni amusi.



### Mutaphulelo

**Valokenleene** – vapienseene

**Ecinka** – epaasikeri



Vano waakhule

### Osome makoho ni waakhule mukateerununi

1. Exeeni namwaalaka ovennyaawe ootteeliwa murima?
2. Etthuvo xeeni evahin'we ole aapaka iyaakha?
3. Nihiku xeeni nyuuwo mumpakaanyu mwaakha?
4. Vaniireerela exeeni otthapela nihiku mutthu onipakaawe iyaakha?



Vano osome  
ni miyo



**Osome ni miyo mutthaka "Sookhumelela vanihikuni"**

Vano  
owiriyane



**Owiriyane muupuwelelo olempe mwaapara awo**

**Owiriyane ni ohimye khula nlepo na nlove:**

Valokenleene

Ecinka



**Vokapulaariyu**

**Olepe wooreerela moolumo anttharelana**

Sinceene siri Vameesa soolya.

Ilulu yiipaka anitthapa Awo.



Vano olepe

**Olepe mukateerununi mwawo, ele enirowa osoma apurusoori**

Olelo kimpaka iyaakha 9.

Epoolu ni suumu siri vameesa.

**Otakherye olepaka mukateerununi mwawo**

Olelo kinivenya ootteeliwa murima.

Ecinka ela yookisivela vanceene.

**Olepe woowuupuwelela waalattulaka axaapara otthuva**

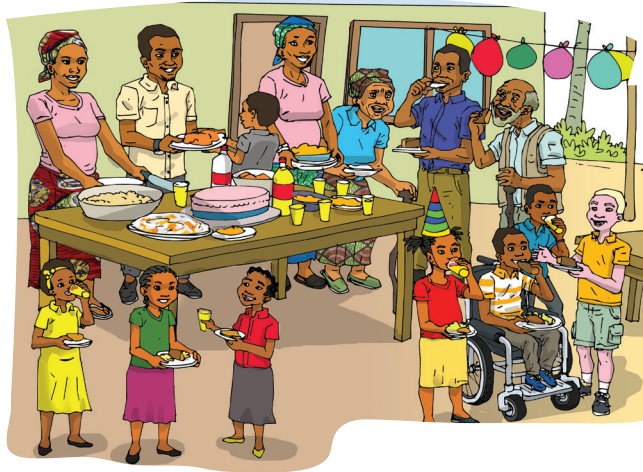


Vano  
ocampule

**Ocampule etthuvo yoosivenle waakhela**



Vano Osome



Vano Olavule



## Nihiku na niira

Nihiku na niira nihiku atthu anituphaaya mikano sinceene.  
 Awo aniphavela olya, wiina ni wiipa ahimaalaka.  
 Mutthaka ola onnisuweliha miyeettelo nihiku na niira:  
 Amusi ni atthu ootheene oolaleyiwa akhalaneke nipuro naya nookilaathi.  
 Awo arweeke ni ikuwo sookatthiwa saaneene.  
 Khula mutthu onikilaathi nipuro nawe nooreera.  
 Vahaleelaka opacerya olya atthu anyaweke.  
 Awo aheleleke eyoolya eyo mphaceni vakhaani vakhaani wiira ahooccele.  
 Etthu yoonanara woocela eyoolya vaniirani wala owaani.  
 Hiyo nisuwele osuka eyoolya wiira emalelaniwe mahiku ootheene.  
 Mihokorokho savirikana, ahavuleke mmosa onaasivela.  
 Nto aakhala atthu oowaasivela wiina ni wiipa.  
 Awo yiineke ni yiipeke ni nttittimiho wiira nihoonaneye ntthupi.  
 Etthu yooreera otthara makhalelo a khula niira.



### Mutaphulelo

**Oolaleyiwa** – oolattuliwa  
**Nookilaathi** – noowonkoma  
**Sookatthiwa** – soofuliwa



Vano waakhule

### Osome makoho ni waakhule mukateerununi

1. Exeeni enilavuliwa mmutthakani?
2. Exeeni enireheriwa ni axineene niira wala esataka ehinatthi opacerya?
3. Exeeni vanireerelaaya wiirela mpantta vaniirani?
4. Niira xeeni mwiiralyaanyu mpantta noosivenleni?

Vano osome  
ni miyo



**Osome ni miyo mutthaka "Nihiku na niira"**

Vano  
owiriyane



**Owiriyane muupuwelelo anisoma apurusoori**

**Owiriyane ni ohimye khula nlepo na nlove:**

Oolaleyiwa

Soofuliwa



**Vokapulaariyu**

**Olepe mukateerununi mwawo, ele enirowa osoma apurusoori**

Awo aniphavela olya.

Weyo onisuwela osuka eyoolya.

Vano olepe



**Olepe wooreerela moolumo anttharelana**

Ikuwo owo ni sookatthiwa orweeke

Mutthu Khula onikilaathi nipuro nooreera nawe.

**Otakiherye olepaka mukateerununi mwawo**

Munna aka oophentiwa

Kinilepa ewarakha ela wiira kisuwele ehapari anyu.

**Olepe woowuupuwelela waalattulaka axaapara awo oniirani**

Vano  
ocampule



**Waacampule atthu yiinaka akina alyaaka vaniirani**



Onatukulu, mahiku 18 a Maarusu a eyaakha ya 2021

Munna aka oophentiwa

Kinilepa ewarakha ela wiira kisuwele ehapari anyu.  
 Nyuwo ni anaxikola akhwa anyu mwaakumi?  
 Miyo, amaama, apaapa ni axihima ahuh naakumi.  
 Mwaakha ola kinisoma ekalaase ya neexexe.  
 Kootteliwa murima okhala wiira kinnisuwela olepa mutthaka.  
 Wiilipiheke osoma ni ninoowehereryani ni ekuurusu yoopakiwa.  
 Nihiku munrwaanyu munileeleke wiira niwaakheleleni.  
 Miyo kinilipelela okaakhula ewarakha ela.  
 Makhomaso a murettele munna.

Murokora anyu, Rukhiya.



### Mutaphulelo

**Ehapari** - ehaali  
**Ninoowehereryani** - ninoolipelelani  
**Munna** - naarokore



Vano waakhule

### Osome makoho ni waakhule mukateerununi

1. Ti ani olempe ewarakha ela?
2. Mwaha xeeni omulempiihe Rukhiya ewarakha ela?
3. Exeeni emutteeninhe murima Rukhiya?
4. Enireerela exeeni omulepela mwapara awe ewarakha?

Vano osome ni miyo



**Osome ni miyo mutthaka "Ewarakha"**

Vano owiriyane



**Owiriyane muupuwelelo olempe mwaapara awo**

**Owiriyane ni ohimye khula nlepo na nlove:**

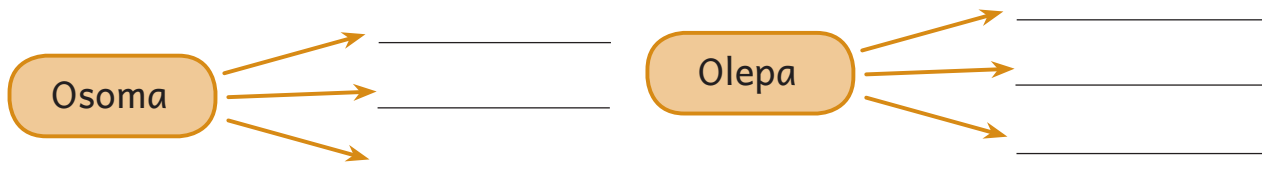
kinisoma

Murettele



**Vokapulaariyu**

**Omalelihe mmalakani ni omusi a malove annittharelana:**



**Olepe mukateerununi mwawo, ele enirowa osoma apurusoori**

Mwaakha ola kinisoma ekalaase ya neexexe.

Miyo kinilipelela okaakhula ewarakha ela.

**Otakherye olepaka mukateerununi mwawo**

Nyuwo ni anaxikola akhwiinyu mwaakumi?

Makhomaso a murettele munna.

**Olepe woowuupuwelela ewarakha ohimyaka mananna onisomaawo**



**Ocampule mukateerununi enveloopi yoohela ewarakha**



Vano  
Osome

### Musuweliho

Mpatthani aka Rukhya  
Olelo nkinirowa oxikola.  
Miyo kinoowereyiwa muru.  
Kinamuuvekela wiira waaleele apurusoori ahu eretta enikiwereya!  
Kinamuuvekela tho wiira waaleele axipatthani ahu ootheene a oxikola makhomaso.  
22/03/2021  
Ana

### Musuweliho

Naakhi Rapiya  
Olelo kookhalana muteko wa oxikola.  
Muteko owo wookhalana mammeru ookacamiha.  
Kiniphavela wiira mukileelihe mammeru awo oovila!  
Kinamuuvekelani tho wiira muhikhume vate va.  
Miyo kinirowa woola eliivuru ya Matemaatika.  
22/03/2021  
Namayi anyu Luuna

### Musuweliho

Namayi aka Luuna  
Miyo kinnitteeliwa murima ni mihupi anyu.  
Kinimooleelihani mammeru ootheeni oowoovilani.  
Niinano va kookhalana muthukumano wa ohano.  
Muteko anyu okhaleke wa ewoora 15: ni minuutu 30.  
22/03/2021  
Naakhi anyu Rapiya



### Mutaphulelo

**Waaleele** - waahimeerye/waasuwelihe  
**Axipatthani** - axaapara/axirikha  
**Naakhi** - naakhe/ muhima aya amaama  
**Ovila** - mukacamiho/otikiniha



Vano waakhule

### Osome makoho ni waakhule mukateerununi

1. Ti ani anamalepa a mihupi iya miraru?
2. Exeeni Ana onaaleelaawe apurusoori awe?
3. Muteko xeeni Luuna onivekelaawe okhalihwiwa?
4. Oniiraka sayi weyo waakhalana muteko woowoovila?

Vano osome  
ni miyo



**Osome ni miyo mutthaka "Musuweliho"**

Vano  
owiriyane



**Owiriyane muupuwelelo anisoma apurusoori**

**Owiriyane ni ohimye khula nlepo na nlove:**

Axipatthani

Mammeru



**Vokapulaariyu**

**Omalelihe mmalakani ni mattiya nsina anittharelana: (. ni ?)**

Olelo munoorowa oxikola \_\_\_\_

Miyo kookhalana eliivuru ya Matemaatika \_\_\_\_

Vano olepe



**Olepe mukateerununi mwawo, ele enirowa osoma apurusoori**

Miyo kinoowereyiwa muru.

Miyo kinirowa woola eliivuru ya Matemaatika.

**Otakherye olepaka mukateerununi mwawo**

Olelo kookhalana muteko wa oxikola.

Miyo kinnitteeliwa murima ni muhupi anyu.

**Olepe woowupuwelela omusuwelihaka mwaapara awo muteko wa owaani**

Vano  
ocampule



**Omucampule mukateerununi naxikola onilepa ewarakha**





Wamphula, mahiku yeetaka 6 a mweeri wa Apirili a eyaakha ya 2021

Paapa aka oophentiwa!

Woopaceryani kiniphavela osuwela ehaali anyu. Miyo kimukumi.

Kiniphavela wiira ewarakha ela yaaphwanye amusi ni okumi.

Miyo nno kimukumi ni axaapara aka ootheene.

Osoma waka tho onneetta saana ni kinivira kirowaka ekalaase yaneethanu.

Koosuwela wiira ola mweeri anyu, mweeri yoole muniiraanyu iyaakha.

Miyo kinimoottotopelani ni muvirihe salaama nihiku na 15.

Paapa, miyo kinivekela wiira kirowe owaani weyiwo ni axaapara aka.

Nimphavela woopakeleni niira na nihiku nanyu.

Hiyo noothuma esumu, noopaka ipoolu ni nimphavela okhuura ni nyuwo.

Wakhala wiira munookupali, kinivekela wiira mukilepele ewarakha.

Axaapara aka yaawo ahaana yaavekelaka mweemereryo axipaapa aya tho.

Wookiseryani, kiniira mukhalane ekumi yinceene ni amusi ootheene.

Kinaaveleliha ipeeco sa mphento amaama ni naarokore aka.

Mwaana anyu Luuka Ayipu



### Mutaphulelo

**Axaapara** - axinthamwene

**Niira** - esatakha



Vano waakhule

**Osome makoho ni waakhule mukateerununi**

1. Ohimye muttethe olepiwaaya ewarakha ela.
2. Ti ani olempe ewarakha ela?
3. Enipakiwaka exeeni nihiku na mmusi awe ?
4. Owaani, waakohe amusi awo nihiku xeeni anipakaaya iyaakha saya.



Vano osome  
ni miyo



**Osome ni miyo mutthaka "Ewarakha"**

Vano  
owiriyane



**Owiriyane ewarakha apurusoori anirowaaya osoma (Ewarakha ya muliivuruni mwa naxikola)**

**Owiriyane ni ohimye khula nlepo na nlove:**

Axinthamwene

Esatakha



**Vokapulaariyu**

**Ohele ikanyero sa mattonyo sinittharelana wiira moolumo asomeye saana (: ! , ? .)**

Haliya onirowa woowi\_\_\_\_\_

Phoole ohaaveyiheke atthu aalupale\_\_\_\_\_



Vano olepe

**Olepe mukateerununi mwawo, ele enirowa osoma apurusoori**

Paapa oophentiwa

Woopaceryani kiniphavela osuwela ehaali anyu.

**Otakiherye olepaka mukateerununi mwawo**

kinoona wiira mwaakha ola kinoovira kirowaka ekalaase yaneethanu.

Miyo koothuma esuumu, koopaka epoolu ni kiniphavela woovahani etthuvo.

**Olepe woowupuwelela ewarakha ya oviriha ifeeriya sawe.**

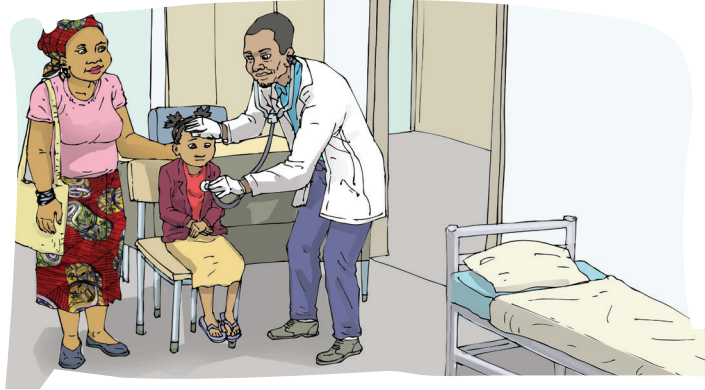


Vano  
ocampule

**Omucampule mmusi awo mmosa osomaka ewarakha**



Vano Osome



Vano Olavule

## Sofiya onimuhoola muhima awe Amina oxipiritaali

Sofiya ori ni muhima awe Amina ookhalana.  
 Makuttula eretta ya nrapala na erutthu ahu.  
 Owo onikhala ni amama awe oohitheliwa Onamiromiili.  
 Ayiya awe Sofiya anikhala elapo ekina yoottayivela ni iwe.  
 Awo animurweela Sofiya wiira akhaleke hoothe.  
 Amaama awe aninvekela Sofiya wiira omukuxe muhima awe.  
 Owo onimukuxa muhima awe orina makuttula wiira akhalaneke.  
 Noophiya Sofiya onikohererya mananna a omupenuxa Amina.  
 Owo onimuhoola Amina oxipiritaali wiira olooliwe.

Siiso, nfirmereero onimuhimeerya wiira:

- Muhiira saana omuhoola oxipiritaali nno, miyo kinoomuvaha murette.
- Ohilovele owurya mirrette iya khula nihiku owaani.
- Khula mweeri ohaana orwa oxipiritaali nihiku nimosi.
- Mwaphiya owaani ola okhalane iparatho sawe sene.
- Muhaana omukatthela ikuwo sawe wiira sihinanarexe.
- Muhima anyu ola onopenuwa mwattharihelaru miruku.
- Atthu anceene aapenuwa, makuttula eretta enivoniwa.

Sofiya onixukhurela ni onnirowa ottharihela miruku iye.



### Mutaphulelo

**Namakuttula** - namakokho/namattana

**Nrapala** - nttapala/nikhuli na erutthu

**Openuxiwa** - ovonihwa

**Ohilovela** - ohicompela



Vano waakhule

### Osome makoho ni waakhule mukateerununi

1. Ti ani anilavuliwa mmutthakani omanlyaawo osoma?
2. Maama aamuvekenle exeeni mwaana awe Sofiya?
3. Vanireerela exeeni oottharihela miruku sa nfirmereero?
4. Miruku xeeni onaavahaawe axaapara awo yaawereyiwaka?

Vano osome  
ni miyo



**Osome ni miyo mutthaka "Sofiya ni muhima awe Amina"**

Vano  
owiriyane



**Waawiriyane apurusoori ni otthikele ohimya malove arina mpantta a nlove: -khwa-**

Makutthula Etakhwa Okhuma Okhwaranya

**Owiriyane ni ohimye khula nlepo na nlove:**

Namakuttula.

Openuxiwa.

Mwattharihelaru.



**Vokapulaariyu**

**Omalelihe mmalakani ni anamalikanxa anittharelana:**

**ooreera, oonanara, ooloka, ootakhala**

Sofiya oomupenuxa muhima awe, owo ti \_\_\_\_\_ murima.

Sofiya oomuthuma kharaka \_\_\_\_\_ ni omwaapeya.

Amina khomuxukhurenle Sofiya, owo ti \_\_\_\_\_ murima.

Vano olepe



**Olepe mukateerununi mwawo, ele enirowa osoma apurusoori**

Sofiya ni muhima awe Amina.

Makuttula eretta ya nrapala na erutthu ahu.

Mwaphiya owaani ola okhalane iparatho sawe.

**Otakherye olepaka mukateerununi mwawo**

Owo onikhala ni amama awe muttethe a Omikoleni.

Owo onimukuxa muhima awe orina makuttula.

Ayiya awe Sofiya anikhala elapo ekina.

**Olepe woowupuwelela wa eretta eniranvwa mwaha woohirapa**

Vano  
ocampule



**Omucampule mutthu orapihaka iparatho.**



## Orattela mpaani mwahu

Mutthaka ola onnisuweliha mananna a orattela mpaani.  
Wiira nikhilane okumi, empa ehaana okhala yooreerasa.  
Niratteleke sayi enupa ahuh?

Mahiku ootheene nihaana opaka:

- Vaxa vale amusi akhumeleke ota wiira niveleke mpaani.
  - Nto nipacereke onirupiwa, onilyiwa ni onaapeyiwa.
  - Nirapiheke iparatho, ikoopho, ikhulyeri, ikaarufu ni maasi ni esapawu.
  - Okattha ikuwo ni mikhumi niniikhunelaahu.
  - Niheleke murette oxoworo wuulupale ni oxoworo wuukhaani.
  - Neemerereke oheliwa murette mpaani.
  - Mpaani mukhaleke mooreera, mooriirya ni moohikhala ntthupi.
- Ala meettelo mattharihelo a empa yooreera ni ya ekumi.



### Mutaphulelo

**Onirupiwa** - onikhoniwa



### Osome makoho ni waakhule mukateerununi

1. Mutthaka ola onnisuweliha exeeni?
2. Weyo onirattela sayi empa onikhala awo?
3. Axiitthu xeeni anitthyawa waheliwa murette mpaani?
4. Mwaha wa exeeni ninleeliwaahu ohela murette mpaani?

Vano osome  
ni miyo



**Osome ni miyo mutthaka "Orattela mpaani"**

Vano  
owiriyane



**Waawiriyane apurusoori ni otthikele ohimya malove arina mpantta a nlove: -ttha-**

Mutthaka Ikulyeri Otthara Otthapa

**Owiriyane ni ohimye khula nlepo na nlove:**

Onikoniwa. Esapawu. Niniikhunelaahu.



**Vokapulaariyu**

**Omalelihe mmalakani ni masina anittharelana: makhura, maaxikara, eroroco, esapawu, maasi**

Nirapiheke ikoopfo ni \_\_\_\_\_ ni esapawu.

Naakhumaka oxoworo ninyaweke ni maasi ni \_\_\_\_\_.

Onnireerela orapa ni \_\_\_\_\_ ni \_\_\_\_\_.

Vano olepe



**Olepe mukateerununi mwawo, ele enirowa osoma apurusoori**

Niratteleke sayi empa ahu?

Nto nipacereke onirupiwa nnarowa onilyiwa.

Ala mattharihelo a empa yooreera.

**Otakiherye olepaka mukateerununi mwawo**

Vaxa vale amusi akhumeleke ota.

Okattha ikuwo ni mikhumi niniikhunelaahu.

Neemerereke oheliwa murette mpaani.

**Olepe woowuupuwelela wa orattela impa sahu**

Vano  
ocampule



**Omucampule mutthu ovelaka vate.**